

# BOSS MODELS

JOHANNESBURG

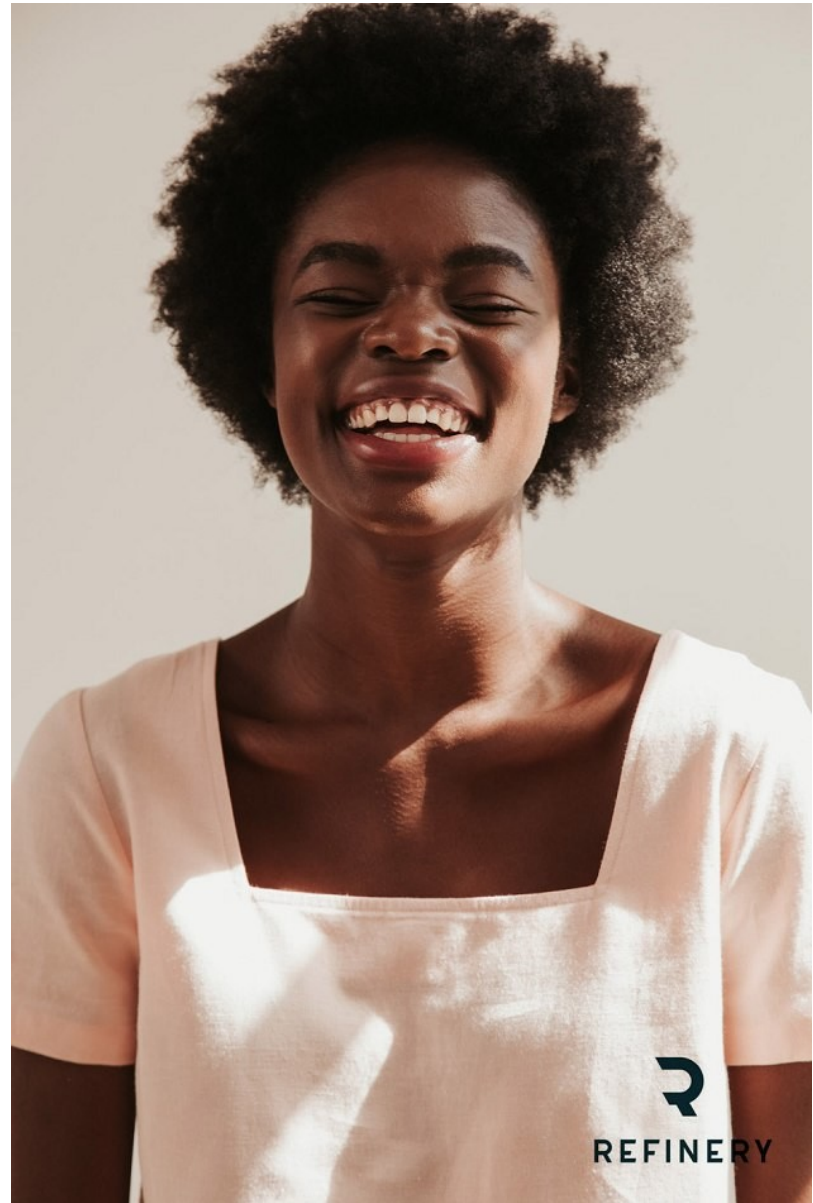


YEMI OKESOKUN

Height: 178cm Bust: 87cm Waist: 66cm Hips: 100cm Shoe: 8 UK Hair: Black Eyes: Brown

# BOSS MODELS

JOHANNESBURG



YEMI OKESOKUN

Height: 178cm Bust: 87cm Waist: 66cm Hips: 100cm Shoe: 8 UK Hair: Black Eyes: Brown

# BOSS MODELS

JOHANNESBURG



YEMI OKESOKUN

Height: 178cm Bust: 87cm Waist: 66cm Hips: 100cm Shoe: 8 UK Hair: Black Eyes: Brown



# BOSS MODELS

JOHANNESBURG



YEMI OKESOKUN

Height: 178cm Bust: 87cm Waist: 66cm Hips: 100cm Shoe: 8 UK Hair: Black Eyes: Brown

# BOSS MODELS

JOHANNESBURG



YEMI OKESOKUN

Height: 178cm Bust: 87cm Waist: 66cm Hips: 100cm Shoe: 8 UK Hair: Black Eyes: Brown



# BOSS MODELS

JOHANNESBURG



YEMI OKESOKUN

Height: 178cm Bust: 87cm Waist: 66cm Hips: 100cm Shoe: 8 UK Hair: Black Eyes: Brown



# BOSS MODELS

JOHANNESBURG



YEMI OKESOKUN

Height: 178cm Bust: 87cm Waist: 66cm Hips: 100cm Shoe: 8 UK Hair: Black Eyes: Brown



# BOSS MODELS

JOHANNESBURG



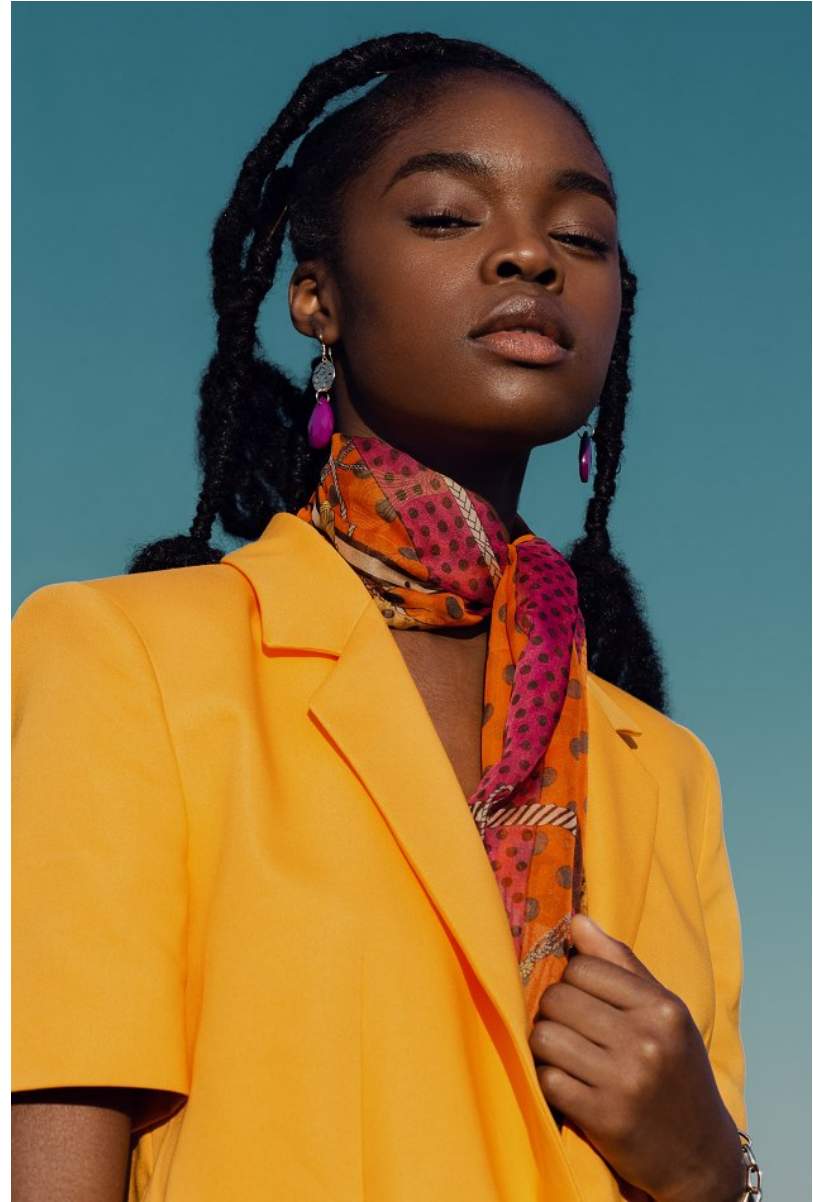
YEMI OKESOKUN

Height: 178cm Bust: 87cm Waist: 66cm Hips: 100cm Shoe: 8 UK Hair: Black Eyes: Brown



# BOSS MODELS

JOHANNESBURG



YEMI OKESOKUN

Height: 178cm Bust: 87cm Waist: 66cm Hips: 100cm Shoe: 8 UK Hair: Black Eyes: Brown

# BOSS MODELS

JOHANNESBURG



YEMI OKESOKUN

Height: 178cm Bust: 87cm Waist: 66cm Hips: 100cm Shoe: 8 UK Hair: Black Eyes: Brown



# BOSS MODELS

JOHANNESBURG

Hair

*Produced by Busi Manunga. Photographer: Simz Mkhwanazi. Hair: Bomzi Lekgoro*

## IMPERIAL *braids*

The modern braid gives a striking, yet regal aura to the wearer. This season's most spectacular braided styles are ideal for women wanting to decorate and raise their crowns



YEMI OKESOKUN

Height: 178cm Bust: 87cm Waist: 66cm Hips: 100cm Shoe: 8 UK Hair: Black Eyes: Brown

# BOSS MODELS

JOHANNESBURG



YEMI OKESOKUN

Height: 178cm Bust: 87cm Waist: 66cm Hips: 100cm Shoe: 8 UK Hair: Black Eyes: Brown



# BOSS MODELS

JOHANNESBURG

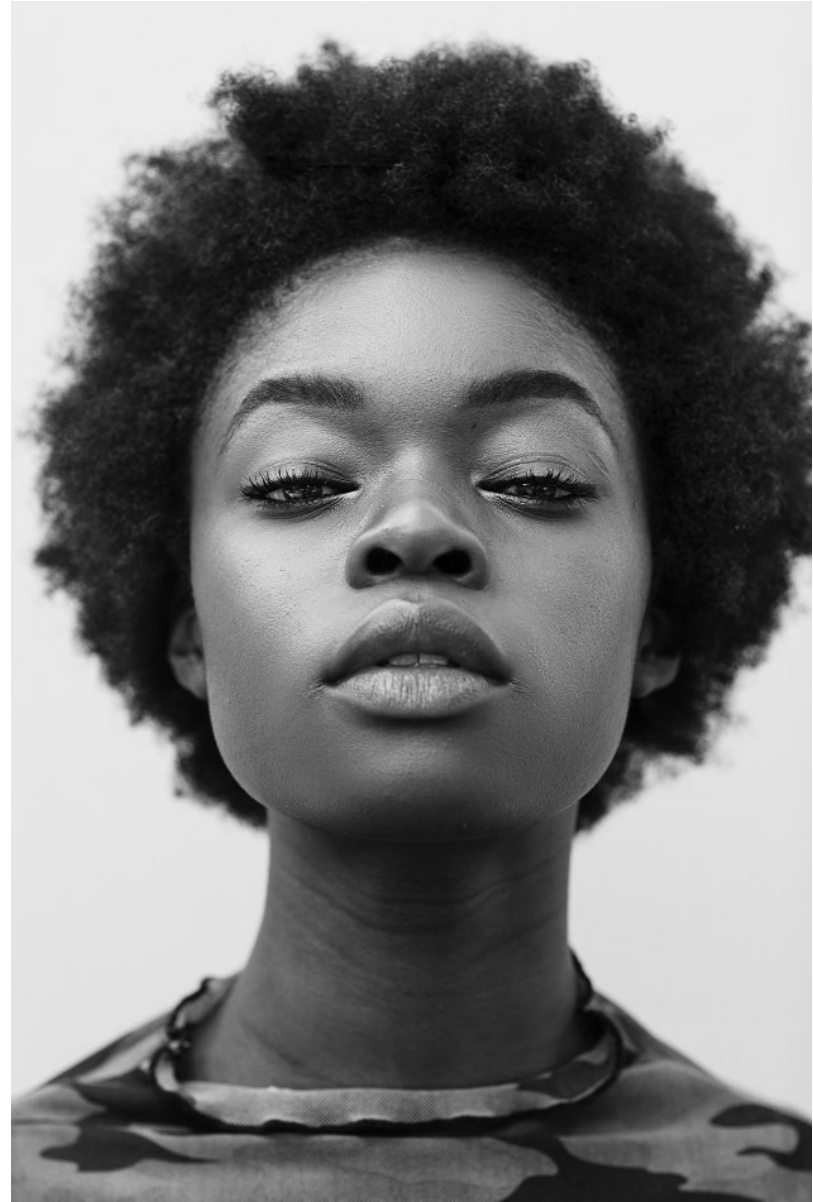


YEMI OKESOKUN

Height: 178cm Bust: 87cm Waist: 66cm Hips: 100cm Shoe: 8 UK Hair: Black Eyes: Brown

# BOSS MODELS

JOHANNESBURG



YEMI OKESOKUN

Height: 178cm Bust: 87cm Waist: 66cm Hips: 100cm Shoe: 8 UK Hair: Black Eyes: Brown



# BOSS MODELS

JOHANNESBURG

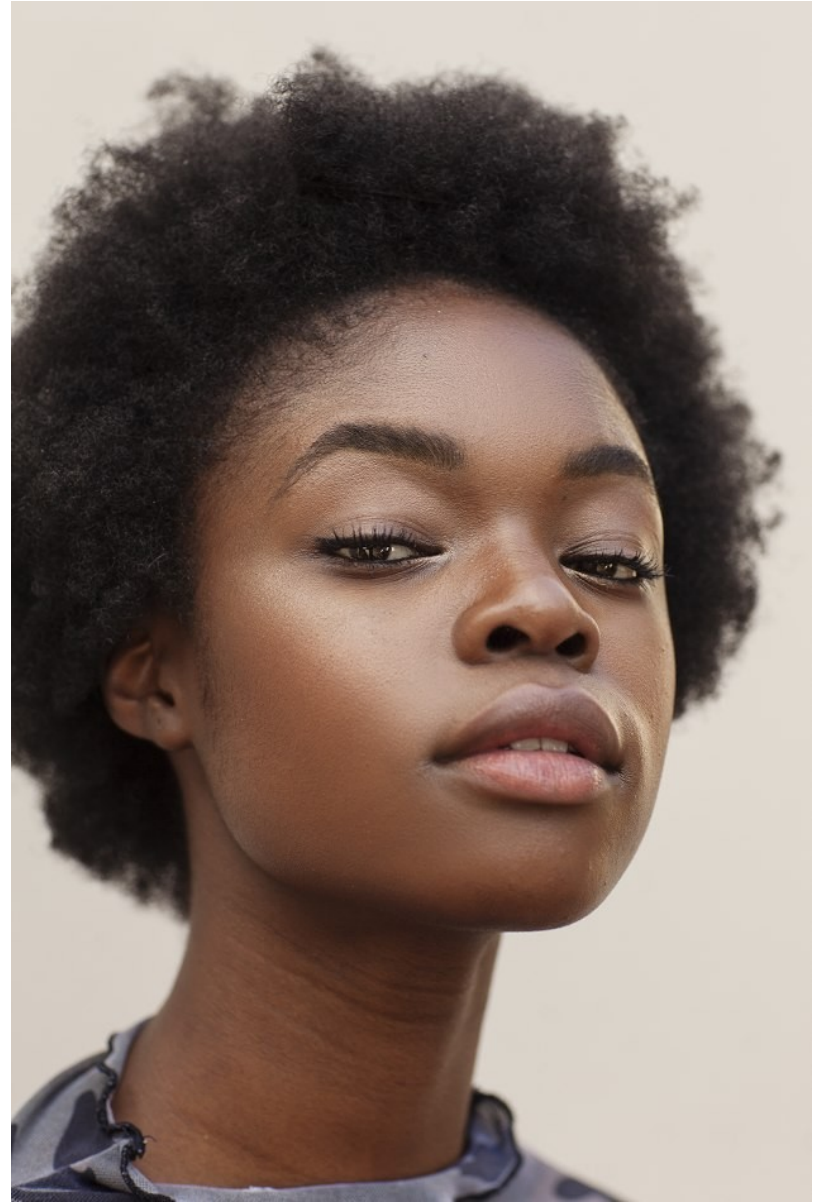


YEMI OKESOKUN

Height: 178cm Bust: 87cm Waist: 66cm Hips: 100cm Shoe: 8 UK Hair: Black Eyes: Brown

# BOSS MODELS

JOHANNESBURG



YEMI OKESOKUN

Height: 178cm Bust: 87cm Waist: 66cm Hips: 100cm Shoe: 8 UK Hair: Black Eyes: Brown