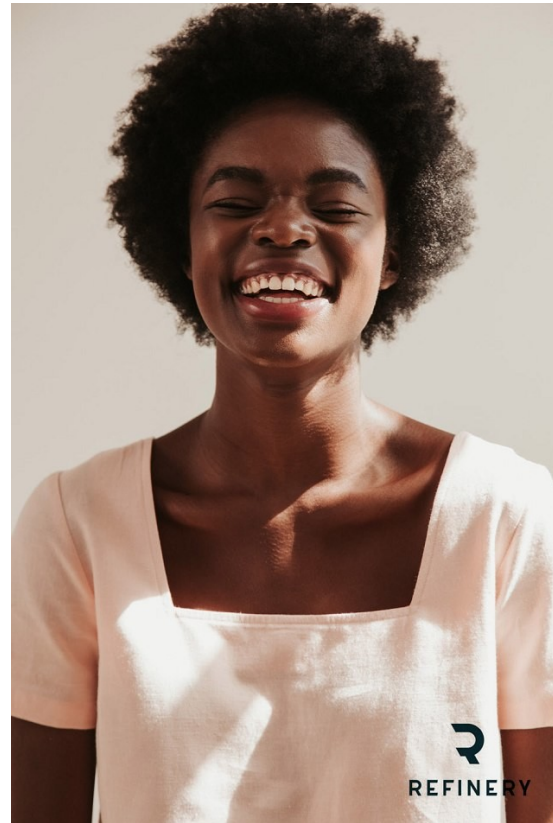


BOSS MODELS

JOHANNESBURG



YEMI OKESOKUN

Height: 178cm Bust: 87cm Waist: 66cm Hips: 100cm Shoe: 8 UK Hair: Black Eyes: Brown

BOSS MODELS

JOHANNESBURG



YEMI OKESOKUN

Height: 178cm Bust: 87cm Waist: 66cm Hips: 100cm Shoe: 8 UK Hair: Black Eyes: Brown

BOSS MODELS

JOHANNESBURG



YEMI OKESOKUN

Height: 178cm Bust: 87cm Waist: 66cm Hips: 100cm Shoe: 8 UK Hair: Black Eyes: Brown

BOSS MODELS

JOHANNESBURG

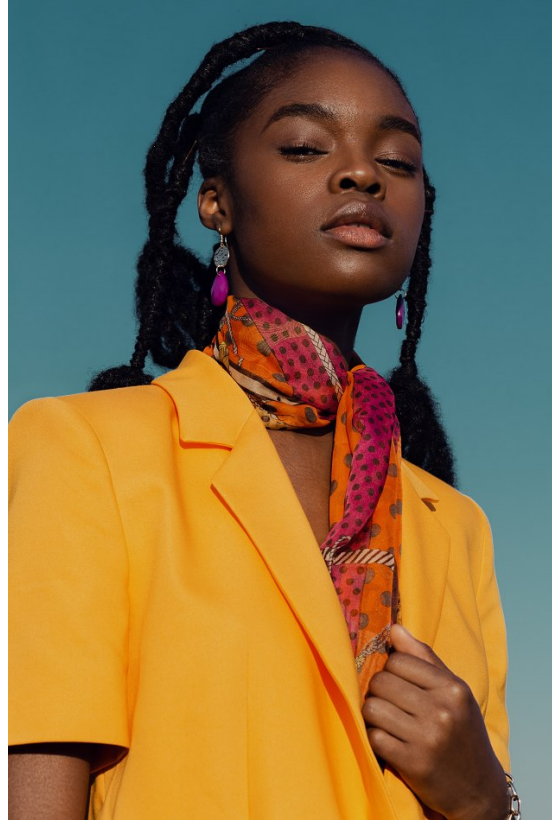


YEMI OKESOKUN

Height: 178cm Bust: 87cm Waist: 66cm Hips: 100cm Shoe: 8 UK Hair: Black Eyes: Brown

BOSS MODELS

JOHANNESBURG



YEMI OKESOKUN

Height: 178cm Bust: 87cm Waist: 66cm Hips: 100cm Shoe: 8 UK Hair: Black Eyes: Brown

BOSS MODELS

JOHANNESBURG



Hair

Produced by Busi Manunga. Photographer: Simz Mkhwanazi. Hair: Bonzi Lekgomo

IMPERIAL *braids*

The modern braid gives a striking, yet regal aura to the wearer. This season's most spectacular braided styles are ideal for women wanting to decorate and raise their crowns

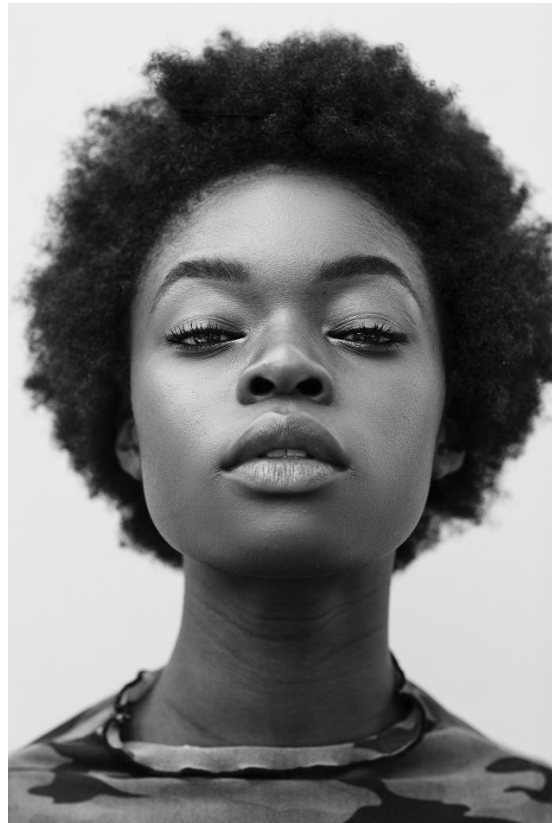


YEMI OKESOKUN

Height: 178cm Bust: 87cm Waist: 66cm Hips: 100cm Shoe: 8 UK Hair: Black Eyes: Brown

BOSS MODELS

JOHANNESBURG



YEMI OKESOKUN

Height: 178cm Bust: 87cm Waist: 66cm Hips: 100cm Shoe: 8 UK Hair: Black Eyes: Brown

BOSS MODELS

JOHANNESBURG



YEMI OKESOKUN

Height: 178cm Bust: 87cm Waist: 66cm Hips: 100cm Shoe: 8 UK Hair: Black Eyes: Brown