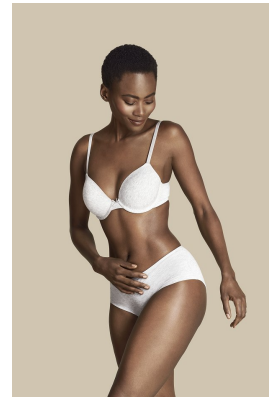


# BOSS MODELS

JOHANNESBURG

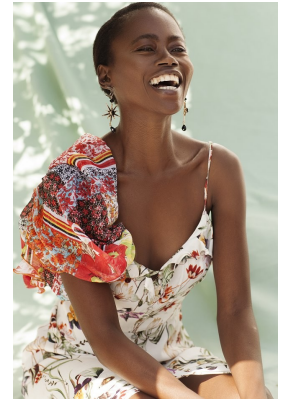


KAONE KARIO

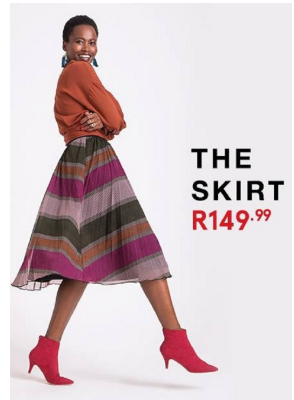
Height: 172cm Bust: 81cm Waist: 65cm Hips: 93cm Shoe: 7.5 UK Hair: Black Eyes: Brown

# BOSS MODELS

JOHANNESBURG



OVER  
—  
THE  
MOON  
ALL WOMAN, WHATEVER THE OCCASION



THE  
SKIRT  
R149.<sup>99</sup>



THE  
SHIRT  
DRESS  
R159.<sup>99</sup>

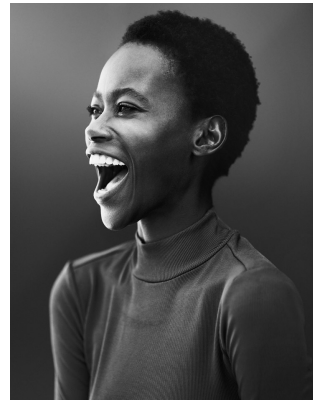
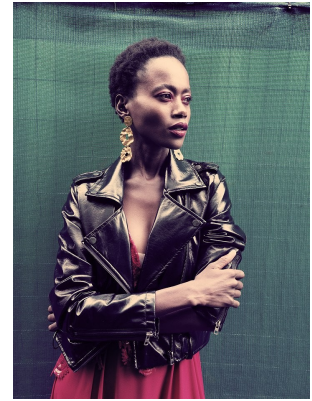
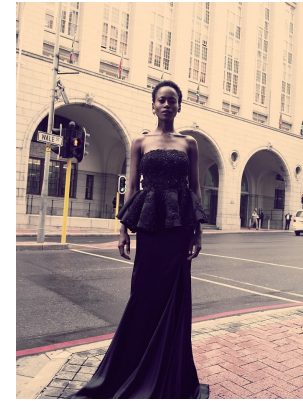


KAONE KARIO

Height: 172cm Bust: 81cm Waist: 65cm Hips: 93cm Shoe: 7.5 UK Hair: Black Eyes: Brown

# BOSS MODELS

JOHANNESBURG



## KAONE KARIO

Height: 172cm Bust: 81cm Waist: 65cm Hips: 93cm Shoe: 7.5 UK Hair: Black Eyes: Brown