

# BOSS MODELS

JOHANNESBURG



ADEOLA ARIYO

Height: 176cm Bust: 83cm Waist: 62cm Hips: 94cm Shoe: 7 UK Hair: Black Eyes: Green/Brown

# BOSS MODELS

JOHANNESBURG



ADEOLA ARIYO

Height: 176cm Bust: 83cm Waist: 62cm Hips: 94cm Shoe: 7 UK Hair: Black Eyes: Green/Brown

# BOSS MODELS

JOHANNESBURG



ADEOLA ARIYO

Height: 176cm Bust: 83cm Waist: 62cm Hips: 94cm Shoe: 7 UK Hair: Black Eyes: Green/Brown

# BOSS MODELS

JOHANNESBURG



ADEOLA ARIYO

Height: 176cm Bust: 83cm Waist: 62cm Hips: 94cm Shoe: 7 UK Hair: Black Eyes: Green/Brown

# BOSS MODELS

JOHANNESBURG



ADEOLA ARIYO

Height: 176cm Bust: 83cm Waist: 62cm Hips: 94cm Shoe: 7 UK Hair: Black Eyes: Green/Brown

# BOSS MODELS

JOHANNESBURG



ADEOLA ARIYO

Height: 176cm Bust: 83cm Waist: 62cm Hips: 94cm Shoe: 7 UK Hair: Black Eyes: Green/Brown

# BOSS MODELS

JOHANNESBURG



ADEOLA ARIYO

Height: 176cm Bust: 83cm Waist: 62cm Hips: 94cm Shoe: 7 UK Hair: Black Eyes: Green/Brown

# BOSS MODELS

JOHANNESBURG



ADEOLA ARIYO

Height: 176cm Bust: 83cm Waist: 62cm Hips: 94cm Shoe: 7 UK Hair: Black Eyes: Green/Brown



# BOSS MODELS

JOHANNESBURG



### 3. MODERN MUSE

To keep your look contemporary, opt for mixed-metal trimmings and layer your wrist pieces over your garments - nothing should go unnoticed!

Jersey, R440, Truewatts; jacket, R2 499, Country Road; pants, R3 800, Replay; earrings, R1 800, Phillipa Green; necklace, R1 400, Kaka Jewellery; right hand: watch, R3 499, DKNY at Watch Republic; index-finger-plain bands, R299 each, Country Road; diamond-shape ring, R1 350, and middle-finger ring, R1 150, both Black Betty; ring-finger ring, R199, American Swiss; left hand: ring, R1 350, Kaka Jewellery



### 4. COLOUR CONTRAST

When matching your jewellery to your outfit, go for contrasting tones. Here, warm rose golds offset cool greys perfectly.

Knit dress, R799, Forever New; jacket, R4 500, Replay; nine-carat gold ear cuffs, R2 395 each, SkanesAndFashion.com; necklace, R359, Zara; left hand: buckle-style ring, R800, and rotating ball ring, R900, both Kaka; skerry cuff, R1 299, American Swiss; charm bracelet, R999, Guess at S Bacher & Co; watch, R599, Tempo at Sterns; right hand: double-finger ring, R150, Lovisa

ADEOLA ARIYO

Height: 176cm Bust: 83cm Waist: 62cm Hips: 94cm Shoe: 7 UK Hair: Black Eyes: Green/Brown

# BOSS MODELS

JOHANNESBURG

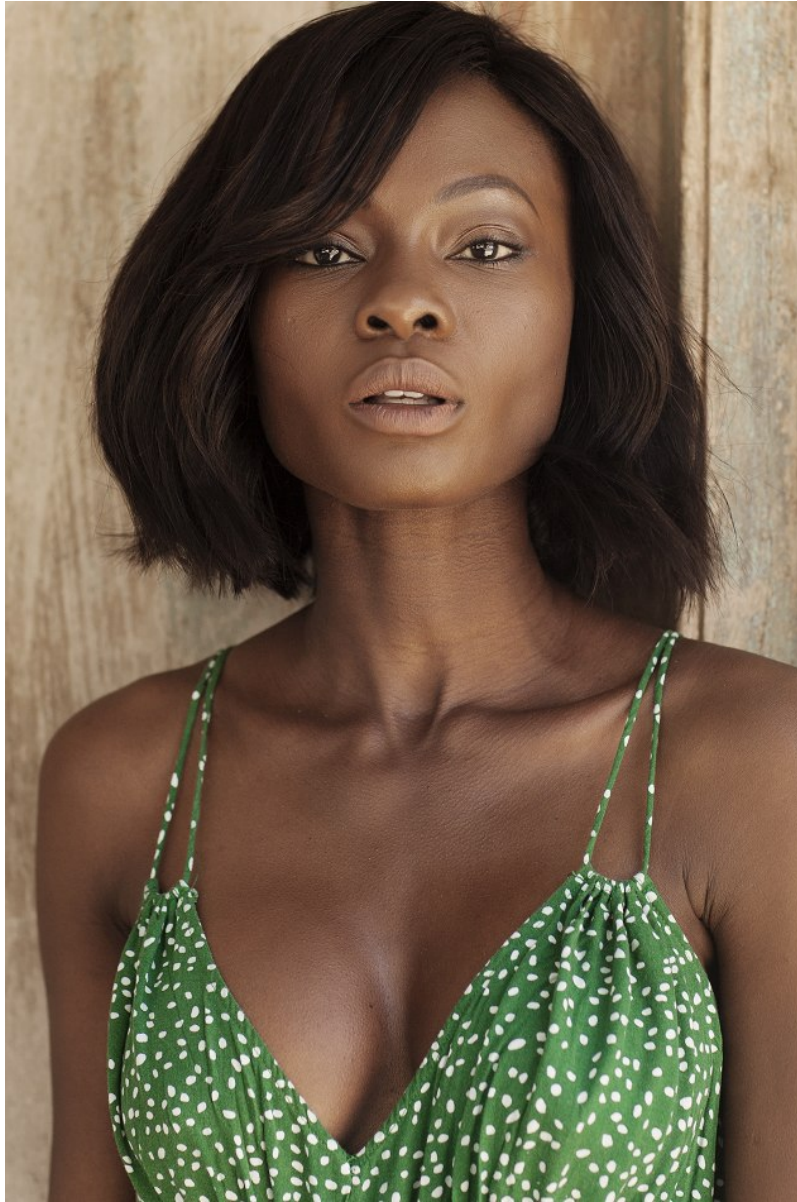


ADEOLA ARIYO

Height: 176cm Bust: 83cm Waist: 62cm Hips: 94cm Shoe: 7 UK Hair: Black Eyes: Green/Brown

# BOSS MODELS

JOHANNESBURG

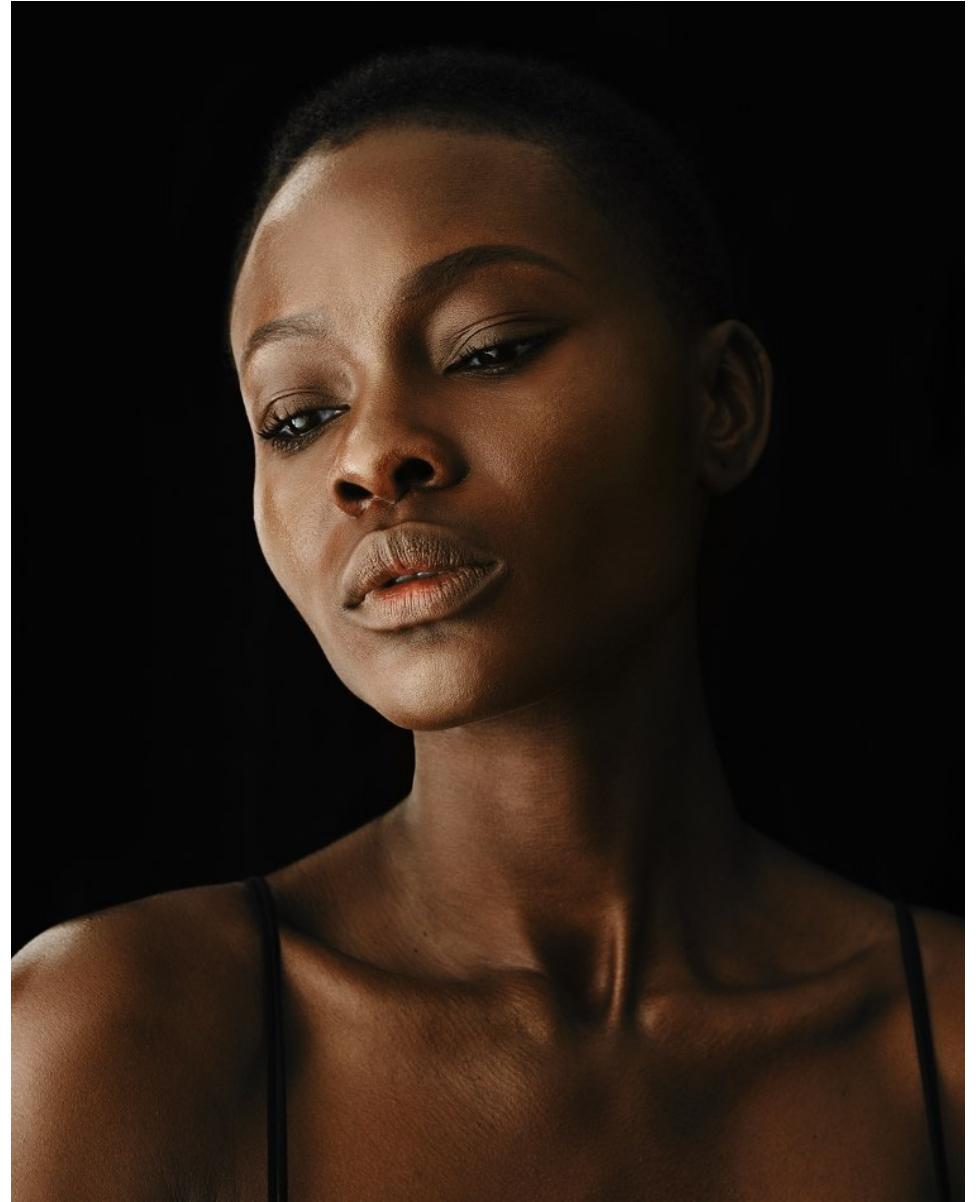


ADEOLA ARIYO

Height: 176cm Bust: 83cm Waist: 62cm Hips: 94cm Shoe: 7 UK Hair: Black Eyes: Green/Brown

# BOSS MODELS

JOHANNESBURG



ADEOLA ARIYO

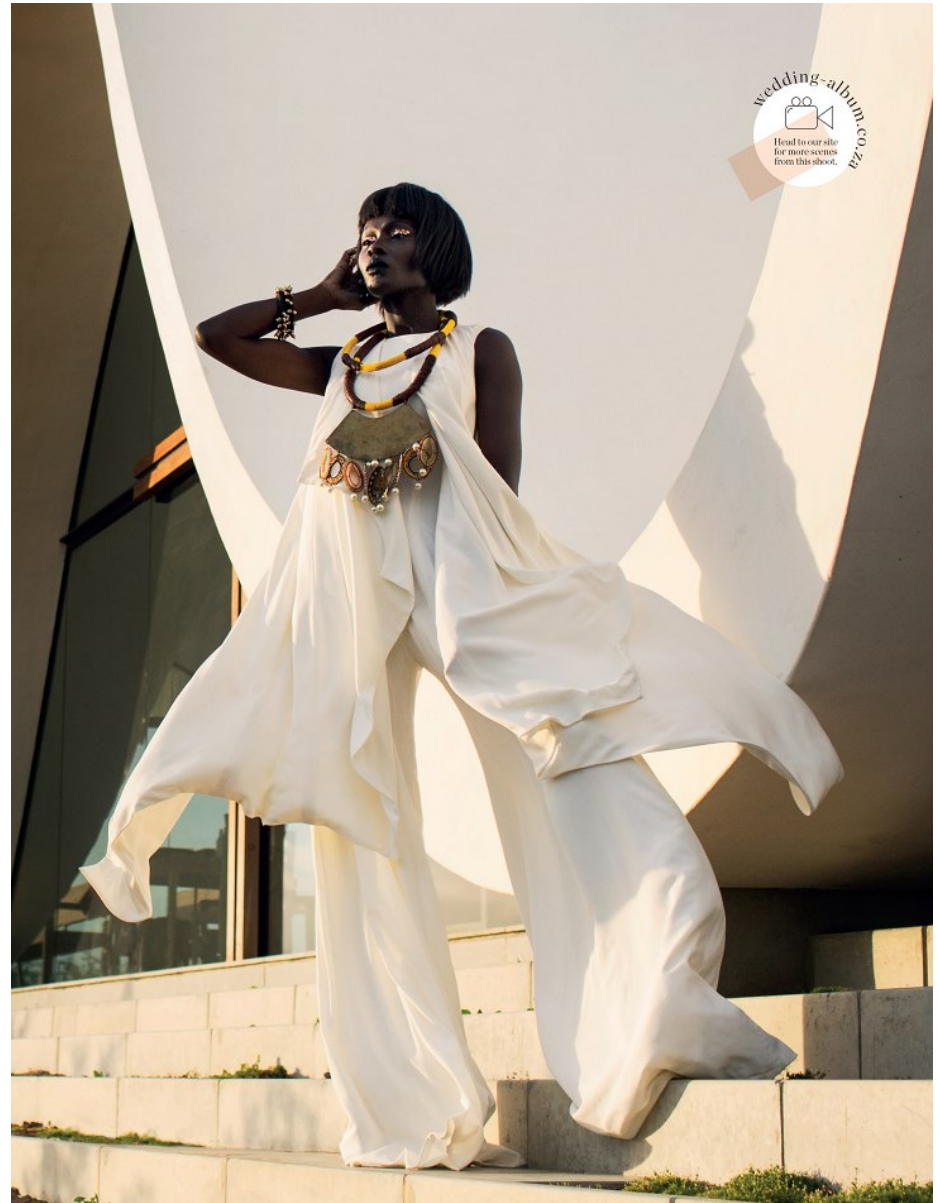
Height: 176cm Bust: 83cm Waist: 62cm Hips: 94cm Shoe: 7 UK Hair: Black Eyes: Green/Brown

# BOSS MODELS

JOHANNESBURG



EVEN THE MOST UNDERSTATED  
WARDROBE CAN SCREAM "GLAM!" HOW? YOUR  
ACCESSORIES ARE THE JEWEL IN THE CROWN



ADEOLA ARIYO

Height: 176cm Bust: 83cm Waist: 62cm Hips: 94cm Shoe: 7 UK Hair: Black Eyes: Green/Brown

# BOSS MODELS

JOHANNESBURG



ADEOLA ARIYO

Height: 176cm Bust: 83cm Waist: 62cm Hips: 94cm Shoe: 7 UK Hair: Black Eyes: Green/Brown

# BOSS MODELS

JOHANNESBURG



ADEOLA ARIYO

Height: 176cm Bust: 83cm Waist: 62cm Hips: 94cm Shoe: 7 UK Hair: Black Eyes: Green/Brown

# BOSS MODELS

JOHANNESBURG



## ADEOLA ARIYO

Height: 176cm Bust: 83cm Waist: 62cm Hips: 94cm Shoe: 7 UK Hair: Black Eyes: Green/Brown



# BOSS MODELS

JOHANNESBURG



ADEOLA ARIYO

Height: 176cm Bust: 83cm Waist: 62cm Hips: 94cm Shoe: 7 UK Hair: Black Eyes: Green/Brown

# BOSS MODELS

JOHANNESBURG

## You mean business

*Simply add your jacket and tie it all together with a belt*



Perfect Trench Jacket (R1350), Label Femme  
Zayden coat dress (R1599), Pringle  
Studded Heels (R990), Sam Star  
Patent bag (R799), Paula Design  
Necklace - cancelled

*As seen on spree.co.za*

## Call of the wild

*Cropped trousers and a sleeveless trench transforms from effortless summer style to a winter classic with the addition of snug faux fur.*



Celebrity Faux fur jacket (R1450), Fate  
Quinn sleeveless trench jacket (R1499), Pringle  
Spotted jacquard pants (R920), Gordon Smith  
Animal-print Midi-heels (R370), Pierre Cardin

*As seen on spree.co.za*

## ADEOLA ARIYO

Height: 176cm Bust: 83cm Waist: 62cm Hips: 94cm Shoe: 7 UK Hair: Black Eyes: Green/Brown

# BOSS MODELS

JOHANNESBURG



## 1. STACK IT UP

Think: the more, the merrier. When stacking rings on one hand, be sure to leave a finger free and use different shapes and sizes. Otherwise opt for a multi-finger ring – but you can always wear both!

Shirt, R1 500, Banana Republic at Stuttafords; coat, R1 495, Label Femme at Label Collections; pants, R459, Zara; ear cuff, R180, Louise; four-finger bar ring, R1 499, American Swiss; cuff, R2 100, Philipp Green; stacked rings, R249 for set of four, Country Road; silver V-ring, R920, NIVA

## 2. ETHNIC TWIST

You love tribal, but want to go for a more elegant look? Gold geometric cuffs and earrings are your ticket. Just make sure your rings are pared back enough to let them shine.

Top, R809, Topshop; cocoon coat, R4 000, Banana Republic at Stuttafords; earrings, R2 275, Black Betty; left hand: rings, R299 for set, Accessorize; watch, R1 795, Guess at S'Becher & Co; right hand: gold cuff, R1 750, Kirsten Goss; square ring, R1 900, and plain bands, R1 100 each, all AtsMeyHeatherco.za

By Mari Groenewald

PHOTOGRAPHS BY  
JONATHAN TAYLOR



ADEOLA ARIYO

Height: 176cm Bust: 83cm Waist: 62cm Hips: 94cm Shoe: 7 UK Hair: Black Eyes: Green/Brown