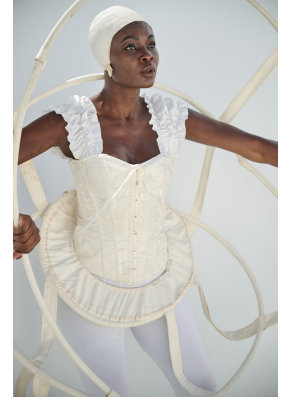
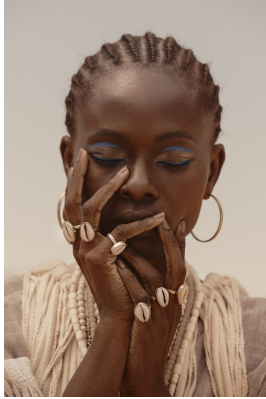


# BOSS MODELS

JOHANNESBURG



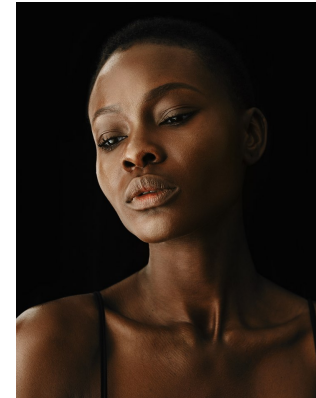
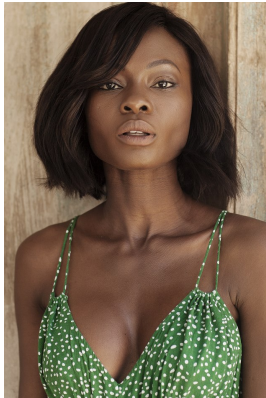
ADEOLA ARIYO

Height: 176cm Bust: 83cm Waist: 62cm Hips: 94cm Shoe: 7 UK Hair: Black Eyes: Green/Brown



# BOSS MODELS

JOHANNESBURG



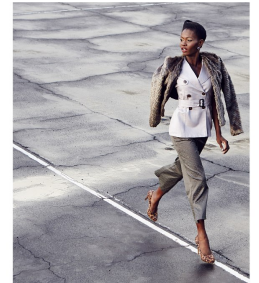
**You mean business**  
Simply add your jacket and tie it all together with a belt



Perfect Trench Jacket (81320), Label Femme  
Zayden coat dress (81559), Pringle  
Studded Heels (8990), Sun Star  
Robert bag (87789), Prada Design  
Necklace - cancelled

As seen on [www.specco.co.za](http://www.specco.co.za)

**Call of the wild**  
Cropped trousers and a shaggy trench transform from effortless summer style to a winter classic with the addition of snazzy fur.



Celebrity Fur fur jacket (81460), Fate  
Quinn sleeveless trench jacket (81499), Pringle  
Sported jacquard pants (81920), Gorenz Smith  
Armani-ette High-heels (83202), Pierre Cardin

As seen on [www.specco.co.za](http://www.specco.co.za)

## ADEOLA ARIYO

Height: 176cm Bust: 83cm Waist: 62cm Hips: 94cm Shoe: 7 UK Hair: Black Eyes: Green/Brown

# BOSS MODELS

JOHANNESBURG



## ADEOLA ARIYO

Height: 176cm Bust: 83cm Waist: 62cm Hips: 94cm Shoe: 7 UK Hair: Black Eyes: Green/Brown