

BOSS MODELS

JOHANNESBURG



ADEOLA ARIYO

Height: 176cm Bust: 83cm Waist: 62cm Hips: 94cm Shoe: 7 UK Hair: Black Eyes: Green/Brown

BOSS MODELS

JOHANNESBURG



ADEOLA ARIYO

Height: 176cm Bust: 83cm Waist: 62cm Hips: 94cm Shoe: 7 UK Hair: Black Eyes: Green/Brown

BOSS MODELS

JOHANNESBURG



ADEOLA ARIYO

Height: 176cm Bust: 83cm Waist: 62cm Hips: 94cm Shoe: 7 UK Hair: Black Eyes: Green/Brown

BOSS MODELS

JOHANNESBURG



ADEOLA ARIYO

Height: 176cm Bust: 83cm Waist: 62cm Hips: 94cm Shoe: 7 UK Hair: Black Eyes: Green/Brown

BOSS MODELS

JOHANNESBURG



ADEOLA ARIYO

Height: 176cm Bust: 83cm Waist: 62cm Hips: 94cm Shoe: 7 UK Hair: Black Eyes: Green/Brown

BOSS MODELS

JOHANNESBURG



ADEOLA ARIYO

Height: 176cm Bust: 83cm Waist: 62cm Hips: 94cm Shoe: 7 UK Hair: Black Eyes: Green/Brown

BOSS MODELS

JOHANNESBURG



ADEOLA ARIYO

Height: 176cm Bust: 83cm Waist: 62cm Hips: 94cm Shoe: 7 UK Hair: Black Eyes: Green/Brown

BOSS MODELS

JOHANNESBURG



ADEOLA ARIYO

Height: 176cm Bust: 83cm Waist: 62cm Hips: 94cm Shoe: 7 UK Hair: Black Eyes: Green/Brown

BOSS MODELS

JOHANNESBURG



ADEOLA ARIYO

Height: 176cm Bust: 83cm Waist: 62cm Hips: 94cm Shoe: 7 UK Hair: Black Eyes: Green/Brown

BOSS MODELS

JOHANNESBURG



ADEOLA ARIYO

Height: 176cm Bust: 83cm Waist: 62cm Hips: 94cm Shoe: 7 UK Hair: Black Eyes: Green/Brown

BOSS MODELS

JOHANNESBURG



ADEOLA ARIYO

Height: 176cm Bust: 83cm Waist: 62cm Hips: 94cm Shoe: 7 UK Hair: Black Eyes: Green/Brown

BOSS MODELS

JOHANNESBURG



ADEOLA ARIYO

Height: 176cm Bust: 83cm Waist: 62cm Hips: 94cm Shoe: 7 UK Hair: Black Eyes: Green/Brown

BOSS MODELS

JOHANNESBURG



ADEOLA ARIYO

Height: 176cm Bust: 83cm Waist: 62cm Hips: 94cm Shoe: 7 UK Hair: Black Eyes: Green/Brown

BOSS MODELS

JOHANNESBURG



3.

MODERN MUSE

To keep your look contemporary, opt for mixed-metal trimmings and layer your wrist pieces over your garments - nothing should go unnoticed!

Jersey, R440, *Truwartha*; jacket, R2 499, *Country Road*; pants, R3 800, *Replay*; earrings, R1 800, *Phylippe Green*; necklace, R1 400, *Kaka Jewellery*; right hand: watch, R3 499, *DKNY* at *Watch Republic*; index-finger plain bands, R299 each, *Country Road*; diamond-shape ring, R1 390, and middle-finger ring, R1 150, both *Black Betty*; ring-finger ring, R199, *American Swiss*; left hand: ring, R1 350, *Kaka Jewellery*

ADEOLA ARIYO

Height: 176cm Bust: 83cm Waist: 62cm Hips: 94cm Shoe: 7 UK Hair: Black Eyes: Green/Brown

BOSS MODELS

JOHANNESBURG



4.

COLOUR CONTRAST

When matching your jewellery to your outfit, go for contrasting tones. Here, warm rose golds offset cool greys perfectly.

Knit dress, R799, Forever New; jacket, R4 500, Replay; nine-carat gold ear cuffs, R2 395 each, SioaneAndMaolison.com; necklace, R359, Zara; left hand: buckle-style ring, R800, and rotating ball ring, R900, both Noble; skinny cuff, R1 299, American Swiss; charm bracelet, R999, Guess at S Bacher & Co; watch, R599, Tempo at Sterns; right hand: double-finger ring, R130, Lovisa

August 2015 / WOMEN'S HEALTH

ADEOLA ARIYO

Height: 176cm Bust: 83cm Waist: 62cm Hips: 94cm Shoe: 7 UK Hair: Black Eyes: Green/Brown

BOSS MODELS

JOHANNESBURG



ADEOLA ARIYO

Height: 176cm Bust: 83cm Waist: 62cm Hips: 94cm Shoe: 7 UK Hair: Black Eyes: Green/Brown

BOSS MODELS

JOHANNESBURG



ADEOLA ARIYO

Height: 176cm Bust: 83cm Waist: 62cm Hips: 94cm Shoe: 7 UK Hair: Black Eyes: Green/Brown

BOSS MODELS

JOHANNESBURG



ADEOLA ARIYO

Height: 176cm Bust: 83cm Waist: 62cm Hips: 94cm Shoe: 7 UK Hair: Black Eyes: Green/Brown

BOSS MODELS

JOHANNESBURG



ADEOLA ARIYO

Height: 176cm Bust: 83cm Waist: 62cm Hips: 94cm Shoe: 7 UK Hair: Black Eyes: Green/Brown

BOSS MODELS

JOHANNESBURG

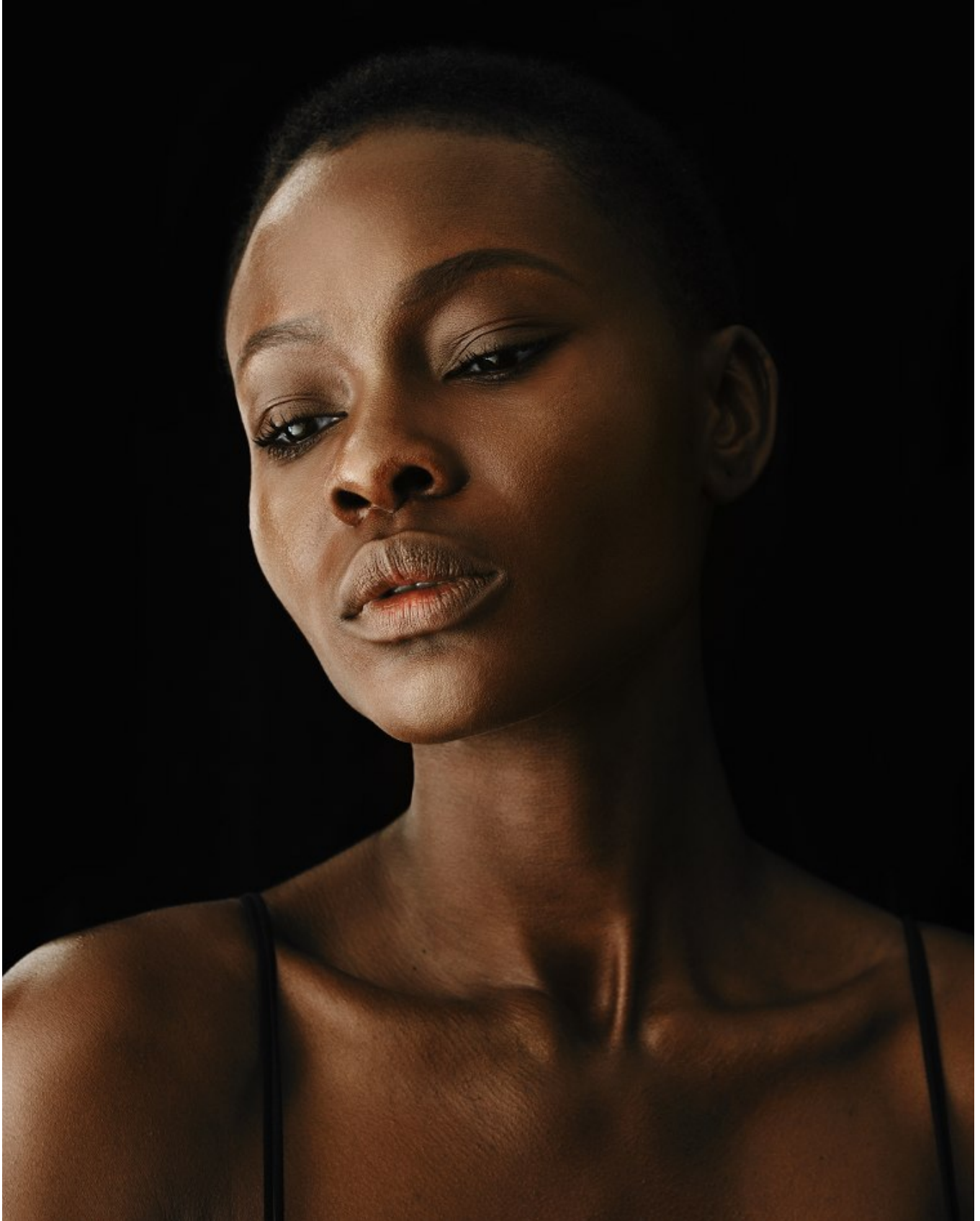


ADEOLA ARIYO

Height: 176cm Bust: 83cm Waist: 62cm Hips: 94cm Shoe: 7 UK Hair: Black Eyes: Green/Brown

BOSS MODELS

JOHANNESBURG



ADEOLA ARIYO

Height: 176cm Bust: 83cm Waist: 62cm Hips: 94cm Shoe: 7 UK Hair: Black Eyes: Green/Brown

BOSS MODELS

JOHANNESBURG



EVEN THE MOST UNDERSTATED
WARDROBE CAN SCREAM "GLAM!" HOW? YOUR
ACCESSORIES ARE THE JEWEL IN THE CROWN

ADEOLA ARIYO

Height: 176cm Bust: 83cm Waist: 62cm Hips: 94cm Shoe: 7 UK Hair: Black Eyes: Green/Brown

BOSS MODELS

JOHANNESBURG



ADEOLA ARIYO

Height: 176cm Bust: 83cm Waist: 62cm Hips: 94cm Shoe: 7 UK Hair: Black Eyes: Green/Brown

BOSS MODELS

JOHANNESBURG



ADEOLA ARIYO

Height: 176cm Bust: 83cm Waist: 62cm Hips: 94cm Shoe: 7 UK Hair: Black Eyes: Green/Brown

BOSS MODELS

JOHANNESBURG



ADEOLA ARIYO

Height: 176cm Bust: 83cm Waist: 62cm Hips: 94cm Shoe: 7 UK Hair: Black Eyes: Green/Brown

BOSS MODELS

JOHANNESBURG



ADEOLA ARIYO

Height: 176cm Bust: 83cm Waist: 62cm Hips: 94cm Shoe: 7 UK Hair: Black Eyes: Green/Brown

BOSS MODELS

JOHANNESBURG



ADEOLA ARIYO

Height: 176cm Bust: 83cm Waist: 62cm Hips: 94cm Shoe: 7 UK Hair: Black Eyes: Green/Brown

BOSS MODELS

JOHANNESBURG

Filipiassi M
MASSONI



24

FACES JULI / AUGUST 2017

FACES JULI / AUGUST 2017

25

ADEOLA ARIYO

Height: 176cm Bust: 83cm Waist: 62cm Hips: 94cm Shoe: 7 UK Hair: Black Eyes: Green/Brown

BOSS MODELS

JOHANNESBURG



ADEOLA ARIYO

Height: 176cm Bust: 83cm Waist: 62cm Hips: 94cm Shoe: 7 UK Hair: Black Eyes: Green/Brown

BOSS MODELS

JOHANNESBURG



ADEOLA ARIYO

Height: 176cm Bust: 83cm Waist: 62cm Hips: 94cm Shoe: 7 UK Hair: Black Eyes: Green/Brown

BOSS MODELS

JOHANNESBURG

You mean business
Simply add your jacket and tie it all together with a belt



Perfect Trench Jacket (R1350), Label Femme
Zayden coat dress (R1599), Pringle
Studded Heels (R990), Sam Star
Patent bag (R799), Paula Design
Necklace - cancelled

As seen on spree.co.za

ADEOLA ARIYO

Height: 176cm Bust: 83cm Waist: 62cm Hips: 94cm Shoe: 7 UK Hair: Black Eyes: Green/Brown

BOSS MODELS

JOHANNESBURG

Call of the wild

Cropped trousers and a sleeveless trench transforms from effortless summer style to a winter classic with the addition of snug faux fur.



Celebrity Faux fur jacket (R1450), Fate
Quinn sleeveless trench jacket (R1499), Pringle
Spotted jacquard pants (R920), Gordon Smith
Animal-print Midi-heels (R370), Pierre Cardin

As seen on spree.co.za

ADEOLA ARIYO

Height: 176cm Bust: 83cm Waist: 62cm Hips: 94cm Shoe: 7 UK Hair: Black Eyes: Green/Brown

BOSS MODELS

JOHANNESBURG



By Mari Groenewald

PHOTOGRAPHS BY
JONATHAN TAYLOR

1. STACK IT UP

Think: the more, the merrier. When stacking rings on one hand, be sure to leave a finger free and use different shapes and sizes. Otherwise opt for a multi-finger ring – but you can always wear both!

Shirt, R1500, Banana Republic at Stuttafords; coat, R1495, Label Femme at Label Collections; pants, R459, Zara; ear cuff, R180, Lavis; four-finger bar ring, R1499, American Swiss; cuff, R2100, Philippa Green; stacked rings, R549 for set of four, Country Road; silver V-ring, R920, NKK

2. ETHNIC TWIST

You love tribal, but want to go for a more elegant look? Gold geometric cuffs and earrings are your ticket. Just make sure your rings are pared back enough to let them shine.

Top, R809, Topshop; cocoon coat, R4000, Banana Republic at Stuttafords; earrings, R2275, Black Betty; left hand: rings, R299 for set, Accessorize; watch, R1795, Guess at S Bacher & Co; right hand: gold cuff, R1750, Kirsten Goss; square ring, R1900, and plain bands, R1100 each, all AshleyHeather.co.za

ADEOLA ARIYO

Height: 176cm Bust: 83cm Waist: 62cm Hips: 94cm Shoe: 7 UK Hair: Black Eyes: Green/Brown

BOSS MODELS

JOHANNESBURG



ADEOLA ARIYO

Height: 176cm Bust: 83cm Waist: 62cm Hips: 94cm Shoe: 7 UK Hair: Black Eyes: Green/Brown