

BOSS MODELS

JOHANNESBURG



ADEOLA ARIYO

Height: 176cm Bust: 83cm Waist: 62cm Hips: 94cm Shoe: 7 UK Hair: Black Eyes: Green/Brown

BOSS MODELS

JOHANNESBURG



ADEOLA ARIYO

Height: 176cm Bust: 83cm Waist: 62cm Hips: 94cm Shoe: 7 UK Hair: Black Eyes: Green/Brown

BOSS MODELS

JOHANNESBURG



ADEOLA ARIYO

Height: 176cm Bust: 83cm Waist: 62cm Hips: 94cm Shoe: 7 UK Hair: Black Eyes: Green/Brown

BOSS MODELS

JOHANNESBURG



ADEOLA ARIYO

Height: 176cm Bust: 83cm Waist: 62cm Hips: 94cm Shoe: 7 UK Hair: Black Eyes: Green/Brown

BOSS MODELS

JOHANNESBURG



3. MODERN MUSE

To keep your look contemporary, opt for mixed-metal trappings and layer your wrist pieces over your garments – nothing should go unnoticed!

Jersey: 0483, Theslerle jacket, R2 499, Country Road pants, R2 500, Rothy earrings, R1 800, Prolux Green necklace, R1 400, Koko jewelry, right-hand watch, R2 499, D&B at Wood Doublet, rose-finger-plain bands, R299 each, Country Road diamond chain ring, R1 500, and middle-finger ring, R1 500, both Black & Blush ring, finger ring, R169, American Gem, left-hand ring, R1 500, Koko Jewelry

124 WOMEN'S HEALTH / August 2015 / women'shealth.co.za



4. COLOUR CONTRAST

When matching your jewellery to your outfit, go for contrasting tones. Here, warm rose golds offset cool greys perfectly.

Knit dress, R299, Forever Rose jacket, R1 500, Rothy rose-gold ear cuffs, R2 399 each, Diamond/Blackstone.com necklace, R169, Zuni left-hand double-ring, R200, and matching left ring, R100, both Koko; silver cuff, R1 299, American Gem; diamond band, R199, Gemz at 5; Blcher 8.25 watch, R159, Gemz at 5; rose-gold double-finger ring, R150, Luvise

August 2015 / WOMEN'S HEALTH

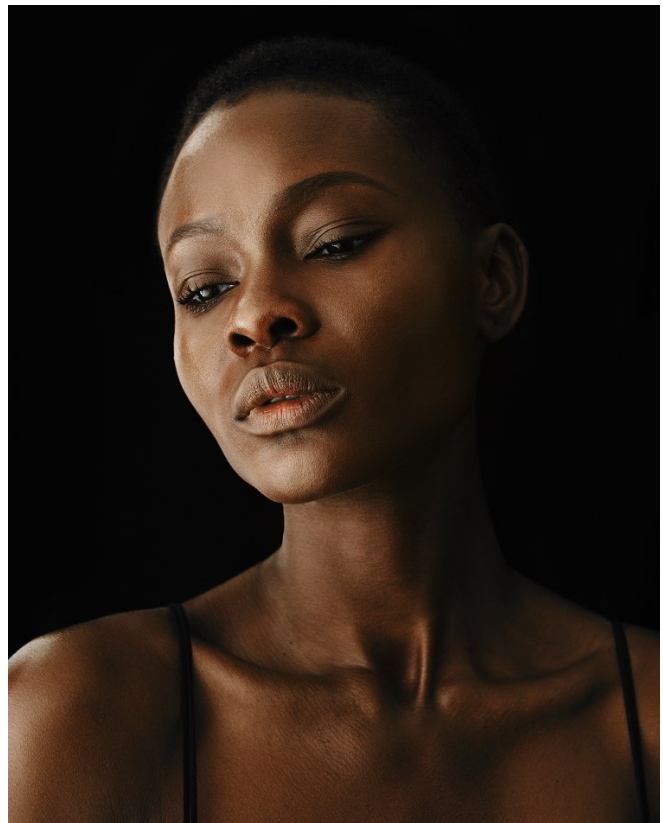
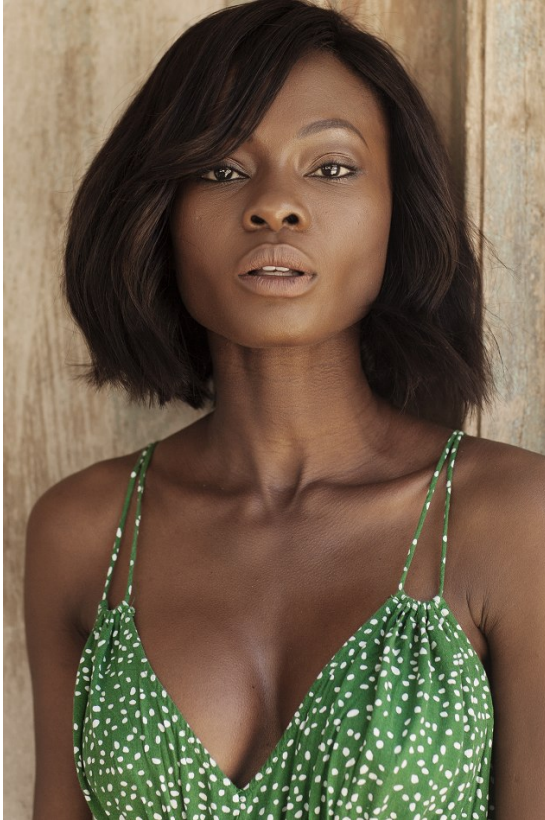


ADEOLA ARIYO

Height: 176cm Bust: 83cm Waist: 62cm Hips: 94cm Shoe: 7 UK Hair: Black Eyes: Green/Brown

BOSS MODELS

JOHANNESBURG

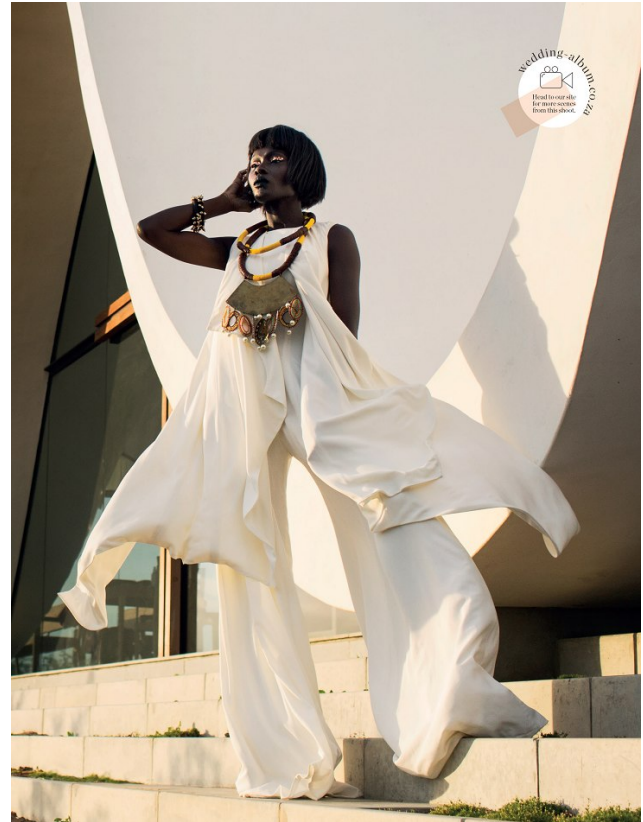


ADEOLA ARIYO

Height: 176cm Bust: 83cm Waist: 62cm Hips: 94cm Shoe: 7 UK Hair: Black Eyes: Green/Brown

BOSS MODELS

JOHANNESBURG



ADEOLA ARIYO

Height: 176cm Bust: 83cm Waist: 62cm Hips: 94cm Shoe: 7 UK Hair: Black Eyes: Green/Brown

BOSS MODELS

JOHANNESBURG



ADEOLA ARIYO

Height: 176cm Bust: 83cm Waist: 62cm Hips: 94cm Shoe: 7 UK Hair: Black Eyes: Green/Brown

BOSS MODELS

JOHANNESBURG



You mean business

Simply add your jacket and tie it all together with a belt



Call of the wild

Cropped trousers and a sleeveless trench transforms from effortless summer style to a winter classic with the addition of snug faux fur.



Perfect Trench Jacket (R1350), Label Femme
Zayden coat dress (R1599), Pringle
Studded Heels (R990), Sam Star
Patent bag (R799), Paula Design
Necklace - cancelled

As seen on spreec.co.za



Celebrity Faux fur jacket (R1450), Fate
Quinn sleeveless trench jacket (R1499), Pringle
Spotted jacquard pants (R920), Gordon Smith
Animal-print Midi-heels (R370), Pierre Cardin

As seen on spreec.co.za

ADEOLA ARIYO

Height: 176cm Bust: 83cm Waist: 62cm Hips: 94cm Shoe: 7 UK Hair: Black Eyes: Green/Brown

BOSS MODELS

JOHANNESBURG



1. STACK IT UP

Think the more, the merrier. When stacking rings on one hand, be sure to leave a finger free and use different shapes and sizes. Otherwise opt for a multi-finger ring - but you can always wear both!

Suit, R1 500; Banana Republic at Durbanville coat, R4 495; Label Femme at Label Collection; pants, R4 995; Fine for cuff, R180; Lovers four-finger bar ring, R1 495; American Gemma cuff, R3 700; Pique Dress; stacked rings, R543 for set of four; Country Good shoe rings, R920; A907

2. ETHNIC TWIST

You love tribal, but want to go for a more elegant look? Gold geometric cuffs and earrings are your ticket. Just make sure your rings are pared back enough to let them shine.

Top, R8109; Banana Republic at Durbanville; cocoon coat, R3 700; Banana Republic at Durbanville; earrings, R2 275; Blank script set; hand rings, R299 for set; Accessoire watch, R1 700; Swave at 2 Blanket & Co; right hand gold cuff, R1 250; Koshin Clinic square ring, R1 900; and slim bands, R1 100 each; all @shoptheemercy.co.za

By Mari Groenewald
PHOTOGRAPHS BY
JONATHAN TAYLOR

122 WOMEN'S HEALTH



ADEOLA ARIYO

Height: 176cm Bust: 83cm Waist: 62cm Hips: 94cm Shoe: 7 UK Hair: Black Eyes: Green/Brown