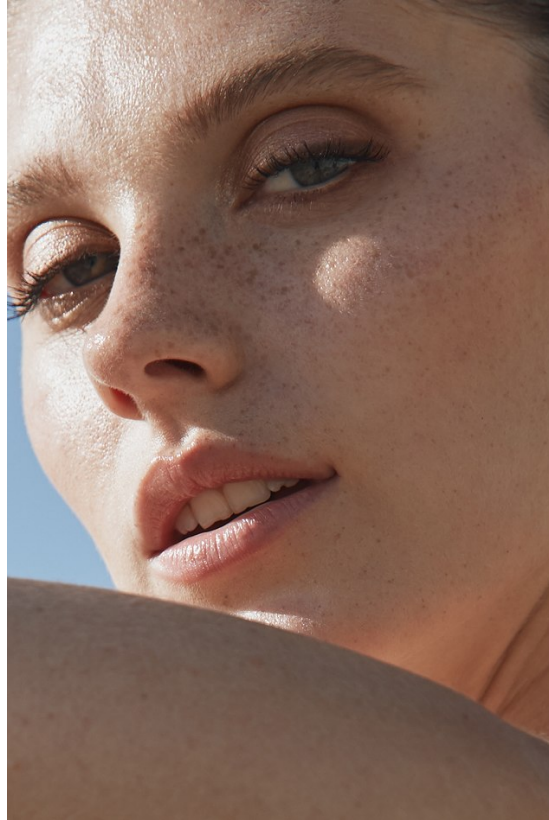


BOSS MODELS

JOHANNESBURG



KAYLA HANSEN

Height: 184cm Bust: 86cm Waist: 65cm Hips: 90cm Shoe: 8 UK Hair: Light Brown Eyes: Blue

BOSS MODELS

JOHANNESBURG



Photography HEIDI RONDAK | www.heidirondak.com | [@heidirondak](https://www.instagram.com/heidirondak)

Model KAYLA HANSEN / BOSS MODELS | www.bossmodels.co.za |

[@kayla_hansen11](https://www.instagram.com/kayla_hansen11) [@bossmodels](https://www.instagram.com/bossmodels)

Styling SAMIR ABOU-SUEDE | www.samirabousuede.com | [@abousuede_samir](https://www.instagram.com/abousuede_samir)

Hair & Make-up NICOLE GRANT | www.nicolegrantmakeup.com | [@nicolegrantmua](https://www.instagram.com/nicolegrantmua)



Fotografie Xenia Lau
Stilistė Sa Rederi
Modelis Kayla Hansen as View Management
Makiažo meistrė Priscila Debra
Fotografijos asistentas Josu Gómez



KAYLA HANSEN

Height: 184cm Bust: 86cm Waist: 65cm Hips: 90cm Shoe: 8 UK Hair: Light Brown Eyes: Blue

BOSS MODELS

JOHANNESBURG



KAYLA HANSEN

Height: 184cm Bust: 86cm Waist: 65cm Hips: 90cm Shoe: 8 UK Hair: Light Brown Eyes: Blue

BOSS MODELS

JOHANNESBURG



KAYLA HANSEN

Height: 184cm Bust: 86cm Waist: 65cm Hips: 90cm Shoe: 8 UK Hair: Light Brown Eyes: Blue

BOSS MODELS

JOHANNESBURG



KAYLA HANSEN

Height: 184cm Bust: 86cm Waist: 65cm Hips: 90cm Shoe: 8 UK Hair: Light Brown Eyes: Blue

BOSS MODELS

JOHANNESBURG



40 rootosco.co.za | JANUARIE 2022



FRANSCHHOEK MAGIC: CHAMBER MUSIC FESTIVAL | ART | FOOD | WINE
FAMILY TIES: LE LUDE'S FAIRYTALE | BUILDING A LEGACY AT HAUTE CABIÈRE



KAYLA HANSEN

Height: 184cm Bust: 86cm Waist: 65cm Hips: 90cm Shoe: 8 UK Hair: Light Brown Eyes: Blue

BOSS MODELS

JOHANNESBURG



KAYLA HANSEN

Height: 184cm Bust: 86cm Waist: 65cm Hips: 90cm Shoe: 8 UK Hair: Light Brown Eyes: Blue

BOSS MODELS

JOHANNESBURG



KAYLA HANSEN

Height: 184cm Bust: 86cm Waist: 65cm Hips: 90cm Shoe: 8 UK Hair: Light Brown Eyes: Blue

BOSS MODELS

JOHANNESBURG



KAYLA HANSEN

Height: 184cm Bust: 86cm Waist: 65cm Hips: 90cm Shoe: 8 UK Hair: Light Brown Eyes: Blue

BOSS MODELS

JOHANNESBURG



KAYLA HANSEN

Height: 184cm Bust: 86cm Waist: 65cm Hips: 90cm Shoe: 8 UK Hair: Light Brown Eyes: Blue

BOSS MODELS

JOHANNESBURG



KAYLA HANSEN

Height: 184cm Bust: 86cm Waist: 65cm Hips: 90cm Shoe: 8 UK Hair: Light Brown Eyes: Blue

BOSS MODELS

JOHANNESBURG



KAYLA HANSEN

Height: 184cm Bust: 86cm Waist: 65cm Hips: 90cm Shoe: 8 UK Hair: Light Brown Eyes: Blue

BOSS MODELS

JOHANNESBURG



KAYLA HANSEN

Height: 184cm Bust: 86cm Waist: 65cm Hips: 90cm Shoe: 8 UK Hair: Light Brown Eyes: Blue

BOSS MODELS

JOHANNESBURG

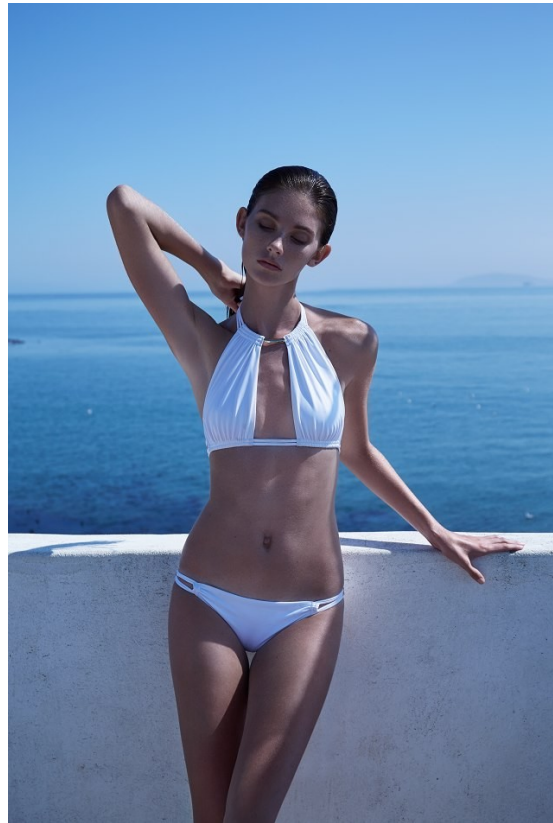


KAYLA HANSEN

Height: 184cm Bust: 86cm Waist: 65cm Hips: 90cm Shoe: 8 UK Hair: Light Brown Eyes: Blue

BOSS MODELS

JOHANNESBURG



KAYLA HANSEN

Height: 184cm Bust: 86cm Waist: 65cm Hips: 90cm Shoe: 8 UK Hair: Light Brown Eyes: Blue

BOSS MODELS

JOHANNESBURG

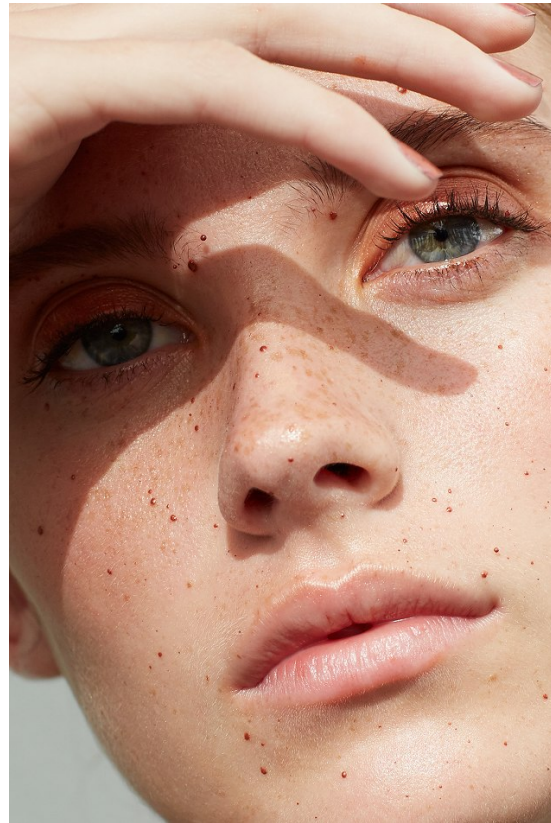
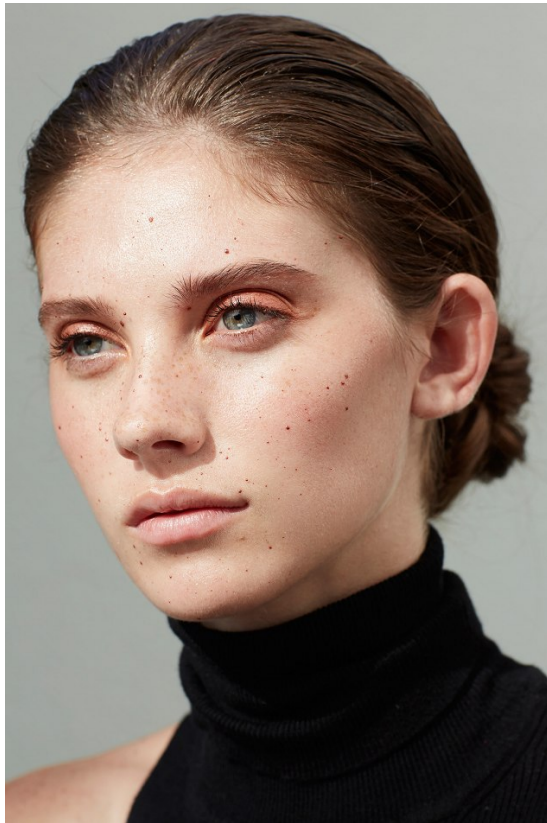


KAYLA HANSEN

Height: 184cm Bust: 86cm Waist: 65cm Hips: 90cm Shoe: 8 UK Hair: Light Brown Eyes: Blue

BOSS MODELS

JOHANNESBURG



KAYLA HANSEN

Height: 184cm Bust: 86cm Waist: 65cm Hips: 90cm Shoe: 8 UK Hair: Light Brown Eyes: Blue

BOSS MODELS

JOHANNESBURG



KAYLA HANSEN

Height: 184cm Bust: 86cm Waist: 65cm Hips: 90cm Shoe: 8 UK Hair: Light Brown Eyes: Blue

BOSS MODELS

JOHANNESBURG



mode

'n Buitengewone nekstuk

Hierdie seisoen se juwele is nie gemaak om by jou uitrusting in te smelt nie. Op die loopplanie was buitengewone waagstukke, soos borsplate en byna-beeldhouwerke te sien. Hierdie unieke nekstuk van tou is met swart en goue draad versier en met saadkrale afgewerk – altesaamhalwe afgedaag! ASHANTI-NEKSTUK VAN TOLU DRAAD EN SAADKRALE (R490) SHAUN NEL, BESKIKBAAR BY KAMERS, FOUND COLLECTION: LEEBBAADJIE (R4 200, OP BESTELLING), KAMERS, LINNETOP (R660, 6-16) HANNAH LAVERY.

ASSISTENT BEALUXSPREKER: LINDA EL OUBREING; OEFEN: JAMMER; HAAR: SUPERKON; MAKEUP: LA MARIEN VAN BOSCH; MODELS

64 | FOCUS | 18 JULIE 2018



KAYLA HANSEN

Height: 184cm Bust: 86cm Waist: 65cm Hips: 90cm Shoe: 8 UK Hair: Light Brown Eyes: Blue