

# BOSS MODELS

JOHANNESBURG



KATHERINE HERBERT

Height: 181cm Bust: 83cm Waist: 66cm Hips: 89cm Shoe: 8 UK Hair: Blonde Eyes: Blue

# BOSS MODELS

JOHANNESBURG

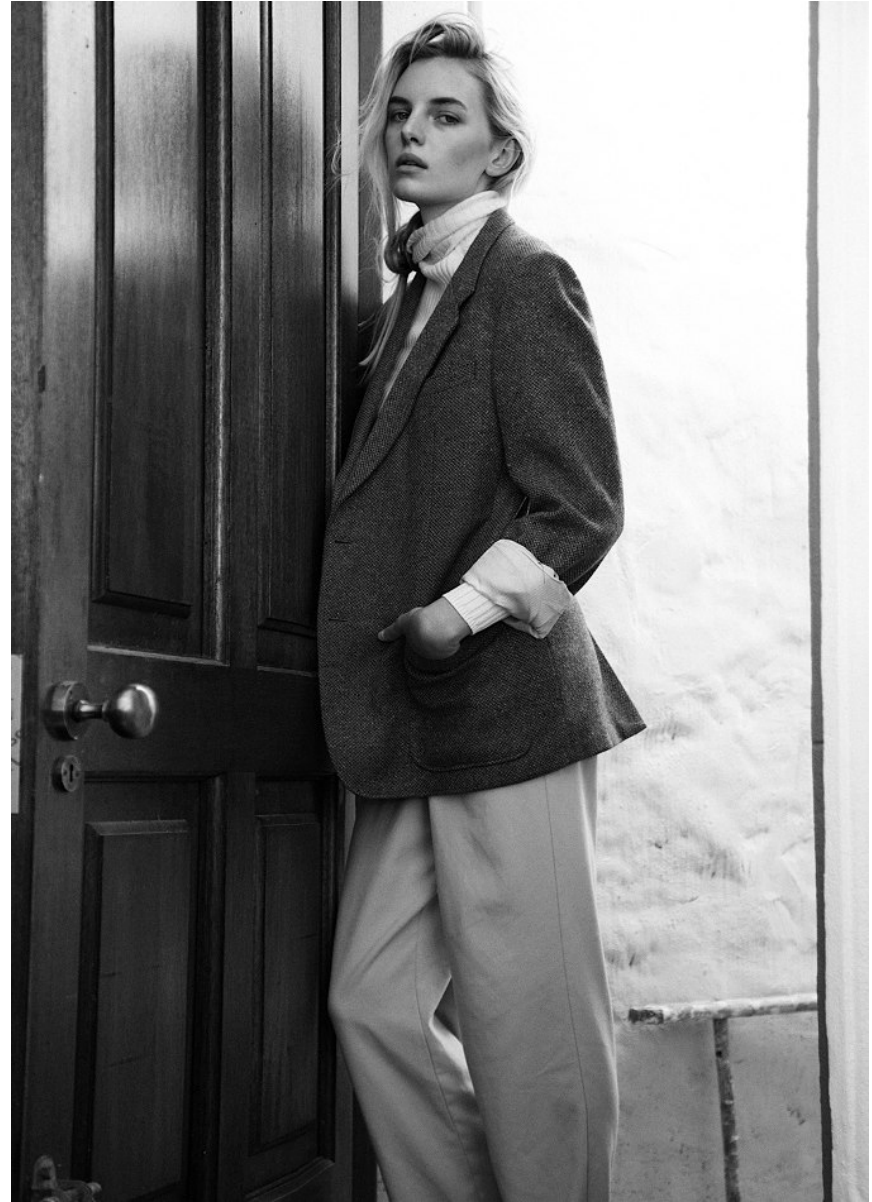


KATHERINE HERBERT

Height: 181cm Bust: 83cm Waist: 66cm Hips: 89cm Shoe: 8 UK Hair: Blonde Eyes: Blue

# BOSS MODELS

JOHANNESBURG



KATHERINE HERBERT

Height: 181cm Bust: 83cm Waist: 66cm Hips: 89cm Shoe: 8 UK Hair: Blonde Eyes: Blue

# BOSS MODELS

JOHANNESBURG

FASHION

## Late BLOOMER

Florals are typically synonymous with spring, but these are not your typical sunny-sky blooms. This crop of botanical prints give the look a moody, wintry twist.

FASHION STYLIST ANNELEE JOUBERT  
PHOTOGRAPHER LIZA VAN DEVENTER

### Dark romance

Create a mysterious, romantic look by combining muted and dark colours with dramatic floral detail. The long, flowy skirt also adds drama.

Premium pullover with floral embroidery (R1 549) Barethreads. Circle-cut skirt (R1 199) H&M Studio.

116 FAIRLADY JULY / AUGUST 2024

## KATHERINE HERBERT

Height: 181cm Bust: 83cm Waist: 66cm Hips: 89cm Shoe: 8 UK Hair: Blonde Eyes: Blue

# BOSS MODELS

JOHANNESBURG

## FASHION

(This page)

### Gather ye rosebuds

Why go for a run-of-the-mill floral knit when you can opt for something a lot more fun, like this bouquet print?! Keep the rest of the look soft and neutral to let this sweater take centre stage.

Bouquet jumper (R1 250) Artho Eksteen. Wide-legged cotton pants (R1099) Baretheads. Printed neckerchief (R769) Zara. Grace 9ct yellow-gold neck chain with Eden coin medallion, and Julietta and Edie heart charms (from R6 500) Russel & Rose.

(Opposite)

### Fluff piece

A short-sleeved knit sounds like a contradiction in terms, but it works so well on those in-between days. This neutral collared one goes with everything – and really lets this beautiful printed skirt shine.

Collared knit top with buttons (R799) H&M. Keiskamma X 1971 linen skirt (R3 600) Nineteenseventy1. Socks (R1 49) Cotton 8n. Tazzele platform open-backed clogs (R2 899) UGG, Trenton.

120 FAIRLADY JULY / AUGUST 2024



## KATHERINE HERBERT

Height: 181cm Bust: 83cm Waist: 66cm Hips: 89cm Shoe: 8 UK Hair: Blonde Eyes: Blue

# BOSS MODELS

JOHANNESBURG



FASHION

## Cosy, quirky, cool

Combine contrasting textures for a look that feels luxe and layered. A rhinestone-embellished collar adds yet another tactile element to this outfit.

Knit sweater with rhinestone back (R6 999) and printed cardigan (R4 299) Zara. Open taupe leather skirt (R1 299) Poetry. Knee-high boots (R1 099) H&M.

122 FAIRLADY JULY / AUGUST 2024



## Wallflower

This versatile quilted jacket in earth tones is the perfect cover-up; it can be dressed down with jeans or layered over a knitted dress.

Quilted cotton jacket in Forest & Rust (R790) Exotic Mangold. Happy Turtles top (R790) Asha Eleven. Leather cord (R25.60 per metre) Beaded Creations. Grace 9ct yellow-gold neck chain with Eden coin medallion, and Julietta and Edie heart charms (from R6 500) Russel & Rose.

## KATHERINE HERBERT

Height: 181cm Bust: 83cm Waist: 66cm Hips: 89cm Shoe: 8 UK Hair: Blonde Eyes: Blue

# BOSS MODELS

JOHANNESBURG



**KATHERINE HERBERT**

Height: 181cm Bust: 83cm Waist: 66cm Hips: 89cm Shoe: 8 UK Hair: Blonde Eyes: Blue

# BOSS MODELS

JOHANNESBURG



KATHERINE HERBERT

Height: 181cm Bust: 83cm Waist: 66cm Hips: 89cm Shoe: 8 UK Hair: Blonde Eyes: Blue



# BOSS MODELS

JOHANNESBURG



## KATHERINE HERBERT

Height: 181cm Bust: 83cm Waist: 66cm Hips: 89cm Shoe: 8 UK Hair: Blonde Eyes: Blue

# BOSS MODELS

JOHANNESBURG



KATHERINE HERBERT

Height: 181cm Bust: 83cm Waist: 66cm Hips: 89cm Shoe: 8 UK Hair: Blonde Eyes: Blue

# BOSS MODELS

JOHANNESBURG



KATHERINE HERBERT

Height: 181cm Bust: 83cm Waist: 66cm Hips: 89cm Shoe: 8 UK Hair: Blonde Eyes: Blue

# BOSS MODELS

JOHANNESBURG



KATHERINE HERBERT

Height: 181cm Bust: 83cm Waist: 66cm Hips: 89cm Shoe: 8 UK Hair: Blonde Eyes: Blue

# BOSS MODELS

JOHANNESBURG



KATHERINE HERBERT

Height: 181cm Bust: 83cm Waist: 66cm Hips: 89cm Shoe: 8 UK Hair: Blonde Eyes: Blue

# BOSS MODELS

JOHANNESBURG

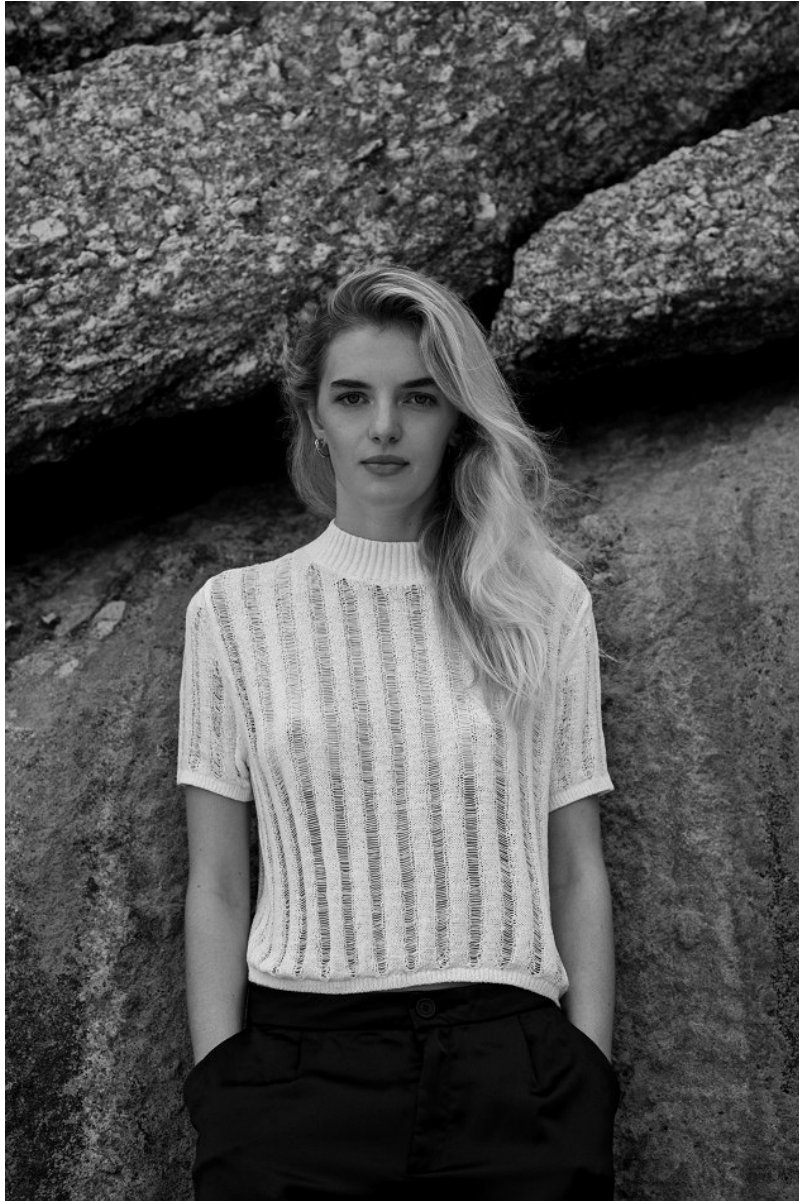


KATHERINE HERBERT

Height: 181cm Bust: 83cm Waist: 66cm Hips: 89cm Shoe: 8 UK Hair: Blonde Eyes: Blue

# BOSS MODELS

JOHANNESBURG



KATHERINE HERBERT

Height: 181cm Bust: 83cm Waist: 66cm Hips: 89cm Shoe: 8 UK Hair: Blonde Eyes: Blue

# BOSS MODELS

JOHANNESBURG



KATHERINE HERBERT

Height: 181cm Bust: 83cm Waist: 66cm Hips: 89cm Shoe: 8 UK Hair: Blonde Eyes: Blue



# BOSS MODELS

JOHANNESBURG

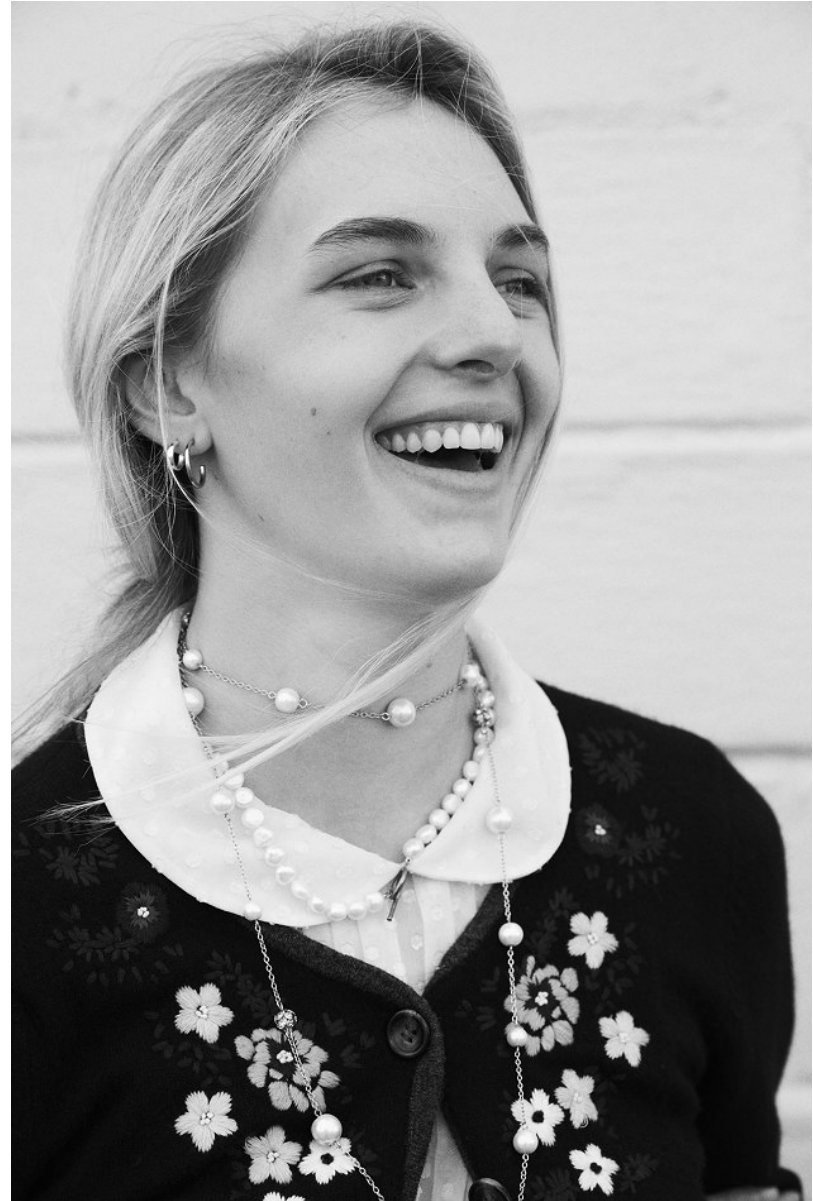


KATHERINE HERBERT

Height: 181cm Bust: 83cm Waist: 66cm Hips: 89cm Shoe: 8 UK Hair: Blonde Eyes: Blue

# BOSS MODELS

JOHANNESBURG

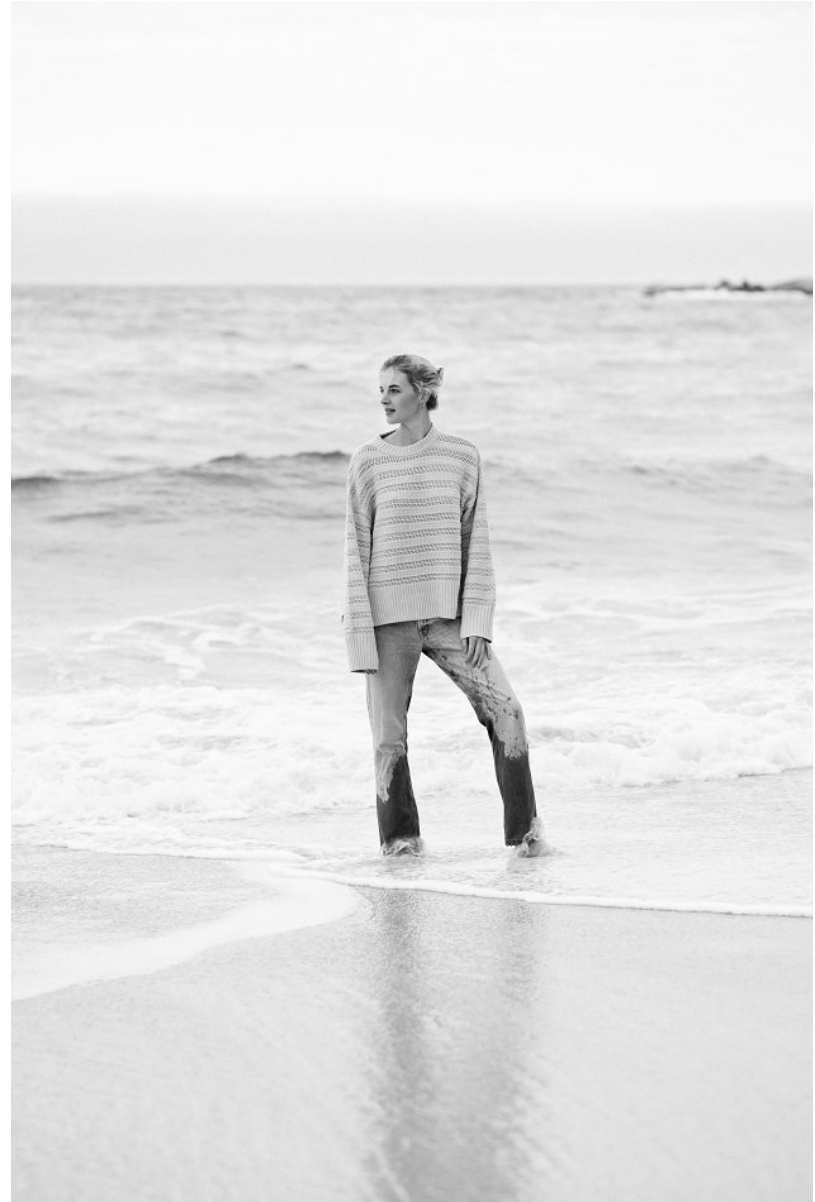


KATHERINE HERBERT

Height: 181cm Bust: 83cm Waist: 66cm Hips: 89cm Shoe: 8 UK Hair: Blonde Eyes: Blue

# BOSS MODELS

JOHANNESBURG



KATHERINE HERBERT

Height: 181cm Bust: 83cm Waist: 66cm Hips: 89cm Shoe: 8 UK Hair: Blonde Eyes: Blue

# BOSS MODELS

JOHANNESBURG



KATHERINE HERBERT

Height: 181cm Bust: 83cm Waist: 66cm Hips: 89cm Shoe: 8 UK Hair: Blonde Eyes: Blue

# BOSS MODELS

JOHANNESBURG



KATHERINE HERBERT

Height: 181cm Bust: 83cm Waist: 66cm Hips: 89cm Shoe: 8 UK Hair: Blonde Eyes: Blue

# BOSS MODELS

JOHANNESBURG



KATHERINE HERBERT

Height: 181cm Bust: 83cm Waist: 66cm Hips: 89cm Shoe: 8 UK Hair: Blonde Eyes: Blue

# BOSS MODELS

JOHANNESBURG



KATHERINE HERBERT

Height: 181cm Bust: 83cm Waist: 66cm Hips: 89cm Shoe: 8 UK Hair: Blonde Eyes: Blue

# BOSS MODELS

JOHANNESBURG



KATHERINE HERBERT

Height: 181cm Bust: 83cm Waist: 66cm Hips: 89cm Shoe: 8 UK Hair: Blonde Eyes: Blue



# BOSS MODELS

JOHANNESBURG



KATHERINE HERBERT

Height: 181cm Bust: 83cm Waist: 66cm Hips: 89cm Shoe: 8 UK Hair: Blonde Eyes: Blue

# BOSS MODELS

JOHANNESBURG



**KATHERINE HERBERT**

Height: 181cm Bust: 83cm Waist: 66cm Hips: 89cm Shoe: 8 UK Hair: Blonde Eyes: Blue