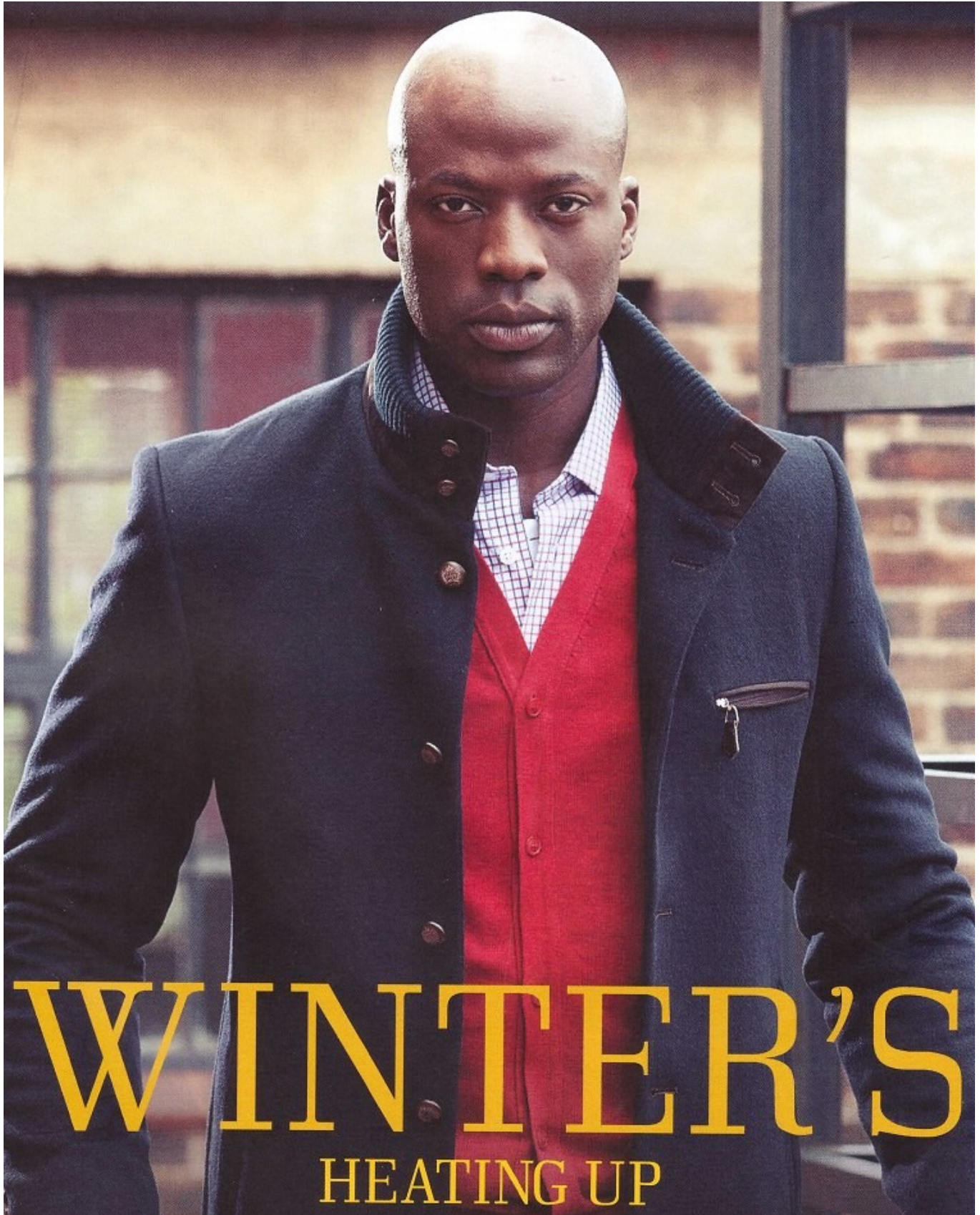


BOSS MODELS

JOHANNESBURG



JC NGANDU

Height: 185cm Chest: 104cm Waist: 90cm Suit: 42 L Shoe: 10 UK Hair: Bald Eyes: Brown

BOSS MODELS

JOHANNESBURG

When buying a white shirt,
always look for a good-
quality, fine yarn which will
stand the test of time.

ON HIM: Black tuxedo with
satin lapel, R5 000, white-
pleated shirt, R450 and black
bowtie, R225, all Carducci,
011 884 8470, www.carducci.co.za. Black lace-up shoes,
R700, Markham, 011 685 1428,
www.markham.co.za. Watch
with black leather strap,
R14 495, Frédérique Constant
@ Picot & Moss, 011 669 0500,
www.picotandmoss.co.za
ON HER: Black and cream
lace dress, R1 500, Zero
Degrees, 011 783-5611,
www.zerodegrees.co.za

JC NGANDU

Height: 185cm Chest: 104cm Waist: 90cm Suit: 42 L Shoe: 10 UK Hair: Bald Eyes: Brown

BOSS MODELS

JOHANNESBURG

RETAIL FILE

HIGHLIGHTS

- Bright Ties
- Stylish Men in Finance
- Sharp White Shirts

ACQUISITION Target

PHOTOGRAPHER: NICK BOULTON / FASHION ASSISTANT: LAUREN THOMAS
MODEL: JC @ HEADS. GROOMING: MARC BOSS @ RED HOT OPS

If you buy one thing this month, make it this pair of *über*-stylish shades,

R1 120, available from Safilo, 011 457 3500, www.safilo.com.

PRODUCED BY PAPAMA MTWISHA

JC NGANDU

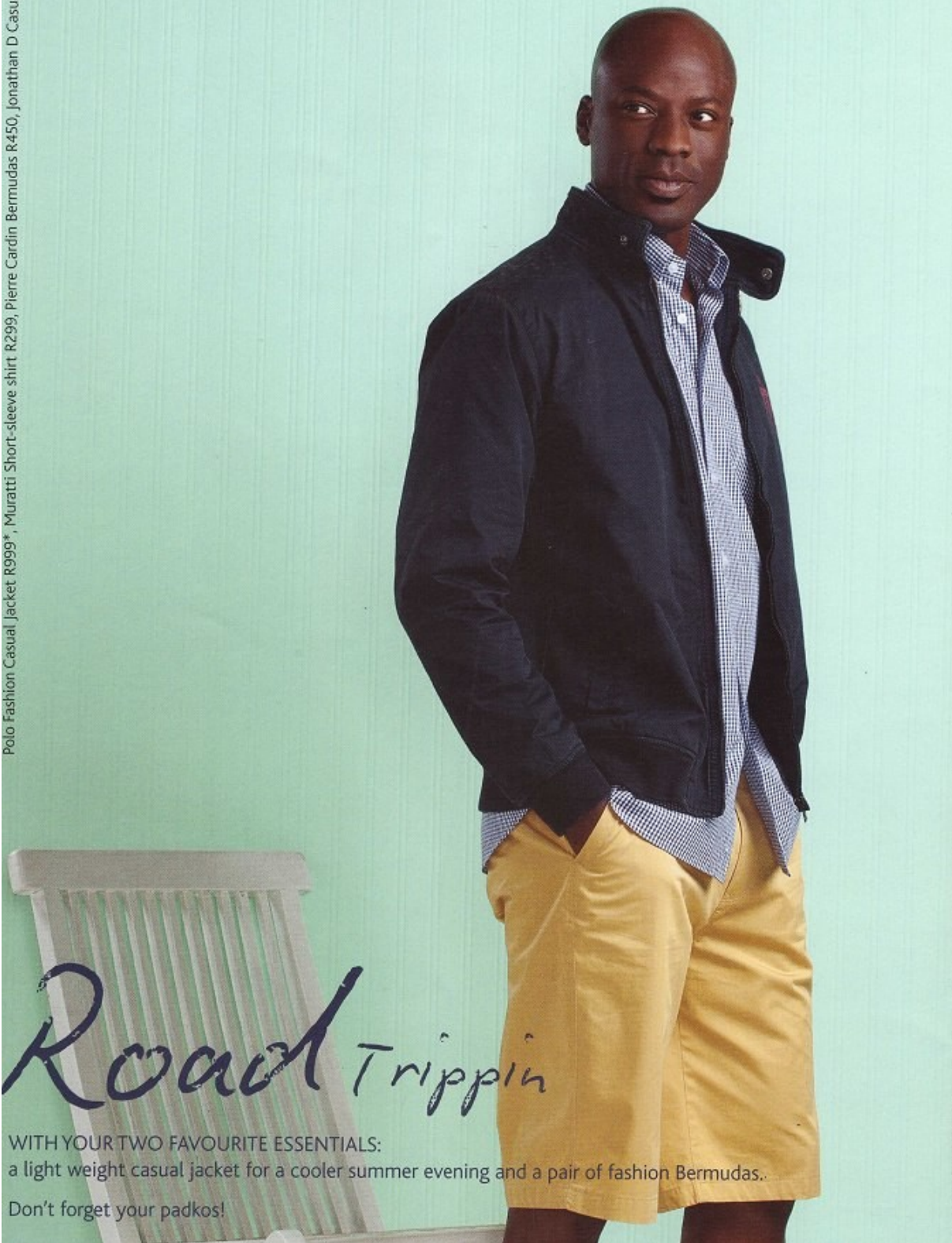
Height: 185cm Chest: 104cm Waist: 90cm Suit: 42 L Shoe: 10 UK Hair: Bald Eyes: Brown

BOSS MODELS

JOHANNESBURG

Polo Fashion Casual Jacket R999*, Muratti Short-sleeve shirt R299, Pierre Cardin Bermudas R450, Jonathan D Casual Shoe R450.

Jonathan D



Road Trippin

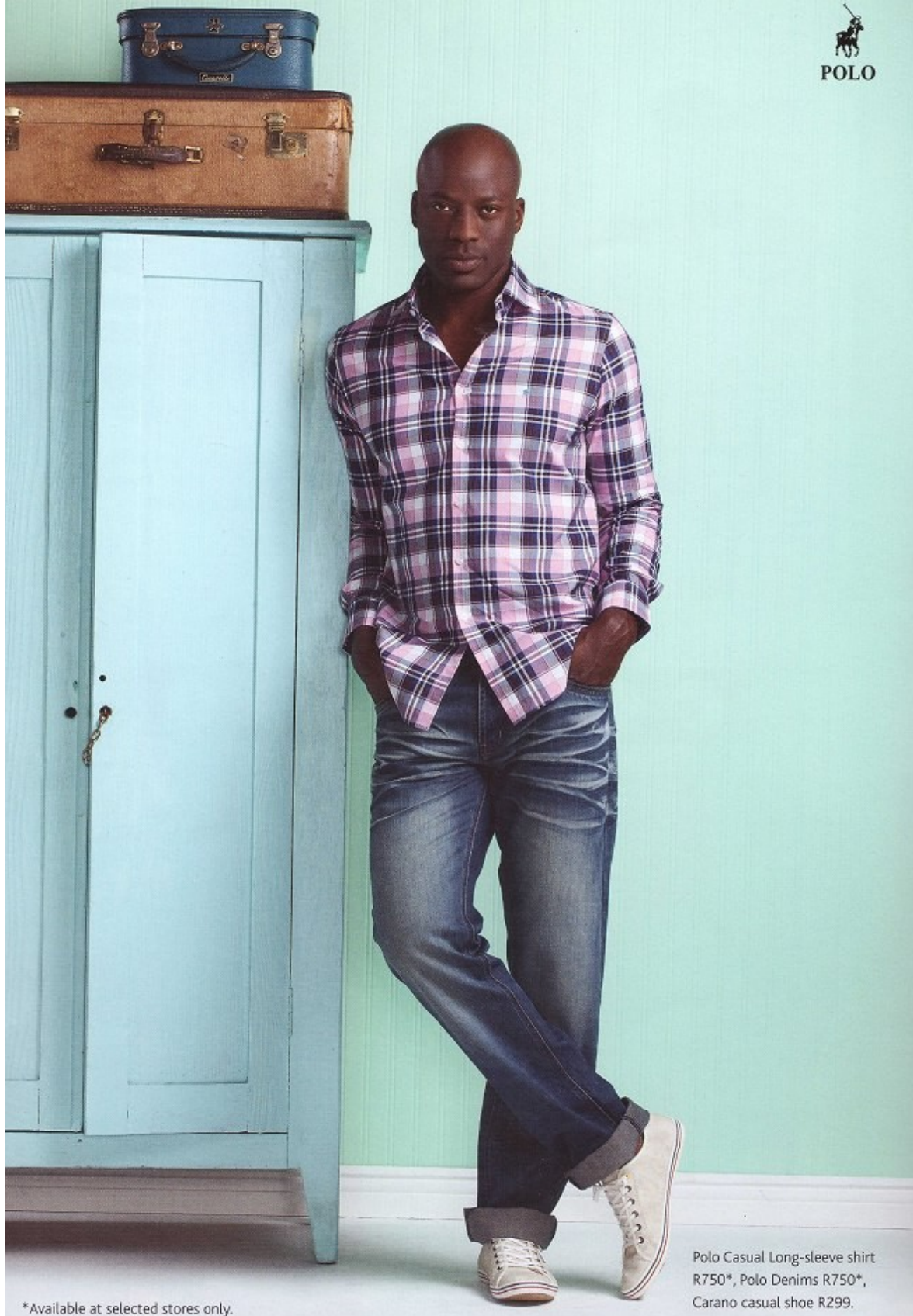
WITH YOUR TWO FAVOURITE ESSENTIALS:
a light weight casual jacket for a cooler summer evening and a pair of fashion Bermudas.
Don't forget your padkos!

JC NGANDU

Height: 185cm Chest: 104cm Waist: 90cm Suit: 42 L Shoe: 10 UK Hair: Bald Eyes: Brown

BOSS MODELS

JOHANNESBURG



*Available at selected stores only.

Polo Casual Long-sleeve shirt
R750*, Polo Denims R750*,
Carano casual shoe R299.

JC NGANDU

Height: 185cm Chest: 104cm Waist: 90cm Suit: 42 L Shoe: 10 UK Hair: Bald Eyes: Brown

BOSS MODELS

JOHANNESBURG



JC NGANDU

Height: 185cm Chest: 104cm Waist: 90cm Suit: 42 L Shoe: 10 UK Hair: Bald Eyes: Brown

BOSS MODELS

JOHANNESBURG

LOOK SHARP > LIVE SMART

Style

She wears: Subject latex boob tube R650, Subject latex leggings R1 500, Lulu Belle studded cuff R55, Aldo patent heels R999 (worn throughout)

He wears: Relay at Markham faux leather jacket R1 799, Guess grey hoodie R799, Hugo Boss jeans R3 250, Burberry at Sunglass Hut sunglasses R2 130, The Lot grey scarf R199, Aldo shoes R999

HIDE & SLEEK

Leather jackets add a touch of panache to your wardrobe

PHOTOGRAPHS BY MARGUERITE OELOFSE

STYLE ADVICE | **GROOMING** | **FITNESS** | **HEALTH**
Hi-tech fabrics | The bald truth | Parkour | No-drinking binge

JC NGANDU

Height: 185cm Chest: 104cm Waist: 90cm Suit: 42 L Shoe: 10 UK Hair: Bald Eyes: Brown

BOSS MODELS

JOHANNESBURG



A STEAMY AFFAIR

Two '50s inspired maidens, and a lead man in fine suits, make an illicit encounter on board the Blue Train simply irresistible. By DUMI GWEBU.

OPULENT EXPEDITION

CLAIRE WEARS: DRESS R1 299, Thula Sindi; **JACKET** R2 195, Carducci Woman; **HEELS** R1 390, Europa Art Shoes; **EARRINGS** R199, NECKLACE R299, both from Ruby In The Dust; **BELT** Jo Borkett, R250; **GLOVES** (price on request), Tiger Of Sweden; **BAG** R1 399, Guess; **SUITCASE** R1 895, Samsonite at Frasers. **JC WEARS:** SUIT R6 000, Vivella at Carducci; **SHIRT** R1 500, **COAT** R3 900, **BOWTIE** R650, all from Carducci; **SHOES** R2 290, Europa Art Shoes; **HANDKERCHIEF**, Stylist's own; **BAG** R1 399, Guess.

JC NGANDU

Height: 185cm Chest: 104cm Waist: 90cm Suit: 42 L Shoe: 10 UK Hair: Bald Eyes: Brown

BOSS MODELS

JOHANNESBURG



✕
Kurt Geiger suit R4 995.
Carducci shirt R1100.
Viyella tie R500. Guess
at S Bacher & Co watch
R1995. Paul Smith
belt R1530

Kurt Geiger

Nicky Eisen, Merchandising Executive

Why should you be wearing a grey suit this season?

The grey suit is the classic day suit. Smart but not formal; casual with suede shoes or loafers; an open collar or elegant for work; with leather lace-ups in either tan or black - think Fred Astaire and Cary Grant.

What should you look for when buying a suit?

Fit is essential. Kurt Geiger is a slim/regular fit, making it comfortable and fashionable, while not skinny, boxy or 'old'. It has Lycra for comfort, which also makes it easy for travel. Crease recovery is very good. It is made from Super 140s wool, which is very fine but also durable. It has superb finish, both internally and externally.

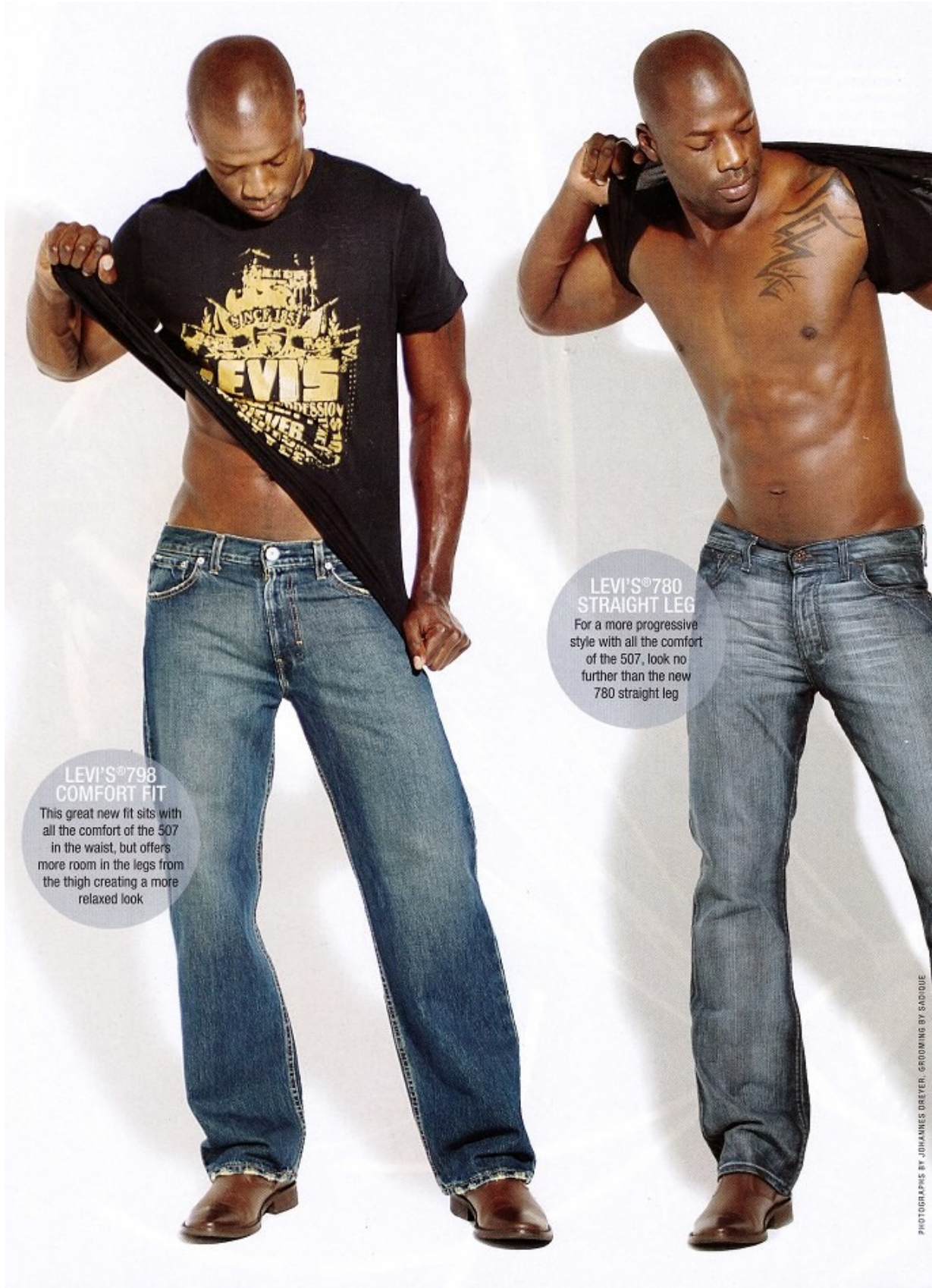
104 GQ.CO.ZA MARCH 2013

JC NGANDU

Height: 185cm Chest: 104cm Waist: 90cm Suit: 42 L Shoe: 10 UK Hair: Bald Eyes: Brown

BOSS MODELS

JOHANNESBURG



**LEVI'S®798
COMFORT FIT**
This great new fit sits with all the comfort of the 507 in the waist, but offers more room in the legs from the thigh creating a more relaxed look

**LEVI'S®780
STRAIGHT LEG**
For a more progressive style with all the comfort of the 507, look no further than the new 780 straight leg

PHOTOGRAPHS BY JOHANNES DREYER, GROOMING BY SADIQUE

JC NGANDU

Height: 185cm Chest: 104cm Waist: 90cm Suit: 42 L Shoe: 10 UK Hair: Bald Eyes: Brown

BOSS MODELS

JOHANNESBURG

GQ PROMOTION

The Levi's®7 Series takes the original to a higher level

SEVEN UP

The 501® has been around the block once or twice, picking up fans as it goes. Anyone who is anyone has owned a pair, not only for the comfortable fit and functionality, but because it's an icon. Over the decades, variations on the theme gave birth to new classics like the 507 and the 516. Now, there is the Levi's®7 Series. It offers what you've come to expect from a pair of Levi's® jeans, but with superior styling and modernity it takes your favourite jeans to another level. Featuring three fits with a wide range of finishes, you'll find a pair for every occasion.

The Levi's® 7 Series is available in all Levi's® Stores, & select Edgars, Markham™ and SportsScene stores from October, 2007.

LEVI'S® 797 BOOTCUT

If it's a bootcut you're after, this updated style is for you. Not as narrow as a shoe cut, but closer to a flair, the 797 is a true bootcut

JC NGANDU

Height: 185cm Chest: 104cm Waist: 90cm Suit: 42 L Shoe: 10 UK Hair: Bald Eyes: Brown

BOSS MODELS

JOHANNESBURG

wante

VOTED BEST MAGA

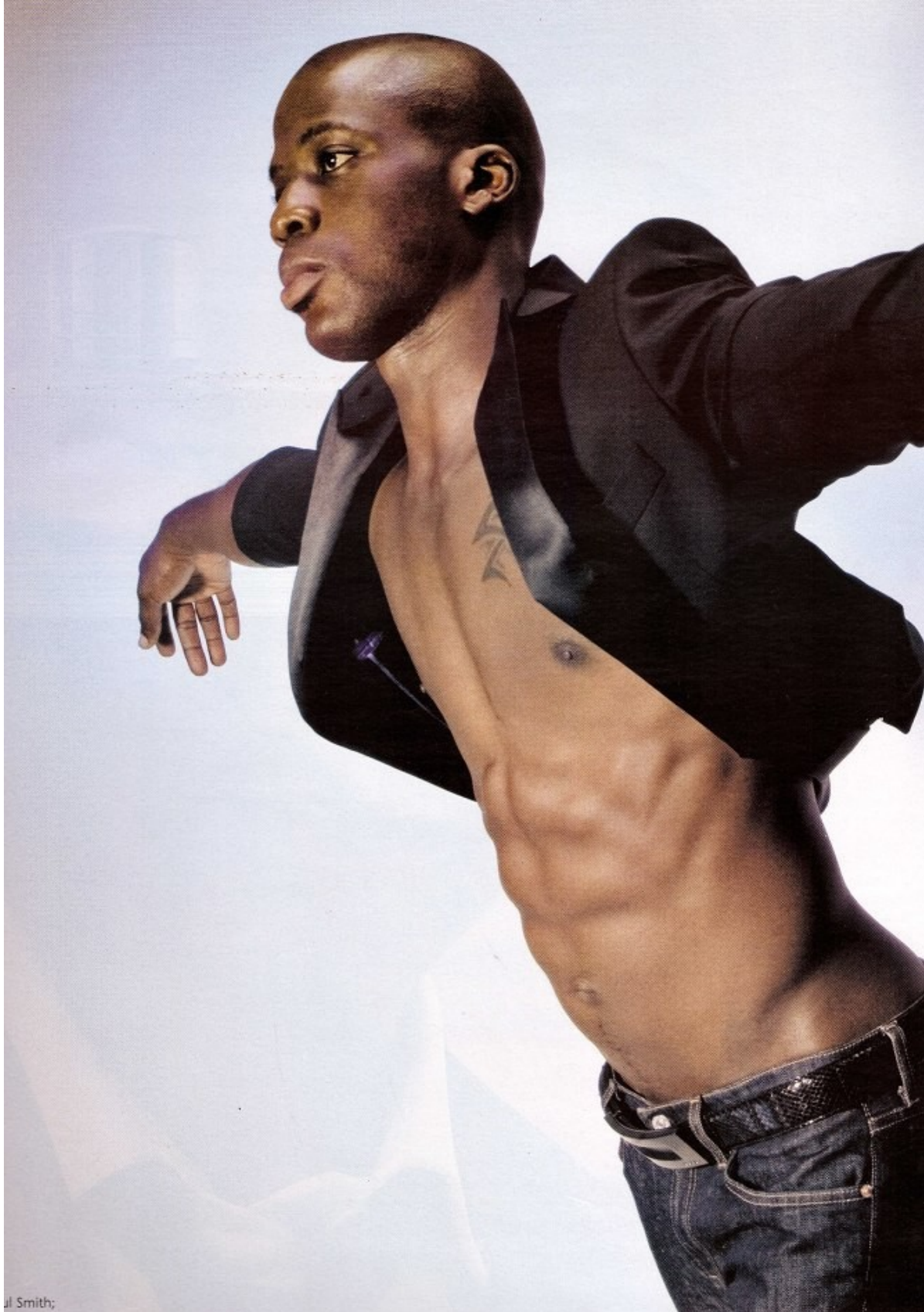


JC NGANDU

Height: 185cm Chest: 104cm Waist: 90cm Suit: 42 L Shoe: 10 UK Hair: Bald Eyes: Brown

BOSS MODELS

JOHANNESBURG

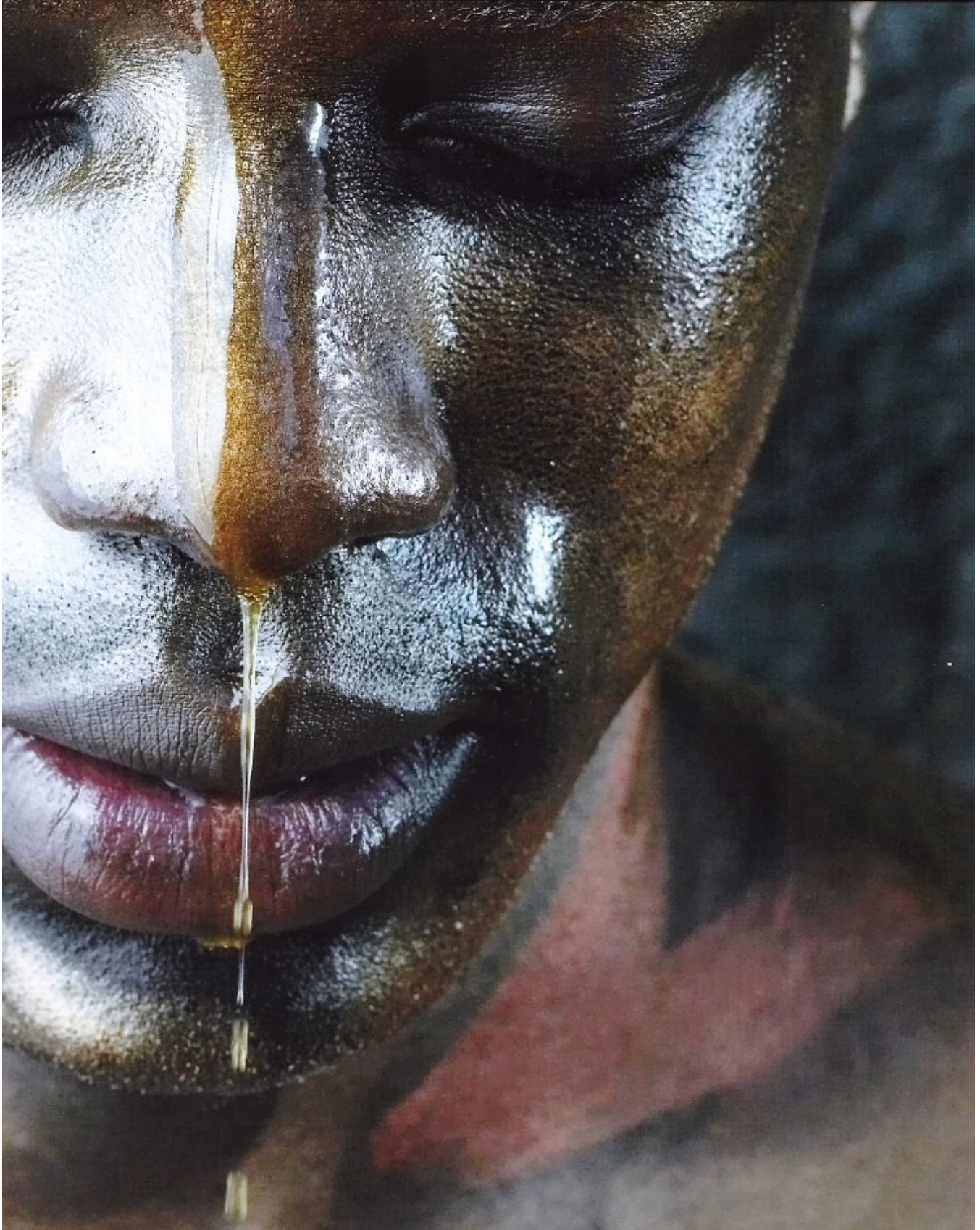


JC NGANDU

Height: 185cm Chest: 104cm Waist: 90cm Suit: 42 L Shoe: 10 UK Hair: Bald Eyes: Brown

BOSS MODELS

JOHANNESBURG

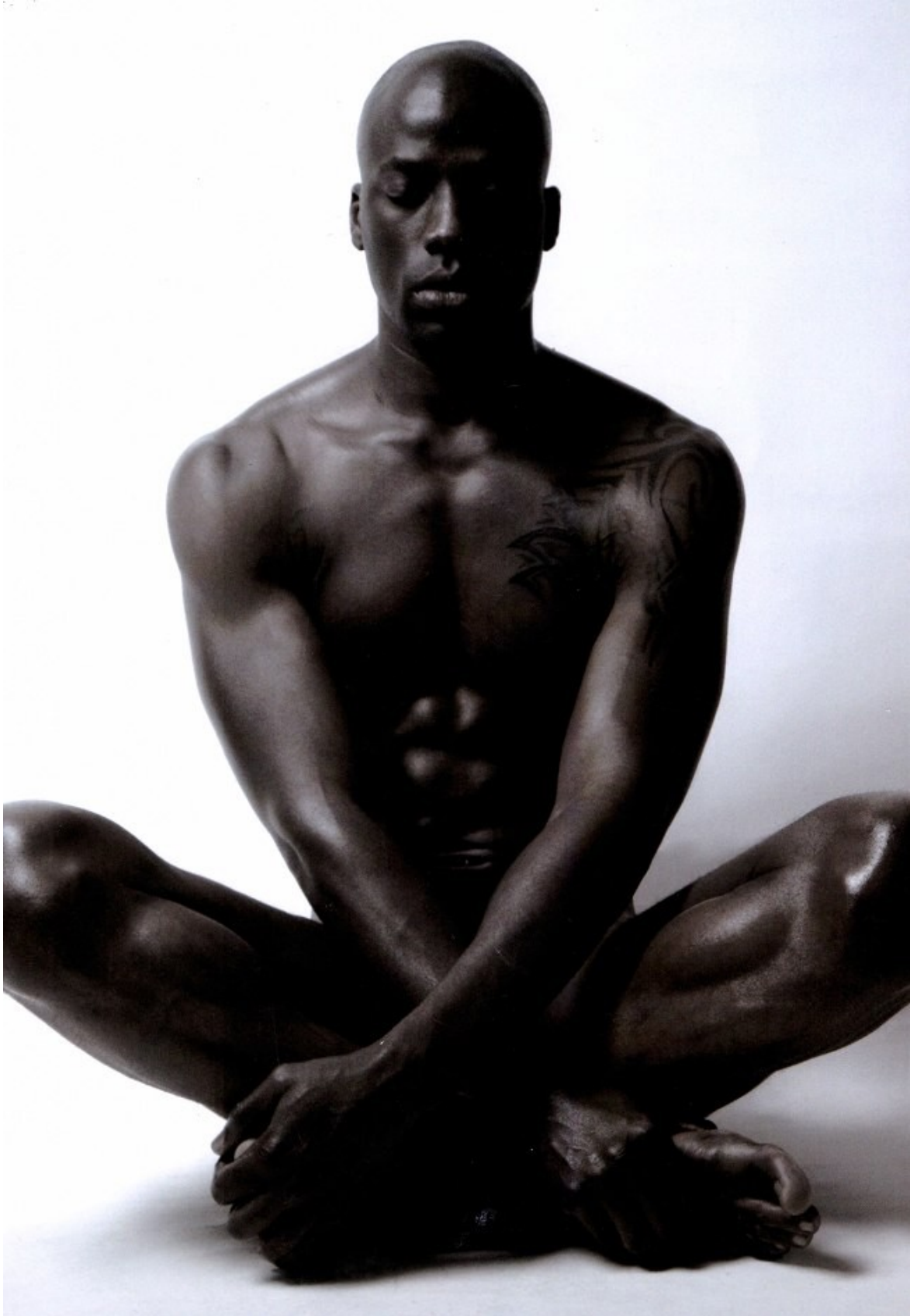


JC NGANDU

Height: 185cm Chest: 104cm Waist: 90cm Suit: 42 L Shoe: 10 UK Hair: Bald Eyes: Brown

BOSS MODELS

JOHANNESBURG



JC NGANDU

Height: 185cm Chest: 104cm Waist: 90cm Suit: 42 L Shoe: 10 UK Hair: Bald Eyes: Brown

BOSS MODELS

JOHANNESBURG

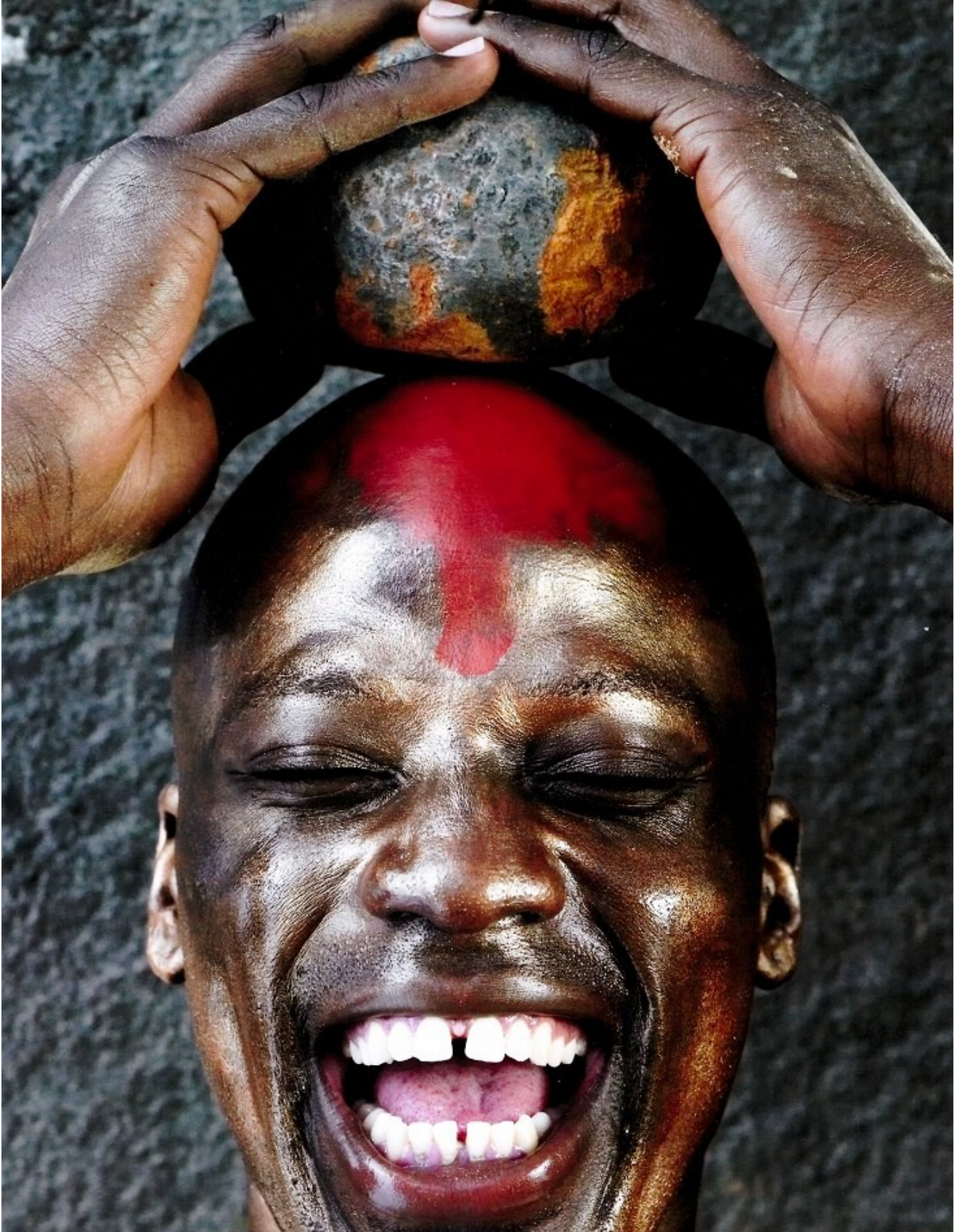


JC NGANDU

Height: 185cm Chest: 104cm Waist: 90cm Suit: 42 L Shoe: 10 UK Hair: Bald Eyes: Brown

BOSS MODELS

JOHANNESBURG



JC NGANDU

Height: 185cm Chest: 104cm Waist: 90cm Suit: 42 L Shoe: 10 UK Hair: Bald Eyes: Brown

BOSS MODELS

JOHANNESBURG



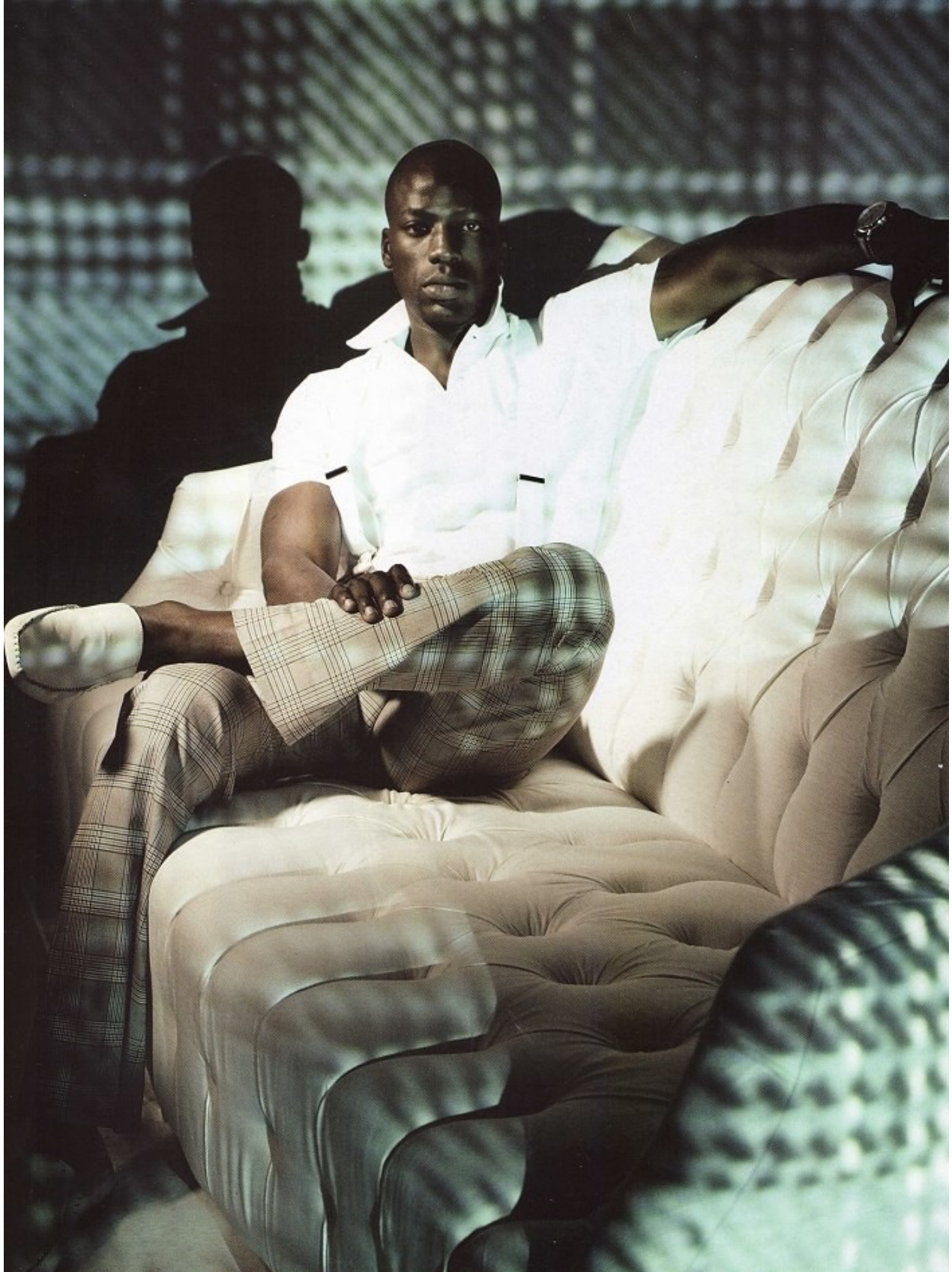
FASHION: ARTHUR MALAN FASHION ASSISTANT: MELISSA MAXTED GROOMING: AMANDA LIEBENTHAL (GLAMOUR MECHANICS)

JC NGANDU

Height: 185cm Chest: 104cm Waist: 90cm Suit: 42 L Shoe: 10 UK Hair: Bald Eyes: Brown

BOSS MODELS

JOHANNESBURG



JC NGANDU

Height: 185cm Chest: 104cm Waist: 90cm Suit: 42 L Shoe: 10 UK Hair: Bald Eyes: Brown

BOSS MODELS

JOHANNESBURG



THIS PAGE: Soviet white T-shirt, R125, Port at YDE brown and yellow checked pants, R280, Robert Daniel maroon braces, R200, Freeway at Europa beige loafers, R900, Pulsar at Just Time white dial with brown croc skin leather strap, R700.

OPPOSITE: Vryella at House of Monatic black and orange checked jacket, R3 000, Truworths Man white trousers, R270, Port at YDE white v-neck low cut jersey, R320, Freeway at Europa dark blue loafers, R900, Robot white perforated belt, R440, Calvin Klein at Swiss Precision silver and white square dial with black leather strap, R3 000.

JC NGANDU

Height: 185cm Chest: 104cm Waist: 90cm Suit: 42 L Shoe: 10 UK Hair: Bald Eyes: Brown

BOSS MODELS

JOHANNESBURG



JC NGANDU

Height: 185cm Chest: 104cm Waist: 90cm Suit: 42 L Shoe: 10 UK Hair: Bald Eyes: Brown

BOSS MODELS

JOHANNESBURG

Look sharp | Live smart

GQ Style

GREY MATTER

Fashion HEADED TO THE OFFICE? LIGHTEN UP	Advice THE DYNAMIC DENIM JACKET	Groomed THE NEW FACE OF BUSINESS	Body SLEEP HARDER, LONGER, BETTER
p100	p108	p115	p124

➔ Photographer **Brett Rubin**. Creative Fashion Director **Arthur Malan-Murison**. Stylist **Nicole van Heerden**

MARCH 2013 **GQ.CO.ZA** 99

JC NGANDU

Height: 185cm Chest: 104cm Waist: 90cm Suit: 42 L Shoe: 10 UK Hair: Bald Eyes: Brown

BOSS MODELS

JOHANNESBURG



The terms “white-collar crime” and “white-collar worker” stem from the time when almost all male office workers had to wear white shirts.

ON HIM: Black suit, R12 500, Lagerfeld @ 69 Belmont, 011 883 1476, www.69belmont.com. White shirt, R1 200 and white breast pocket square, R300, both HTK Homme, 011 784 2374. Black leather belt, R4 550, Louis Vuitton, 011 784 9854, www.louisvuitton.com. Striped black and white tie, R395, Carducci, 011 884 8470, www.carducci.co.za
ON HER: Black and white pleated dress, R1 899, Zero Degrees, 011 783 5611, www.zerodegrees.co.za

JC NGANDU

Height: 185cm Chest: 104cm Waist: 90cm Suit: 42 L Shoe: 10 UK Hair: Bald Eyes: Brown

BOSS MODELS

JOHANNESBURG



FROM LEFT: Wes wears **Tiger of Sweden** suit R10 000, **Kurt Geiger** shirt R995, **Louis Vuitton** tie R1 950, belt R3 350, **Polo** pocket square R200, **Ozlan** at Zando.co.za shoes R400

JC wears **Robert Daniel** suit R3 200, **Kurt Geiger** shirt R995, **Carducci** tie R335, **Polo** pocket square R200, **Boss** at S Bacher & Co watch R3 750, **Louis Vuitton** belt R4 750, **Aldo** shoes R1 300

FROM LEFT:
Wes wears **Tiger of Sweden** double-breasted suit R10 500, **Kurt Geiger** shirt R995, **Louis Vuitton** tie R1 950, **Polo** pocket square R200, **Ozlan** at Zando.co.za shoes R400

JC wears **Robert Daniel** suit R3 200, **Kurt Geiger** shirt R995, **Carducci** tie R335, **Polo** pocket square R200, **Boss** at S Bacher & Co watch R3 750, **Louis Vuitton** belt R4 750, **Aldo** shoes R1 300

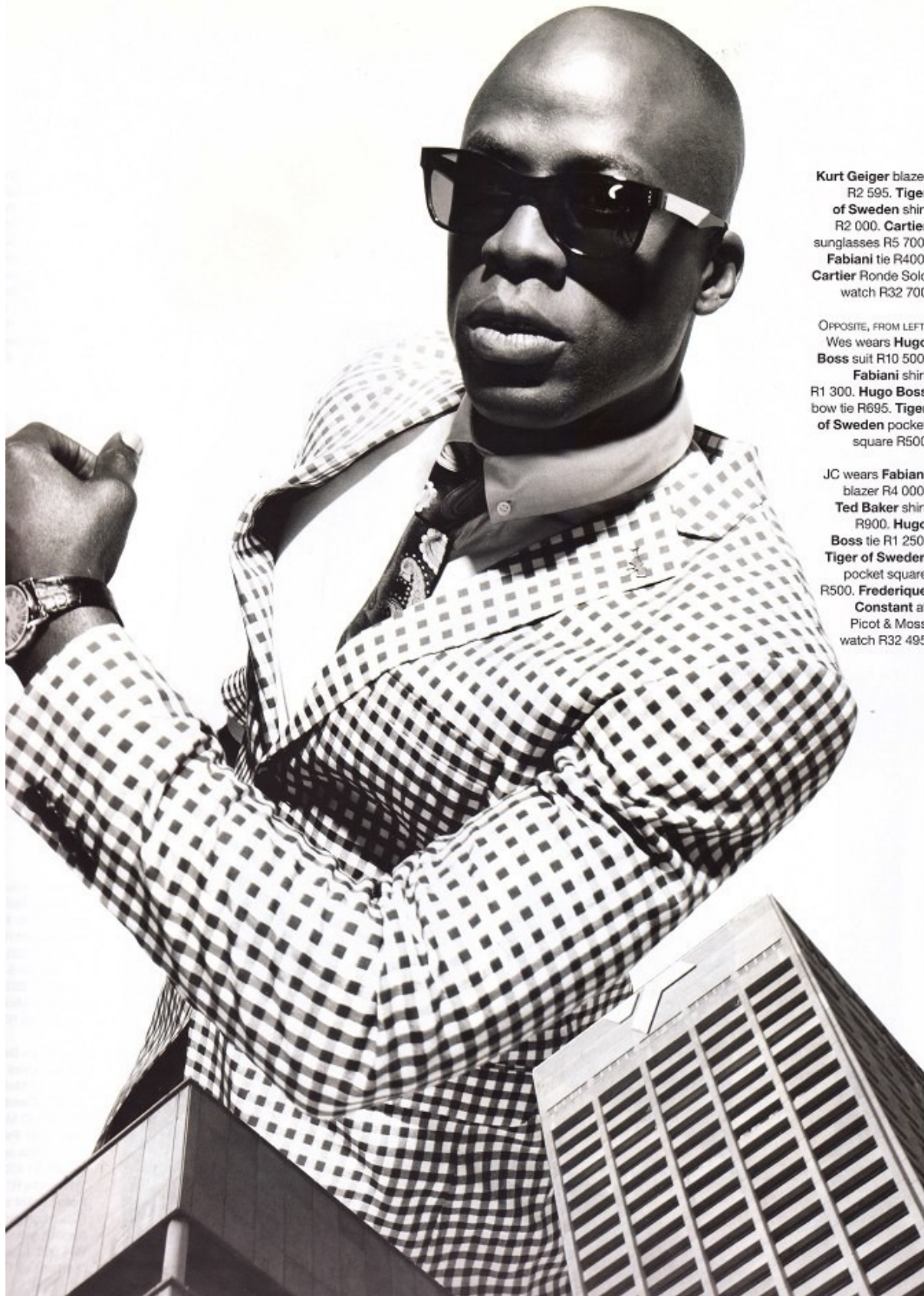
CREATIVE DIRECTION
ARTHUR MALAN-
MURISON
PRODUCTION JENNA
BRUWER
GROOMING KELLY
JEAN GILBERT
MODELS JC AT HEADS
MODELS, WES AT ICE
PHOTOGRAPHER'S
ASSISTANT SHAUN
SAMUELS
INTERN JODI-LEE
ASHTON

JC NGANDU

Height: 185cm Chest: 104cm Waist: 90cm Suit: 42 L Shoe: 10 UK Hair: Bald Eyes: Brown

BOSS MODELS

JOHANNESBURG



Kurt Geiger blazer
R2 595. **Tiger
of Sweden** shirt
R2 000. **Cartier**
sunglasses R5 700
Fabiani tie R400
Cartier Ronde Solo
watch R32 700

OPPOSITE, FROM LEFT:
Wes wears **Hugo
Boss** suit R10 500.
Fabiani shirt
R1 300. **Hugo Boss**
bow tie R695. **Tiger
of Sweden** pocket
square R500

JC wears **Fabiani**
blazer R4 000.
Ted Baker shirt
R900. **Hugo
Boss** tie R1 250.
Tiger of Sweden
pocket square
R500. **Frederique
Constant** at
Picot & Moss
watch R32 495

JC NGANDU

Height: 185cm Chest: 104cm Waist: 90cm Suit: 42 L Shoe: 10 UK Hair: Bald Eyes: Brown

BOSS MODELS

JOHANNESBURG

Cardin suit
Branaccio C
Spaghetti Mafia
shirt R120. **Diesel**
tie R500.
Sweden
square R500.
Alessandrini
Spaghetti Mafia
shirt R120. **Watson**
shoes R390.
www.jc.co.za
900



Brookesfield a
Brand ID Menswear
suit R2 700
Branaccio C a
Spaghetti Mafia
shirt R120. **Pol**
tie R300. **Ebel** a
Architects of Time
watch R28 600
Daniele Alessandrini
at Spaghetti Mafia
belt R390. **Ald**
shoes R1 000

JC NGANDU

Height: 185cm Chest: 104cm Waist: 90cm Suit: 42 L Shoe: 10 UK Hair: Bald Eyes: Brown

BOSS MODELS

JOHANNESBURG

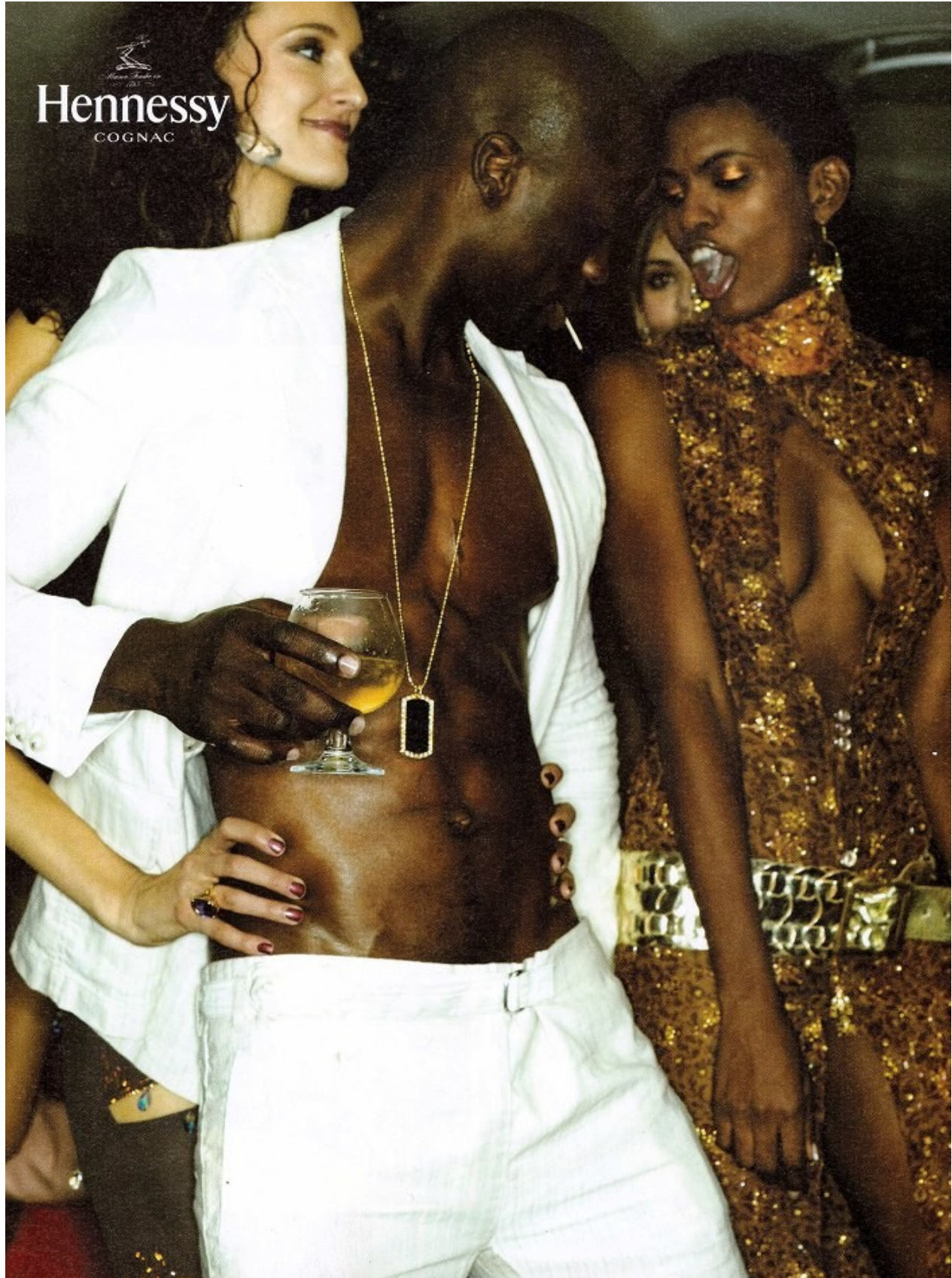


JC NGANDU

Height: 185cm Chest: 104cm Waist: 90cm Suit: 42 L Shoe: 10 UK Hair: Bald Eyes: Brown

BOSS MODELS

JOHANNESBURG

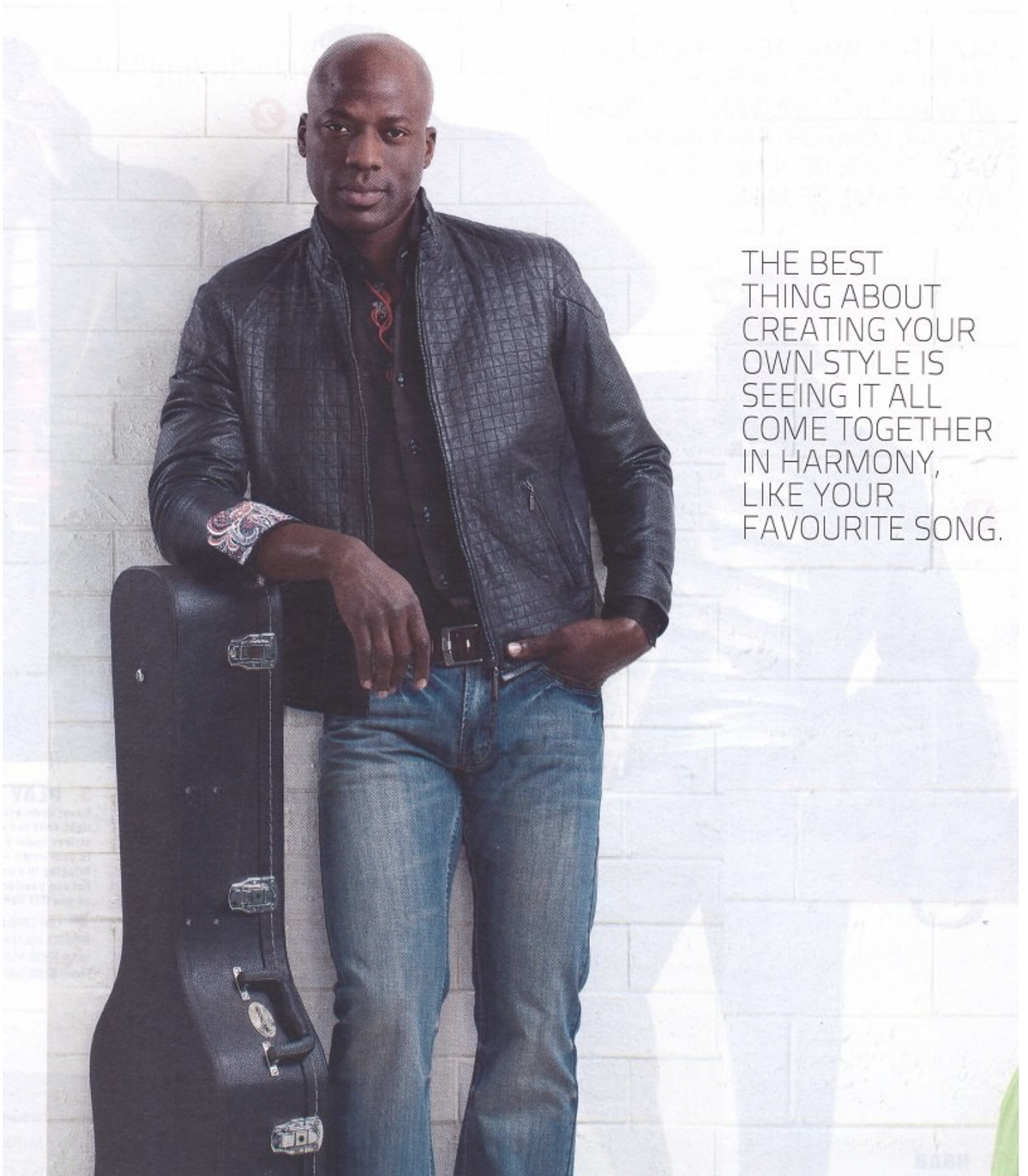


JC NGANDU

Height: 185cm Chest: 104cm Waist: 90cm Suit: 42 L Shoe: 10 UK Hair: Bald Eyes: Brown

BOSS MODELS

JOHANNESBURG



THE BEST
THING ABOUT
CREATING YOUR
OWN STYLE IS
SEEING IT ALL
COME TOGETHER
IN HARMONY,
LIKE YOUR
FAVOURITE SONG.

JC NGANDU

Height: 185cm Chest: 104cm Waist: 90cm Suit: 42 L Shoe: 10 UK Hair: Bald Eyes: Brown