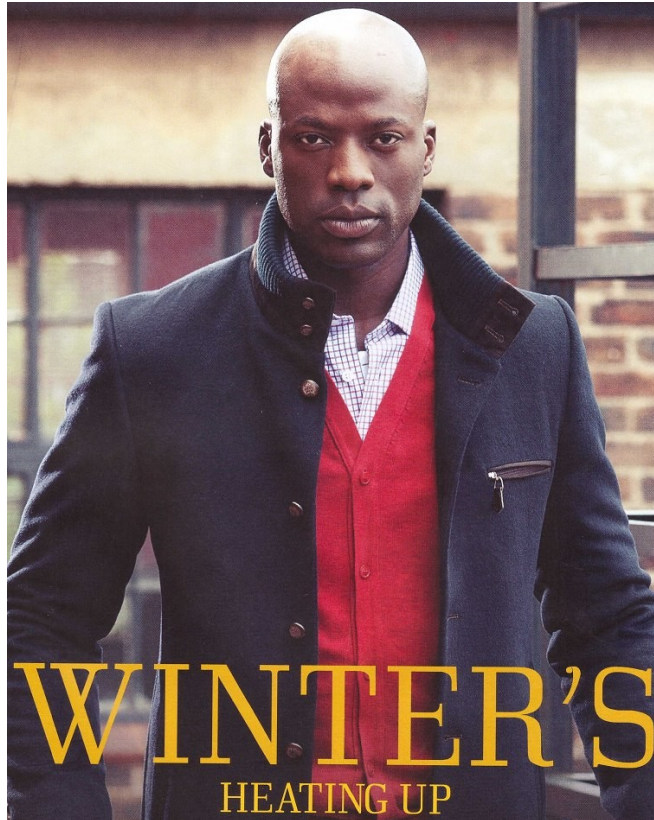


BOSS MODELS

JOHANNESBURG



RETAIL FILE

- HIGHLIGHTS**
- Bright Ties
 - Stylish Men in Finance
 - Sharp White Shirts

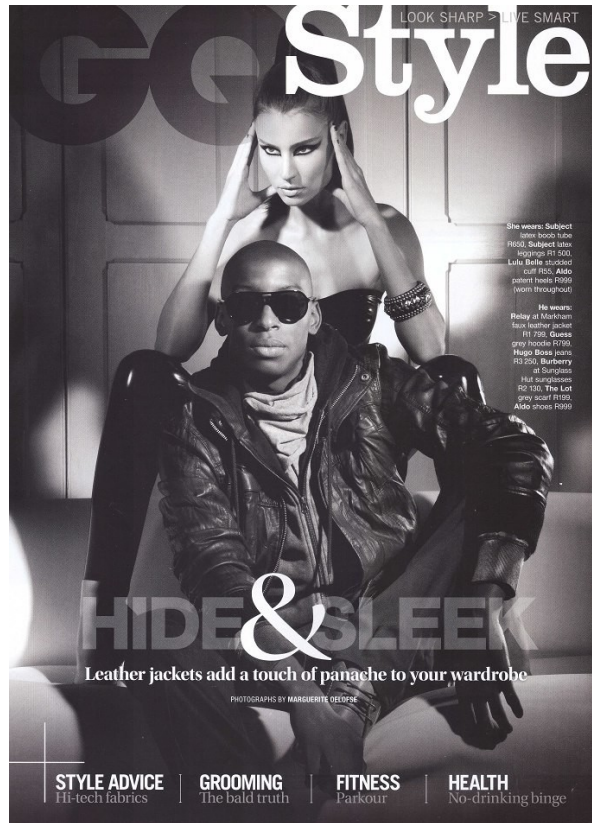
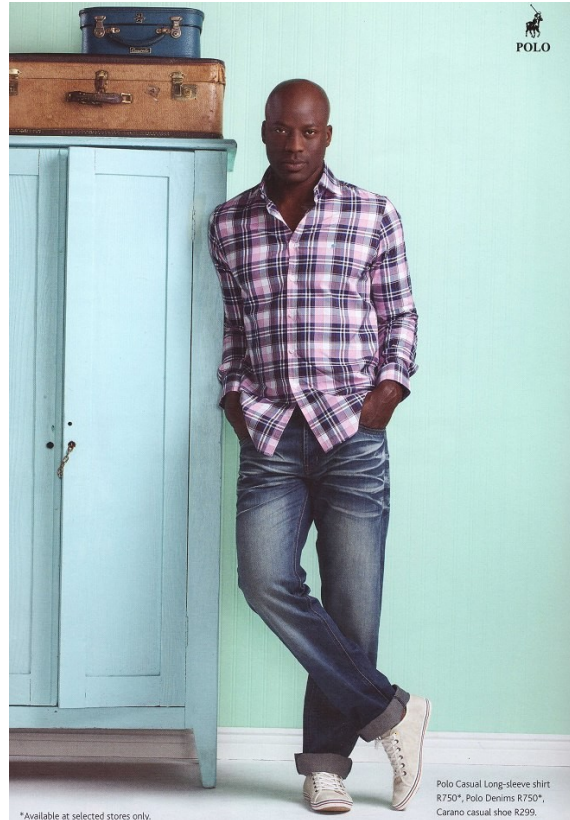


JC NGANDU

Height: 185cm Chest: 104cm Waist: 90cm Suit: 42 L Shoe: 10 UK Hair: Bald Eyes: Brown

BOSS MODELS

JOHANNESBURG



JC NGANDU

Height: 185cm Chest: 104cm Waist: 90cm Suit: 42 L Shoe: 10 UK Hair: Bald Eyes: Brown

BOSS MODELS

JOHANNESBURG

A STEAMY AFFAIR

Two '50s inspired maidens, and a lead man in fine suits, make an illicit encounter on board the Blue Train simply irresistible. By DUMI GWEBU.

OPULENT EXPEDITION
 CLAIRE WEARS: DRESS R1 299, Thula Shoe; JACKETS R2 199, Carducci; Woman; HEELS R1 390, Europe Art Shoes; EARRINGS R199; NECKLACE R219, both from Ruby In The Dust; BELT Jo Bolkett; R250; GLOVES (price on request); Tiger Or Sweden; BAG R1 399, Guise; SUITCASE R1 899; Smartphone at Frasers; JEWELRY: SUIT R1 000; Vivella at Carducci; SHIRT R1 550; COAT R1 950; BOWTIE R2 290, Europe Art Shoes; HANDBAG: Guise's own; BAG R1 399, Guise.

Kurt Geiger suit R1 995; Carducci shirt R1 100; Vivella tie R1500; Guise at Simons & Co. Women; R1 995; Paul Smith belt R1850

Kurt Geiger
 Nicky Eisen, Merchandising Executive

Why should you be wearing a grey suit this season?
 The grey suit is the classic day suit. Smart but not formal; casual with suede shoes or loafers; an open collar or elegant for work, with leather face-ups in either tan or black – think Fred Astaire and Cary Grant.

What should you look for when buying a suit?
 Fit is essential. Kurt Geiger is a slim/regular fit, making it comfortable and fashionable, while not skinny, boy or 'old'. It has lycra for comfort, which also makes it easy for travel. Crease recovery is very good. It is made from Super 140s wool, which is very fine but also durable. It has superb finish, both internally and externally.

104 GO.CO.ZA MARCH 2013

LEVI'S® 788 COMFORT FIT
 This great new fit sits with all the comfort of the 507 in the waist, but offers more room in the legs from the thigh creating a more relaxed look.

LEVI'S® 780 STRAIGHT LEG
 For a more progressive style with all the comfort of the 507, look no further than the new 780 straight leg.

PHOTOGRAPH BY JOHANNES BREYTEL, GROOMING BY LINDSEY

GO PROMOTION

The Levi's® 7 Series takes the original to a higher level

SEVEN UP

The 501® has been around the block once or twice, picking up fans as it goes. Anyone who is anyone has owned a pair, not only for the comfortable fit and functionality, but because it's an icon. Over the decades, variations on the theme gave birth to new classics like the 507 and the 516. Now, there is the Levi's® 7 Series. It offers what you've come to expect from a pair of Levi's® jeans, but with superior styling and modernity. It takes your favourite jeans to another level. Featuring three fits with a wide range of finishes, you'll find a pair for every occasion.

The Levi's® 7 Series is available in all Levi's® stores, United Colors of Manchester™ and Sportscenes stores from October, 2007.

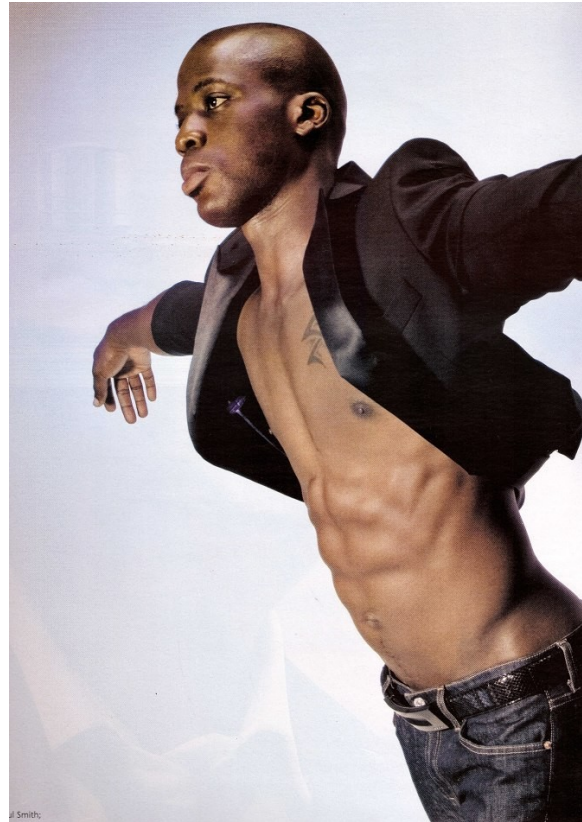
LEVI'S® 797 BOOTCUT
 If it's a bootcut you're after, this updated style is for you. Not as narrow as a shoe cut, but closer to a flare, the 797 is a true bootcut.

JC NGANDU

Height: 185cm Chest: 104cm Waist: 90cm Suit: 42 L Shoe: 10 UK Hair: Bald Eyes: Brown

BOSS MODELS

JOHANNESBURG

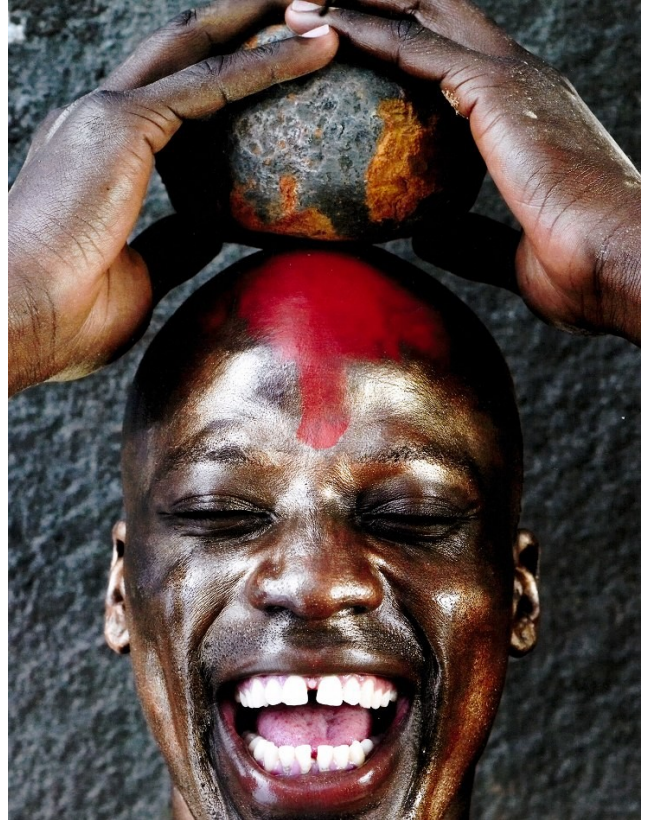


JC NGANDU

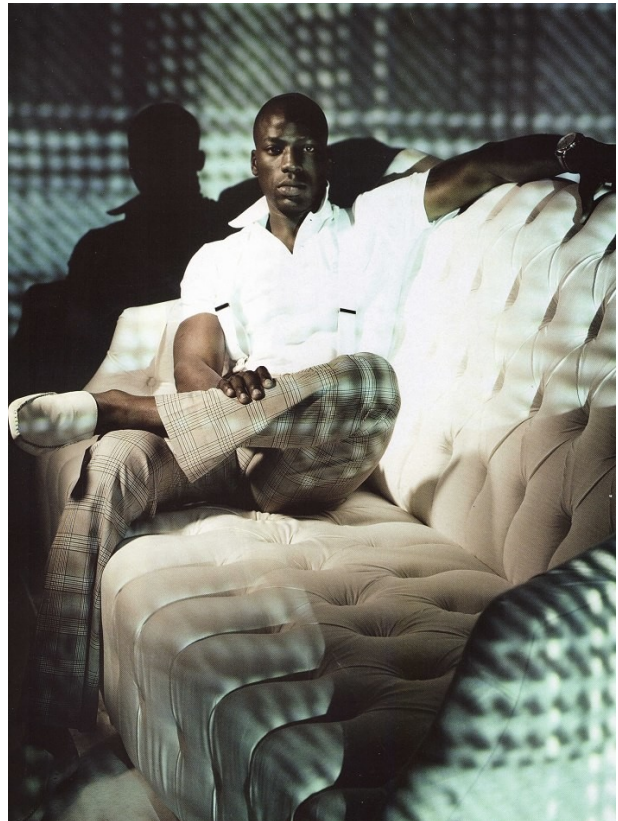
Height: 185cm Chest: 104cm Waist: 90cm Suit: 42 L Shoe: 10 UK Hair: Bald Eyes: Brown

BOSS MODELS

JOHANNESBURG



FASHION: ARTHUR MALAB FASHION ASSISTANT: MELISSA MAXTED GROOMING: AMANDA LIEBENTHAL (GLAMOUR MECHANICS)



JC NGANDU

Height: 185cm Chest: 104cm Waist: 90cm Suit: 42 L Shoe: 10 UK Hair: Bald Eyes: Brown

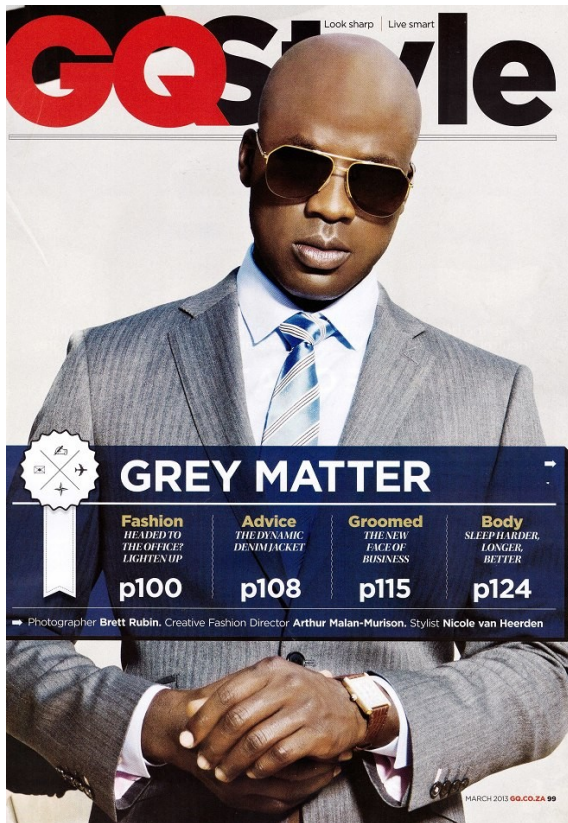
BOSS MODELS

JOHANNESBURG



THIS PAGE: Opposite white T-shirt, R120. Pant at YDE brown and yellow checked jeans, R200. Robot David Morgan tracks, R500. Precious 28 Europa baguette, R600. Palace at Bell Time white dial with brown croc skin leather strap, R500.

OPPOSITE: Wyllie at House of Martin black and orange checked jacket, R1.000. Truworths Man white trousers, R200. Pant at YDE white v-neck low cut jersey, R500. Precious at Europa one line leather, R600. Robot white perforated belt, R400. Golden Block at Swiss Precision silver and white square dial with black leather strap, R300.



Look sharp | Live smart

GQ Style

GREY MATTER

Fashion HE ADDED TO THE OFFICE LIGHTEN UP p100	Advice THE DYNAMIC DENIM BUCKET p108	Groomed THE NEW FACE OF BUSINESS p115	Body SLEEPHARDER. LONGER. BETTER. p124
--	--	---	--

Photographer Brett Rubin, Creative Fashion Director Arthur Malan-Murison, Stylist Nicole van Heerden



The terms "white-collar crime" and "white-collar worker" stem from the time when almost all male office workers had to wear white shirts.

ON HIM: Black suit, R12 500, Lagerfeld - 69 Belmont, 011 883 1476, www.69belmont.com. White shirt, R1 200, Agi white breast pocket square, R 500, both HTK Homme, 011 784 2374. Black leather belt, R4 550, Louis Vuitton, 011 728 9854, www.louisvuitton.com. Striped black and white tie, R395, Carucci, 011 884 8470, www.carucci.com

ON HER: Black and white printed dress, R1 899, Zero Degrees, 011 783 8011, www.zerodegrees.co.za

JC NGANDU

Height: 185cm Chest: 104cm Waist: 90cm Suit: 42 L Shoe: 10 UK Hair: Bald Eyes: Brown

BOSS MODELS

JOHANNESBURG



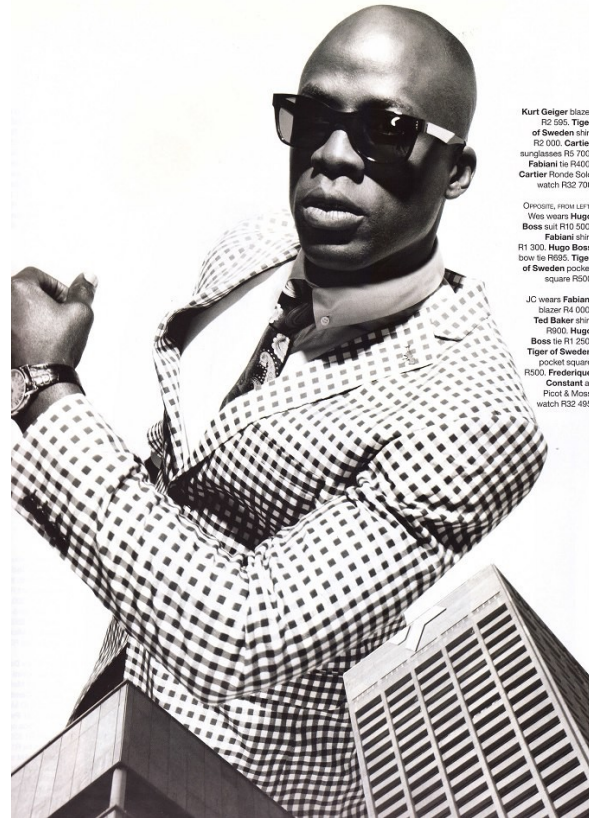
FROM LEFT:
Tiger of Sweden
suit R10 500,
Louis sunglasses
Polo tie
square
watch at
R50 000

Tiger of Sweden
suit R10 500,
Sweden shirt
Emporio
Armani
sunglasses
Louis Vuitton
Polo
square
watch R200,
at Swatch
R27 300

FROM LEFT: Wes wears
Tiger of Sweden suit
R10 000, Kurt Geiger
shirt R995, Louis
Vuitton tie R1 950,
belt R3 350, Polo
pocket square R200,
Osiano at Zanco,
co.za shoes R400

JC wears Robert
Daniel suit R3 200,
Kurt Geiger shirt
R995, Caribucci tie
R335, Polo pocket
square R200, Boss at
S Bacher & Co watch
R3 750, Louis Vuitton
belt R4 750, Aldo
shoes R1 300

CREATIVE DIRECTION
ARTHUR MALKIN
MURISON
PRODUCTION: SIRVA
BRUNER
GROOMING: KELLY
JEAN-OLIVIER
MODELS: JC AT HEADS
MODELS, WES AT J2E
PHOTOGRAPHER'S
ASSISTANT: SHAWN
SAMUELS
INTERVIEW: JOCK-LEE
ASHTON



Kurt Geiger blazer
R2 595, Tiger
of Sweden shirt
R2 000, Cartier
sunglasses R5 700
Fabiani tie R400,
Cartier Floride Solic
watch R32 700

ONPOSITE, FROM LEFT:
Wes wears Hugo
Boss suit R10 500,
Fabiani shirt
R1 300, Hugo Boss
bow tie R995, Tiger
of Sweden pocket
square R500

JC wears Fabiani
blazer R4 000,
Ted Baker shirt
R900, Hugo
Boss tie R1 250,
Tiger of Sweden
pocket square
R500, Frederique
Constant at
Picot & Moss
watch R32 495



Jardin suit
Branaccio C
tutti Maffia
120, Diesel
on Optics
James R2 050,
tie R250,
Sweden
square R300,
Alessandrini
tutti Maffia
5, Watson
J.co.za
900

Brookesfield a
Brand ID Menswear
suit R2 700
Branaccio C a
Spaghetti Maffia
shirt R1 120, Polo
tie R300, Ebel a
Architects of Time
watch R28 600,
Daniele Alessandrini
at Spaghetti Maffia
belt R390, Aldo
shoes R1 000

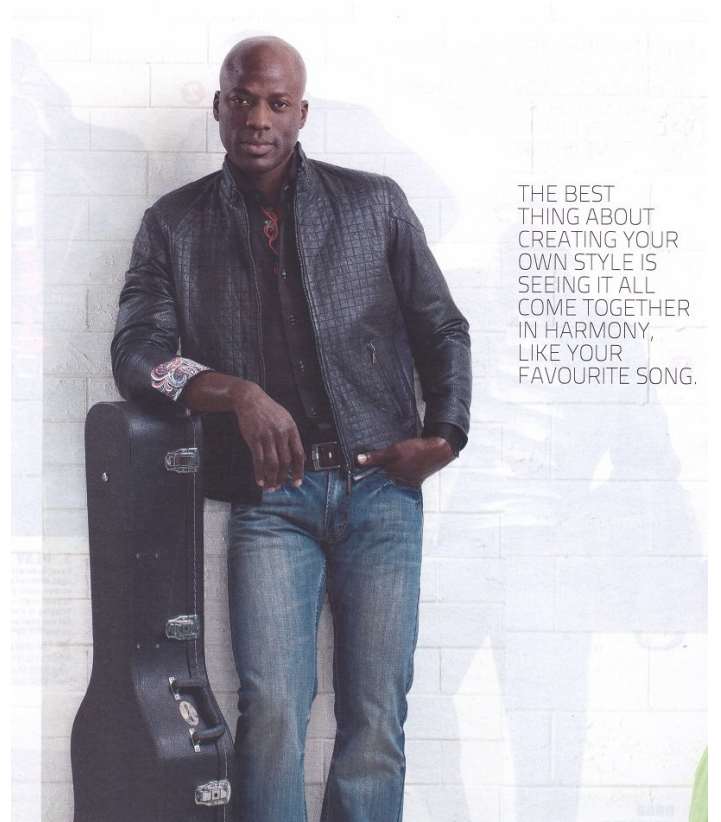
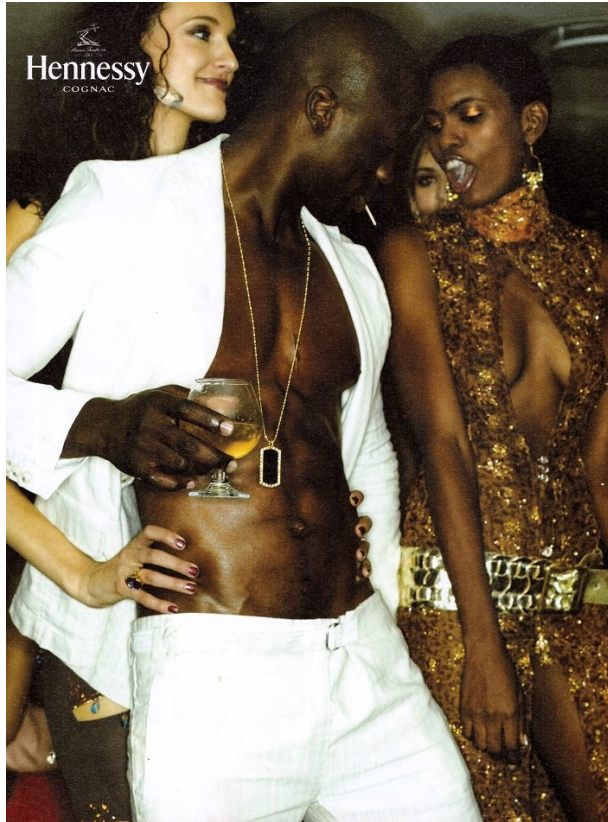


JC NGANDU

Height: 185cm Chest: 104cm Waist: 90cm Suit: 42 L Shoe: 10 UK Hair: Bald Eyes: Brown

BOSS MODELS

JOHANNESBURG



JC NGANDU

Height: 185cm Chest: 104cm Waist: 90cm Suit: 42 L Shoe: 10 UK Hair: Bald Eyes: Brown