

BOSS MODELS

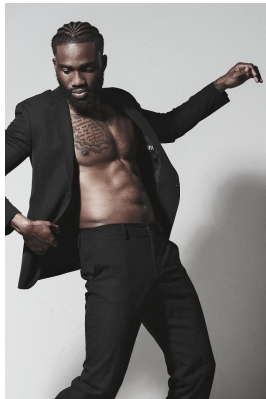
JOHANNESBURG



STYLE



LOOKS LIKE BOSS MODELS
WANT TO BE LIKE YOU? WE'VE GOT YOU COVERED.
LIFE IS IN THE DETAILS. BOSS MODELS ARE THE ONLY
ONE WHO KNOWS HOW TO PUT TOGETHER THE PERFECT
LOOK. FROM THE T-SHIRT AND JEANS TO THE SUIT AND
DRESS, BOSS MODELS KNOW HOW TO PUT TOGETHER
THE PERFECT LOOK. FROM THE T-SHIRT AND JEANS TO
THE SUIT AND DRESS, BOSS MODELS KNOW HOW TO
PUT TOGETHER THE PERFECT LOOK. FROM THE T-SHIRT
AND JEANS TO THE SUIT AND DRESS, BOSS MODELS
KNOW HOW TO PUT TOGETHER THE PERFECT LOOK.
BY WWW.BOSS



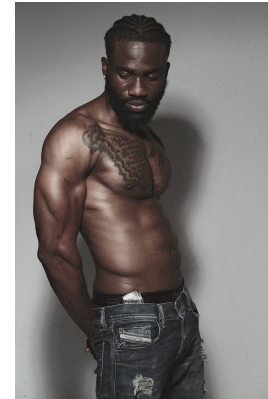
BOSS MODELS ARE THE ONLY ONE WHO KNOWS HOW TO PUT TOGETHER THE PERFECT LOOK. FROM THE T-SHIRT AND JEANS TO THE SUIT AND DRESS, BOSS MODELS KNOW HOW TO PUT TOGETHER THE PERFECT LOOK. FROM THE T-SHIRT AND JEANS TO THE SUIT AND DRESS, BOSS MODELS KNOW HOW TO PUT TOGETHER THE PERFECT LOOK.

KHALID AGBABIAKA

Height: 190cm Chest: 104cm Waist: 89cm Suit: 42 L Shoe: 10 UK Hair: Black Eyes: Brown

BOSS MODELS

JOHANNESBURG



KHALID AGBABIAKA

Height: 190cm Chest: 104cm Waist: 89cm Suit: 42 L Shoe: 10 UK Hair: Black Eyes: Brown