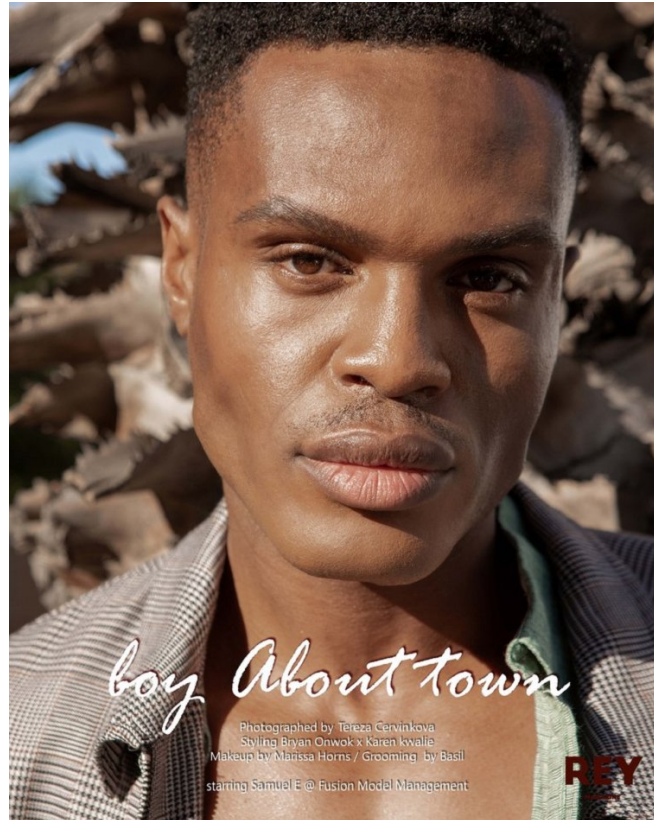


BOSS MODELS

JOHANNESBURG



boy About town

Photographed by Tereza Cervinkova
Styling Brian Onwok x Karen Kwalle
Makeup by Marissa Horns / Grooming by Basil
starring Samuel E @ Fusion Model Management

REY



LEFFRONTE

HERE TO STAY

photographer / JACQUES WEYERS
model / SAMUEL EDM @ FUSION MODEL MGMT CT
style / KAREN KWALLE & BRYAN ONWOK @ KREATIVE KOLLISIONS INC
make up and hair / MELODIE



LEFFRONTE

Jacket / THROWAWAY TWENTY
shirt / H&M
trousers / H&M

LEFFRONTE.EU

SAMUEL EDM

Height: 194cm Chest: 98cm Waist: 82cm Suit: 45 L Shoe: 9.5 UK Hair: Black Eyes: Brown

BOSS MODELS

JOHANNESBURG

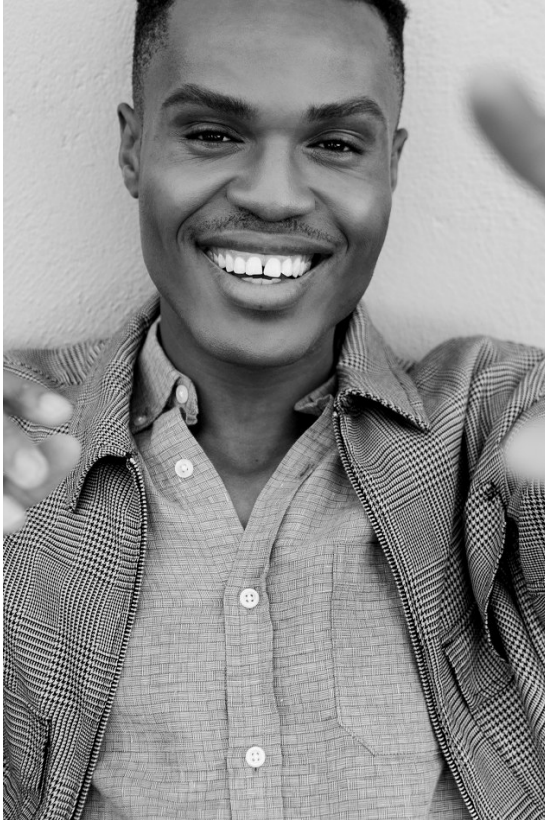


SAMUEL EDAM

Height: 194cm Chest: 98cm Waist: 82cm Suit: 45 L Shoe: 9.5 UK Hair: Black Eyes: Brown

BOSS MODELS

JOHANNESBURG



SAMUEL EDAM

Height: 194cm Chest: 98cm Waist: 82cm Suit: 45 L Shoe: 9.5 UK Hair: Black Eyes: Brown

BOSS MODELS

JOHANNESBURG



SAMUEL EDAM

Height: 194cm Chest: 98cm Waist: 82cm Suit: 45 L Shoe: 9.5 UK Hair: Black Eyes: Brown

BOSS MODELS

JOHANNESBURG



SAMUEL EDAM

Height: 194cm Chest: 98cm Waist: 82cm Suit: 45 L Shoe: 9.5 UK Hair: Black Eyes: Brown