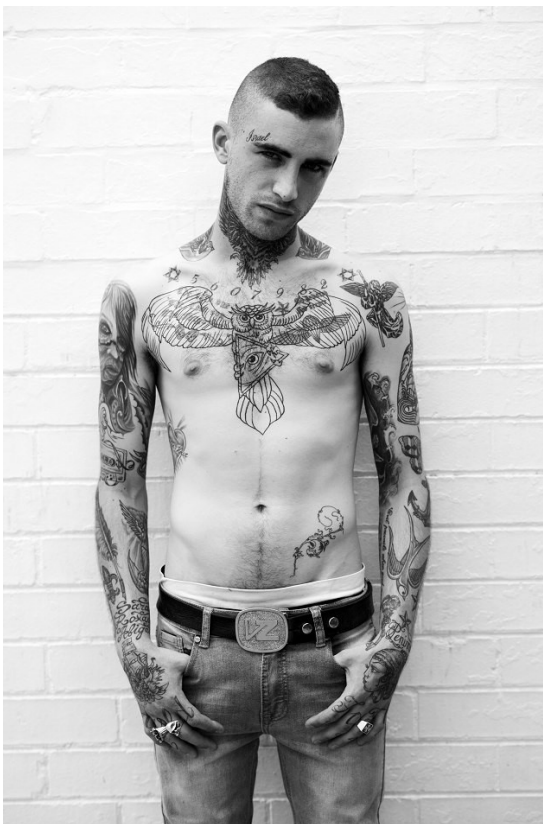


citizen
A Division Of Boss Models



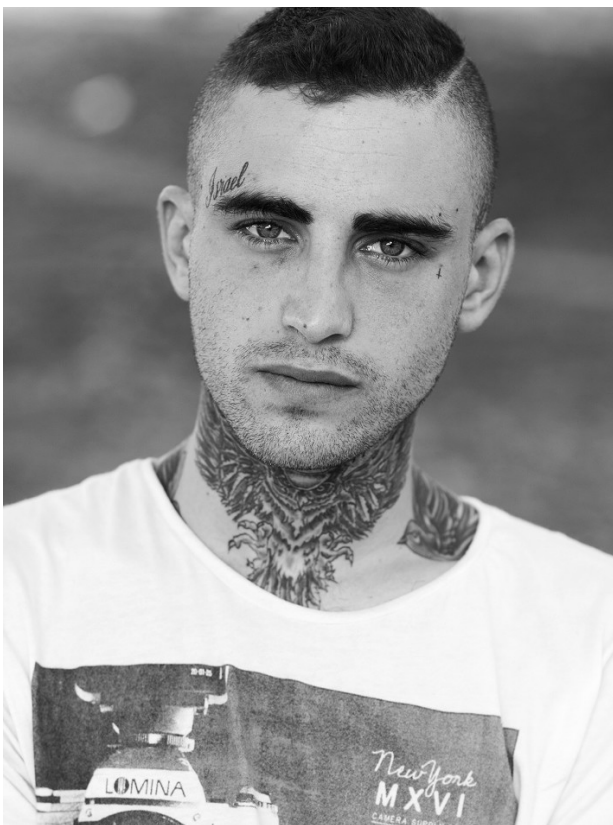
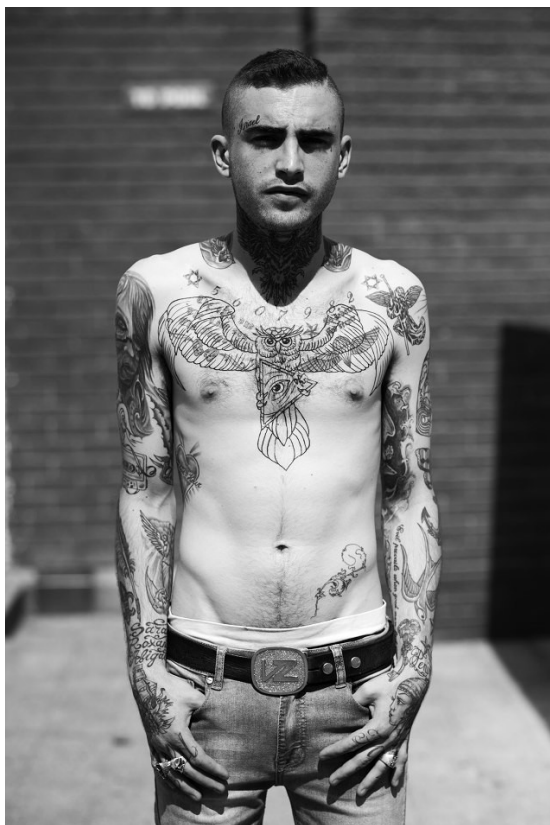
GABRIEL ACKERMAN

Height: 170cm Chest: 89cm Waist: 80cm Shoe: 7 UK Hair: Brown Eyes: Blue



GABRIEL ACKERMAN

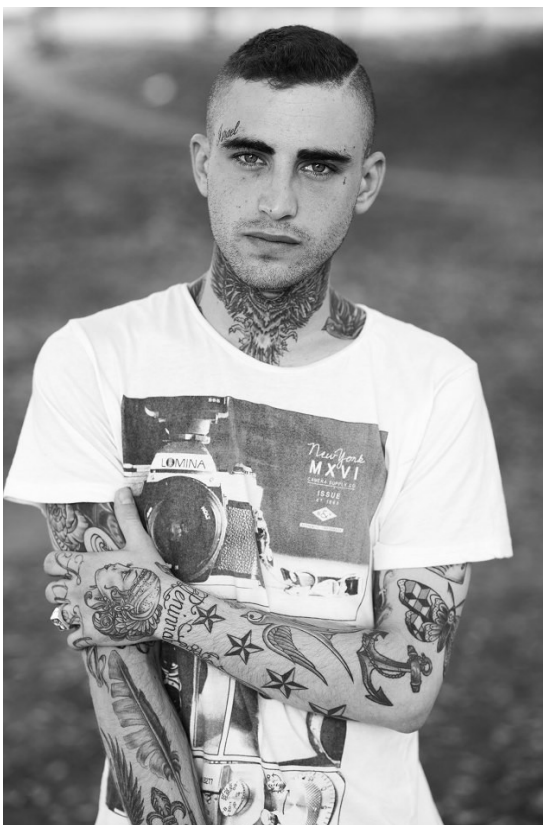
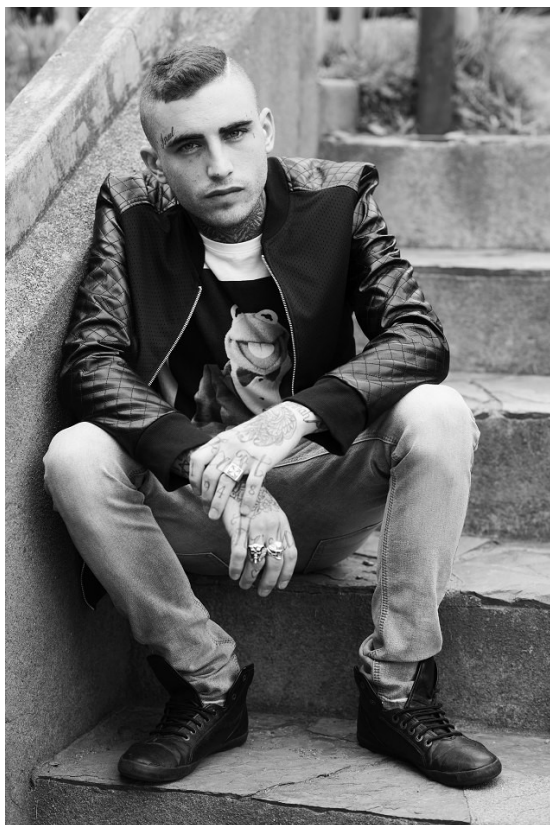
Height: 170cm Chest: 89cm Waist: 80cm Shoe: 7 UK Hair: Brown Eyes: Blue



GABRIEL ACKERMAN

Height: 170cm Chest: 89cm Waist: 80cm Shoe: 7 UK Hair: Brown Eyes: Blue

citizen
A Division Of Boss Models



GABRIEL ACKERMAN

Height: 170cm Chest: 89cm Waist: 80cm Shoe: 7 UK Hair: Brown Eyes: Blue