

citizen
A Division Of Boss Models



MERLE WILLMORE

Height: 175cm Bust: 105cm Waist: 85cm Hips: 98cm Shoe: 7 UK Hair: Salt and Pepper Eyes: Green



MERLE WILLMORE

Height: 175cm Bust: 105cm Waist: 85cm Hips: 98cm Shoe: 7 UK Hair: Salt and Pepper Eyes: Green



MERLE WILLMORE

Height: 175cm Bust: 105cm Waist: 85cm Hips: 98cm Shoe: 7 UK Hair: Salt and Pepper Eyes: Green



MERLE WILLMORE

Height: 175cm Bust: 105cm Waist: 85cm Hips: 98cm Shoe: 7 UK Hair: Salt and Pepper Eyes: Green

citizen
A Division Of Boss Models



MERLE WILLMORE

Height: 175cm Bust: 105cm Waist: 85cm Hips: 98cm Shoe: 7 UK Hair: Salt and Pepper Eyes: Green

citizen
A Division Of Boss Models



MERLE WILLMORE

Height: 175cm Bust: 105cm Waist: 85cm Hips: 98cm Shoe: 7 UK Hair: Salt and Pepper Eyes: Green



MERLE WILLMORE

Height: 175cm Bust: 105cm Waist: 85cm Hips: 98cm Shoe: 7 UK Hair: Salt and Pepper Eyes: Green

HG MODE

'Gegene my liggaamsvorm en ouderdom, het ek altyd die stewelpypvorm verkies. Maar ek was baie verbaas om te ontdek ek voel eintlik heel op my gemak en funky in kereljeans!

MERLE WORSLEY WILLMORE (68)
KUNSTENAAR EN LEWENSAFRIGTER



WENK KORT KÉRELJEANS
As jy soos Merle, 'n onderstebedriehoekvorm het, kan kereljeans help om jou verhoudings te balanseer omdat dit lossen om jou heupe sit.

Top R229, Makro Kort kereljeans R550, Woolworths, Trui R339 en halsnoer R99, Milady's, Plat skoene R150 en skouersak R450, Foschini.



WENK STEWELPYJEANS
Dié soort jeans is baie vlietend vir 'n driehoekliggaamstipe. Dit skep vorm en die lengte is perfek.

Hemp R350, Woolworths, Stewelpyjeans R399, Foschini, Baadjie R1 299, Queenspark, Hakskoene R359 en halsnoerstel R139, Milady's, Handsak R450, Foschini.

(Blaai om)

hulagenoot.com 18 APRIL 2019 | 35



MERLE WILLMORE

Height: 175cm Bust: 105cm Waist: 85cm Hips: 98cm Shoe: 7 UK Hair: Salt and Pepper Eyes: Green

citizen
A Division Of Boss Models



MERLE WILLMORE

Height: 175cm Bust: 105cm Waist: 85cm Hips: 98cm Shoe: 7 UK Hair: Salt and Pepper Eyes: Green

citizen
A Division Of Boss Models



MERLE WILLMORE

Height: 175cm Bust: 105cm Waist: 85cm Hips: 98cm Shoe: 7 UK Hair: Salt and Pepper Eyes: Green



MERLE WILLMORE

Height: 175cm Bust: 105cm Waist: 85cm Hips: 98cm Shoe: 7 UK Hair: Salt and Pepper Eyes: Green

citizen
A Division Of Boss Models



MERLE WILLMORE

Height: 175cm Bust: 105cm Waist: 85cm Hips: 98cm Shoe: 7 UK Hair: Salt and Pepper Eyes: Green



MERLE WILLMORE

Height: 175cm Bust: 105cm Waist: 85cm Hips: 98cm Shoe: 7 UK Hair: Salt and Pepper Eyes: Green

citizen
A Division Of Boss Models



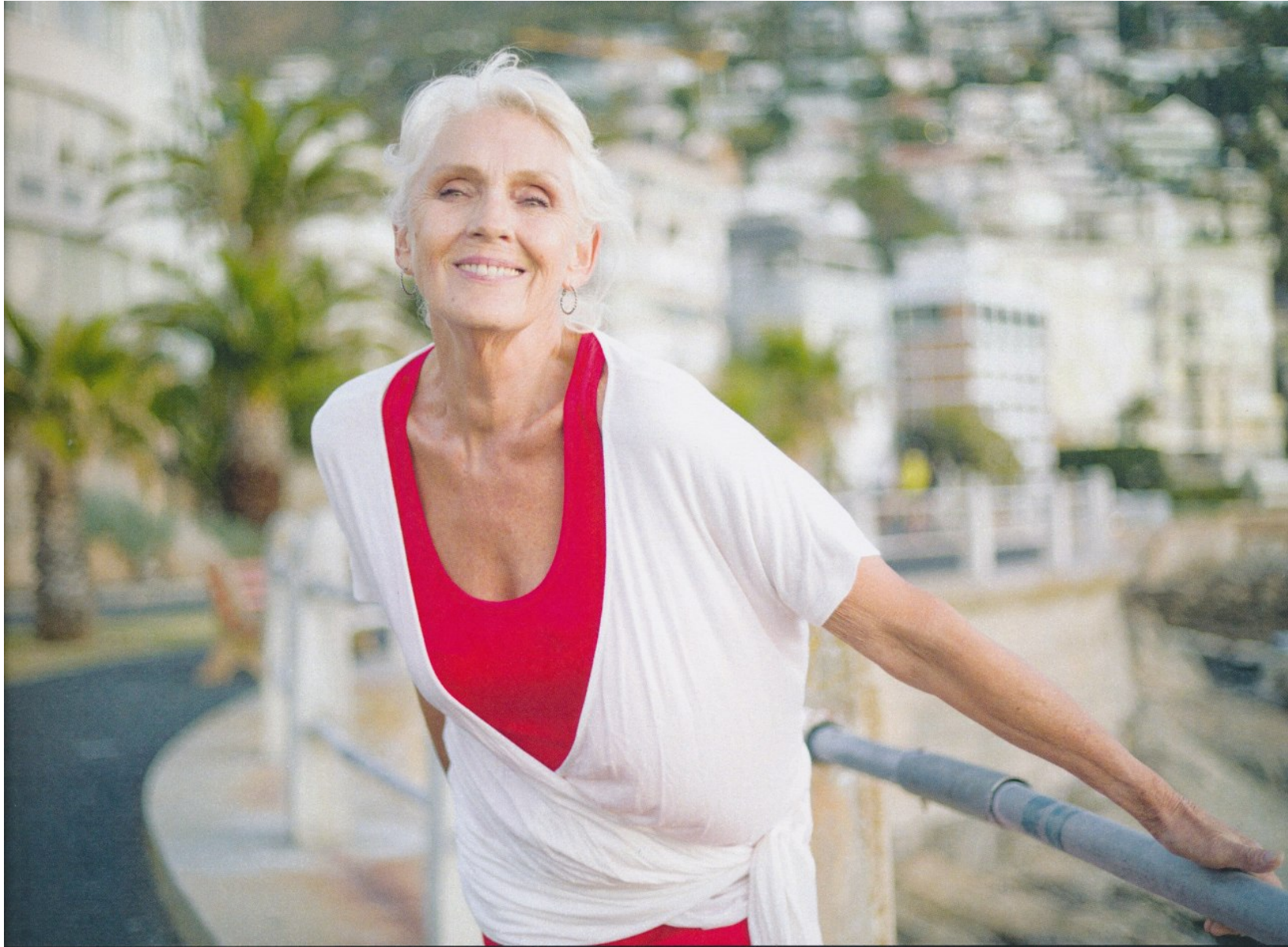
MERLE WILLMORE

Height: 175cm Bust: 105cm Waist: 85cm Hips: 98cm Shoe: 7 UK Hair: Salt and Pepper Eyes: Green



MERLE WILLMORE

Height: 175cm Bust: 105cm Waist: 85cm Hips: 98cm Shoe: 7 UK Hair: Salt and Pepper Eyes: Green



MERLE WILLMORE

Height: 175cm Bust: 105cm Waist: 85cm Hips: 98cm Shoe: 7 UK Hair: Salt and Pepper Eyes: Green