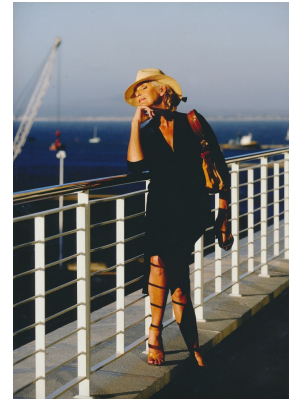


citizen

A Division Of Boss Models



MERLE WILLMORE

Height: 175cm Bust: 105cm Waist: 85cm Hips: 98cm Shoe: 7 UK Hair: Salt and Pepper Eyes: Green

citizen

A Division Of Boss Models



MERLE WILLMORE

Height: 175cm Bust: 105cm Waist: 85cm Hips: 98cm Shoe: 7 UK Hair: Salt and Pepper Eyes: Green