



MERLE WILLMORE

Height: 175cm Bust: 105cm Waist: 85cm Hips: 98cm Shoe: 7 UK Hair: Salt and Pepper Eyes: Green

citizen
A Division Of Boss Models



MERLE WILLMORE

Height: 175cm Bust: 105cm Waist: 85cm Hips: 98cm Shoe: 7 UK Hair: Salt and Pepper Eyes: Green

citizen
A Division Of Boss Models



MERLE WILLMORE

Height: 175cm Bust: 105cm Waist: 85cm Hips: 98cm Shoe: 7 UK Hair: Salt and Pepper Eyes: Green



HG MODE

'Gegene my liggaamsvorm en ouderdom, het ek altyd die stewelpypvorm verkies. Maar ek was baie verbaas om te ontdek ek voel eintlik heel op my gemak en funky in kerejens!

MERLE WORSLEY WILLMORE (68)
KUNSTENAAR EN LEWENSFRIGTER

WENK KORT KERELJEANS
As jy, soos Merle, 'n onderste bodië-voelvorm het, kan kerejens help om jou verhoudings te balanseer omdat dit looier om jou heupe sit.

Top R229, Makro Kort kerejens R230, Woolworths, Tu R230 en halssjaal R231, Mlady, Flakleone R232 en skouer sak R450, Fiesch.

WENK STEWELPYJEANS
Dit soort jeans is baie vliend vir 'n driehoek-liggaamstipe. Dit skep vorm en die lengte is perfek.

Hong R250, Westwacht, Stewelpypjeans R252, Fiesch, Blyde R1 259, Damespark, Halssjaal R230 en halssjaal R231, R251, Mlady, Handboek R450, Fiesch.

[Blad om]

hugmode.com 18 APRIL 2019 | 35



MERLE WILLMORE

Height: 175cm Bust: 105cm Waist: 85cm Hips: 98cm Shoe: 7 UK Hair: Salt and Pepper Eyes: Green

citizen
A Division Of Boss Models



MERLE WILLMORE

Height: 175cm Bust: 105cm Waist: 85cm Hips: 98cm Shoe: 7 UK Hair: Salt and Pepper Eyes: Green

citizen
A Division Of Boss Models



MERLE WILLMORE

Height: 175cm Bust: 105cm Waist: 85cm Hips: 98cm Shoe: 7 UK Hair: Salt and Pepper Eyes: Green

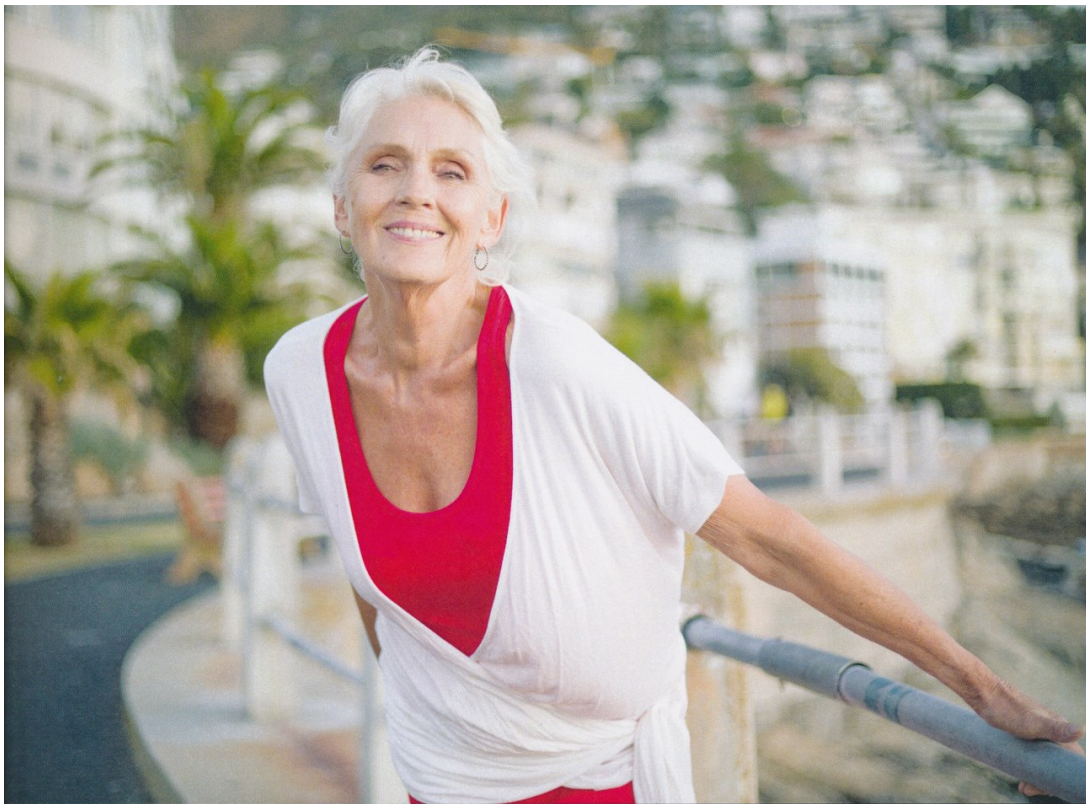
citizen
A Division Of Boss Models



MERLE WILLMORE

Height: 175cm Bust: 105cm Waist: 85cm Hips: 98cm Shoe: 7 UK Hair: Salt and Pepper Eyes: Green

citizen
A Division Of Boss Models



MERLE WILLMORE

Height: 175cm Bust: 105cm Waist: 85cm Hips: 98cm Shoe: 7 UK Hair: Salt and Pepper Eyes: Green