

citizen
A Division Of Boss Models

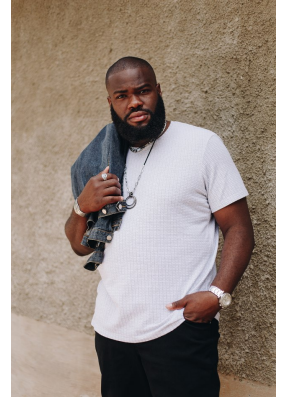


RANDOLPH ODINAKA

Height: 191cm Chest: 126cm Waist: 122cm Suit: 42 R Shoe: 14 UK Hair: Black Eyes: Brown

citizen

A Division Of Boss Models



RANDOLPH ODINAKA

Height: 191cm Chest: 126cm Waist: 122cm Suit: 42 R Shoe: 14 UK Hair: Black Eyes: Brown