

**citizen**  
*A Division Of Boss Models*



**THEA LAMPLOUGH**

Height: 173cm Bust: 87cm Waist: 67cm Hips: 96cm Shoe: 6 UK Hair: Dark Brown Eyes: Brown



**THEA LAMPOUGH**

Height: 173cm Bust: 87cm Waist: 67cm Hips: 96cm Shoe: 6 UK Hair: Dark Brown Eyes: Brown



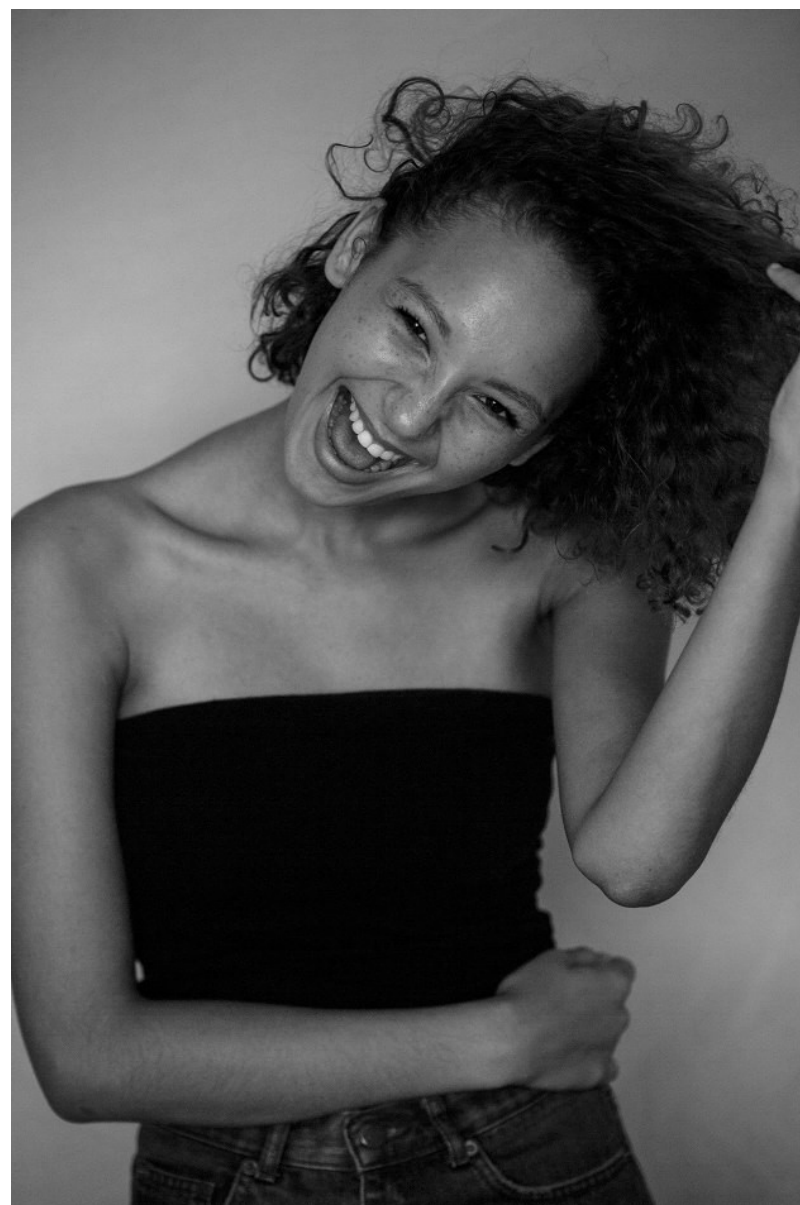
**THEA LAMPLOUGH**

Height: 173cm Bust: 87cm Waist: 67cm Hips: 96cm Shoe: 6 UK Hair: Dark Brown Eyes: Brown



**THEA LAMPOUGH**

Height: 173cm Bust: 87cm Waist: 67cm Hips: 96cm Shoe: 6 UK Hair: Dark Brown Eyes: Brown



**THEA LAMPOUGH**

Height: 173cm Bust: 87cm Waist: 67cm Hips: 96cm Shoe: 6 UK Hair: Dark Brown Eyes: Brown

**citizen**  
*A Division Of Boss Models*



## THEA LAMPOUGH

Height: 173cm Bust: 87cm Waist: 67cm Hips: 96cm Shoe: 6 UK Hair: Dark Brown Eyes: Brown

**citizen**  
*A Division Of Boss Models*



**THEA LAMPOUGH**

Height: 173cm Bust: 87cm Waist: 67cm Hips: 96cm Shoe: 6 UK Hair: Dark Brown Eyes: Brown



## THEA LAMPOUGH

Height: 173cm Bust: 87cm Waist: 67cm Hips: 96cm Shoe: 6 UK Hair: Dark Brown Eyes: Brown



ELLE SHOPPING

ELLE SHOPPING



Tip: When it comes to prints, the rule is that vertical



stripes elongate instantly. You'll thank us later!

TRENCH, R859, AND JEANS, R599, BOTH COTTON ON; DRESS, R799, H&M; SHOES, R1 590, EUROPA ART SHOES; EARRINGS, R2 400, FOLLI FOLLIE; BAG, R4 700, DR. MARTENS; RING, R5 059, KIRSTEN GOSS

Tip: Bright colours will offset classic checks



for a quick, spring-friendly update

COAT, R1 499, AND DRESS, R629, BOTH H&M; T-SHIRT, R169, COTTON ON; SHOES, R1 990, EUROPA ART SHOES; CHOKER, R219 FOR SET, COLETTE HAYMAN; WATCH, R2 300, FOLLI FOLLIE



throw one over a slip-dress for effortless layering

Tip: A duster never goes out of style –

COAT, R1 499, H&M; BRA, R999, AND SNEAKERS, R2 299, BOTH PUMA; JEANS, R2 499, CALVIN KLEIN; SUNGLASSES, R4 649, RETROSPERFUTURE AT MOSCON OPTICS; EARRING HOOPS, R999, AND EARRING CHARMS, R500 EACH, BOTH FOLLI FOLLIE; RINGS, R219 FOR SET, AND BAG, R399, BOTH COLETTE HAYMAN

PHOTOGRAPHY: ZANDEL OPIESMAN; PHOTOGRAPHY ASSISTANTS: BRISTIANA VALLERIE, SONGI NOSEI, TETI, SIBRA BENTONIC / RACHASSANT; HAIR: JAMIE L; HAIR MAKEUP: BEBE, MAKE UP CAROLINE GREFF; MODEL: THEAT BOSS MODELS S.A.B

THEA LAMPOUGH

Height: 173cm Bust: 87cm Waist: 67cm Hips: 96cm Shoe: 6 UK Hair: Dark Brown Eyes: Brown



**THEA LAMPOUGH**

Height: 173cm Bust: 87cm Waist: 67cm Hips: 96cm Shoe: 6 UK Hair: Dark Brown Eyes: Brown



**THEA LAMPOUGH**

Height: 173cm Bust: 87cm Waist: 67cm Hips: 96cm Shoe: 6 UK Hair: Dark Brown Eyes: Brown



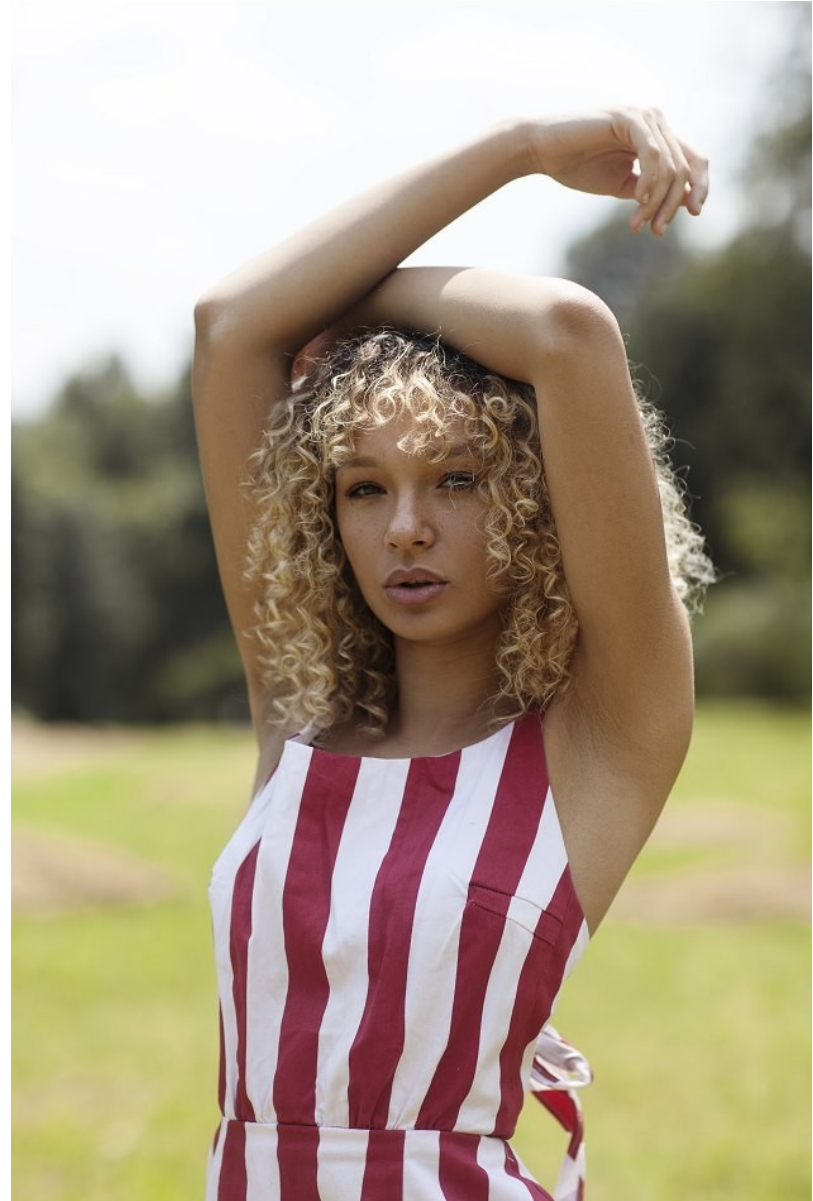
**THEA LAMPOUGH**

Height: 173cm Bust: 87cm Waist: 67cm Hips: 96cm Shoe: 6 UK Hair: Dark Brown Eyes: Brown



**THEA LAMPOUGH**

Height: 173cm Bust: 87cm Waist: 67cm Hips: 96cm Shoe: 6 UK Hair: Dark Brown Eyes: Brown



**THEA LAMPOUGH**

Height: 173cm Bust: 87cm Waist: 67cm Hips: 96cm Shoe: 6 UK Hair: Dark Brown Eyes: Brown



**THEA LAMPOUGH**

Height: 173cm Bust: 87cm Waist: 67cm Hips: 96cm Shoe: 6 UK Hair: Dark Brown Eyes: Brown

**citizen**  
*A Division Of Boss Models*



**THEA LAMPLOUGH**

Height: 173cm Bust: 87cm Waist: 67cm Hips: 96cm Shoe: 6 UK Hair: Dark Brown Eyes: Brown



**citizen**  
*A Division Of Boss Models*



**THEA LAMPLOUGH**

Height: 173cm Bust: 87cm Waist: 67cm Hips: 96cm Shoe: 6 UK Hair: Dark Brown Eyes: Brown