

**THEA LAMPOUGH**

Height: 173cm Bust: 87cm Waist: 67cm Hips: 96cm Shoe: 6 UK Hair: Dark Brown Eyes: Brown

**citizen**  
*A Division Of Boss Models*



**THEA LAMPLOUGH**

Height: 173cm Bust: 87cm Waist: 67cm Hips: 96cm Shoe: 6 UK Hair: Dark Brown Eyes: Brown





**THEA LAMPOUGH**

Height: 173cm Bust: 87cm Waist: 67cm Hips: 96cm Shoe: 6 UK Hair: Dark Brown Eyes: Brown





**THEA LAMPOUGH**

Height: 173cm Bust: 87cm Waist: 67cm Hips: 96cm Shoe: 6 UK Hair: Dark Brown Eyes: Brown



ELLE SHOPPING



Tip: When it comes to prints, the rule is that vertical stripes elongate instantly. You'll thank us later!

TRENCH: R899. AND JEANS: R699. BOTH COTTON ON DRESS: R799. HELM: SHOES: R1 699.  
EUROPA ART SHOES: LARRINES: R2 499. FOLLI FOLLIE: BAG: R4 799. DIR: MARTENS  
RING: R5 099. KRISTEN GOSS

PHOTOGRAPHY: ANDREW HARRISON. STYLING: ANDREW HARRISON. HAIR: ANDREW HARRISON. MAKEUP: ANDREW HARRISON. PROP STYLING: ANDREW HARRISON. SET DESIGN: ANDREW HARRISON. GROOMING: ANDREW HARRISON. HAIR: ANDREW HARRISON. MAKEUP: ANDREW HARRISON. PROP STYLING: ANDREW HARRISON. SET DESIGN: ANDREW HARRISON. GROOMING: ANDREW HARRISON.

ELLE SHOPPING



Tip: Bright colours will offset classic checks for a quick, spring-friendly update

Tip: A duster never goes out of style - throw one over a slip-dress for effortless layering

COAT: R1 499. AND DRESS: R829. BOTH HELM: T-SHIRT: R188. COTTON ON SHOES: R1 999. EUROPA ART SHOES: CHOKER: R219 FOR SET. COLETTE HAYMAN WATCH: R2 300. FOLLI FOLLIE

COAT: R1 499. HELM: BRA: R899. AND ONEKATES: R2 299. BOTH FOLLA: JEANS: R2 499. CALVIN KLEIN: SUNGLASSES: R8 699. RETROSCOPIC: EYE: R4 899. COLETTE HAYMAN: EARRING: HOOP: R199. AND LARRINE: CHAINS: R899. LACE: BOTH FOLLI FOLLIE. RINGS: R219 FOR SET. AND BAG: R399. BOTH COLETTE HAYMAN



**THEA LAMPLOUGH**

Height: 173cm Bust: 87cm Waist: 67cm Hips: 96cm Shoe: 6 UK Hair: Dark Brown Eyes: Brown

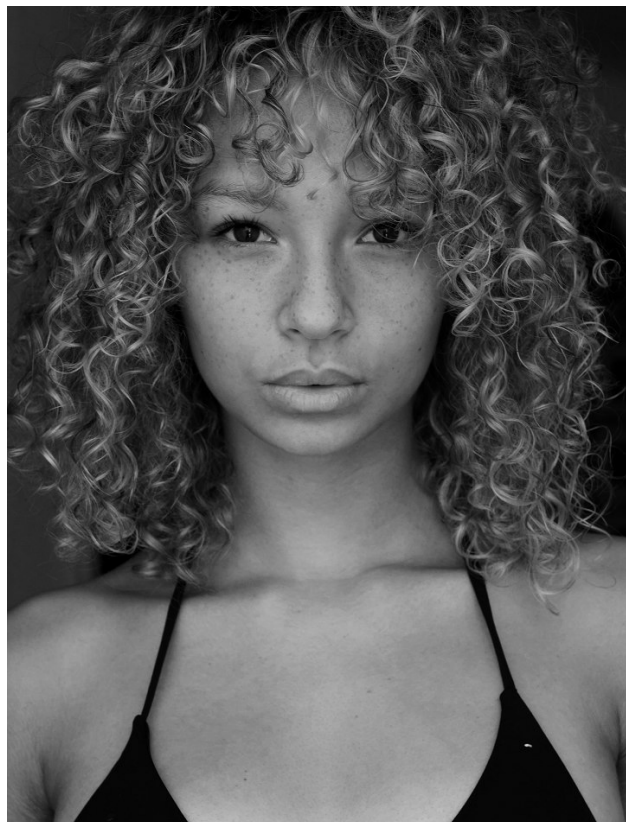




**THEA LAMPLOUGH**

Height: 173cm Bust: 87cm Waist: 67cm Hips: 96cm Shoe: 6 UK Hair: Dark Brown Eyes: Brown





**THEA LAMPOUGH**

Height: 173cm Bust: 87cm Waist: 67cm Hips: 96cm Shoe: 6 UK Hair: Dark Brown Eyes: Brown





**THEA LAMPOUGH**

Height: 173cm Bust: 87cm Waist: 67cm Hips: 96cm Shoe: 6 UK Hair: Dark Brown Eyes: Brown



**citizen**  
*A Division Of Boss Models*



## THEA LAMPLOUGH

Height: 173cm Bust: 87cm Waist: 67cm Hips: 96cm Shoe: 6 UK Hair: Dark Brown Eyes: Brown