

BOSS MODELS

CAPE TOWN

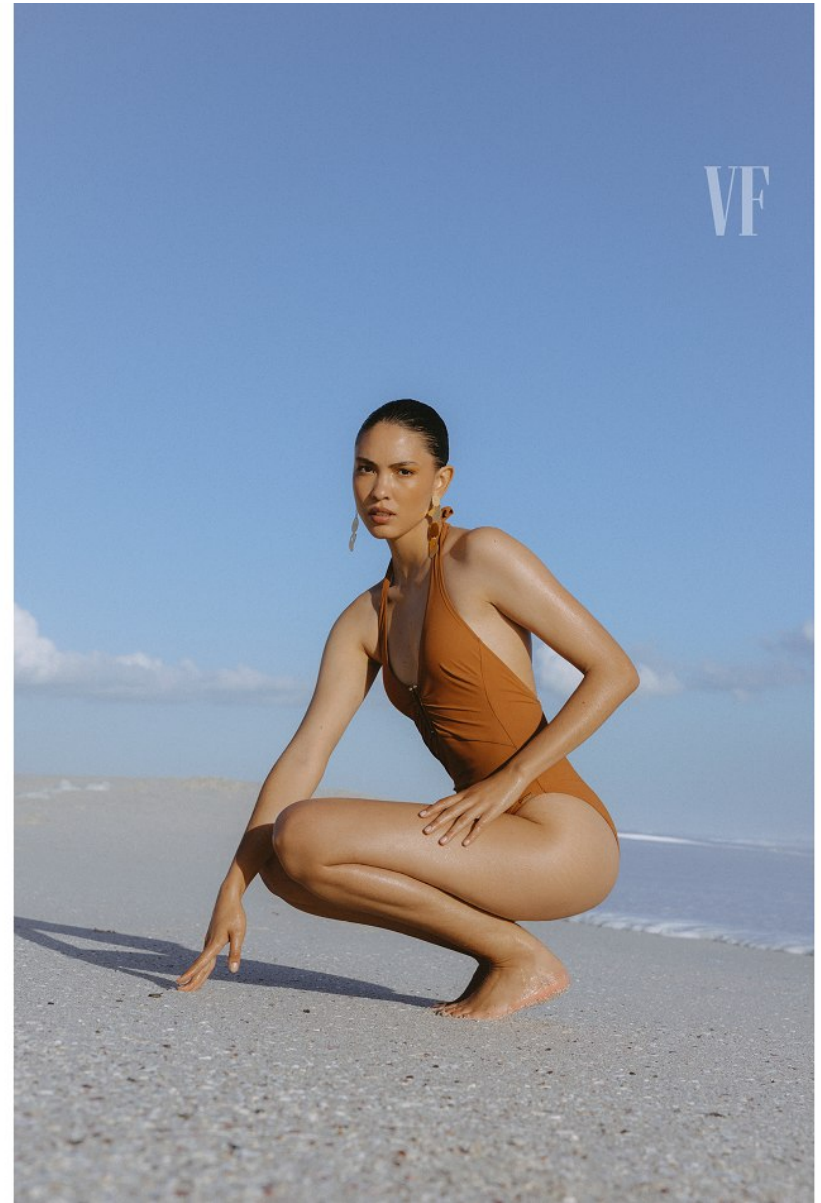


NINA HENRY

Height: 177cm Bust: 82cm Waist: 65cm Hips: 95cm Shoe: 4.5 UK Hair: Black Eyes: Brown

BOSS MODELS

CAPE TOWN



NINA HENRY

Height: 177cm Bust: 82cm Waist: 65cm Hips: 95cm Shoe: 4.5 UK Hair: Black Eyes: Brown

BOSS MODELS

CAPE TOWN



Strij
koffi
LEA
Ora
utii
hana
orga
R3
Cliff
Men
Ture
chut
Cobb
R2

NINA HENRY

Height: 177cm Bust: 82cm Waist: 65cm Hips: 95cm Shoe: 4.5 UK Hair: Black Eyes: Brown

BOSS MODELS

CAPE TOWN



Top H&M R329;
jacket R1 499 and
trousers R1 299
both Tranery; hat
The North Face
R299; earrings R105;
necklace R180 and
ring R165 (for pack
of four) all By Cara



Jacket H&M R799;
cap Puma x Sue Tsai
R349; earrings Yellow
Jewellery R650

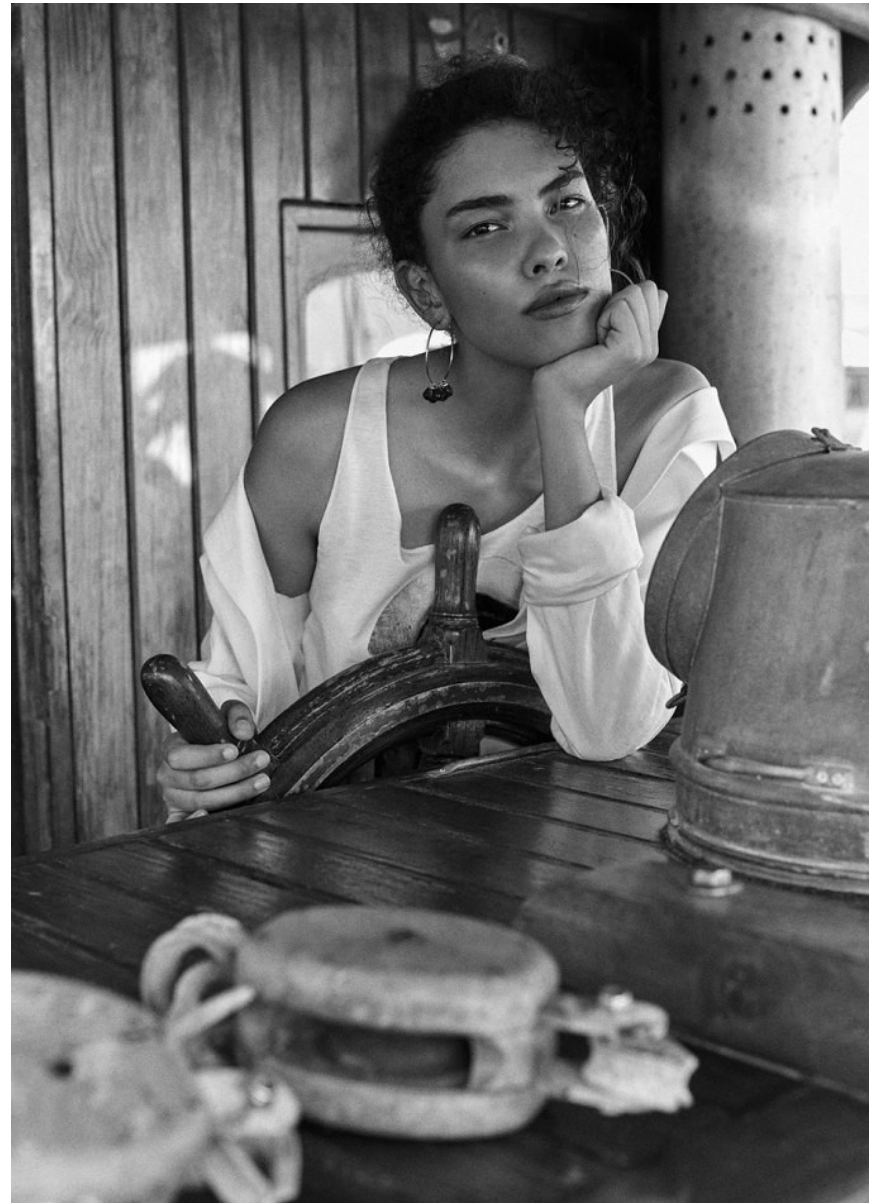
22 glamour.co.za

NINA HENRY

Height: 177cm Bust: 82cm Waist: 65cm Hips: 95cm Shoe: 4.5 UK Hair: Black Eyes: Brown

BOSS MODELS

CAPE TOWN



NINA HENRY

Height: 177cm Bust: 82cm Waist: 65cm Hips: 95cm Shoe: 4.5 UK Hair: Black Eyes: Brown

BOSS MODELS

CAPE TOWN



NINA HENRY

Height: 177cm Bust: 82cm Waist: 65cm Hips: 95cm Shoe: 4.5 UK Hair: Black Eyes: Brown

BOSS MODELS

CAPE TOWN

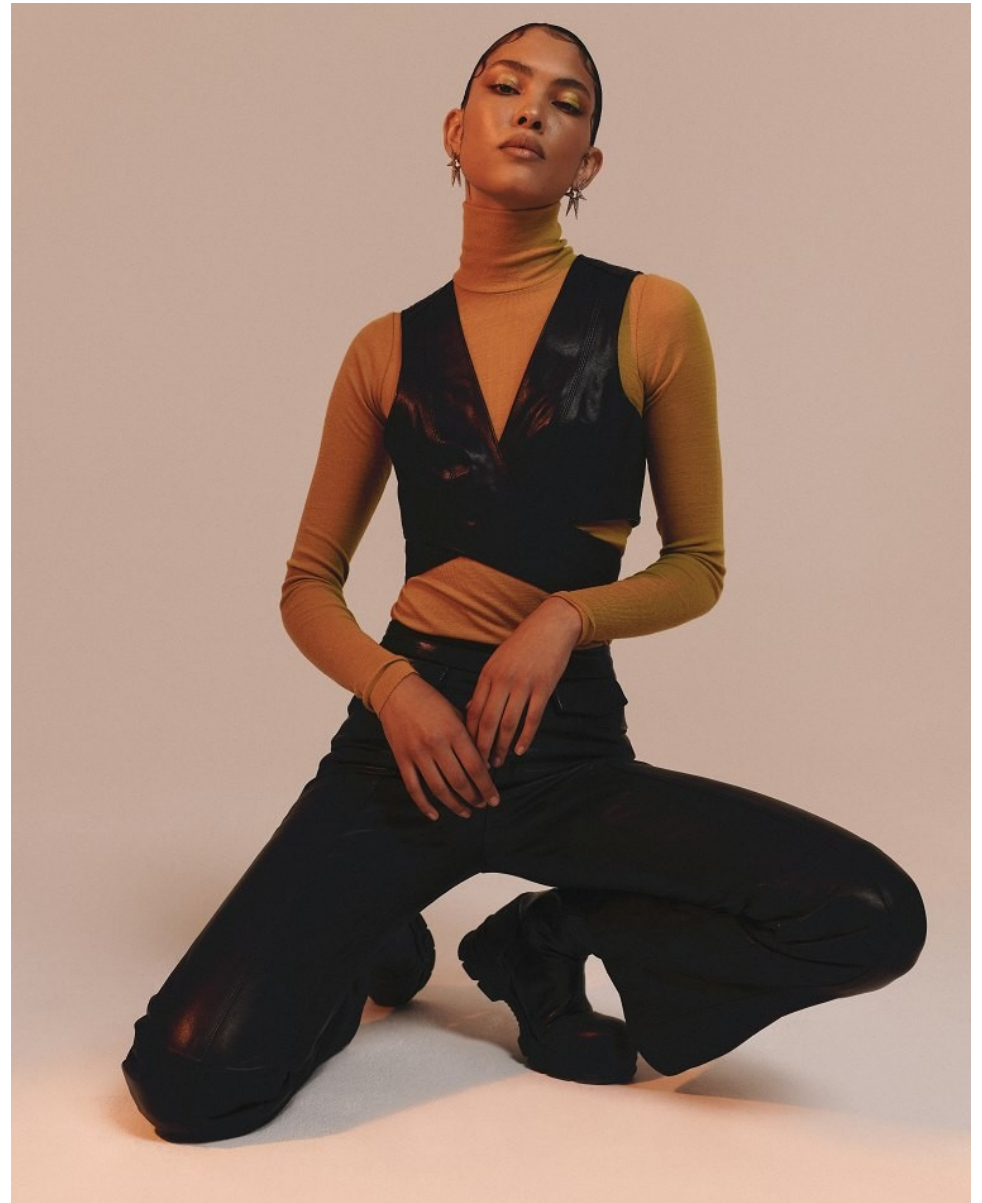


NINA HENRY

Height: 177cm Bust: 82cm Waist: 65cm Hips: 95cm Shoe: 4.5 UK Hair: Black Eyes: Brown

BOSS MODELS

CAPE TOWN



NINA HENRY

Height: 177cm Bust: 82cm Waist: 65cm Hips: 95cm Shoe: 4.5 UK Hair: Black Eyes: Brown

BOSS MODELS

CAPE TOWN



NINA HENRY

Height: 177cm Bust: 82cm Waist: 65cm Hips: 95cm Shoe: 4.5 UK Hair: Black Eyes: Brown

BOSS MODELS

CAPE TOWN



NINA HENRY

Height: 177cm Bust: 82cm Waist: 65cm Hips: 95cm Shoe: 4.5 UK Hair: Black Eyes: Brown

BOSS MODELS

CAPE TOWN



NINA HENRY

Height: 177cm Bust: 82cm Waist: 65cm Hips: 95cm Shoe: 4.5 UK Hair: Black Eyes: Brown

BOSS MODELS

CAPE TOWN



NINA HENRY

Height: 177cm Bust: 82cm Waist: 65cm Hips: 95cm Shoe: 4.5 UK Hair: Black Eyes: Brown

BOSS MODELS

CAPE TOWN



SPENCER © 270 (PAUL & JOE)
BIKINIBROEKJE © 320 (MADE
BY DAWNY) (SHEILA GUGOLVIA
NY THERESA) ARMBAND MET
WITTE SCHELLEN (ARMAND
MET GOUDEN SCHELLEN
(EBBIDE TOHUM) TWEE
KITTINGEN MET PARELS
ALS ARMBAND (EENVOUD)
SANDALEN (VERSUS (VERSACE))

Je kent het gevoel: het einde van
een hete stranddag, zout in je haar,
gloeïende huid, het zand nog aan je
billen. En nu een cocktail graag.

HAPPY HOUR

STYLING / DANIELLE KEMPEN

FOTOGRAFIE / JASPER RENS VAN ES

NINA HENRY

Height: 177cm Bust: 82cm Waist: 65cm Hips: 95cm Shoe: 4.5 UK Hair: Black Eyes: Brown

BOSS MODELS

CAPE TOWN



NINA HENRY

Height: 177cm Bust: 82cm Waist: 65cm Hips: 95cm Shoe: 4.5 UK Hair: Black Eyes: Brown

BOSS MODELS

CAPE TOWN



NINA HENRY

Height: 177cm Bust: 82cm Waist: 65cm Hips: 95cm Shoe: 4.5 UK Hair: Black Eyes: Brown

BOSS MODELS

CAPE TOWN



NINA HENRY

Height: 177cm Bust: 82cm Waist: 65cm Hips: 95cm Shoe: 4.5 UK Hair: Black Eyes: Brown

BOSS MODELS

CAPE TOWN

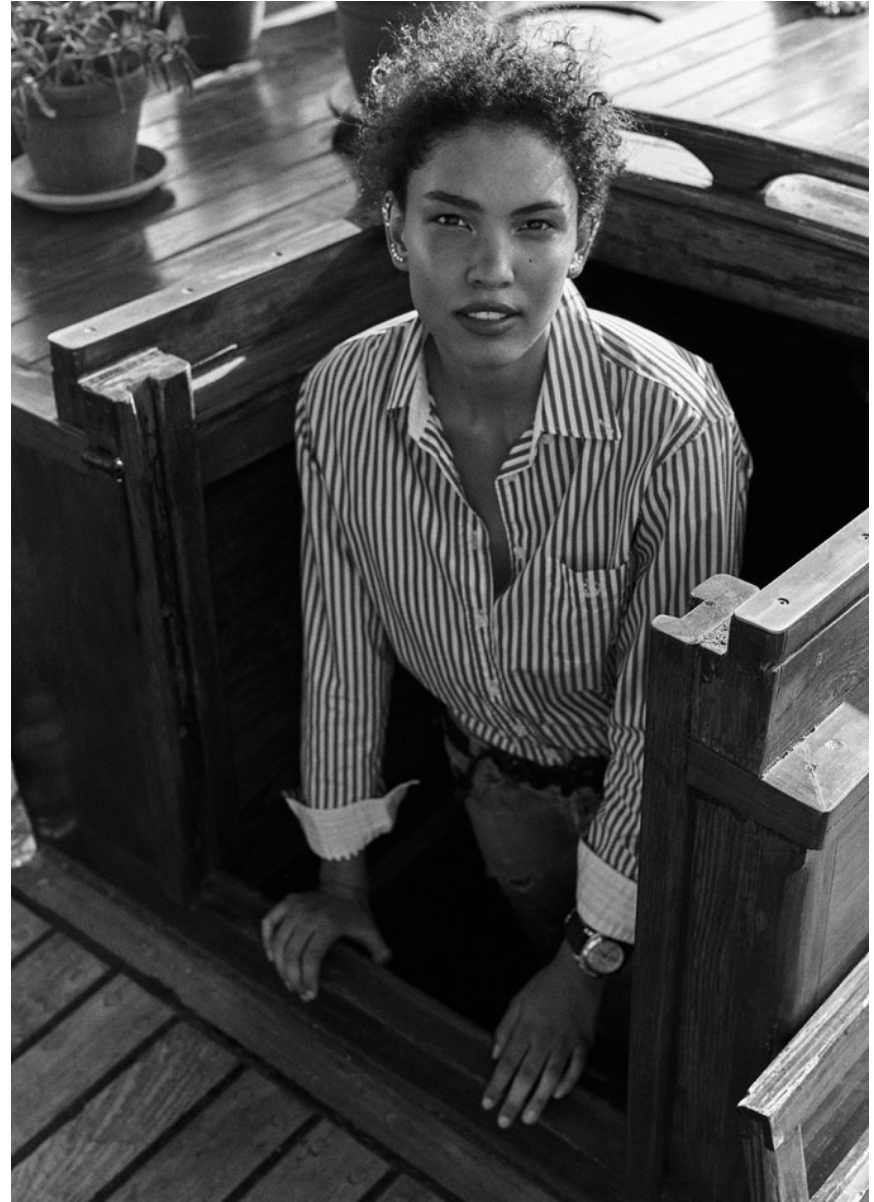


NINA HENRY

Height: 177cm Bust: 82cm Waist: 65cm Hips: 95cm Shoe: 4.5 UK Hair: Black Eyes: Brown

BOSS MODELS

CAPE TOWN



NINA HENRY

Height: 177cm Bust: 82cm Waist: 65cm Hips: 95cm Shoe: 4.5 UK Hair: Black Eyes: Brown

BOSS MODELS

CAPE TOWN



NINA HENRY

Height: 177cm Bust: 82cm Waist: 65cm Hips: 95cm Shoe: 4.5 UK Hair: Black Eyes: Brown

BOSS MODELS

CAPE TOWN



NINA HENRY

Height: 177cm Bust: 82cm Waist: 65cm Hips: 95cm Shoe: 4.5 UK Hair: Black Eyes: Brown

BOSS MODELS

CAPE TOWN



NINA HENRY

Height: 177cm Bust: 82cm Waist: 65cm Hips: 95cm Shoe: 4.5 UK Hair: Black Eyes: Brown

BOSS MODELS

CAPE TOWN



NINA HENRY

Height: 177cm Bust: 82cm Waist: 65cm Hips: 95cm Shoe: 4.5 UK Hair: Black Eyes: Brown