

BOSS MODELS

CAPE TOWN



NONDI BEATTIE

Height: 175cm Bust: 80cm Waist: 63cm Hips: 92cm Shoe: 7 UK Hair: Dark Brown Eyes: Brown

BOSS MODELS

CAPE TOWN



NONDI BEATTIE

Height: 175cm Bust: 80cm Waist: 63cm Hips: 92cm Shoe: 7 UK Hair: Dark Brown Eyes: Brown

BOSS MODELS

CAPE TOWN



NONDI BEATTIE

Height: 175cm Bust: 80cm Waist: 63cm Hips: 92cm Shoe: 7 UK Hair: Dark Brown Eyes: Brown

BOSS MODELS

CAPE TOWN

DEUTSCHE AUSGABE

APRIL 2024
DEUTSCHLAND € 7,50
ÖSTERREICH € 7,50
SCHWEIZ SFR 12,20

ELLE

WAS TRÄUME VERRATEN
EIN GUIDE DURCH DIE NACHT

FRESH UP!
ALLES FÜR FRÜHLINGSFRISCHE STRAHLE-HAUT!

Mode
MAGIE

FEDERLEICHTE KLEIDER, ACCESSOIRES MIT WOW-EFFEKT

NONDI BEATTIE

Height: 175cm Bust: 80cm Waist: 63cm Hips: 92cm Shoe: 7 UK Hair: Dark Brown Eyes: Brown

BOSS MODELS

CAPE TOWN



NONDI BEATTIE

Height: 175cm Bust: 80cm Waist: 63cm Hips: 92cm Shoe: 7 UK Hair: Dark Brown Eyes: Brown

BOSS MODELS

CAPE TOWN



NONDI BEATTIE

Height: 175cm Bust: 80cm Waist: 63cm Hips: 92cm Shoe: 7 UK Hair: Dark Brown Eyes: Brown

BOSS MODELS

CAPE TOWN



NONDI BEATTIE

Height: 175cm Bust: 80cm Waist: 63cm Hips: 92cm Shoe: 7 UK Hair: Dark Brown Eyes: Brown

BOSS MODELS

CAPE TOWN



NONDI BEATTIE

Height: 175cm Bust: 80cm Waist: 63cm Hips: 92cm Shoe: 7 UK Hair: Dark Brown Eyes: Brown

BOSS MODELS

CAPE TOWN



NONDI BEATTIE

Height: 175cm Bust: 80cm Waist: 63cm Hips: 92cm Shoe: 7 UK Hair: Dark Brown Eyes: Brown

BOSS MODELS

CAPE TOWN



NONDI BEATTIE

Height: 175cm Bust: 80cm Waist: 63cm Hips: 92cm Shoe: 7 UK Hair: Dark Brown Eyes: Brown

BOSS MODELS

CAPE TOWN



NONDI BEATTIE

Height: 175cm Bust: 80cm Waist: 63cm Hips: 92cm Shoe: 7 UK Hair: Dark Brown Eyes: Brown

BOSS MODELS

CAPE TOWN

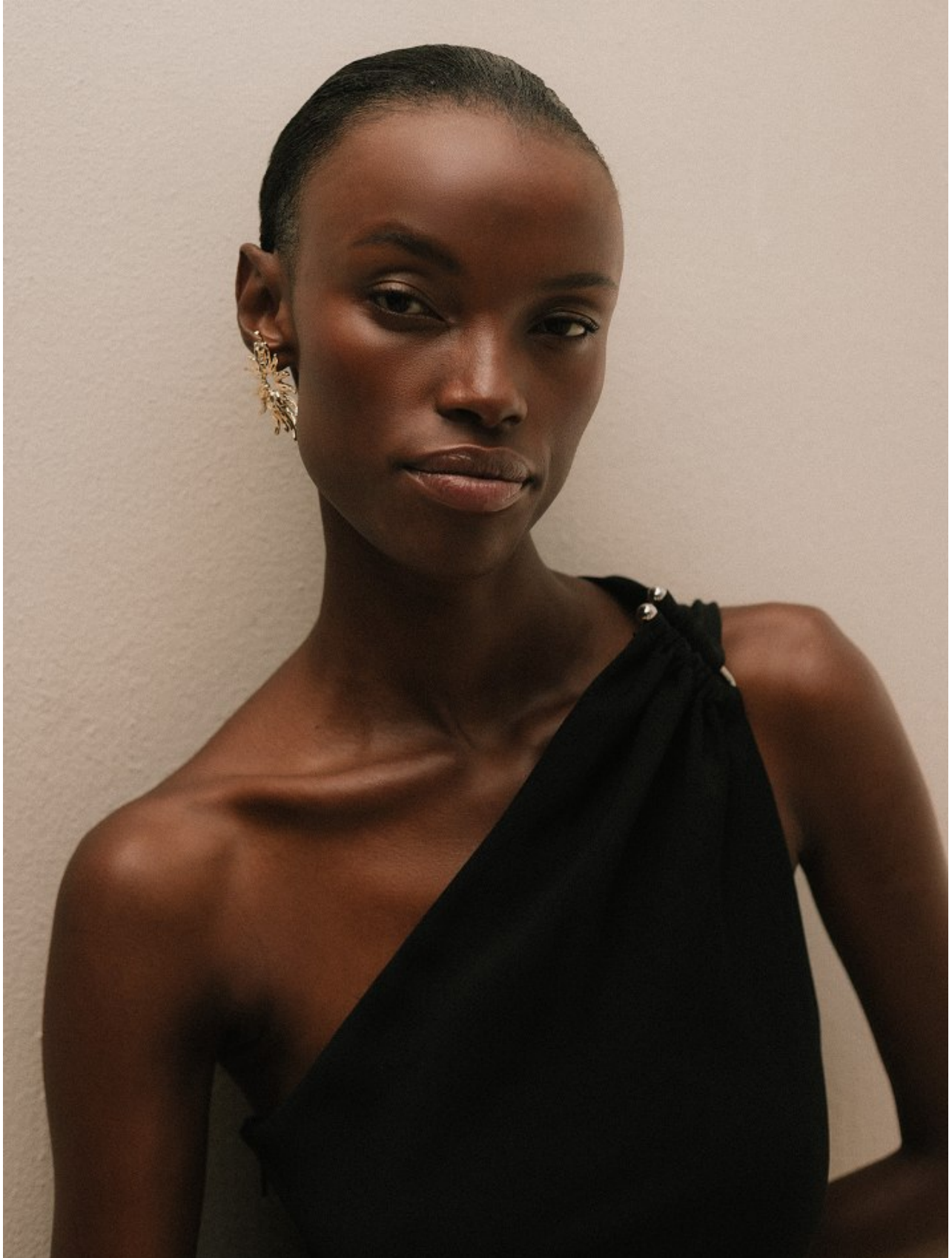


NONDI BEATTIE

Height: 175cm Bust: 80cm Waist: 63cm Hips: 92cm Shoe: 7 UK Hair: Dark Brown Eyes: Brown

BOSS MODELS

CAPE TOWN

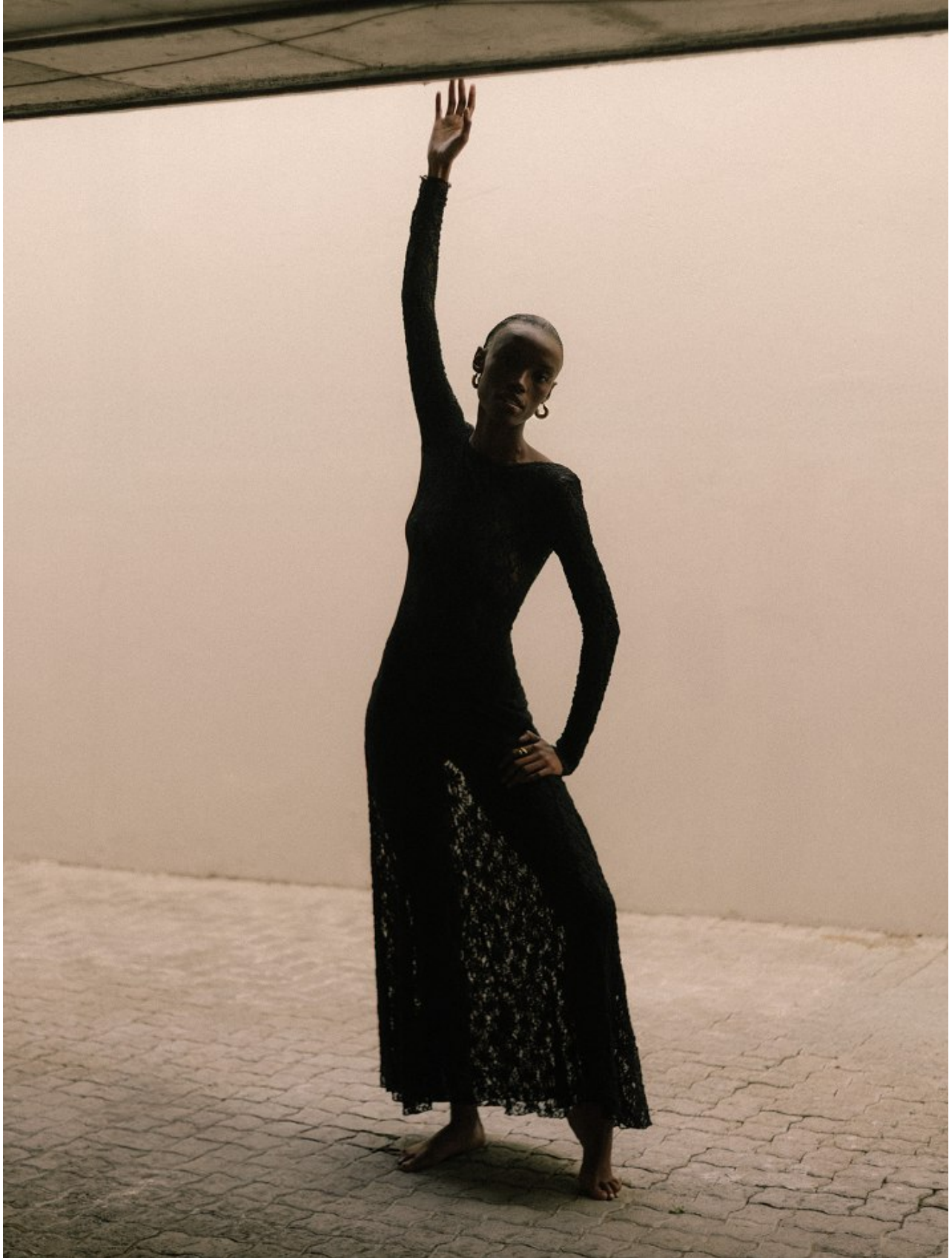


NONDI BEATTIE

Height: 175cm Bust: 80cm Waist: 63cm Hips: 92cm Shoe: 7 UK Hair: Dark Brown Eyes: Brown

BOSS MODELS

CAPE TOWN



NONDI BEATTIE

Height: 175cm Bust: 80cm Waist: 63cm Hips: 92cm Shoe: 7 UK Hair: Dark Brown Eyes: Brown

BOSS MODELS

CAPE TOWN



NONDI BEATTIE

Height: 175cm Bust: 80cm Waist: 63cm Hips: 92cm Shoe: 7 UK Hair: Dark Brown Eyes: Brown

BOSS MODELS

CAPE TOWN



NONDI BEATTIE

Height: 175cm Bust: 80cm Waist: 63cm Hips: 92cm Shoe: 7 UK Hair: Dark Brown Eyes: Brown

BOSS MODELS

CAPE TOWN

LINKE SEITE: Kleid aus mehrlagigem Tüll, von RALPH LAUREN, um 9650 €. Kette „Leaf“ mit Diamanten: Tamara Comalli. Tasche: Chanel.
DIESE SEITE: Paillettenkleid von ISABEL MARANT, um 3900 €. Ohrringe „Gypsy“: Tamara Comalli. Ring: Swarovski



NONDI BEATTIE

Height: 175cm Bust: 80cm Waist: 63cm Hips: 92cm Shoe: 7 UK Hair: Dark Brown Eyes: Brown

BOSS MODELS

CAPE TOWN



LINKE SEITE: Bustier aus
Seide und Tüll, um 5900 €
Hosenrock aus Satin,
um 7500 €. Ohrringe
Alles von **GIORGIO ARMANI**
DIESE SEITE: Mantel
von W.O. 21, P.O.A. BR,
um 75 € und Höschen,
um 30 €. Beides von
CALYRA Schmuck, Alham

NONDI BEATTIE

Height: 175cm Bust: 80cm Waist: 63cm Hips: 92cm Shoe: 7 UK Hair: Dark Brown Eyes: Brown

BOSS MODELS

CAPE TOWN



NONDI BEATTIE

Height: 175cm Bust: 80cm Waist: 63cm Hips: 92cm Shoe: 7 UK Hair: Dark Brown Eyes: Brown

BOSS MODELS

CAPE TOWN



NONDI BEATTIE

Height: 175cm Bust: 80cm Waist: 63cm Hips: 92cm Shoe: 7 UK Hair: Dark Brown Eyes: Brown

BOSS MODELS

CAPE TOWN



NONDI BEATTIE

Height: 175cm Bust: 80cm Waist: 63cm Hips: 92cm Shoe: 7 UK Hair: Dark Brown Eyes: Brown

BOSS MODELS

CAPE TOWN



NONDI BEATTIE

Height: 175cm Bust: 80cm Waist: 63cm Hips: 92cm Shoe: 7 UK Hair: Dark Brown Eyes: Brown

BOSS MODELS

CAPE TOWN



NONDI BEATTIE

Height: 175cm Bust: 80cm Waist: 63cm Hips: 92cm Shoe: 7 UK Hair: Dark Brown Eyes: Brown

BOSS MODELS

CAPE TOWN



NONDI BEATTIE

Height: 175cm Bust: 80cm Waist: 63cm Hips: 92cm Shoe: 7 UK Hair: Dark Brown Eyes: Brown

BOSS MODELS

CAPE TOWN



NONDI BEATTIE

Height: 175cm Bust: 80cm Waist: 63cm Hips: 92cm Shoe: 7 UK Hair: Dark Brown Eyes: Brown

BOSS MODELS

CAPE TOWN



NONDI BEATTIE

Height: 175cm Bust: 80cm Waist: 63cm Hips: 92cm Shoe: 7 UK Hair: Dark Brown Eyes: Brown

BOSS MODELS

CAPE TOWN

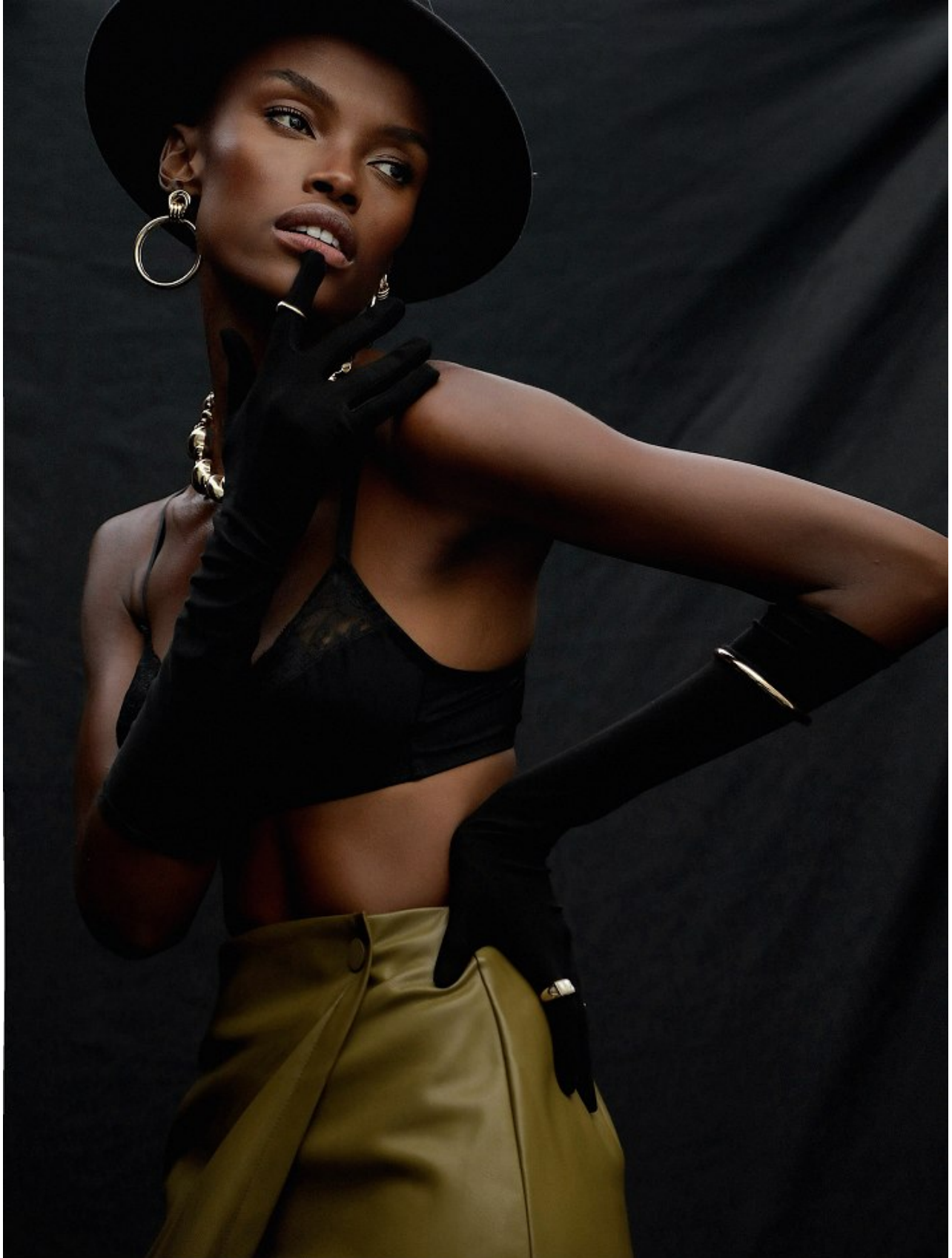


NONDI BEATTIE

Height: 175cm Bust: 80cm Waist: 63cm Hips: 92cm Shoe: 7 UK Hair: Dark Brown Eyes: Brown

BOSS MODELS

CAPE TOWN

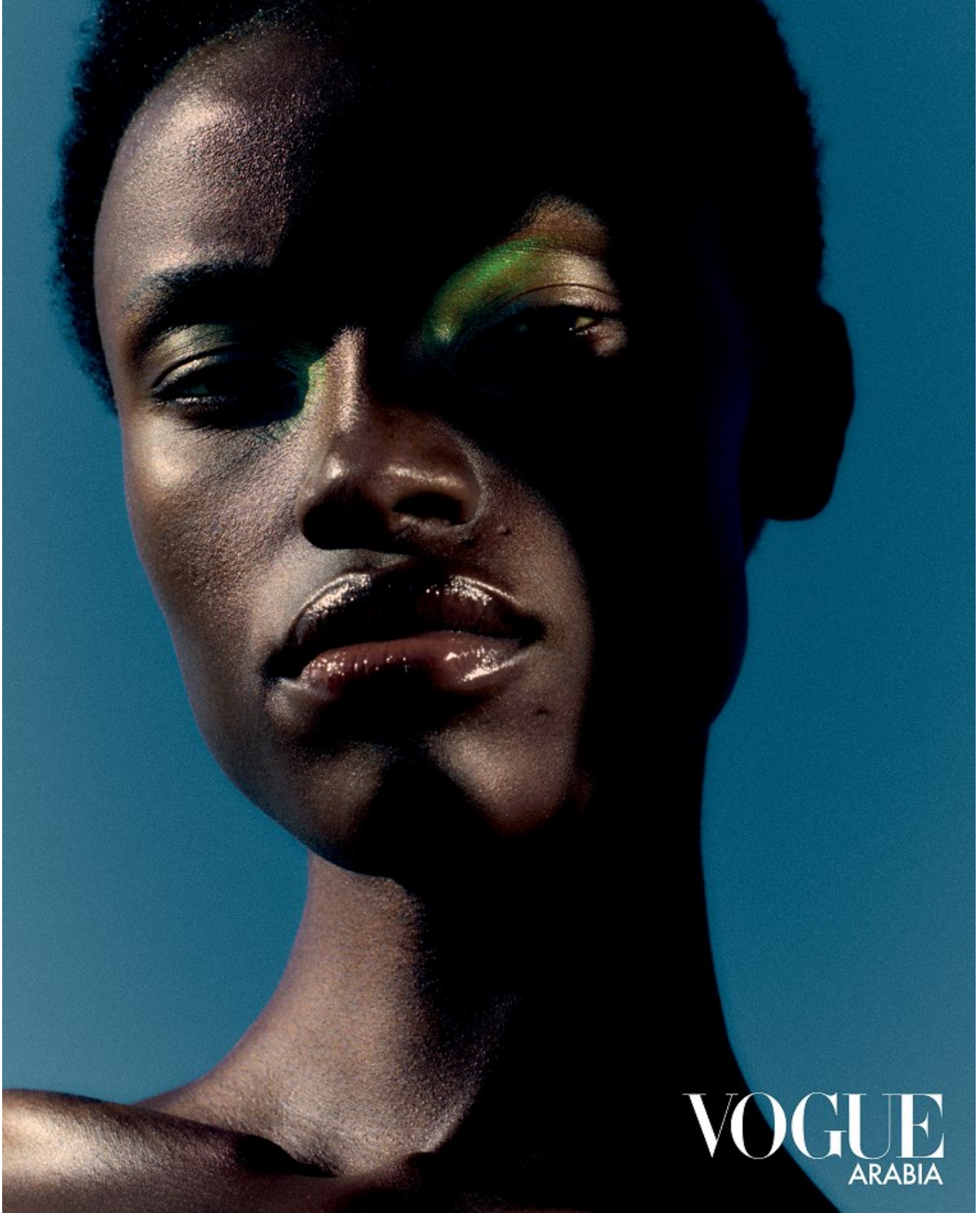


NONDI BEATTIE

Height: 175cm Bust: 80cm Waist: 63cm Hips: 92cm Shoe: 7 UK Hair: Dark Brown Eyes: Brown

BOSS MODELS

CAPE TOWN



NONDI BEATTIE

Height: 175cm Bust: 80cm Waist: 63cm Hips: 92cm Shoe: 7 UK Hair: Dark Brown Eyes: Brown

BOSS MODELS

CAPE TOWN



NONDI BEATTIE

Height: 175cm Bust: 80cm Waist: 63cm Hips: 92cm Shoe: 7 UK Hair: Dark Brown Eyes: Brown

BOSS MODELS

CAPE TOWN



NONDI BEATTIE

Height: 175cm Bust: 80cm Waist: 63cm Hips: 92cm Shoe: 7 UK Hair: Dark Brown Eyes: Brown

BOSS MODELS

CAPE TOWN



NONDI BEATTIE

Height: 175cm Bust: 80cm Waist: 63cm Hips: 92cm Shoe: 7 UK Hair: Dark Brown Eyes: Brown

BOSS MODELS

CAPE TOWN



NONDI BEATTIE

Height: 175cm Bust: 80cm Waist: 63cm Hips: 92cm Shoe: 7 UK Hair: Dark Brown Eyes: Brown

BOSS MODELS

CAPE TOWN



NONDI BEATTIE

Height: 175cm Bust: 80cm Waist: 63cm Hips: 92cm Shoe: 7 UK Hair: Dark Brown Eyes: Brown

BOSS MODELS

CAPE TOWN



NONDI BEATTIE

Height: 175cm Bust: 80cm Waist: 63cm Hips: 92cm Shoe: 7 UK Hair: Dark Brown Eyes: Brown

BOSS MODELS

CAPE TOWN



NONDI BEATTIE

Height: 175cm Bust: 80cm Waist: 63cm Hips: 92cm Shoe: 7 UK Hair: Dark Brown Eyes: Brown

BOSS MODELS

CAPE TOWN



NONDI BEATTIE

Height: 175cm Bust: 80cm Waist: 63cm Hips: 92cm Shoe: 7 UK Hair: Dark Brown Eyes: Brown

BOSS MODELS

CAPE TOWN



NONDI BEATTIE

Height: 175cm Bust: 80cm Waist: 63cm Hips: 92cm Shoe: 7 UK Hair: Dark Brown Eyes: Brown

BOSS MODELS

CAPE TOWN



NONDI BEATTIE

Height: 175cm Bust: 80cm Waist: 63cm Hips: 92cm Shoe: 7 UK Hair: Dark Brown Eyes: Brown

BOSS MODELS

CAPE TOWN



STYLING-TIPP

Schlaghosen sind wieder da! Und am liebsten, wie in den Seventies, mit ganz weitem Schlag! Und die Hosenlänge? Sehr lang! Das lenkt den Blick auf die Schuhe. Und das können spitze Pumps sein, Loafer oder Ballerinas mit interessanten Details (z.B. „two tone“).

NONDI BEATTIE

Height: 175cm Bust: 80cm Waist: 63cm Hips: 92cm Shoe: 7 UK Hair: Dark Brown Eyes: Brown

BOSS MODELS

CAPE TOWN

LINKE SEITE: Jacke aus
Wolle, mit Strass, von
CELINE BY HEDI SLIMANE,
P. o. A. Puntohose von
DOROTHEE SCHUMACHER,
um 395 €. Loafer: Jimmy Choo.
DIESE SEITE: Mantel aus
Wolle, mit Strasssteinen,
von DRIES VAN NOTEN,
um 3350 €. Weißgoldcreole
mit Diamanten: Messika



NONDI BEATTIE

Height: 175cm Bust: 80cm Waist: 63cm Hips: 92cm Shoe: 7 UK Hair: Dark Brown Eyes: Brown

BOSS MODELS

CAPE TOWN



NONDI BEATTIE

Height: 175cm Bust: 80cm Waist: 63cm Hips: 92cm Shoe: 7 UK Hair: Dark Brown Eyes: Brown

BOSS MODELS

CAPE TOWN



NONDI BEATTIE

Height: 175cm Bust: 80cm Waist: 63cm Hips: 92cm Shoe: 7 UK Hair: Dark Brown Eyes: Brown

BOSS MODELS

CAPE TOWN



NONDI BEATTIE

Height: 175cm Bust: 80cm Waist: 63cm Hips: 92cm Shoe: 7 UK Hair: Dark Brown Eyes: Brown

BOSS MODELS

CAPE TOWN



NONDI BEATTIE

Height: 175cm Bust: 80cm Waist: 63cm Hips: 92cm Shoe: 7 UK Hair: Dark Brown Eyes: Brown

BOSS MODELS

CAPE TOWN



NONDI BEATTIE

Height: 175cm Bust: 80cm Waist: 63cm Hips: 92cm Shoe: 7 UK Hair: Dark Brown Eyes: Brown

BOSS MODELS

CAPE TOWN



NONDI BEATTIE

Height: 175cm Bust: 80cm Waist: 63cm Hips: 92cm Shoe: 7 UK Hair: Dark Brown Eyes: Brown

BOSS MODELS

CAPE TOWN



NONDI BEATTIE

Height: 175cm Bust: 80cm Waist: 63cm Hips: 92cm Shoe: 7 UK Hair: Dark Brown Eyes: Brown

BOSS MODELS

CAPE TOWN



NONDI BEATTIE

Height: 175cm Bust: 80cm Waist: 63cm Hips: 92cm Shoe: 7 UK Hair: Dark Brown Eyes: Brown

BOSS MODELS

CAPE TOWN



NONDI BEATTIE

Height: 175cm Bust: 80cm Waist: 63cm Hips: 92cm Shoe: 7 UK Hair: Dark Brown Eyes: Brown

BOSS MODELS

CAPE TOWN

LINKE SEITE: Seidenmantel, um 3290 €. Hemdblusenkleid im Meerjungfrauen-Stil aus Baumwolle, um 3290 €. Beides von ETRÖ. Loafer: Roger Vivier. Schmuck: Ring „Wave“ und Ohrring „Gypsy“: Tamara Comalli.

DIESE SEITE: Blazer und Hose aus Gabardine-Wolle. Bluse aus Popeline. Alles von DOLCE & GABBANA, P. a. A. Zylinder: Nicki Marquardt. Schmuck: Swarovski. Schuhe: Dolce & Gabbana

Model: Nondi Beattie/
Boss Models. Makeup:
Campbell Ritchie/Art
Department. Haare: Anja
Fichtenmayr/Les Artists.
Produktion und Casting:
North South Productions.
Stylingassistentz: Tinka
Valérie Knoll

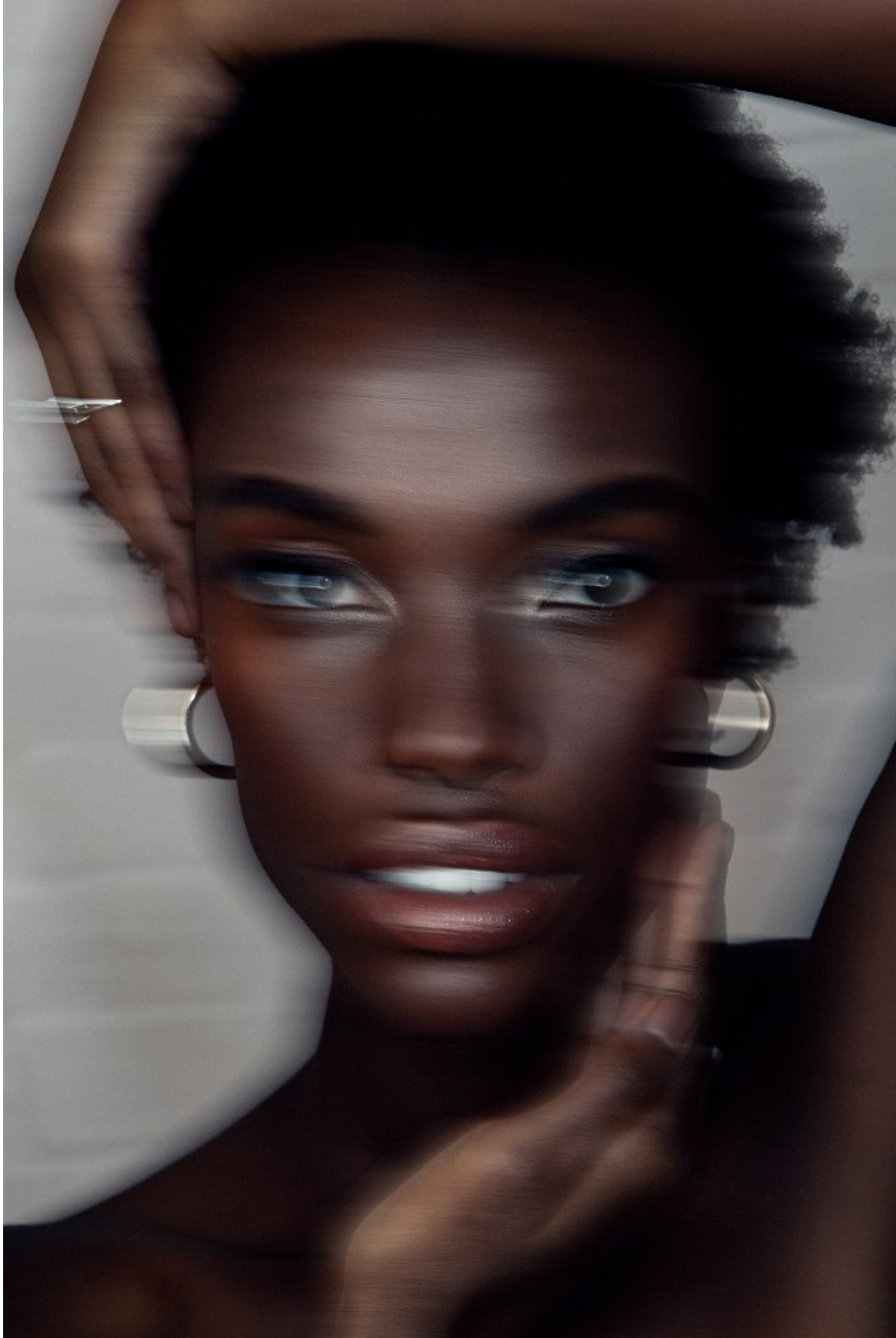


NONDI BEATTIE

Height: 175cm Bust: 80cm Waist: 63cm Hips: 92cm Shoe: 7 UK Hair: Dark Brown Eyes: Brown

BOSS MODELS

CAPE TOWN



NONDI BEATTIE

Height: 175cm Bust: 80cm Waist: 63cm Hips: 92cm Shoe: 7 UK Hair: Dark Brown Eyes: Brown

BOSS MODELS

CAPE TOWN



NONDI BEATTIE

Height: 175cm Bust: 80cm Waist: 63cm Hips: 92cm Shoe: 7 UK Hair: Dark Brown Eyes: Brown

BOSS MODELS

CAPE TOWN

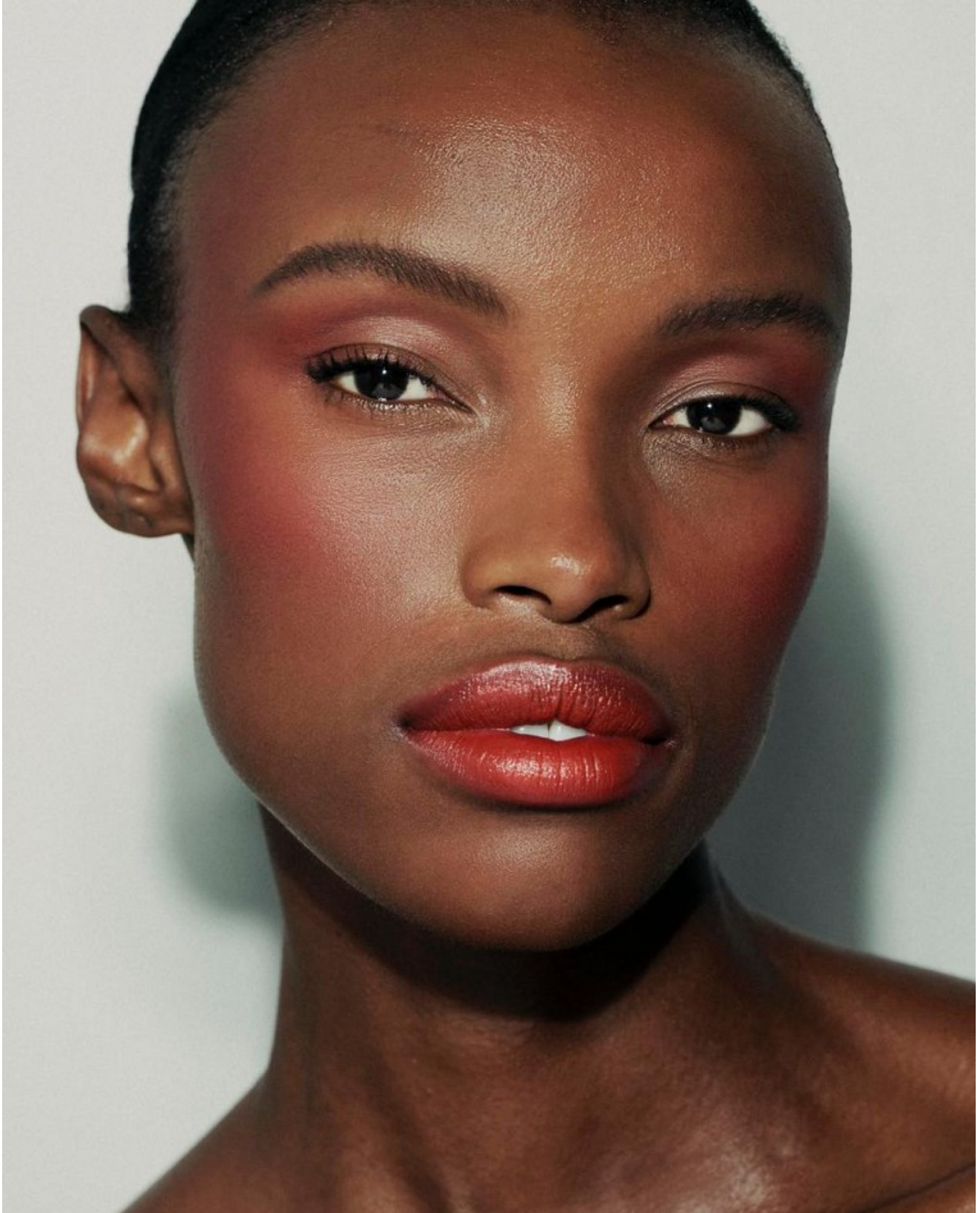


NONDI BEATTIE

Height: 175cm Bust: 80cm Waist: 63cm Hips: 92cm Shoe: 7 UK Hair: Dark Brown Eyes: Brown

BOSS MODELS

CAPE TOWN



NONDI BEATTIE

Height: 175cm Bust: 80cm Waist: 63cm Hips: 92cm Shoe: 7 UK Hair: Dark Brown Eyes: Brown

BOSS MODELS

CAPE TOWN

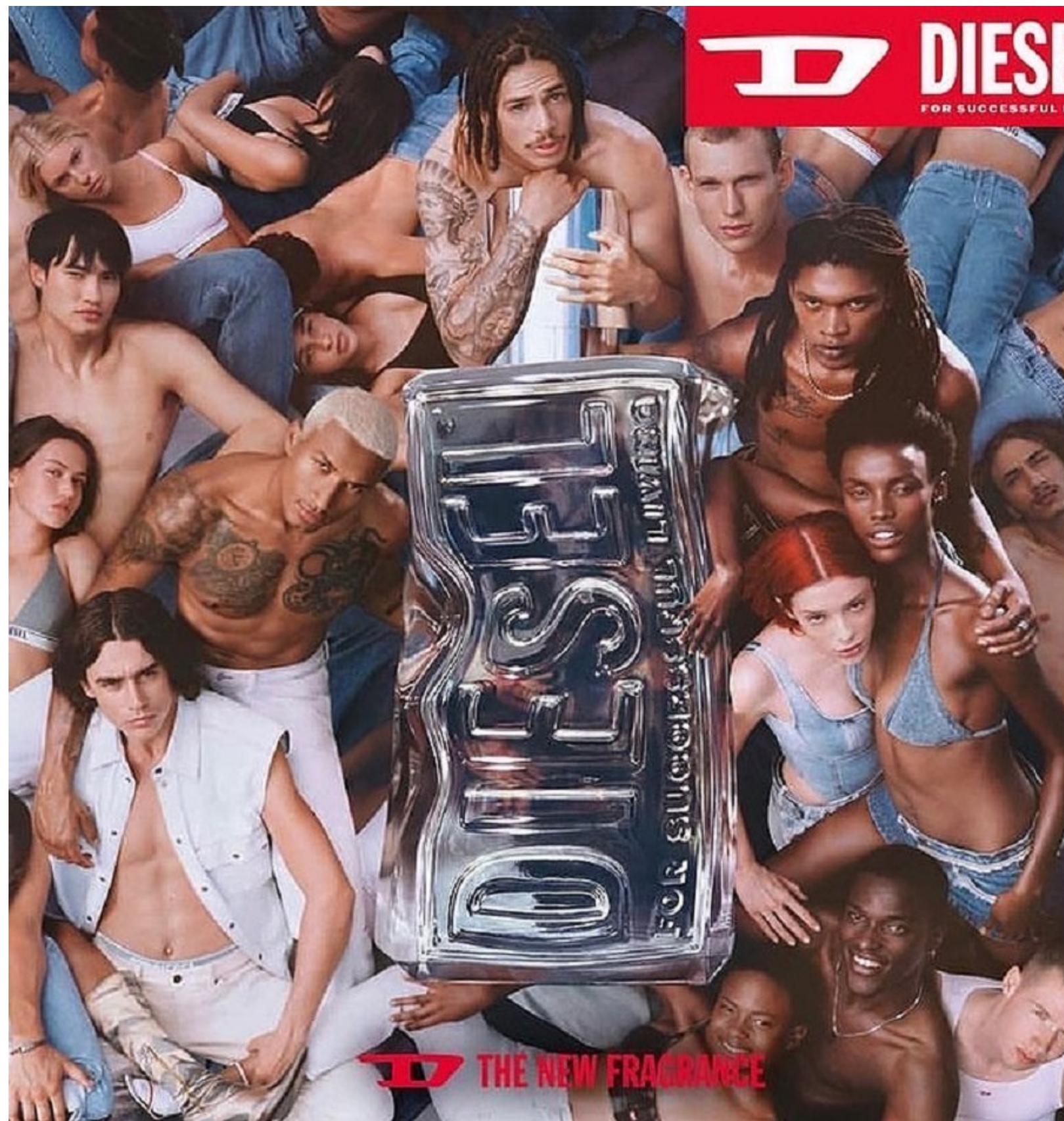


NONDI BEATTIE

Height: 175cm Bust: 80cm Waist: 63cm Hips: 92cm Shoe: 7 UK Hair: Dark Brown Eyes: Brown

BOSS MODELS

CAPE TOWN



NONDI BEATTIE

Height: 175cm Bust: 80cm Waist: 63cm Hips: 92cm Shoe: 7 UK Hair: Dark Brown Eyes: Brown

BOSS MODELS

CAPE TOWN



NONDI BEATTIE

Height: 175cm Bust: 80cm Waist: 63cm Hips: 92cm Shoe: 7 UK Hair: Dark Brown Eyes: Brown