

# BOSS MODELS

CAPE TOWN



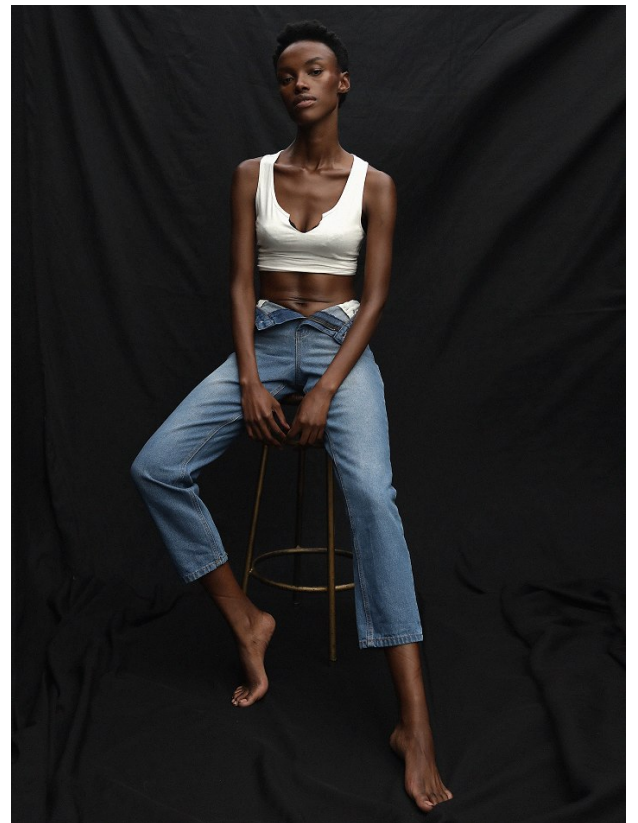
**NONDI BEATTIE**

Height: 175cm Bust: 81cm Waist: 66cm Hips: 96cm Shoe: 7 UK Hair: Dark Brown Eyes: Brown



# BOSS MODELS

CAPE TOWN



## NONDI BEATTIE

Height: 175cm Bust: 81cm Waist: 66cm Hips: 96cm Shoe: 7 UK Hair: Dark Brown Eyes: Brown



# BOSS MODELS

CAPE TOWN



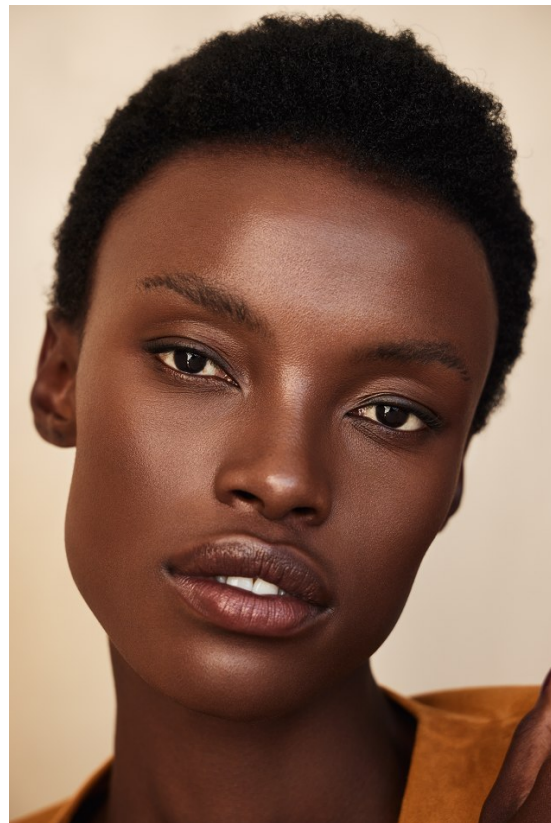
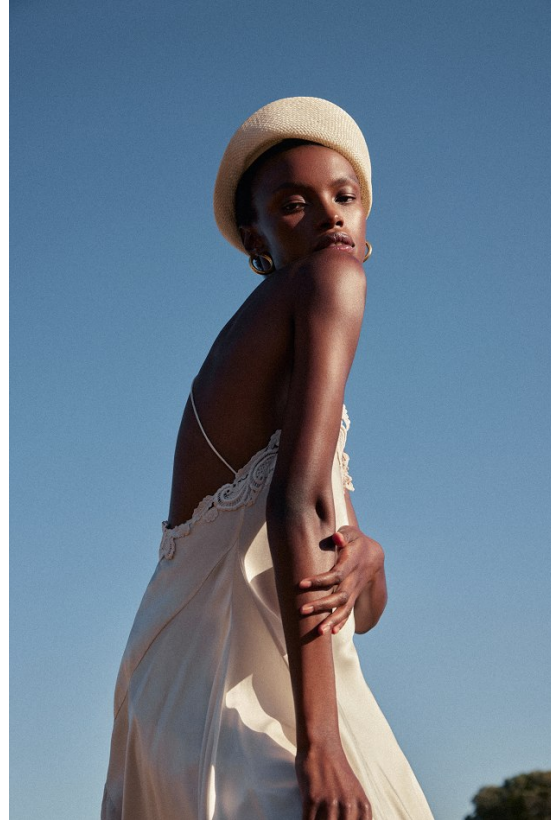
NONDI BEATTIE

Height: 175cm Bust: 81cm Waist: 66cm Hips: 96cm Shoe: 7 UK Hair: Dark Brown Eyes: Brown



# BOSS MODELS

CAPE TOWN



NONDI BEATTIE

Height: 175cm Bust: 81cm Waist: 66cm Hips: 96cm Shoe: 7 UK Hair: Dark Brown Eyes: Brown



# BOSS MODELS

CAPE TOWN



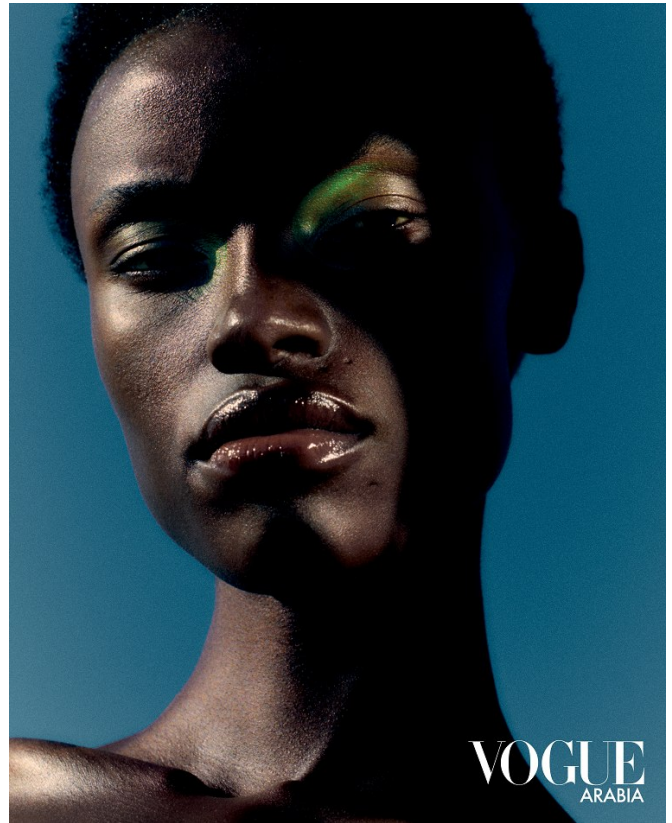
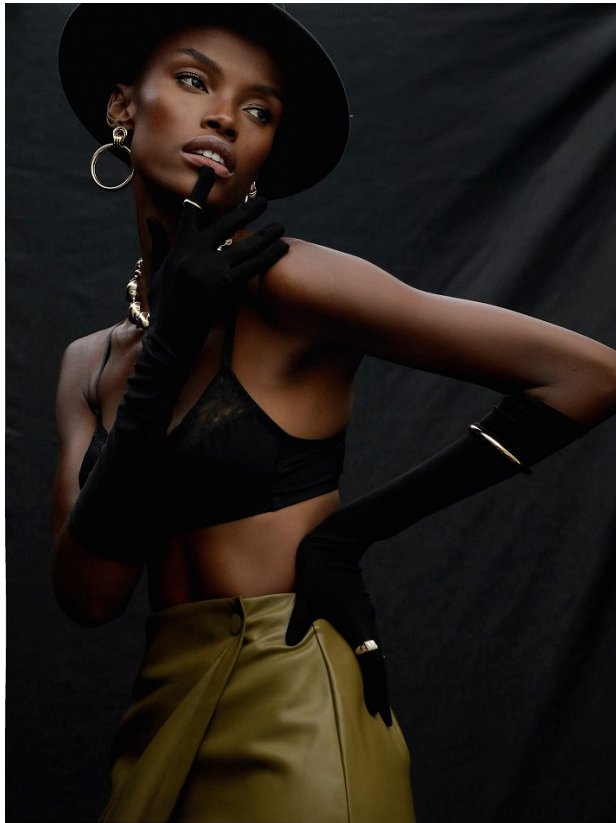
## NONDI BEATTIE

Height: 175cm Bust: 81cm Waist: 66cm Hips: 96cm Shoe: 7 UK Hair: Dark Brown Eyes: Brown



# BOSS MODELS

CAPE TOWN



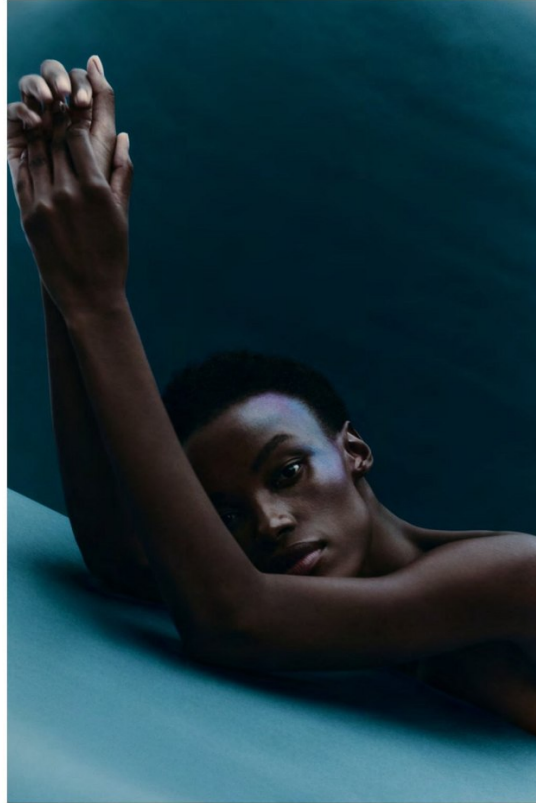
VOGUE  
ARABIA

NONDI BEATTIE

Height: 175cm Bust: 81cm Waist: 66cm Hips: 96cm Shoe: 7 UK Hair: Dark Brown Eyes: Brown

# BOSS MODELS

CAPE TOWN



NONDI BEATTIE

Height: 175cm Bust: 81cm Waist: 66cm Hips: 96cm Shoe: 7 UK Hair: Dark Brown Eyes: Brown



# BOSS MODELS

CAPE TOWN



NONDI BEATTIE

Height: 175cm Bust: 81cm Waist: 66cm Hips: 96cm Shoe: 7 UK Hair: Dark Brown Eyes: Brown



# BOSS MODELS

CAPE TOWN



NONDI BEATTIE

Height: 175cm Bust: 81cm Waist: 66cm Hips: 96cm Shoe: 7 UK Hair: Dark Brown Eyes: Brown



# BOSS MODELS

CAPE TOWN



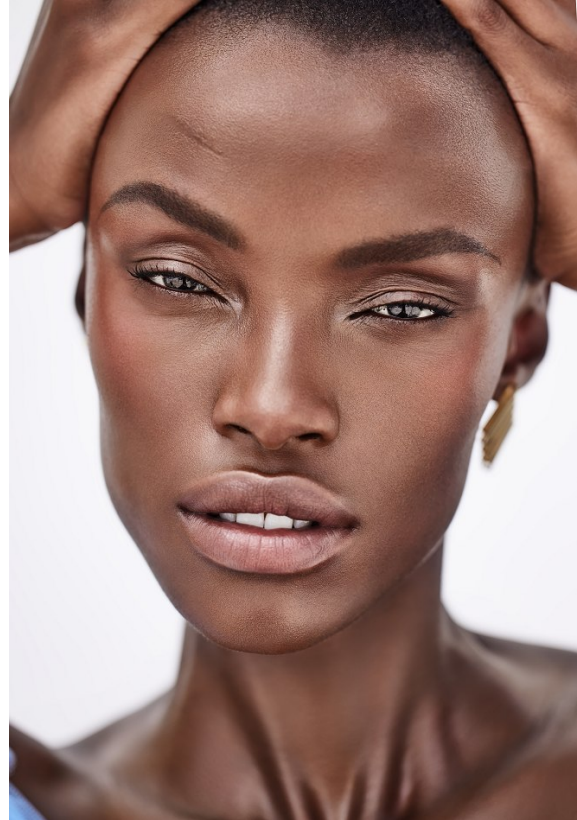
## NONDI BEATTIE

Height: 175cm Bust: 81cm Waist: 66cm Hips: 96cm Shoe: 7 UK Hair: Dark Brown Eyes: Brown



# BOSS MODELS

CAPE TOWN



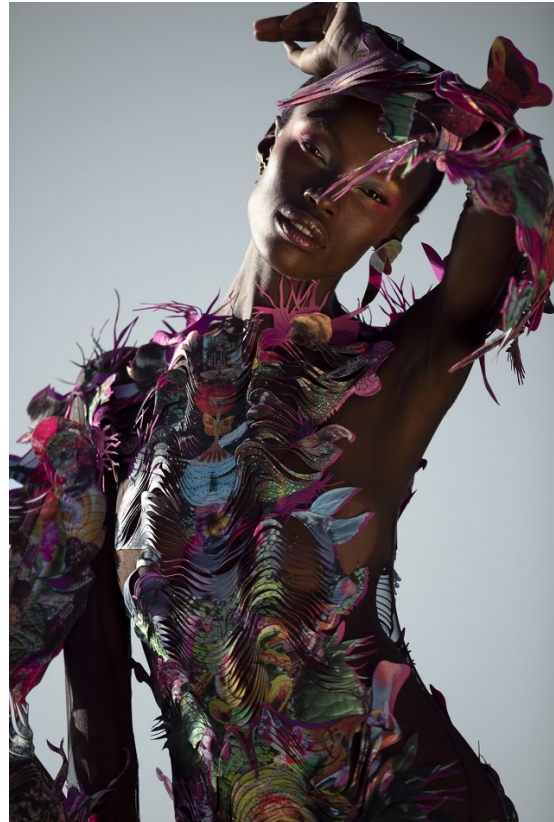
**NONDI BEATTIE**

Height: 175cm Bust: 81cm Waist: 66cm Hips: 96cm Shoe: 7 UK Hair: Dark Brown Eyes: Brown



# BOSS MODELS

CAPE TOWN



NONDI BEATTIE

Height: 175cm Bust: 81cm Waist: 66cm Hips: 96cm Shoe: 7 UK Hair: Dark Brown Eyes: Brown



# BOSS MODELS

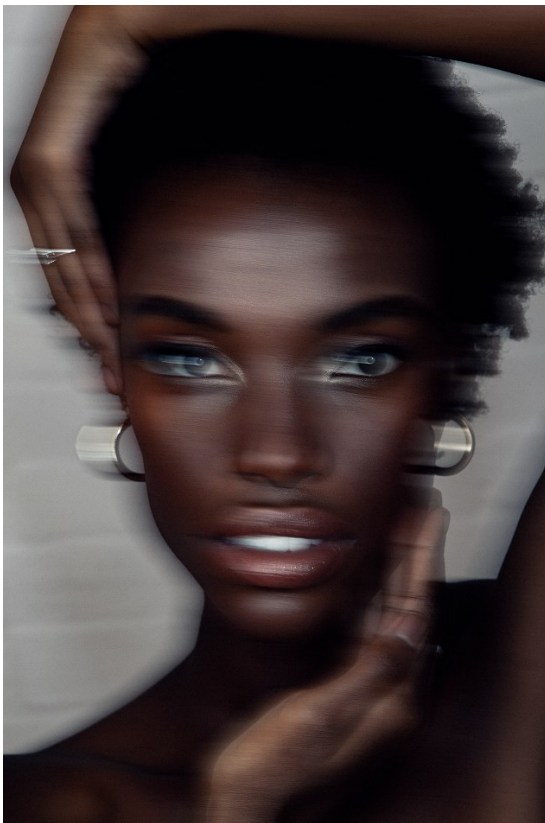
CAPE TOWN



**LINKE SEITE:** Seidenmantel, um 3290 €. Hemd-Blusenkleid mit Meerjungfrauenschwanz aus Baumwollseide, um 3290 €. Bandes von FRED. Loafer: Roger Vivier. Schmuck: Ring „Gypsy“ Tommaso Canali.

**DIESE SEITE:** Blazer und Hose aus Gabardine-Volle. Bluse aus Popeline. Alles von BOSS & GABRIANA. P. o. A. Zylinder: Nicki Marquardt. Schmuck: Swarovski. Scherhe: Dolce & Gabbana

Model: Nondi Beattie/  
Boss Models. Makeup:  
Campbell. Hair/Art:  
Deppierment. Haare: Anja  
Fichtenmay/Les Artistes.  
Produktion und Casting:  
North South Productions.  
Stylingassistent: Tinka  
Vollste Knoll



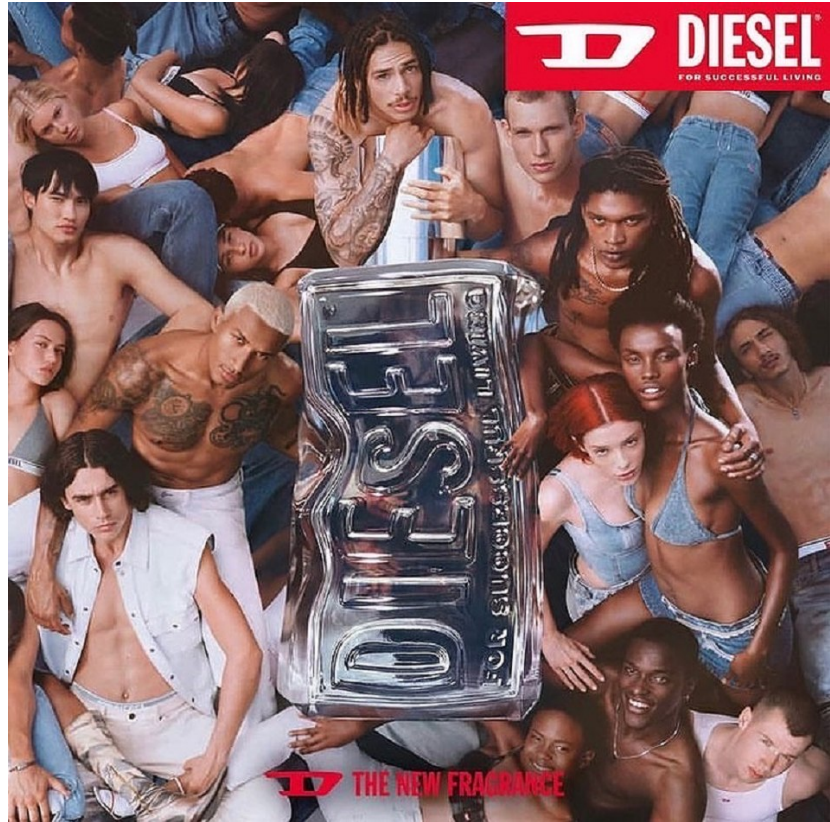
NONDI BEATTIE

Height: 175cm Bust: 81cm Waist: 66cm Hips: 96cm Shoe: 7 UK Hair: Dark Brown Eyes: Brown



# BOSS MODELS

CAPE TOWN



## NONDI BEATTIE

Height: 175cm Bust: 81cm Waist: 66cm Hips: 96cm Shoe: 7 UK Hair: Dark Brown Eyes: Brown