

# BOSS MODELS

CAPE TOWN

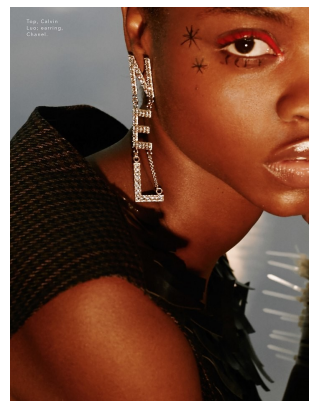
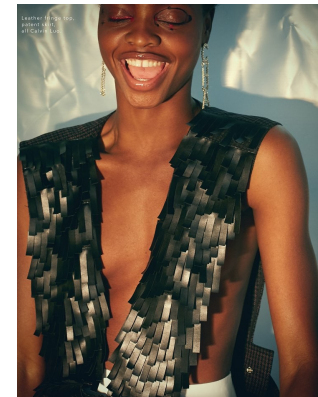
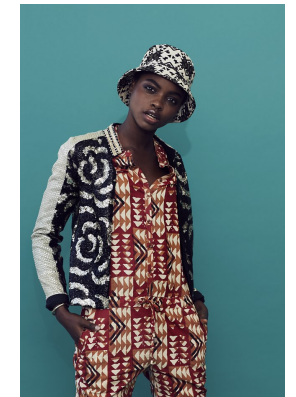
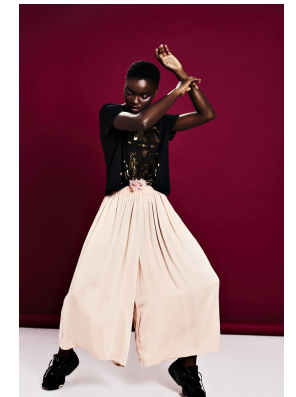


issey Miyake.com

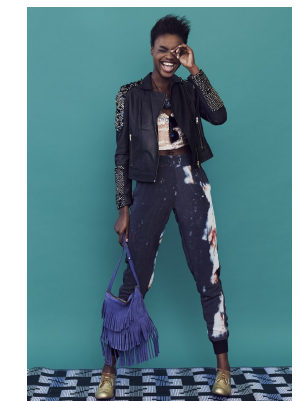
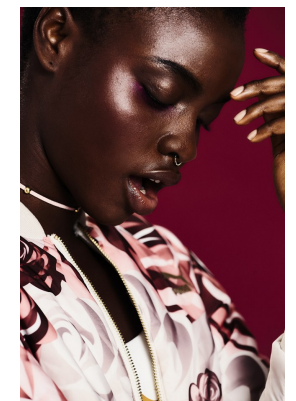


issey Miyake.com

ISSEY MIYAKE



POPPY KAYE  
Dressing up iconic pieces  
I couldn't resist the iconic pieces  
of Poppy Kaye. She's a real  
diva. She's got that classic  
look that's always been  
there. She's got that classic  
look that's always been  
there. She's got that classic  
look that's always been  
there.

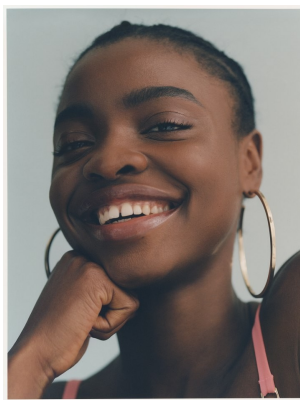
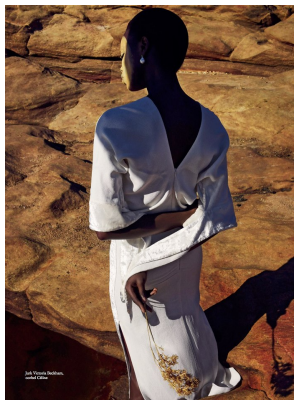
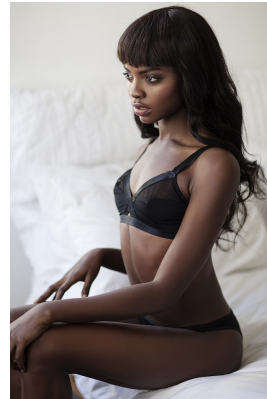


## MIDE OGUNDELE

Height: 178cm Bust: 85cm Waist: 64cm Hips: 90cm Shoe: 7 UK Hair: Black Eyes: Brown

# BOSS MODELS

CAPE TOWN



## MIDE OGUNDELE

Height: 178cm Bust: 85cm Waist: 64cm Hips: 90cm Shoe: 7 UK Hair: Black Eyes: Brown