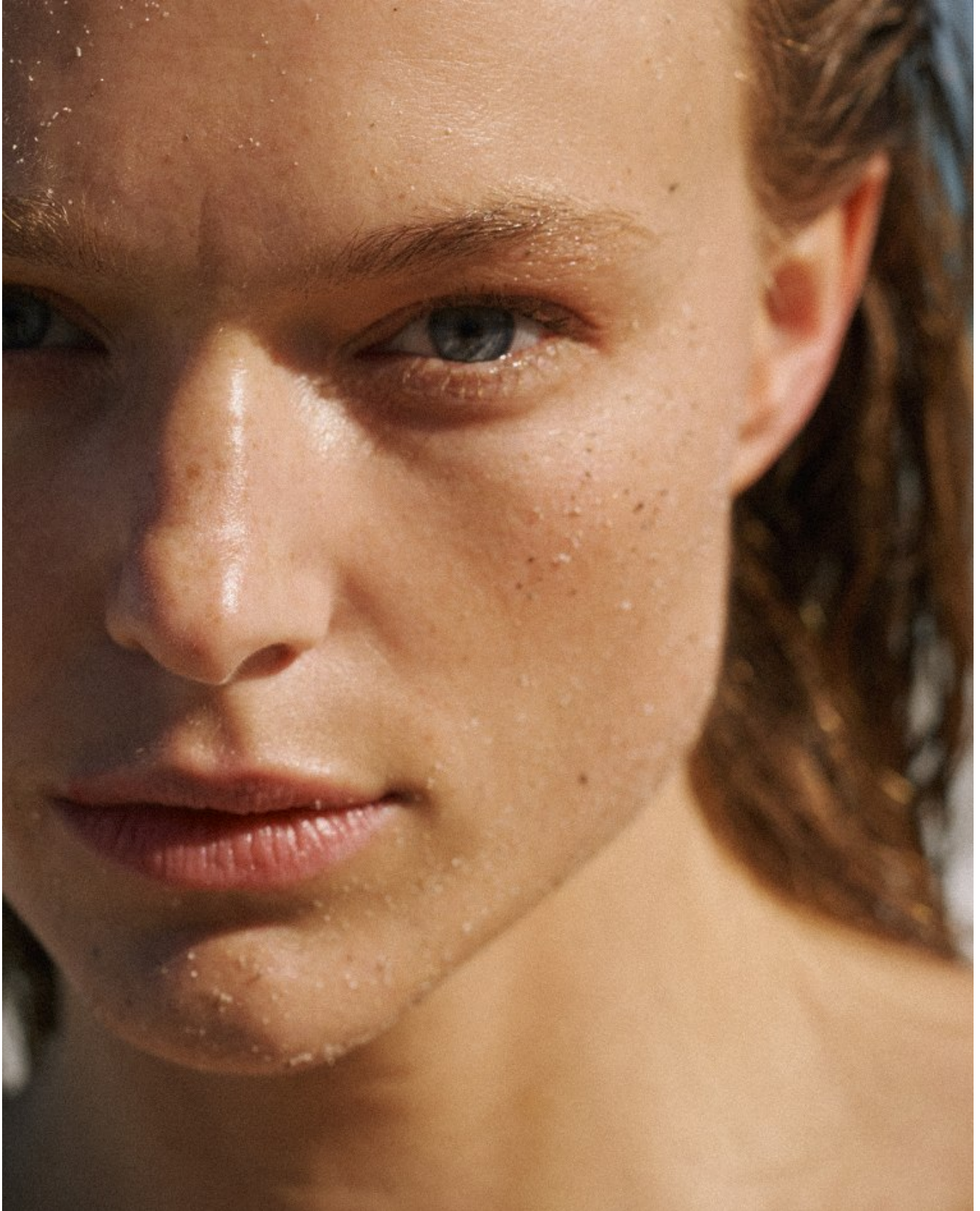


# BOSS MODELS

CAPE TOWN



**ANAIS GARNIER**

Height: 175cm Bust: 89cm Waist: 60cm Hips: 94cm Shoe: 6 UK Hair: Blonde Eyes: Blue/Grey



# BOSS MODELS

CAPE TOWN

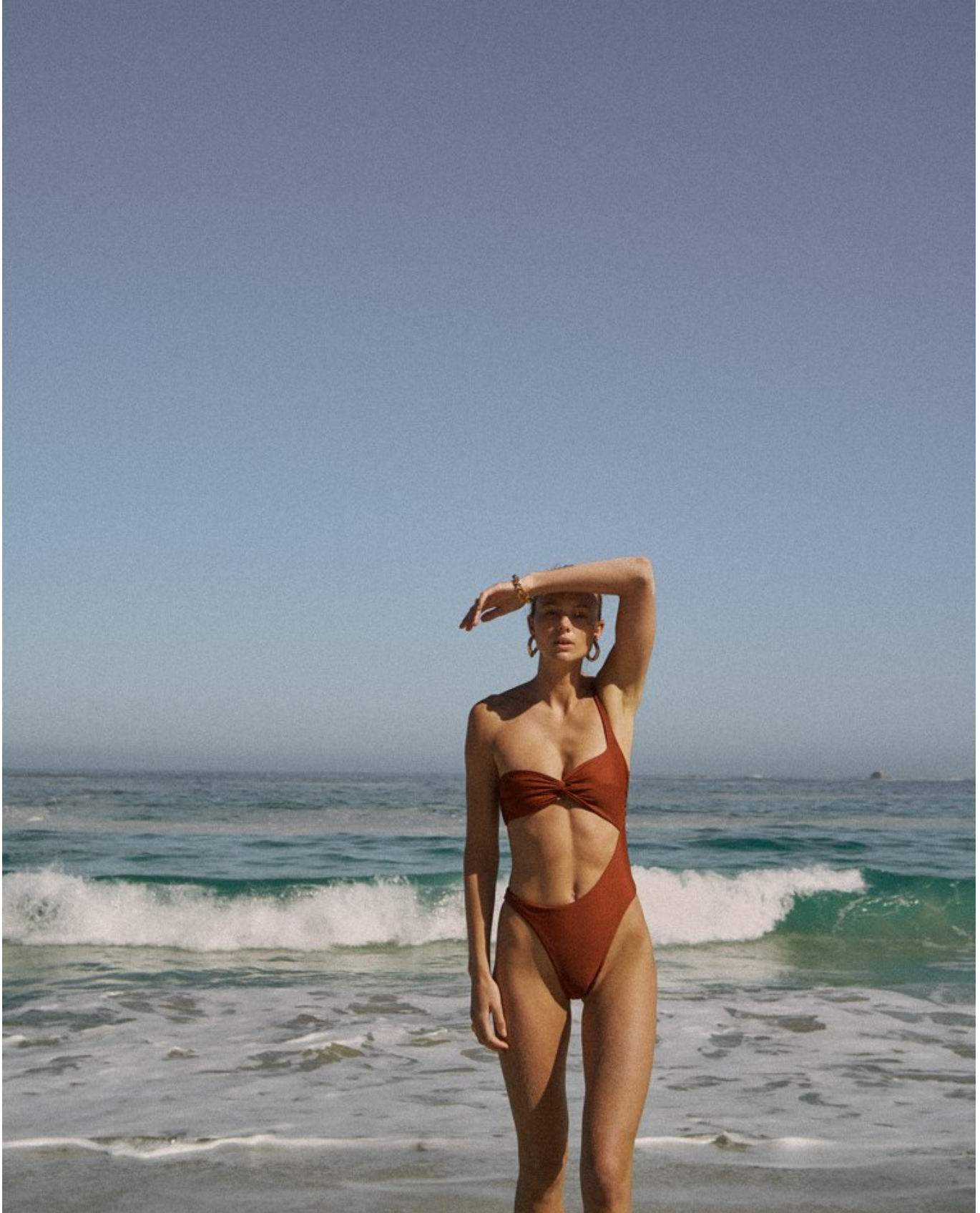


**ANAIS GARNIER**

Height: 175cm Bust: 89cm Waist: 60cm Hips: 94cm Shoe: 6 UK Hair: Blonde Eyes: Blue/Grey

# BOSS MODELS

CAPE TOWN



**ANAIS GARNIER**

Height: 175cm Bust: 89cm Waist: 60cm Hips: 94cm Shoe: 6 UK Hair: Blonde Eyes: Blue/Grey



# BOSS MODELS

CAPE TOWN



ANAIS GARNIER

Height: 175cm Bust: 89cm Waist: 60cm Hips: 94cm Shoe: 6 UK Hair: Blonde Eyes: Blue/Grey



# BOSS MODELS

CAPE TOWN



ANAIS GARNIER

Height: 175cm Bust: 89cm Waist: 60cm Hips: 94cm Shoe: 6 UK Hair: Blonde Eyes: Blue/Grey



# BOSS MODELS

CAPE TOWN



ANAIS GARNIER

Height: 175cm Bust: 89cm Waist: 60cm Hips: 94cm Shoe: 6 UK Hair: Blonde Eyes: Blue/Grey

# BOSS MODELS

CAPE TOWN



ANAIS GARNIER

Height: 175cm Bust: 89cm Waist: 60cm Hips: 94cm Shoe: 6 UK Hair: Blonde Eyes: Blue/Grey



# BOSS MODELS

CAPE TOWN



ANAIIS GARNIER

Height: 175cm Bust: 89cm Waist: 60cm Hips: 94cm Shoe: 6 UK Hair: Blonde Eyes: Blue/Grey



# BOSS MODELS

CAPE TOWN



**ANAIS GARNIER**

Height: 175cm Bust: 89cm Waist: 60cm Hips: 94cm Shoe: 6 UK Hair: Blonde Eyes: Blue/Grey

# BOSS MODELS

CAPE TOWN



Blondebluse fra KINGA MATHE

Produktion: Winteler Production  
Makeup: Kerstin Hajdu /  
Utschi Rabe Agency  
Modell: Anais Garnier /  
Promod Agency  
Digitalassistent:  
Corinne Wenger

**ANAIS GARNIER**

Height: 175cm Bust: 89cm Waist: 60cm Hips: 94cm Shoe: 6 UK Hair: Blonde Eyes: Blue/Grey



# BOSS MODELS

CAPE TOWN



ANAIS GARNIER

Height: 175cm Bust: 89cm Waist: 60cm Hips: 94cm Shoe: 6 UK Hair: Blonde Eyes: Blue/Grey



# BOSS MODELS

CAPE TOWN



BELGIË

MIDNIGHT  
IN PARIS  
MIJN MYSTERY  
DATE MET  
EEN FILMSTER

BELGIE - MA  
MAANDBL

DE TREND  
VAN AMERICA  
TOT NINETI

ROADTRIPP  
IN HET WIL  
WESTEN

MODE

DE ULTIEME  
STIJLGIDS  
VOOR DE ZOMER



ANAIIS GARNIER

Height: 175cm Bust: 89cm Waist: 60cm Hips: 94cm Shoe: 6 UK Hair: Blonde Eyes: Blue/Grey



# BOSS MODELS

CAPE TOWN



*Jersey de **Sandro**,  
pendientes de  
**Aristocrazy** y bikini  
de **Bohodot**.*

*En la siguiente página,  
jersey de **Marella**;  
top de bikini, de  
**Bohodot**; bañador  
blanco de **Eres**;  
bermuda de piel, de  
**Aeron**; y gorro de  
**Yerse**.*

**ANAIS GARNIER**

Height: 175cm Bust: 89cm Waist: 60cm Hips: 94cm Shoe: 6 UK Hair: Blonde Eyes: Blue/Grey

# BOSS MODELS

CAPE TOWN



## Con el viento A FAVOR

En busca de la ola perfecta,  
la *estética surfera* revisa sus raíces  
deportivas para coquetear con  
la feminidad y la *sofisticación*.

Fotografía: Jonathan SEGADE

Estilismo: Sara BASCUÑÁN

### ANAIS GARNIER

Height: 175cm Bust: 89cm Waist: 60cm Hips: 94cm Shoe: 6 UK Hair: Blonde Eyes: Blue/Grey



# BOSS MODELS

CAPE TOWN



ANAIS GARNIER

Height: 175cm Bust: 89cm Waist: 60cm Hips: 94cm Shoe: 6 UK Hair: Blonde Eyes: Blue/Grey

# BOSS MODELS

CAPE TOWN



ANAIS GARNIER

Height: 175cm Bust: 89cm Waist: 60cm Hips: 94cm Shoe: 6 UK Hair: Blonde Eyes: Blue/Grey



# BOSS MODELS

CAPE TOWN



Pet VANS € 35  
Blouse ISABEL MARANT € 620  
Surfpak via SIDI-KAOUKI SURF  
Ketting BY10AK € 74,95  
Corbel DIOR € 310

ANAIIS GARNIER

Height: 175cm Bust: 89cm Waist: 60cm Hips: 94cm Shoe: 6 UK Hair: Blonde Eyes: Blue/Grey

# BOSS MODELS

CAPE TOWN



**ANAIS GARNIER**

Height: 175cm Bust: 89cm Waist: 60cm Hips: 94cm Shoe: 6 UK Hair: Blonde Eyes: Blue/Grey



# BOSS MODELS

CAPE TOWN



ANAIS GARNIER

Height: 175cm Bust: 89cm Waist: 60cm Hips: 94cm Shoe: 6 UK Hair: Blonde Eyes: Blue/Grey

# BOSS MODELS

CAPE TOWN



**ANAIS GARNIER**

Height: 175cm Bust: 89cm Waist: 60cm Hips: 94cm Shoe: 6 UK Hair: Blonde Eyes: Blue/Grey



# BOSS MODELS

CAPE TOWN



ANAIS GARNIER

Height: 175cm Bust: 89cm Waist: 60cm Hips: 94cm Shoe: 6 UK Hair: Blonde Eyes: Blue/Grey

# BOSS MODELS

CAPE TOWN



ANAIS GARNIER

Height: 175cm Bust: 89cm Waist: 60cm Hips: 94cm Shoe: 6 UK Hair: Blonde Eyes: Blue/Grey