

BOSS MODELS

CAPE TOWN



VICTORIA PLUM

Height: 173cm Bust: 83cm Waist: 60cm Hips: 90cm Shoe: 5 UK Hair: Ash Blonde Eyes: Blue/Green

BOSS MODELS

CAPE TOWN



VICTORIA PLUM

Height: 173cm Bust: 83cm Waist: 60cm Hips: 90cm Shoe: 5 UK Hair: Ash Blonde Eyes: Blue/Green

BOSS MODELS

CAPE TOWN



VICTORIA PLUM

Height: 173cm Bust: 83cm Waist: 60cm Hips: 90cm Shoe: 5 UK Hair: Ash Blonde Eyes: Blue/Green

BOSS MODELS

CAPE TOWN



VICTORIA PLUM

Height: 173cm Bust: 83cm Waist: 60cm Hips: 90cm Shoe: 5 UK Hair: Ash Blonde Eyes: Blue/Green

BOSS MODELS

CAPE TOWN



VICTORIA PLUM

Height: 173cm Bust: 83cm Waist: 60cm Hips: 90cm Shoe: 5 UK Hair: Ash Blonde Eyes: Blue/Green

BOSS MODELS

CAPE TOWN



VICTORIA PLUM

Height: 173cm Bust: 83cm Waist: 60cm Hips: 90cm Shoe: 5 UK Hair: Ash Blonde Eyes: Blue/Green

BOSS MODELS

CAPE TOWN



VICTORIA PLUM

Height: 173cm Bust: 83cm Waist: 60cm Hips: 90cm Shoe: 5 UK Hair: Ash Blonde Eyes: Blue/Green

BOSS MODELS

CAPE TOWN



BEAUTY

ΦΡΟΝΤΙΔΑ

SKIN IQ

Το δέρμα μας είναι ένα συναρπαστικό, πολύπλοκο όργανο με νοημοσύνη. Και το μυστικό για τη σωστή φροντίδα του είναι να ακολουθήσουμε τα σημάδια που μας δίνει. Αρκεί πρώτα να τα προσέξουμε!

Από την ΕΣΤΑ ΠΑΛΑΚΟΚΕΦΑΛΟΥ Φωτογραφίες RENE DUPONT

106 MARIECLAIRE GR Οκτώβριος 2019

Οκτώβριος 2019 MARIECLAIRE GR 107

VICTORIA PLUM

Height: 173cm Bust: 83cm Waist: 60cm Hips: 90cm Shoe: 5 UK Hair: Ash Blonde Eyes: Blue/Green

BOSS MODELS

CAPE TOWN



Victoria (left) wears Jumpsuit, \$569,
Pneuc, www.pneuc.com; top,
\$29.95; jeans, (02) 9276 7600; shoes,
\$229; Dr Martens, 1800 658 134
(worn throughout); ring, \$1,900,
Tiffany & Co, tiffany.com.au

Jet (centre) wears Jumpsuit, \$4,150, top,
\$610, both Burberry, au.burberry.com;
necklace, \$19,000, Tiffany & Co,
tiffany.com.au (worn throughout)

Himali wears Jumpsuit, \$1,745,
Max Mara, maxmara.com; top,
\$670, Ellery, ellery.com

Opposite page: Emsey (left) wears
Jacket, \$5,615, pants, \$3,320, hand
cuff (worn throughout), \$530, all
Gucci, gucci.com/au

Martine wears Coat, \$5,390, pants,
\$2,390, shoes \$1,000, necklace, \$1,000,
all Civenchy, (02) 8197 0425; hand
cuff, \$465, Gucci, gucci.com/au
(worn throughout)



Stair, \$791, Mia Mia,
(02) 9223 1888; hat, \$110,
Fallen Broken Street,
fallenbrokenstreet.com

Opposite page: Himali wears
Dress, \$5,690, boots, \$1,680, both
Celine, (01) 9530 4300; necklace,
\$1,150, Bally, 1800 781 851;
on model's left hand: cuff,
\$550, Gucci, gucci.com/au
(worn throughout); on model's
right hand: (from left) ring,
\$1,900, ring, \$2,950, both
Tiffany & Co, tiffany.com.au

Emsey wears Jacket, \$2,390,
pants, \$1,450, ladders, \$895,
all Bally, 1800 781 851

VICTORIA PLUM

Height: 173cm Bust: 83cm Waist: 60cm Hips: 90cm Shoe: 5 UK Hair: Ash Blonde Eyes: Blue/Green

BOSS MODELS

CAPE TOWN



VICTORIA PLUM

Height: 173cm Bust: 83cm Waist: 60cm Hips: 90cm Shoe: 5 UK Hair: Ash Blonde Eyes: Blue/Green

BOSS MODELS

CAPE TOWN



VICTORIA PLUM

Height: 173cm Bust: 83cm Waist: 60cm Hips: 90cm Shoe: 5 UK Hair: Ash Blonde Eyes: Blue/Green

BOSS MODELS

CAPE TOWN

imagista



DAY FOR NIGHT

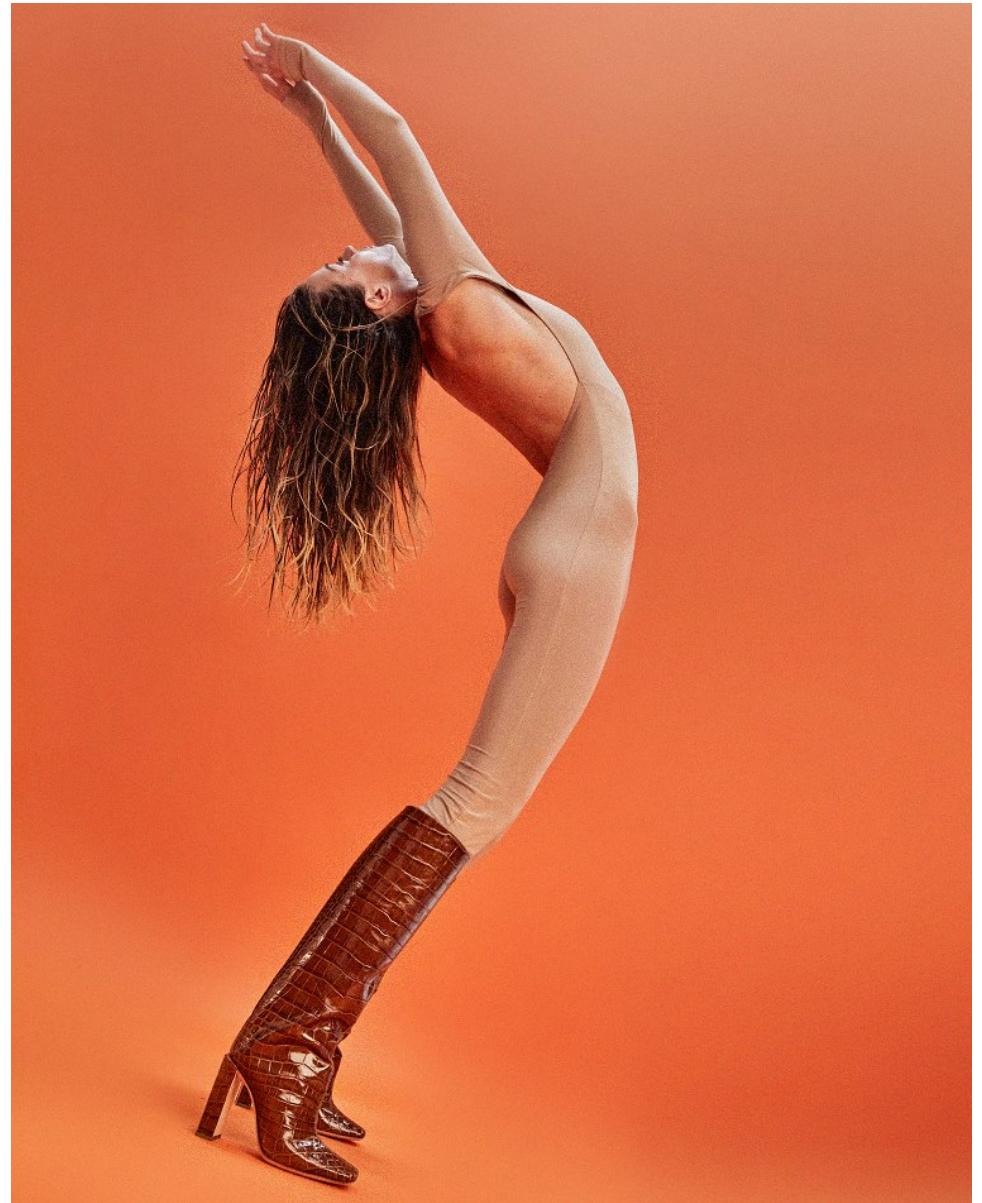


VICTORIA PLUM

Height: 173cm Bust: 83cm Waist: 60cm Hips: 90cm Shoe: 5 UK Hair: Ash Blonde Eyes: Blue/Green

BOSS MODELS

CAPE TOWN



VICTORIA PLUM

Height: 173cm Bust: 83cm Waist: 60cm Hips: 90cm Shoe: 5 UK Hair: Ash Blonde Eyes: Blue/Green

BOSS MODELS

CAPE TOWN



VICTORIA PLUM

Height: 173cm Bust: 83cm Waist: 60cm Hips: 90cm Shoe: 5 UK Hair: Ash Blonde Eyes: Blue/Green

BOSS MODELS

CAPE TOWN



VICTORIA PLUM

Height: 173cm Bust: 83cm Waist: 60cm Hips: 90cm Shoe: 5 UK Hair: Ash Blonde Eyes: Blue/Green

BOSS MODELS

CAPE TOWN



VICTORIA PLUM

Height: 173cm Bust: 83cm Waist: 60cm Hips: 90cm Shoe: 5 UK Hair: Ash Blonde Eyes: Blue/Green

BOSS MODELS

CAPE TOWN



VICTORIA PLUM

Height: 173cm Bust: 83cm Waist: 60cm Hips: 90cm Shoe: 5 UK Hair: Ash Blonde Eyes: Blue/Green