

# BOSS MODELS

CAPE TOWN



DABERECHI UKOHA- KALU

Height: 175cm Bust: 74cm Waist: 64cm Hips: 90cm Shoe: 8 UK Hair: Black Eyes: Brown

# BOSS MODELS

CAPE TOWN



4096400715/



## DABERECHI UKOHA- KALU

Height: 175cm Bust: 74cm Waist: 64cm Hips: 90cm Shoe: 8 UK Hair: Black Eyes: Brown



# BOSS MODELS

CAPE TOWN



DABERECHI UKOHA- KALU

Height: 175cm Bust: 74cm Waist: 64cm Hips: 90cm Shoe: 8 UK Hair: Black Eyes: Brown



# BOSS MODELS

CAPE TOWN



DABERECHI UKOHA- KALU

Height: 175cm Bust: 74cm Waist: 64cm Hips: 90cm Shoe: 8 UK Hair: Black Eyes: Brown



# BOSS MODELS

CAPE TOWN



## DABERECHI UKOHA- KALU

Height: 175cm Bust: 74cm Waist: 64cm Hips: 90cm Shoe: 8 UK Hair: Black Eyes: Brown



# BOSS MODELS

CAPE TOWN



Winter Whites

AN ALL-WHITE MONOCHROME LOOK + WHITE BOOTIES = AN EFFORTLESS, CRISP FASHION FORMULA.

Polo-neck top R169, FOREVER 21, Shirt R2 099, CALVIN KLEIN, Jeans R399, COTTON ON, Boots R1499, STEVE MADDEN

FASHION INTERN LESEGO MTSOONGO  
HAIR MARY GOUVEIA  
MAKEUP KELLY PAITAKI/GLOSS ARTIST MANAGEMENT (USING CHANEL LES BEIGES 2018 COLLECTION)  
MODEL DABERECHI AT BOSS MODELS  
PRICES CORRECT AT TIME OF GOING TO PRESS  
STOCKISTS ON PAGE 119



Graphic Mashup

ADD A PINCH OF PUNCH WITH A FUSION OF ECLECTIC PRINTS AND STRIKING HUES.

Polo-neck top R399, OLD KHAKI, Jersey R650, BABBETTE, Skirt R650, CHER DREYER, Clamers R940, THE LOT, Bag R649, CHARLES & KEITH

DABERECHI UKOHA- KALU

Height: 175cm Bust: 74cm Waist: 64cm Hips: 90cm Shoe: 8 UK Hair: Black Eyes: Brown



# BOSS MODELS

CAPE TOWN

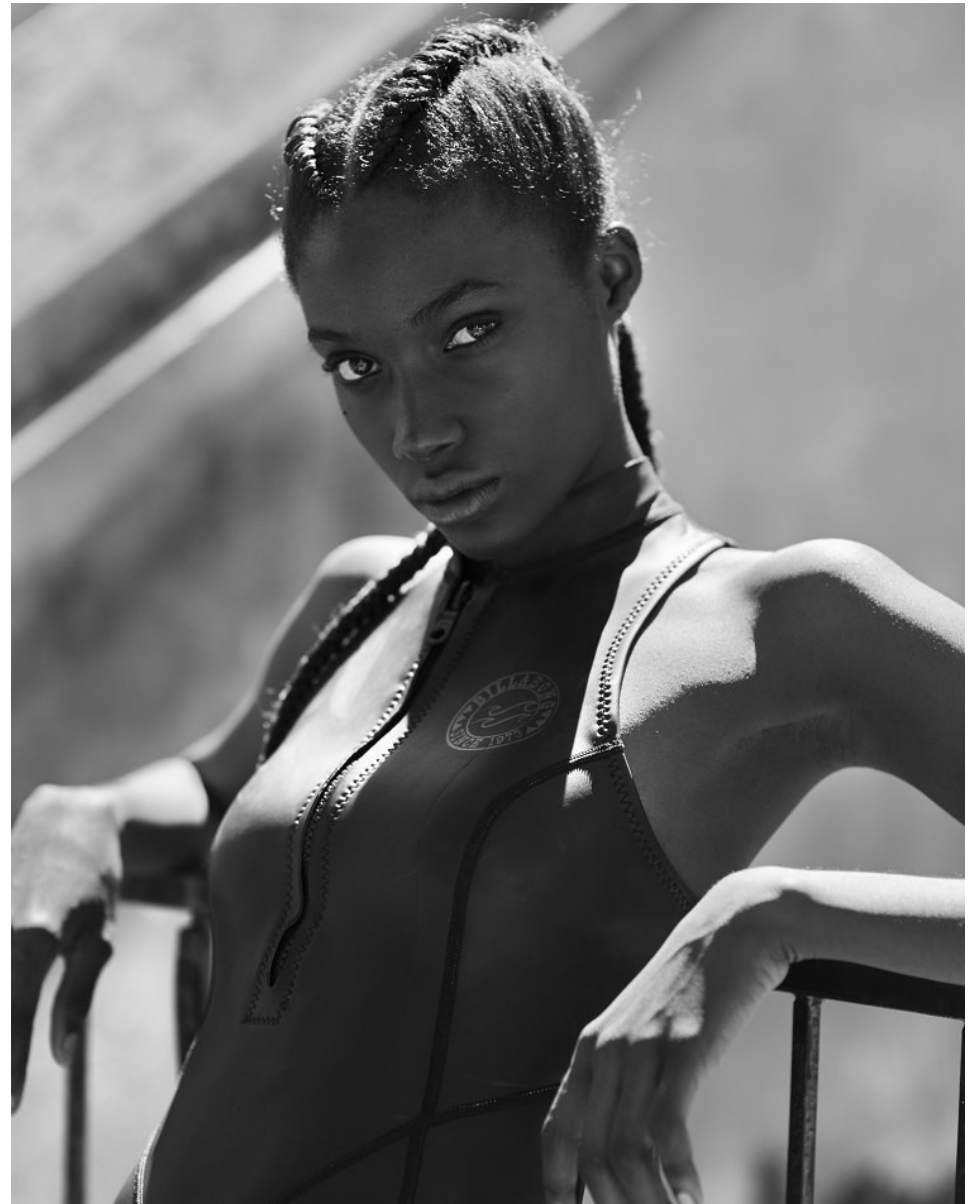


DABERECHI UKOHA- KALU

Height: 175cm Bust: 74cm Waist: 64cm Hips: 90cm Shoe: 8 UK Hair: Black Eyes: Brown

# BOSS MODELS

CAPE TOWN



DABERECHI UKOHA- KALU

Height: 175cm Bust: 74cm Waist: 64cm Hips: 90cm Shoe: 8 UK Hair: Black Eyes: Brown



# BOSS MODELS

CAPE TOWN



## METALHEADS

This season, metallics are so vibrant you won't be able to miss them. It's about a look towards futurism and of course, optimism.

Silver faux fur jacket, R8 995, and navy pearl jacket, R6 995, both Michael Kors

*The  
A/W  
trend  
edit*

It's a new season and we've packed in the trends you need to try



## DABERECHI UKOHA- KALU

Height: 175cm Bust: 74cm Waist: 64cm Hips: 90cm Shoe: 8 UK Hair: Black Eyes: Brown



# BOSS MODELS

CAPE TOWN



## DABERECHI UKOHA- KALU

Height: 175cm Bust: 74cm Waist: 64cm Hips: 90cm Shoe: 8 UK Hair: Black Eyes: Brown



# BOSS MODELS

CAPE TOWN



## GRAPHIC & MONOCHROMATIC

Logos, expressive words and bold shapes in anything-but-boring black and white make for one bold statement.

Black-and-white jersey, R329, and leggings, R749, both H&M; sneakers, R1 099, Superna



## CHECK MATE

Heritage checks are doing the most this winter. Play them up by pairing them with bright colours and modern accessories for a youthful take.

Check sweater, R7 290, blue rain coat, R12 690, and mini bag, R10 790, all Burberry

## DABERECHI UKOHA- KALU

Height: 175cm Bust: 74cm Waist: 64cm Hips: 90cm Shoe: 8 UK Hair: Black Eyes: Brown



# BOSS MODELS

CAPE TOWN



DABERECHI UKOHA- KALU

Height: 175cm Bust: 74cm Waist: 64cm Hips: 90cm Shoe: 8 UK Hair: Black Eyes: Brn



# BOSS MODELS

CAPE TOWN



## DABERECHI UKOHA- KALU

Height: 175cm Bust: 74cm Waist: 64cm Hips: 90cm Shoe: 8 UK Hair: Black Eyes: Brown



# BOSS MODELS

CAPE TOWN



## DABERECHI UKOHA- KALU

Height: 175cm Bust: 74cm Waist: 64cm Hips: 90cm Shoe: 8 UK Hair: Black Eyes: Brown



# BOSS MODELS

CAPE TOWN



**Modern  
Military**

MARCH INTO WINTER  
IN A BOILER SUIT  
WITH A UTILITARIAN  
TWIST. UPDATE IT  
WITH A MOON BAG  
SLUNG LOOSELY OVER  
YOUR SHOULDER.

Boiler suit R2 699, G-STAR  
RAW, Jacket R999, FORESTER  
21, Moon bag R449, SHELF LIFE

Up  
YOUR  
Game  
Winter trends  
to slay the  
season

PHOTOGRAPHY: CLARENCE MONTGOMERY/SUPERNOVA CREATIVE MANAGEMENT  
FASHION: CLARE ROBERTSON

DABERECHI UKOHA- KALU

Height: 175cm Bust: 74cm Waist: 64cm Hips: 90cm Shoe: 8 UK Hair: Black Eyes: Brown

# BOSS MODELS

CAPE TOWN



DABERECHI UKOHA- KALU

Height: 175cm Bust: 74cm Waist: 64cm Hips: 90cm Shoe: 8 UK Hair: Black Eyes: Brown



# BOSS MODELS

CAPE TOWN



## DABERECHI UKOHA- KALU

Height: 175cm Bust: 74cm Waist: 64cm Hips: 90cm Shoe: 8 UK Hair: Black Eyes: Brown



# BOSS MODELS

CAPE TOWN



## DENIM + WRAPPING

Inspired by natural hair guru Lottie Mensah and by Afro hair threading, rapped gold thread allows you to create a three-dimensional look right from the scalp. The length of the thread or ponytail determines the simplicity or complexity of the style.

**BERECHI WEARS**  
TOP: JEANS POR  
T: CALVIN KLEIN  
NS: JERSEY #439  
A: BOOTS #1 999  
GREEN CROSS

**ANYON WEARS**  
T: #1 099 ZARA;  
JACKET #3 299  
**TAR RAW** - JEANS  
#9 CALVIN KLEIN  
S: SHOES #1 099  
SUPERGA



## DABERECHI UKOHA- KALU

Height: 175cm Bust: 74cm Waist: 64cm Hips: 90cm Shoe: 8 UK Hair: Black Eyes: Brown



# BOSS MODELS

CAPE TOWN



DABERECHI UKOHA- KALU

Height: 175cm Bust: 74cm Waist: 64cm Hips: 90cm Shoe: 8 UK Hair: Black Eyes: Brown



# BOSS MODELS

CAPE TOWN



THE BOSS HAM STUDIO  
SELIX PAPER JACKET  
RI 300 BELLI SWAP  
RETTA Q STAR RAW  
BORETTA CRYSTAL  
BIRCH SAPHIRE PAIR  
WITCHERY SNEAKERS  
RI 200 ALDO

## DABERECHI UKOHA- KALU

Height: 175cm Bust: 74cm Waist: 64cm Hips: 90cm Shoe: 8 UK Hair: Black Eyes: Brown



# BOSS MODELS

CAPE TOWN



## STYLE

*Gifts to thrill/cheeky checks/romantic glamour*

Show Mom your appreciation with something special from our bumper Mother's Day gift guide (P20), play it cool and casual in on-trend plaid (P26) and turn heads with romantic glamour from a bygone era (P36).

TOPSHOP EARRINGS R279 | TOPSHOP STACKING RINGS (SET OF 6) R199 | KELSO ELASTICATED WATCH R499 | PHOTOGRAPHY: JANEY CAMERON/AGENCI LEMMA | STYLING: BRITANNY PEREBRE | HAIR AND MAKE-UP: CHERYL PARKER/SUPERNOVA | MODEL: DABERECHI/BOSS

17

34



COLOUR-BLOCKED WRAP R499.95  
KELSO OVERSIZED CHUNKY-KNIT DRESS R399.95  
KELSO STUDDED OVERSIZED BAG R549.95  
KELSO OVER-THE-KNEE BOOTS R699

TOPSHOP DAMANTE DROP EARRINGS R209 | BELT | STYLIST'S OWN

## DABERECHI UKOHA- KALU

Height: 175cm Bust: 74cm Waist: 64cm Hips: 90cm Shoe: 8 UK Hair: Black Eyes: Brown



# BOSS MODELS

CAPE TOWN



## DABERECHI UKOHA- KALU

Height: 175cm Bust: 74cm Waist: 64cm Hips: 90cm Shoe: 8 UK Hair: Black Eyes: Brown



# BOSS MODELS

CAPE TOWN



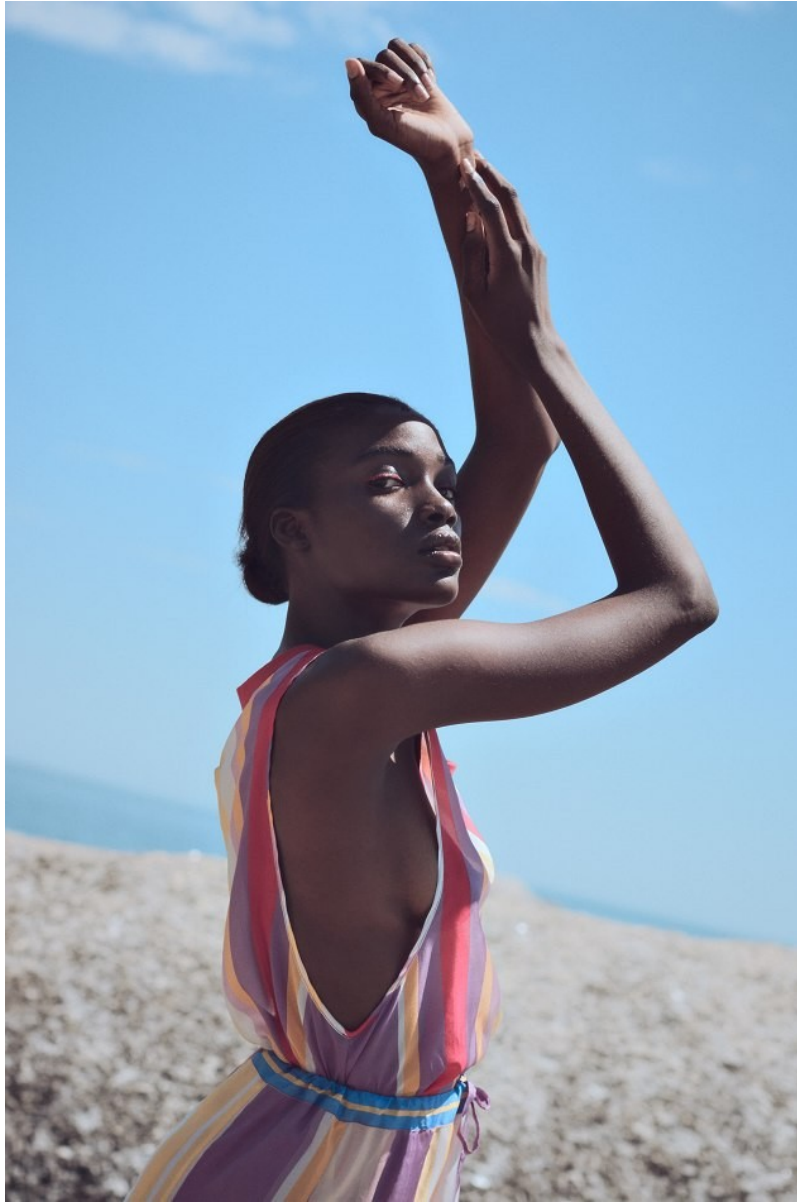
DABERECHI UKOHA- KALU

Height: 175cm Bust: 74cm Waist: 64cm Hips: 90cm Shoe: 8 UK Hair: Black Eyes: Brown



# BOSS MODELS

CAPE TOWN



DABERECHI UKOHA- KALU

Height: 175cm Bust: 74cm Waist: 64cm Hips: 90cm Shoe: 8 UK Hair: Black Eyes: Brown



# BOSS MODELS

CAPE TOWN



DABERECHI UKOHA- KALU

Height: 175cm Bust: 74cm Waist: 64cm Hips: 90cm Shoe: 8 UK Hair: Black Eyes: Brown



# BOSS MODELS

CAPE TOWN



**DABERECHI UKOHA- KALU**

Height: 175cm Bust: 74cm Waist: 64cm Hips: 90cm Shoe: 8 UK Hair: Black Eyes: Brown



# BOSS MODELS

CAPE TOWN



## DABERECHI UKOHA- KALU

Height: 175cm Bust: 74cm Waist: 64cm Hips: 90cm Shoe: 8 UK Hair: Black Eyes: Brown



# BOSS MODELS

CAPE TOWN



**BEAUTY  
NOTE**

Use a cream or gel-base eye colour before generously applying powdered eyeshadow to intensify the look. Try **3INA** The Cream Eyeshadow in 304 R160



**MADE-YOU-LOOK RED**

From deep burgundy to bright cherry reds are not going anywhere and wearing them from top to toe is even better.

Murielle wears track pants, R 799, Kappa; hoodies, R 299, and puffer jacket, R1 199, both H&M

Daberechi wears a T-shirt R3 595, and printed silk trousers, R9 350, both Annani

## DABERECHI UKOHA- KALU

Height: 175cm Bust: 74cm Waist: 64cm Hips: 90cm Shoe: 8 UK Hair: Black Eyes: Brown



# BOSS MODELS

CAPE TOWN



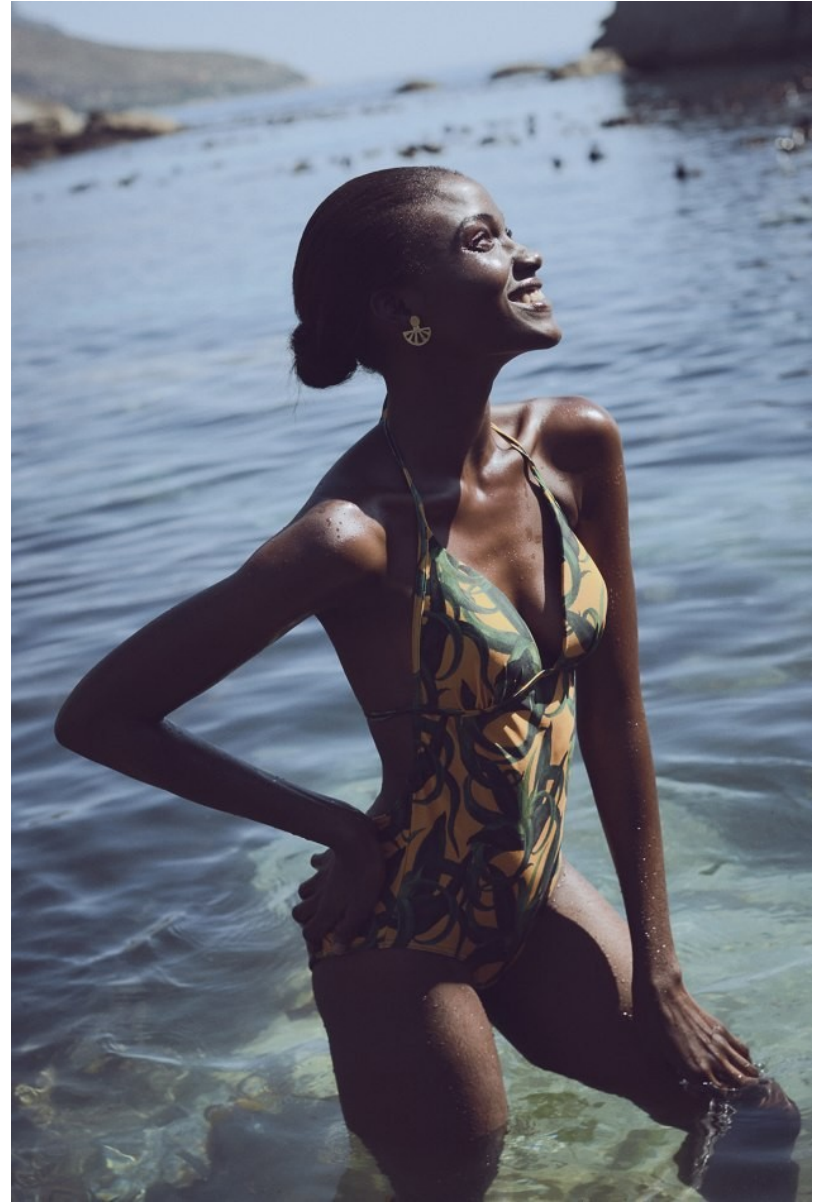
**DABERECHI UKOHA- KALU**

Height: 175cm Bust: 74cm Waist: 64cm Hips: 90cm Shoe: 8 UK Hair: Black Eyes: Brown



# BOSS MODELS

CAPE TOWN



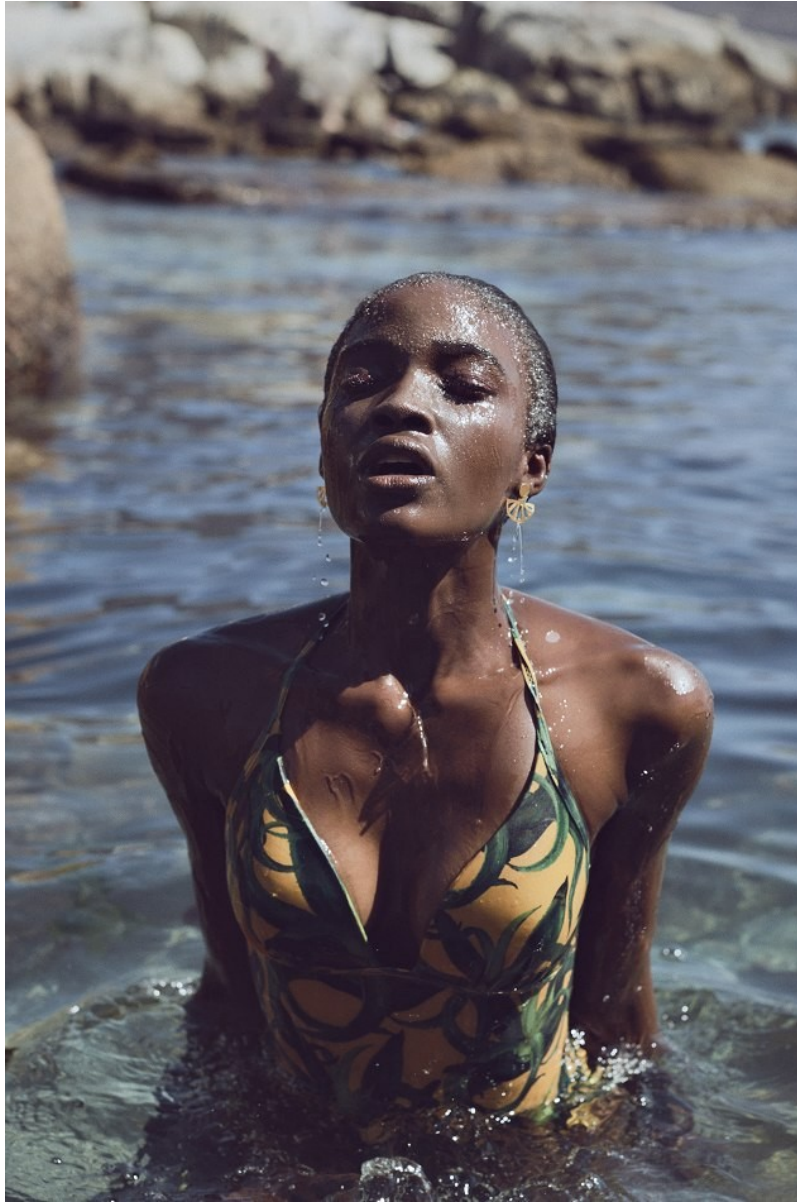
DABERECHI UKOHA- KALU

Height: 175cm Bust: 74cm Waist: 64cm Hips: 90cm Shoe: 8 UK Hair: Black Eyes: Brown



# BOSS MODELS

CAPE TOWN



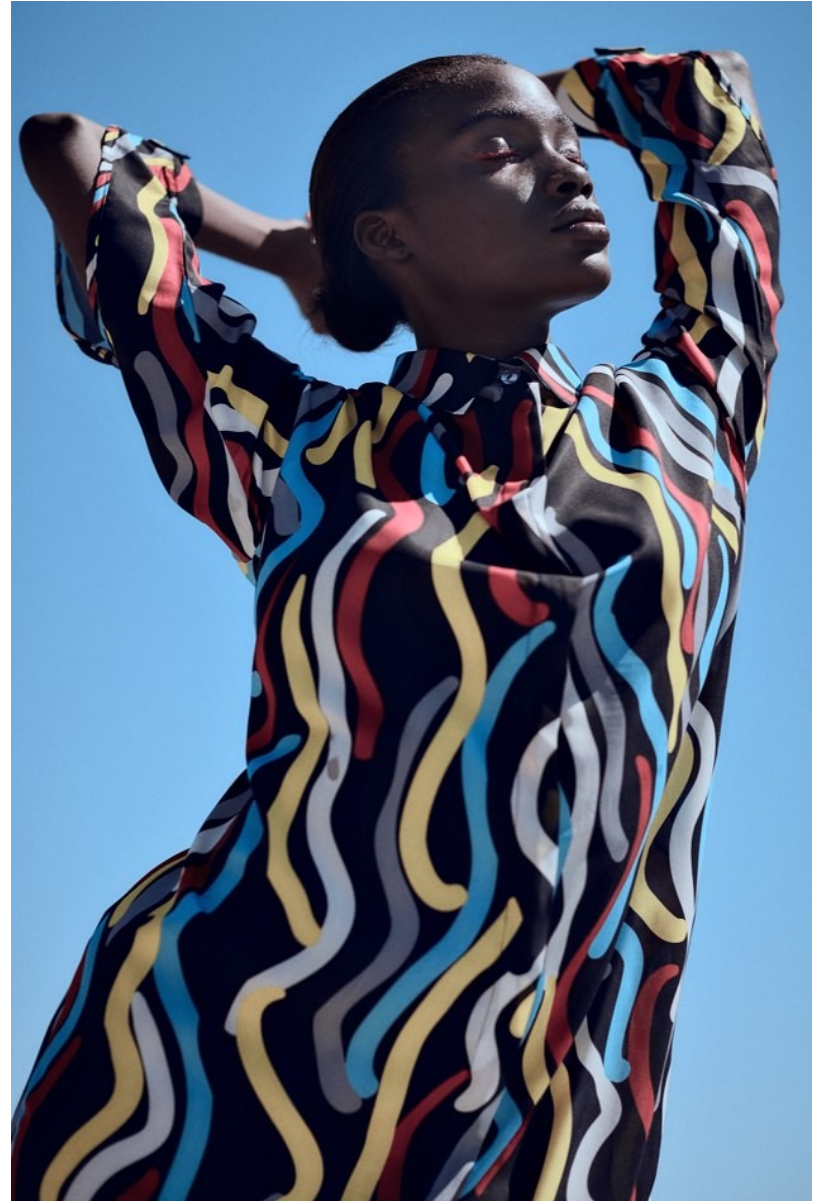
DABERECHI UKOHA- KALU

Height: 175cm Bust: 74cm Waist: 64cm Hips: 90cm Shoe: 8 UK Hair: Black Eyes: Brown



# BOSS MODELS

CAPE TOWN



DABERECHI UKOHA- KALU

Height: 175cm Bust: 74cm Waist: 64cm Hips: 90cm Shoe: 8 UK Hair: Black Eyes: Brown



# BOSS MODELS

CAPE TOWN



## DABERECHI UKOHA- KALU

Height: 175cm Bust: 74cm Waist: 64cm Hips: 90cm Shoe: 8 UK Hair: Black Eyes: Brown



# BOSS MODELS

CAPE TOWN



DABERECHI UKOHA- KALU

Height: 175cm Bust: 74cm Waist: 64cm Hips: 90cm Shoe: 8 UK Hair: Black Eyes: Brown



# BOSS MODELS

CAPE TOWN



DABERECHI UKOHA- KALU

Height: 175cm Bust: 74cm Waist: 64cm Hips: 90cm Shoe: 8 UK Hair: Black Eyes: Brown