

# BOSS MODELS

CAPE TOWN



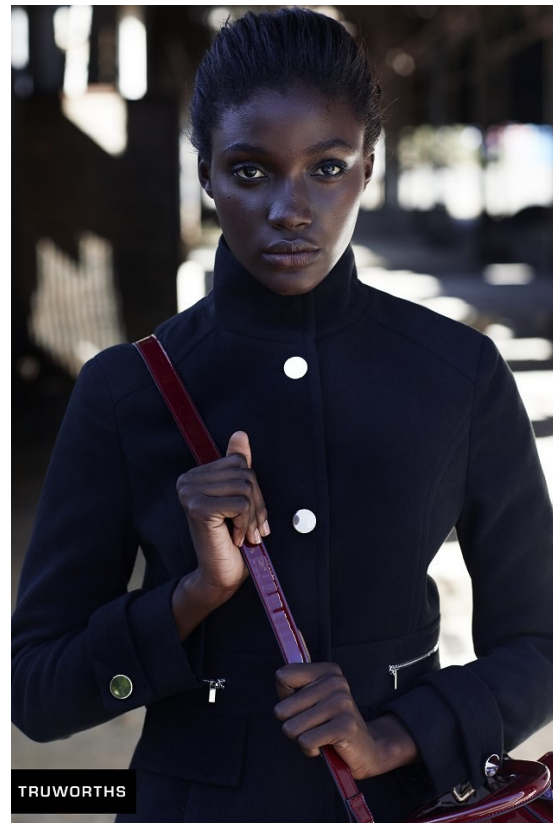
## DABERECHI UKOHA- KALU

Height: 175cm Bust: 74cm Waist: 64cm Hips: 90cm Shoe: 8 UK Hair: Black Eyes: Brown



# BOSS MODELS

CAPE TOWN



DABERECHI UKOHA- KALU

Height: 175cm Bust: 74cm Waist: 64cm Hips: 90cm Shoe: 8 UK Hair: Black Eyes: Brown



# BOSS MODELS

CAPE TOWN



## Leopard Print

INDULGE YOUR ANIMAL INSTINCT WITH AN EXOTIC LEOPARD PRINT – ONE OF THE HOT TRENDS SPOTTED ON THE CATWALK.

T-shirt R249, COTTON ON Jacket R3399 and pants R2399, SCOTCH & BODA Bag R599, AMER-ROSE HEININGS Boots R699, COTTON ON



## Novelty Prints

SWEATERS ARE COOL AGAIN! WITH ALL SORTS OF TEXTURES, COLOURS AND EYE-CATCHING PATTERN EXTRAS.

Jacard and pants R599 each, ZARA Top R220, FORTY SEVEN SLIM JEANS R550, TESSA DESIGN Lounge R180, COLETTE BY COLETTE MAXIMAR Boots R299, ALDO



## Winter Whites

AN ALL-WHITE MONOCHROME LOOK + WHITE BOHIES = AN EFFORTLESS, CRISP FASHION FORMULA.

Polo-neck top R169, FORENIE JEANS R2199, CALVIN KLEIN Jacket R3999, COTTON ON Jacket R1499, STEVE MADDEN

FASHION INTERVIEW: LEBEGO MTSOLONGO HAIR: MARY OCUKUN MAKEUP: KELLY PATRICK GLOUSE ARTIST MAKEUP CONSULTING: CHARLIE LES (BEIGES VOIR COLLECTION) MODEL: DABERECHI UKOHA AT BOSS MODELS PRICES CORRECT AT TIME OF GOING TO PRESS STOCKS ON PAGE 110



## Graphic Mashup

ADD A PINCH OF PUNCH WITH A FUSION OF ECLECTIC PRINTS AND STRIKING HUES.

Polo-neck top R399, OLD KHANU Jersey R550, BARBETTE SWEAT R550, CHER DRYER Camera R740, THE LOT Bag R699, CHARLES & KEITH

DABERECHI UKOHA- KALU

Height: 175cm Bust: 74cm Waist: 64cm Hips: 90cm Shoe: 8 UK Hair: Black Eyes: Brown



# BOSS MODELS

CAPE TOWN



DABERECHI UKOHA- KALU

Height: 175cm Bust: 74cm Waist: 64cm Hips: 90cm Shoe: 8 UK Hair: Black Eyes: Brown



# BOSS MODELS

CAPE TOWN



## DABERECHI UKOHA- KALU

Height: 175cm Bust: 74cm Waist: 64cm Hips: 90cm Shoe: 8 UK Hair: Black Eyes: Brown



# BOSS MODELS

CAPE TOWN



**GRAPHIC & MONOCHROMATIC**  
Logos, expressive words and bold shapes in anything-but-boring black and white make for one bold statement.

Black-and-white jersey, R339 and leggings, R749. Both 100% cotton. R1 099. Sheeps.



**CHECK ME**  
Heritage ch them up by bright color accessories.  
Check sweat rain coat, R1, bag, R10 790



## DABERECHI UKOHA- KALU

Height: 175cm Bust: 74cm Waist: 64cm Hips: 90cm Shoe: 8 UK Hair: Black Eyes: Brown



# BOSS MODELS

CAPE TOWN



## DABERECHI UKOHA- KALU

Height: 175cm Bust: 74cm Waist: 64cm Hips: 90cm Shoe: 8 UK Hair: Black Eyes: Brown



# BOSS MODELS

CAPE TOWN



## DABERECHI UKOHA-KALU

Height: 175cm Bust: 74cm Waist: 64cm Hips: 90cm Shoe: 8 UK Hair: Black Eyes: Brown



# BOSS MODELS

CAPE TOWN



## DENIM + WRAPPING

Inspired by rat hair guru Iotte Mensah and by Afro hair threading, wrapped gold allows you create a three-dimensional look right from the scalp. The length of the rat or ponytail determines the simplicity or complexity of the style.

BERECHI WEARS: JEANS: POLO; CALVIN KLEIN; JERSEY: H&M; BOOTS: HUGO BOSS; GREEN CROSS; ANYON WEARS: JEANS: ZARA; JACKET: H&M; TANK: H&M; CALVIN KLEIN; SHOES: HUGO BOSS; SUPERGA

## DABERECHI UKOHA- KALU

Height: 175cm Bust: 74cm Waist: 64cm Hips: 90cm Shoe: 8 UK Hair: Black Eyes: Brown



# BOSS MODELS

CAPE TOWN



DABERECHI UKOHA- KALU

Height: 175cm Bust: 74cm Waist: 64cm Hips: 90cm Shoe: 8 UK Hair: Black Eyes: Brown







# BOSS MODELS

CAPE TOWN



DABERECHI UKOHA- KALU

Height: 175cm Bust: 74cm Waist: 64cm Hips: 90cm Shoe: 8 UK Hair: Black Eyes: Brown



# BOSS MODELS

CAPE TOWN



DABERECHI UKOHA- KALU

Height: 175cm Bust: 74cm Waist: 64cm Hips: 90cm Shoe: 8 UK Hair: Black Eyes: Brown

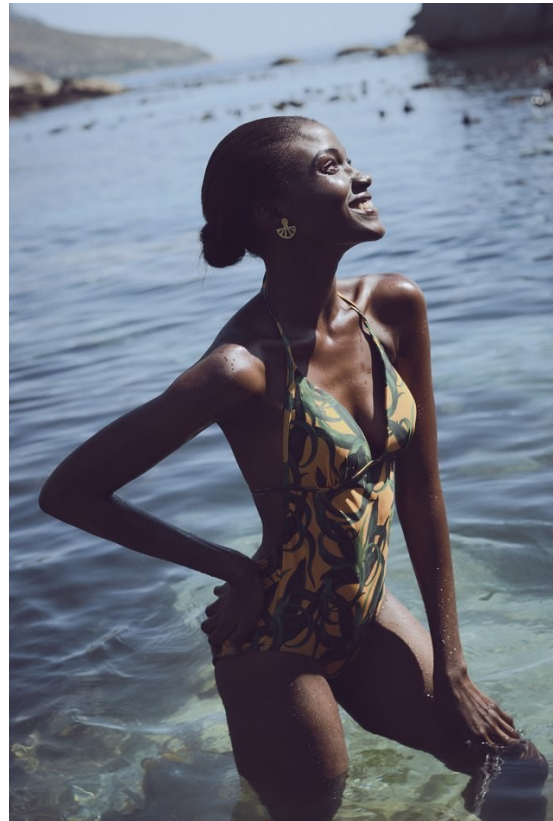






# BOSS MODELS

CAPE TOWN



DABERECHI UKOHA- KALU

Height: 175cm Bust: 74cm Waist: 64cm Hips: 90cm Shoe: 8 UK Hair: Black Eyes: Brown



# BOSS MODELS

CAPE TOWN



DABERECHI UKOHA- KALU

Height: 175cm Bust: 74cm Waist: 64cm Hips: 90cm Shoe: 8 UK Hair: Black Eyes: Brown



# BOSS MODELS

CAPE TOWN



DABERECHI UKOHA- KALU

Height: 175cm Bust: 74cm Waist: 64cm Hips: 90cm Shoe: 8 UK Hair: Black Eyes: Brown



# BOSS MODELS

CAPE TOWN



## DABERECHI UKOHA- KALU

Height: 175cm Bust: 74cm Waist: 64cm Hips: 90cm Shoe: 8 UK Hair: Black Eyes: Brown