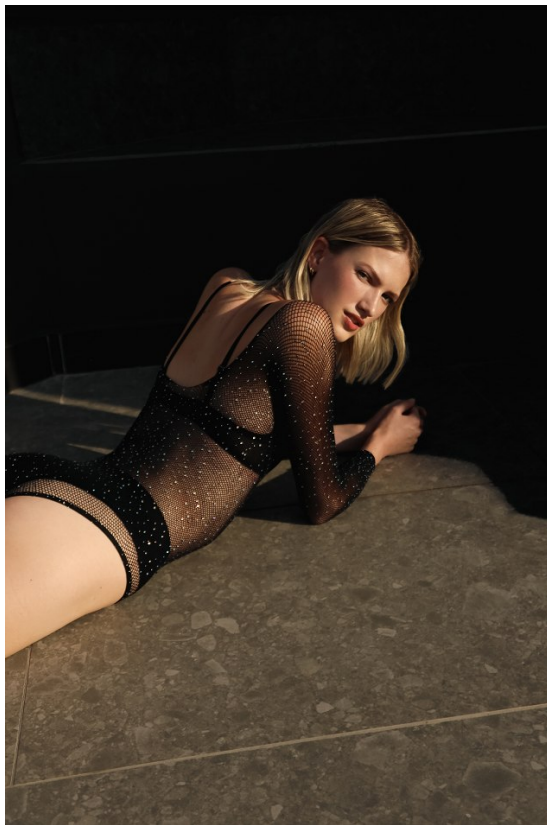


# BOSS MODELS

CAPE TOWN



CLAURETTE OOSTHUIZEN

Height: 176cm Bust: 76cm Waist: 64cm Hips: 91cm Shoe: 5 UK Hair: Blonde Eyes: Blue

# BOSS MODELS

CAPE TOWN



CLAURETTE OOSTHUIZEN

Height: 176cm Bust: 76cm Waist: 64cm Hips: 91cm Shoe: 5 UK Hair: Blonde Eyes: Blue

# BOSS MODELS

CAPE TOWN



CLAURETTE OOSTHUIZEN

Height: 176cm Bust: 76cm Waist: 64cm Hips: 91cm Shoe: 5 UK Hair: Blonde Eyes: Blue

# BOSS MODELS

CAPE TOWN

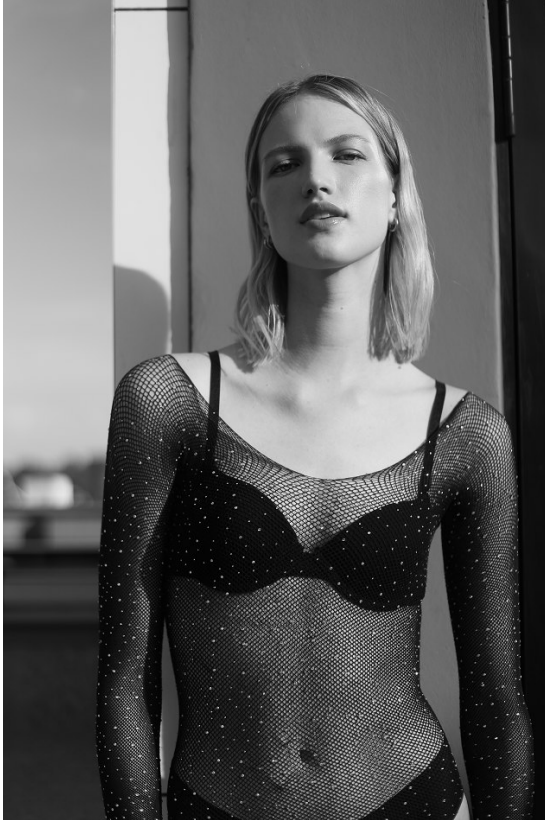


**CLAURETTE OOSTHUIZEN**

Height: 176cm Bust: 76cm Waist: 64cm Hips: 91cm Shoe: 5 UK Hair: Blonde Eyes: Blue

# BOSS MODELS

CAPE TOWN

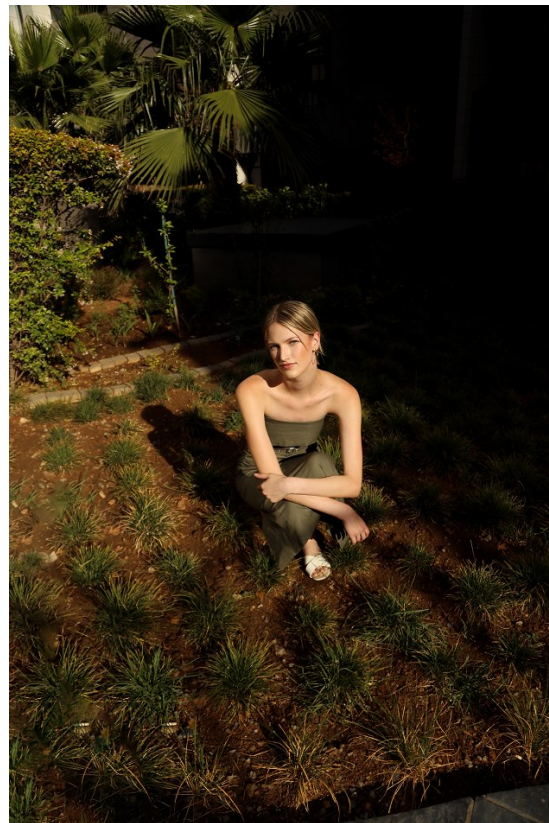


CLAURETTE OOSTHUIZEN

Height: 176cm Bust: 76cm Waist: 64cm Hips: 91cm Shoe: 5 UK Hair: Blonde Eyes: Blue

# BOSS MODELS

CAPE TOWN



CLAURETTE OOSTHUIZEN

Height: 176cm Bust: 76cm Waist: 64cm Hips: 91cm Shoe: 5 UK Hair: Blonde Eyes: Blue

# BOSS MODELS

CAPE TOWN



Image: Claurette Oosthuizen represented by Boss Models Cape Town

**CLAURETTE OOSTHUIZEN**

Height: 176cm Bust: 76cm Waist: 64cm Hips: 91cm Shoe: 5 UK Hair: Blonde Eyes: Blue