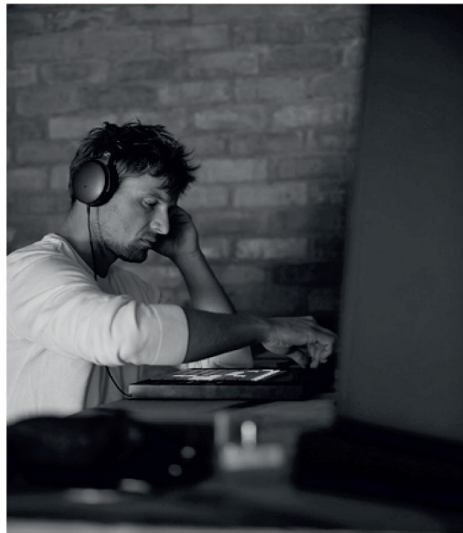


# BOSS MODELS

CAPE TOWN



DYLAN ARMSTRONG

Height: 188cm Chest: 101cm Waist: 83cm Suit: 40 L Shoe: 11 UK Hair: Dark Blonde Eyes: Green

# BOSS MODELS

CAPE TOWN



DYLAN ARMSTRONG

Height: 188cm Chest: 101cm Waist: 83cm Suit: 40 L Shoe: 11 UK Hair: Dark Blonde Eyes: Green



# BOSS MODELS

CAPE TOWN



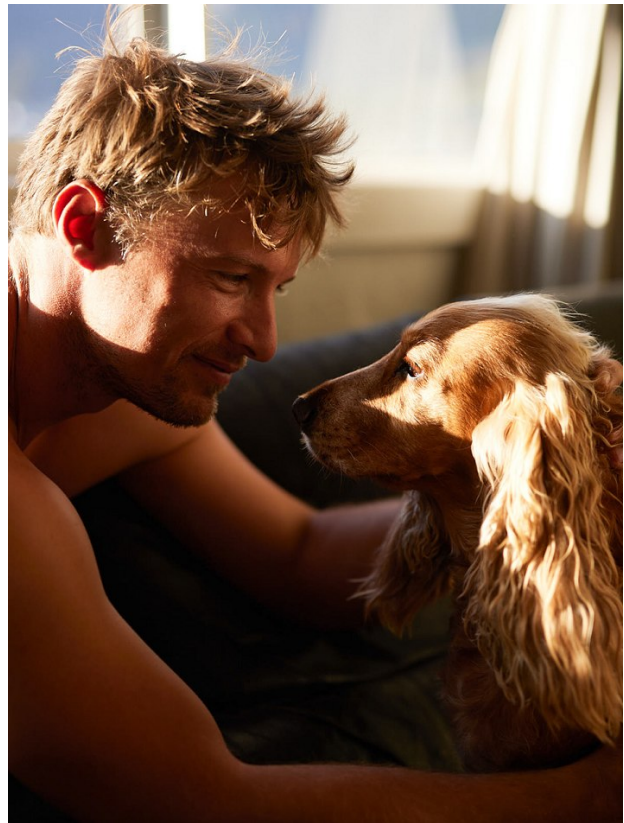
110 ARTICLES



Outfitting: **Shirts**  
Long-sleeved white shirt and  
short-sleeved denim shirt, all  
pocket shirts, **Thomas Pink**,  
H&M, **Armani**, **Calvin Klein**,  
dress shirt, **Branded Custom**.

Outfitting: **Shirts**  
White dress shirt and vest,  
Sunguy white denim shirt,  
Cotton & denim shirt, **Armani**,  
Cotton & denim shirt, **Armani**,  
and polo shirt, **Armani**, **Armani**,  
**Armani**, **Armani**, **Armani**,  
**Armani**, **Armani**, **Armani**.

The dog  
Woolly white leather overcoat,  
**Branded Custom**, **Armani**,  
cotton shirt, **Armani**, **Armani**,  
leather belt, **Armani**, **Armani**,  
**Armani**, **Armani**, **Armani**,  
**Armani**, **Armani**, **Armani**.



## DYLAN ARMSTRONG

Height: 188cm Chest: 101cm Waist: 83cm Suit: 40 L Shoe: 11 UK Hair: Dark Blonde Eyes: Green

# BOSS MODELS

CAPE TOWN



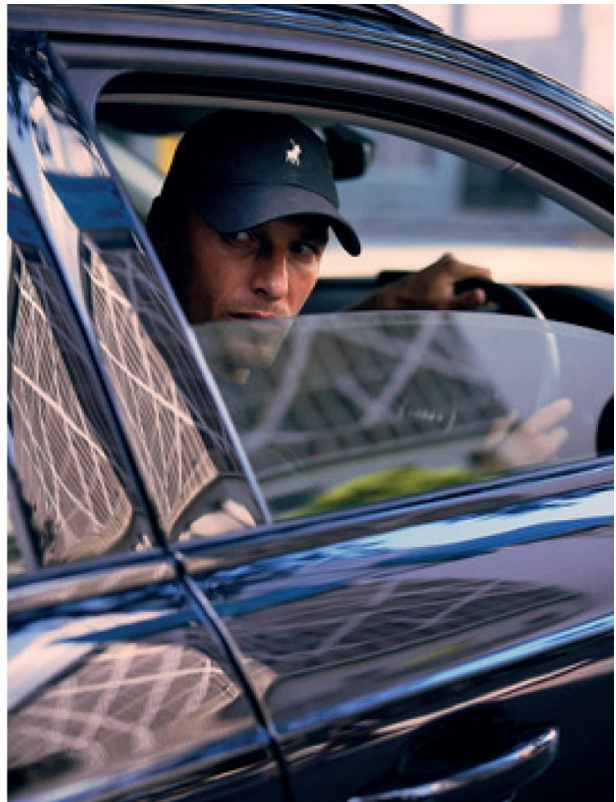
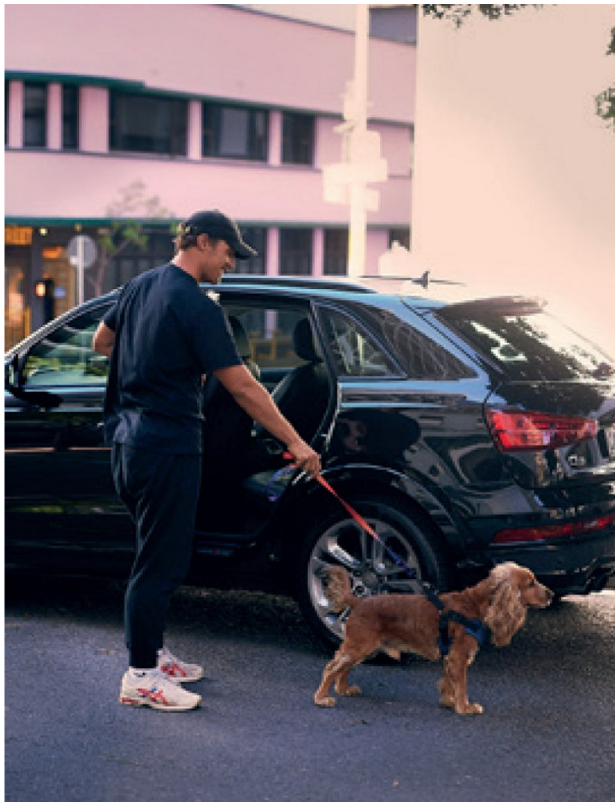
**DYLAN ARMSTRONG**

Height: 188cm Chest: 101cm Waist: 83cm Suit: 40 L Shoe: 11 UK Hair: Dark Blonde Eyes: Green



# BOSS MODELS

CAPE TOWN



DYLAN ARMSTRONG

Height: 188cm Chest: 101cm Waist: 83cm Suit: 40 L Shoe: 11 UK Hair: Dark Blonde Eyes: Green



# BOSS MODELS

CAPE TOWN



## DYLAN ARMSTRONG

Height: 188cm Chest: 101cm Waist: 83cm Suit: 40 L Shoe: 11 UK Hair: Dark Blonde Eyes: Green



# BOSS MODELS

CAPE TOWN



DYLAN ARMSTRONG

Height: 188cm Chest: 101cm Waist: 83cm Suit: 40 L Shoe: 11 UK Hair: Dark Blonde Eyes: Green



# BOSS MODELS

CAPE TOWN



**The look:**  
Wool jacket: overland, 5110  
Denim: G-Star RAW, Pure Ralph  
Levy, jeans: Puma, Puma Heritage  
belt: Cuckoo & Jones, watch: Scott  
Hornet, sunglasses: Montblanc Meisterstück  
0107/2 arm

**Styling team:**  
Creative: Ingrid, John  
Styling: Amy, Amy  
Richard & Anderson, Kevin, Louise  
Johel (photo and direction), Gerald  
van der Merwe, Oliver, Pooles, Tim  
van der Merwe, Range of London

126 ARTICLES



## DYLAN ARMSTRONG

Height: 188cm Chest: 101cm Waist: 83cm Suit: 40 L Shoe: 11 UK Hair: Dark Blonde Eyes: Green



# BOSS MODELS

CAPE TOWN



## DYLAN ARMSTRONG

Height: 188cm Chest: 101cm Waist: 83cm Suit: 40 L Shoe: 11 UK Hair: Dark Blonde Eyes: Green



# BOSS MODELS

CAPE TOWN



DYLAN ARMSTRONG

Height: 188cm Chest: 101cm Waist: 83cm Suit: 40 L Shoe: 11 UK Hair: Dark Blonde Eyes: Green



# BOSS MODELS

CAPE TOWN



**DYLAN ARMSTRONG**

Height: 188cm Chest: 101cm Waist: 83cm Suit: 40 L Shoe: 11 UK Hair: Dark Blonde Eyes: Green



# BOSS MODELS

CAPE TOWN



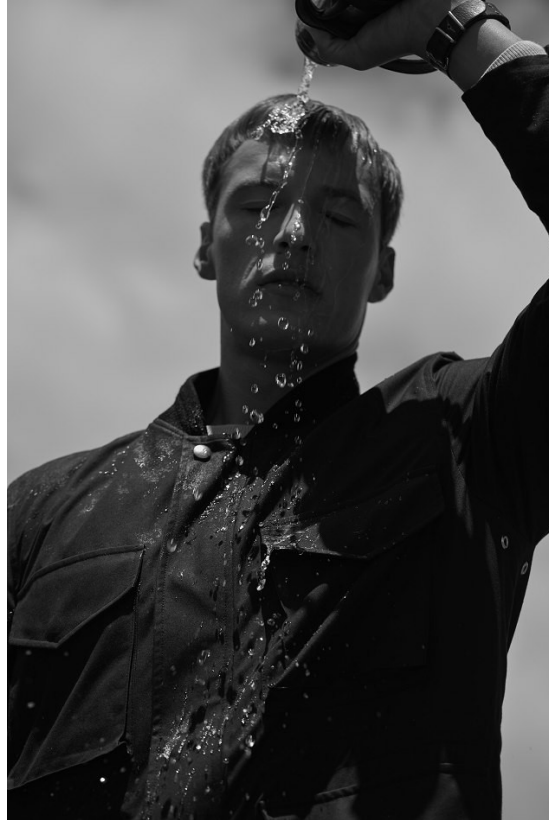
DYLAN ARMSTRONG

Height: 188cm Chest: 101cm Waist: 83cm Suit: 40 L Shoe: 11 UK Hair: Dark Blonde Eyes: Green



# BOSS MODELS

CAPE TOWN



DYLAN ARMSTRONG

Height: 188cm Chest: 101cm Waist: 83cm Suit: 40 L Shoe: 11 UK Hair: Dark Blonde Eyes: Green



# BOSS MODELS

CAPE TOWN



## DYLAN ARMSTRONG

Height: 188cm Chest: 101cm Waist: 83cm Suit: 40 L Shoe: 11 UK Hair: Dark Blonde Eyes: Green



# BOSS MODELS

CAPE TOWN



DYLAN ARMSTRONG

Height: 188cm Chest: 101cm Waist: 83cm Suit: 40 L Shoe: 11 UK Hair: Dark Blonde Eyes: Green



# BOSS MODELS

CAPE TOWN



DYLAN ARMSTRONG

Height: 188cm Chest: 101cm Waist: 83cm Suit: 40 L Shoe: 11 UK Hair: Dark Blonde Eyes: Green



# BOSS MODELS

CAPE TOWN



**DYLAN ARMSTRONG**

Height: 188cm Chest: 101cm Waist: 83cm Suit: 40 L Shoe: 11 UK Hair: Dark Blonde Eyes: Green



# BOSS MODELS

CAPE TOWN



**DYLAN ARMSTRONG**

Height: 188cm Chest: 101cm Waist: 83cm Suit: 40 L Shoe: 11 UK Hair: Dark Blonde Eyes: Green