

BOSS MODELS

CAPE TOWN

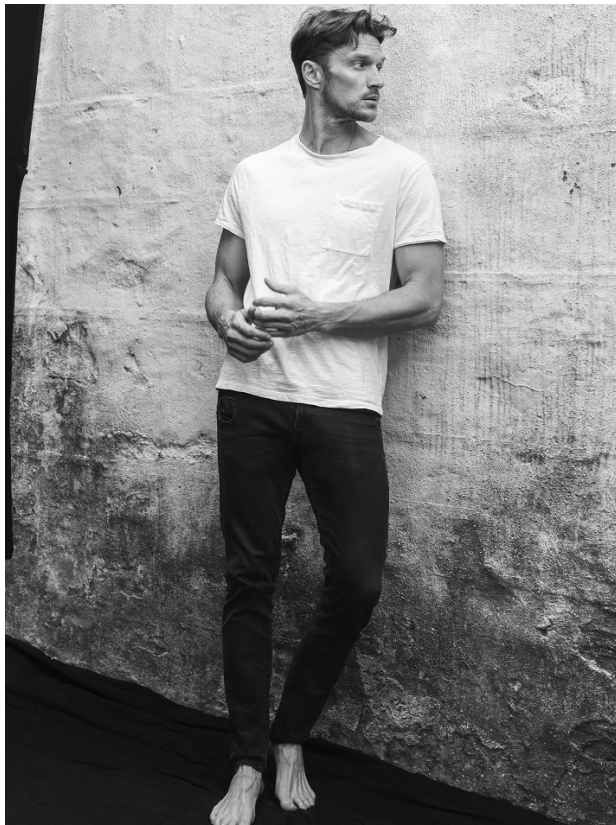


SHAUN DE WET

Height: 188cm Chest: 98cm Waist: 79cm Suit: 38.5 R Shoe: 10.5 UK Hair: Blonde Eyes: Blue

BOSS MODELS

CAPE TOWN

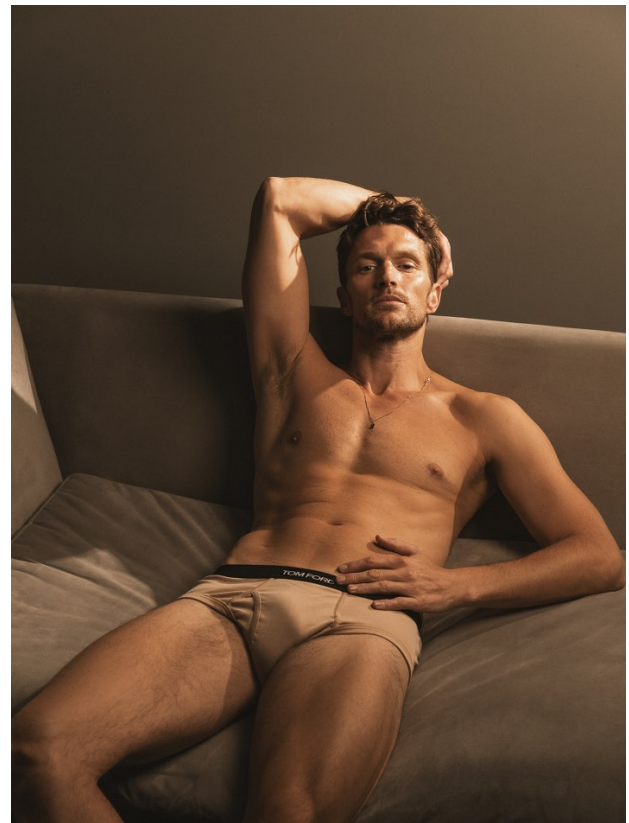
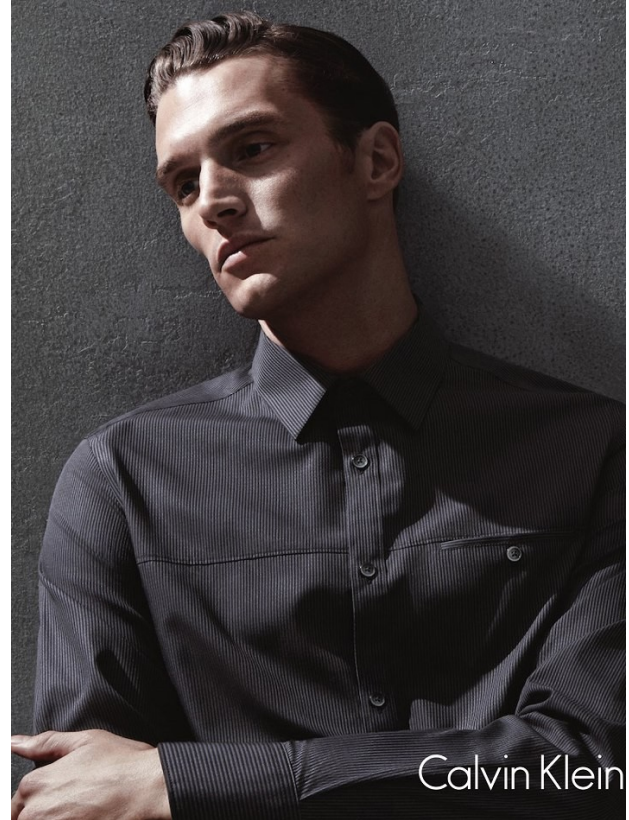


SHAUN DE WET

Height: 188cm Chest: 98cm Waist: 79cm Suit: 38.5 R Shoe: 10.5 UK Hair: Blonde Eyes: Blue

BOSS MODELS

CAPE TOWN

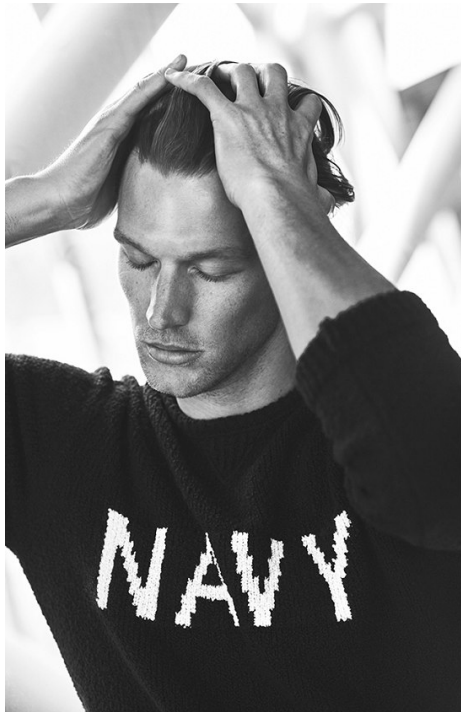


SHAUN DE WET

Height: 188cm Chest: 98cm Waist: 79cm Suit: 38.5 R Shoe: 10.5 UK Hair: Blonde Eyes: Blue

BOSS MODELS

CAPE TOWN



SHAUN DE WET

Height: 188cm Chest: 98cm Waist: 79cm Suit: 38.5 R Shoe: 10.5 UK Hair: Blonde Eyes: Blue

BOSS MODELS

CAPE TOWN



Massimo Dutti

SHAUN DE WET

Height: 188cm Chest: 98cm Waist: 79cm Suit: 38.5 R Shoe: 10.5 UK Hair: Blonde Eyes: Blue

BOSS MODELS

CAPE TOWN

7

BUSINESS



Links Seite: BOSS Anzug, detailliert: 899,- ETON Hemd 185,-
Dress Set, links: DRYDORN Anzug 499,- YVES Hemd 79,90
Dress Set, rechts: STRELLION Veston a'Mic'N' Matche 449,-
Hemd 119,- Hose a'Mic'N' Matche 179,- Krawatte 79,90



SHAUN DE WET

Height: 188cm Chest: 98cm Waist: 79cm Suit: 38.5 R Shoe: 10.5 UK Hair: Blonde Eyes: Blue

BOSS MODELS

CAPE TOWN

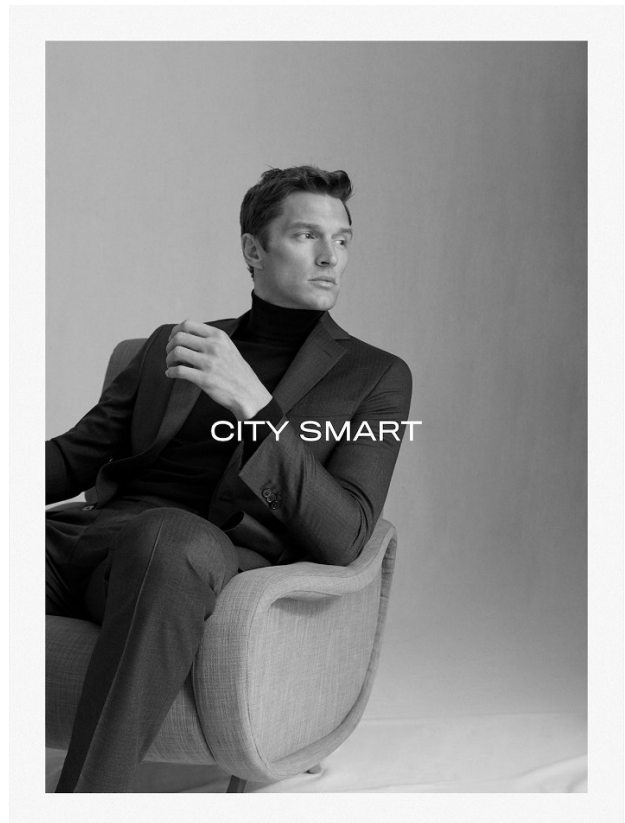
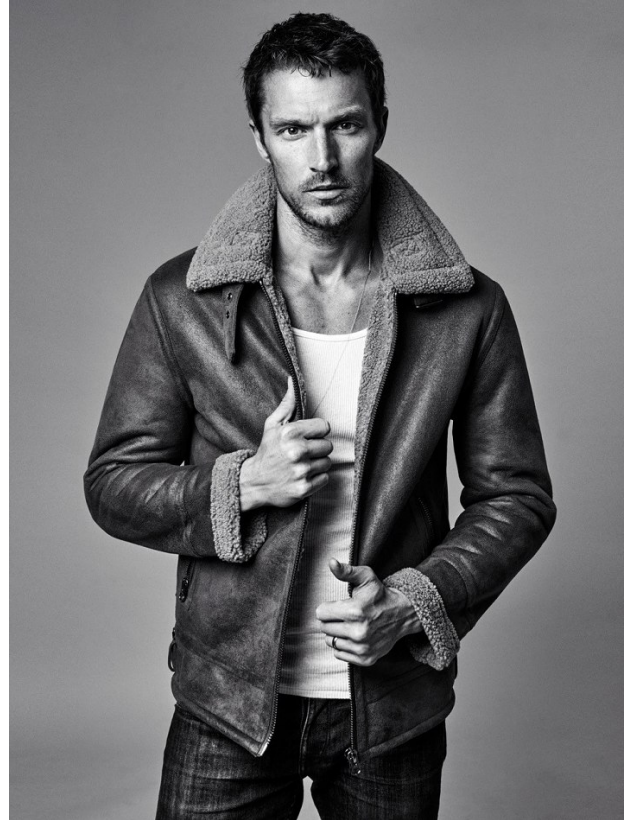


SHAUN DE WET

Height: 188cm Chest: 98cm Waist: 79cm Suit: 38.5 R Shoe: 10.5 UK Hair: Blonde Eyes: Blue

BOSS MODELS

CAPE TOWN



SHAUN DE WET

Height: 188cm Chest: 98cm Waist: 79cm Suit: 38.5 R Shoe: 10.5 UK Hair: Blonde Eyes: Blue

BOSS MODELS

CAPE TOWN



J BRAND
JBRANDJEANS.COM



SHAUN DE WET

Height: 188cm Chest: 98cm Waist: 79cm Suit: 38.5 R Shoe: 10.5 UK Hair: Blonde Eyes: Blue

BOSS MODELS

CAPE TOWN



Shirt: Gae,
Jeans: Reserve Denim,
Curtain: Marni,
Shoes: Marni,
Hair: Marni,
Styling: Marni



SHAUN DE WET

Height: 188cm Chest: 98cm Waist: 79cm Suit: 38.5 R Shoe: 10.5 UK Hair: Blonde Eyes: Blue

BOSS MODELS

CAPE TOWN



Nadja Bender
Bender, 22, lives in Copenhagen when she's not in runway shows for Alexander Wang, Versace, and Lanvin or shooting ad campaigns for Salma and Gisele.

What's your typical preparty routine?

"If I go all in, I'll take a very long shower—wash my hair, shave my legs, and then walk around in my robe for a very long time, just relax, and chill."

How do you get in the mood to go out?

"I'll put on a good party song—we have some lucky pop music [in Denmark]. I would never listen to it unless I was going to a party, but I cannot sit still. I'll be singing into the hair-dryer."

Where do you go when a party is over?

"There's a popular pizza place near all of the clubs. We call it 'Purmo Pizza' because back in the old days, they had a TV screen in the back that would play porn."

SWANKY PANKY
On Nadja Bender: Organza-embroidered vest; Green by Giorgio Armani; Necklace by Beavercreek; Makeup colors: Color Design 5 Shadow & Liner Palette in Midnote; Fragrance: L'Absolu Rouge; Footlock fit: Size by Lancone. On Shaun De Wet: Tuxedo and shirt by Louis Vuitton; Bow tie by Tom Ford; Hair: Orlando Pita of Orlo Salon; Makeup: Dorel; Manicure: Bernadette Thompson. Shot at the Moor Suite at the St. Regis Hotel, New York. Details, see Shopping Guide.

223



calvinklein.com 212.292.9000

SHAUN DE WET

Height: 188cm Chest: 98cm Waist: 79cm Suit: 38.5 R Shoe: 10.5 UK Hair: Blonde Eyes: Blue

BOSS MODELS

CAPE TOWN



SHAUN DE WET

Height: 188cm Chest: 98cm Waist: 79cm Suit: 38.5 R Shoe: 10.5 UK Hair: Blonde Eyes: Blue

BOSS MODELS

CAPE TOWN



SHAUN DE WET

Height: 188cm Chest: 98cm Waist: 79cm Suit: 38.5 R Shoe: 10.5 UK Hair: Blonde Eyes: Blue

BOSS MODELS

CAPE TOWN



SHAUN DE WET

Height: 188cm Chest: 98cm Waist: 79cm Suit: 38.5 R Shoe: 10.5 UK Hair: Blonde Eyes: Blue