

BOSS MODELS

CAPE TOWN

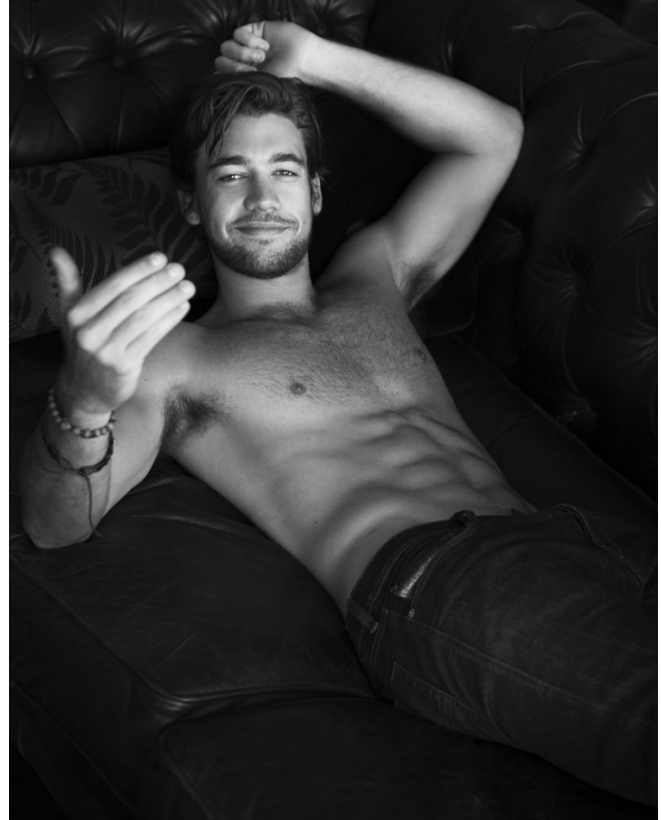


JASON BLAKEY

Height: 185cm Chest: 100cm Waist: 82cm Suit: 40 R Shoe: 10 UK Hair: Brown Eyes: Green

BOSS MODELS

CAPE TOWN



Emporio Armani
Blazer #02 500
French Connection at
Stutlford's shirt #600.
Model's own items.
Dita at Extreme
Eyewear sunglasses
#7 500, Hugo Boss
tie #1 195, Cartier
watch #104 600.
Aldo flip-flops #600

DECEMBER 2014/JANUARY 2015 GQ.CO.ZA 135

JASON BLAKEY

Height: 185cm Chest: 100cm Waist: 82cm Suit: 40 R Shoe: 10 UK Hair: Brown Eyes: Green

BOSS MODELS

CAPE TOWN



JASON BLAKEY

Height: 185cm Chest: 100cm Waist: 82cm Suit: 40 R Shoe: 10 UK Hair: Brown Eyes: Green

BOSS MODELS

CAPE TOWN



JASON BLAKEY

Height: 185cm Chest: 100cm Waist: 82cm Suit: 40 R Shoe: 10 UK Hair: Brown Eyes: Green

BOSS MODELS

CAPE TOWN



JASON BLAKEY

Height: 185cm Chest: 100cm Waist: 82cm Suit: 40 R Shoe: 10 UK Hair: Brown Eyes: Green