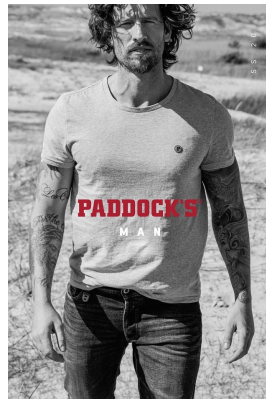
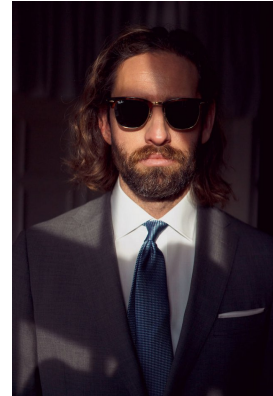


BOSS MODELS

CAPE TOWN



CLAYTON PYLE

Height: 184cm Chest: 105cm Waist: 86cm Suit: 40 R Shoe: 10 UK Hair: Brown Eyes: Green

BOSS MODELS

CAPE TOWN



Spring Summer



est. 1974



2.821



BOSS 1980 5454



BELLEVILLE
801 COTTON YARN DYED
STRUCTURE
R 8 0114.4 924
0824 Navy check



SPORTSWEAR | 2015



48

CLAYTON PYLE

Height: 184cm Chest: 105cm Waist: 86cm Suit: 40 R Shoe: 10 UK Hair: Brown Eyes: Green

BOSS MODELS

CAPE TOWN



CLAYTON PYLE

Height: 184cm Chest: 105cm Waist: 86cm Suit: 40 R Shoe: 10 UK Hair: Brown Eyes: Green