

# BOSS MODELS

CAPE TOWN



SEAN VAN SCHOOR

Height: 189cm Chest: 96cm Waist: 84cm Suit: 40 L Shoe: 9 UK Hair: Light Brown Eyes: Blue

# BOSS MODELS

CAPE TOWN



SEAN VAN SCHOOR

Height: 189cm Chest: 96cm Waist: 84cm Suit: 40 L Shoe: 9 UK Hair: Light Brown Eyes: Blue

# BOSS MODELS

CAPE TOWN



SEAN VAN SCHOOR

Height: 189cm Chest: 96cm Waist: 84cm Suit: 40 L Shoe: 9 UK Hair: Light Brown Eyes: Blue



# BOSS MODELS

CAPE TOWN



SEAN VAN SCHOOR

Height: 189cm Chest: 96cm Waist: 84cm Suit: 40 L Shoe: 9 UK Hair: Light Brown Eyes: Blue



# BOSS MODELS

CAPE TOWN



MH | Guide to Style

CARRERA SUNGLASSES  
R1 170 SAFILO, JACKET  
R590 PUMA

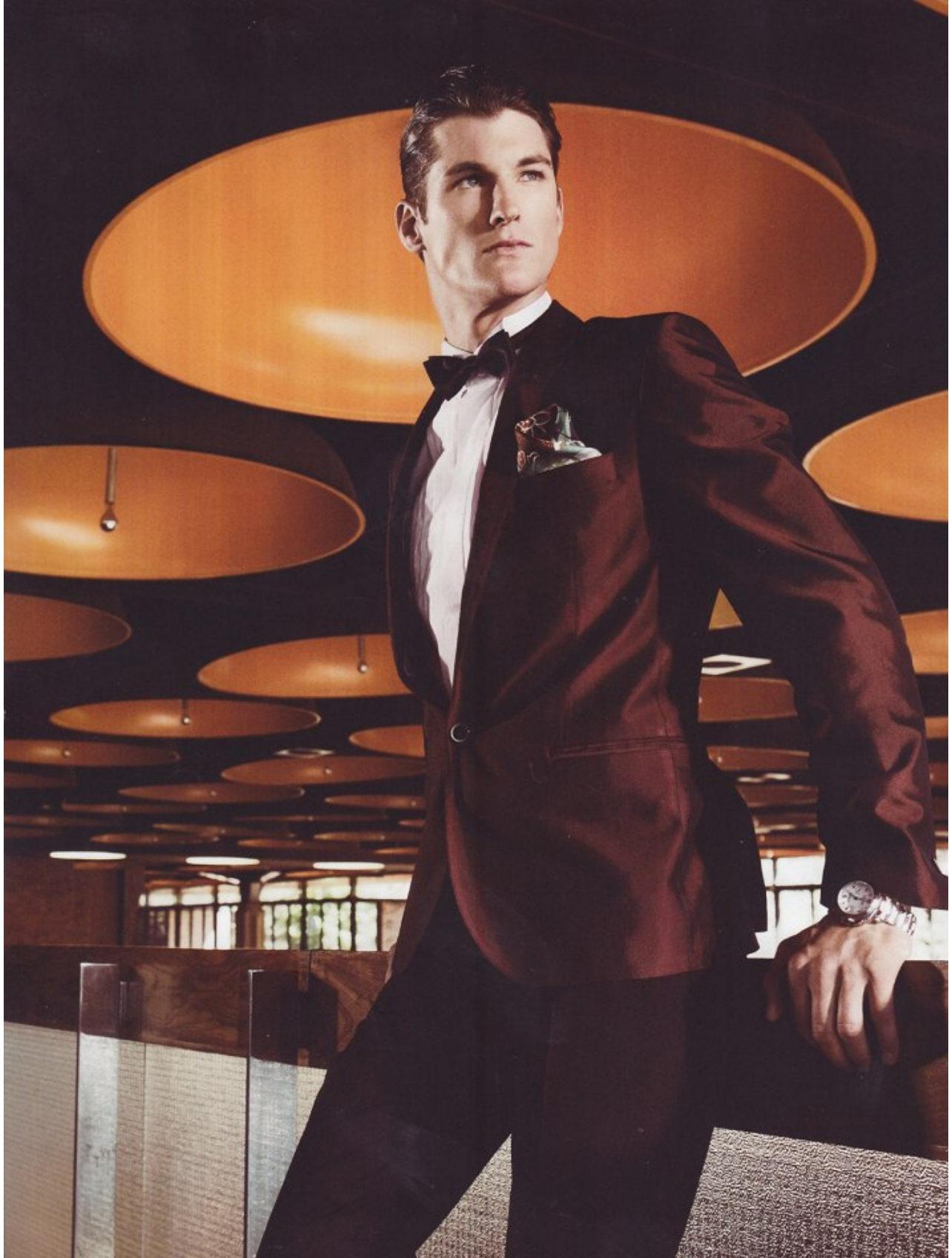
OCTOBER 2011 41

## SEAN VAN SCHOOR

Height: 189cm Chest: 96cm Waist: 84cm Suit: 40 L Shoe: 9 UK Hair: Light Brown Eyes: Blue

# BOSS MODELS

CAPE TOWN



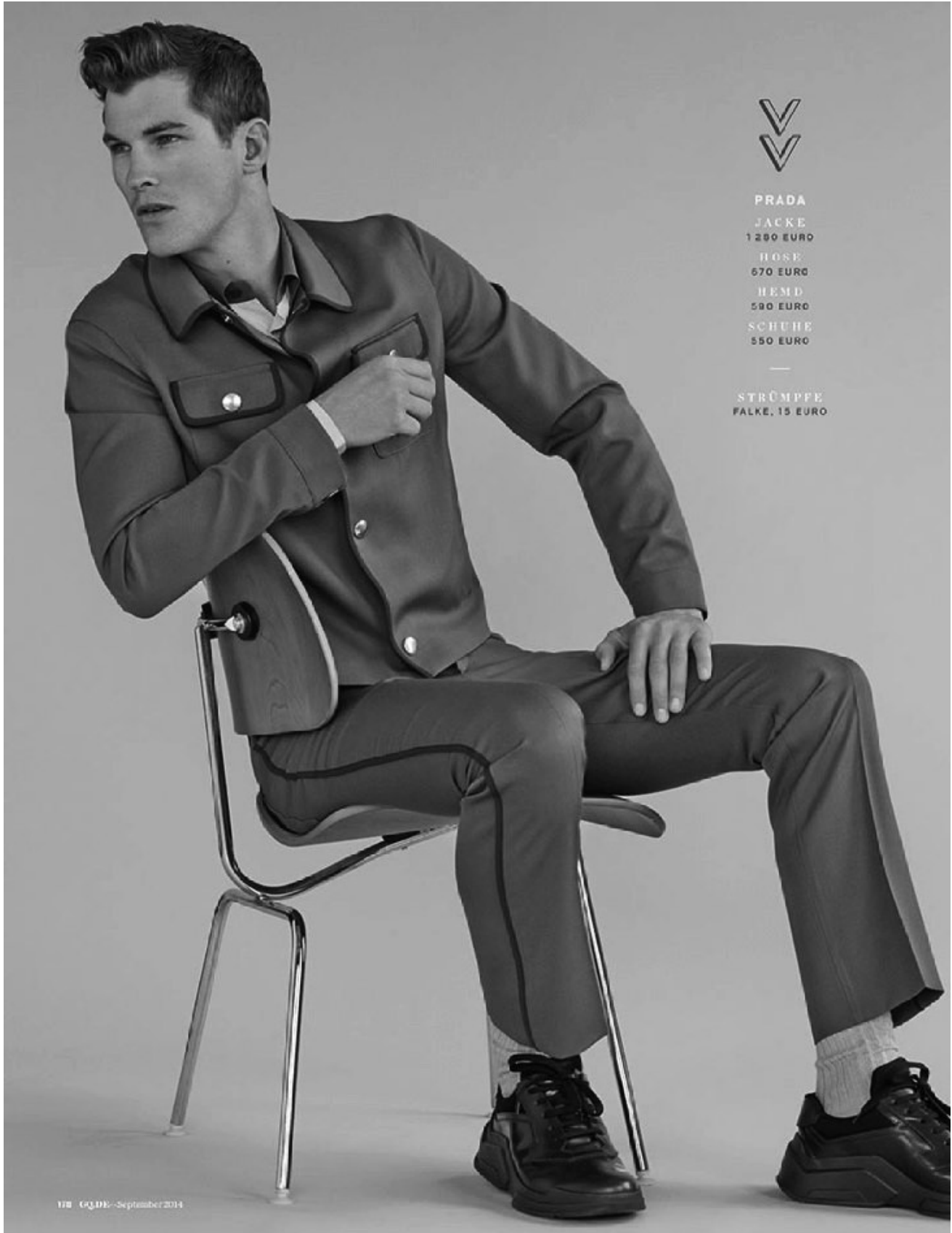
SEAN VAN SCHOOR

Height: 189cm Chest: 96cm Waist: 84cm Suit: 40 L Shoe: 9 UK Hair: Light Brown Eyes: Blue



# BOSS MODELS

CAPE TOWN



PRADA  
JACKE  
1 280 EURO  
HOSE  
670 EURO  
HEMD  
580 EURO  
SCHUHE  
550 EURO

—  
STRÜMPFE  
FALKE, 15 EURO

118 GQ.DE - September 2014

## SEAN VAN SCHOOR

Height: 189cm Chest: 96cm Waist: 84cm Suit: 40 L Shoe: 9 UK Hair: Light Brown Eyes: Blue

# BOSS MODELS

CAPE TOWN



## SEAN VAN SCHOOR

Height: 189cm Chest: 96cm Waist: 84cm Suit: 40 L Shoe: 9 UK Hair: Light Brown Eyes: Blue



# BOSS MODELS

CAPE TOWN

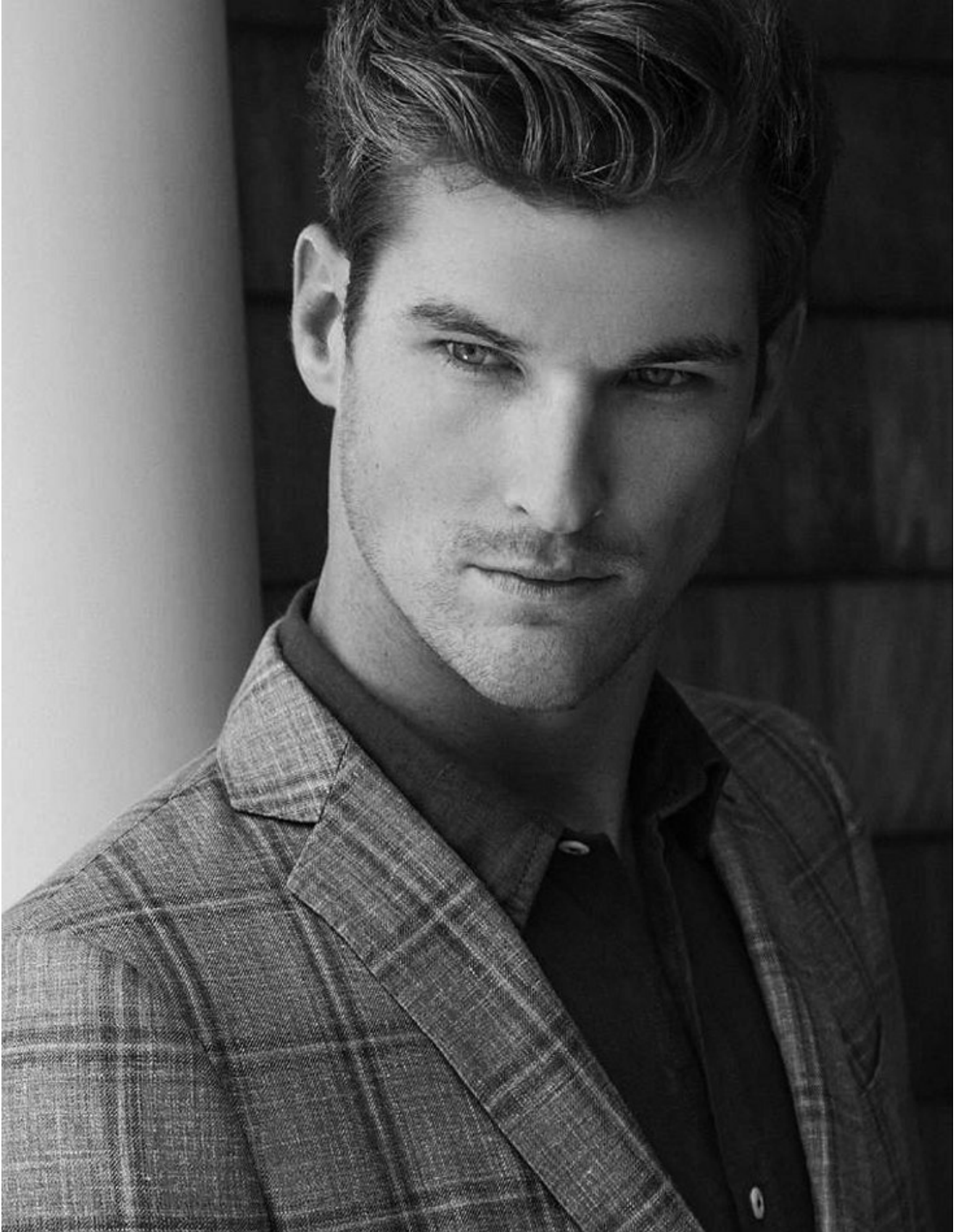


SEAN VAN SCHOOR

Height: 189cm Chest: 96cm Waist: 84cm Suit: 40 L Shoe: 9 UK Hair: Light Brown Eyes: Blue

# BOSS MODELS

CAPE TOWN



SEAN VAN SCHOOR

Height: 189cm Chest: 96cm Waist: 84cm Suit: 40 L Shoe: 9 UK Hair: Light Brown Eyes: Blue



# BOSS MODELS

CAPE TOWN



78 GOSTYLE • AUTUMN/WINTER • 2012

## SEAN VAN SCHOOR

Height: 189cm Chest: 96cm Waist: 84cm Suit: 40 L Shoe: 9 UK Hair: Light Brown Eyes: Blue

# BOSS MODELS

CAPE TOWN



## TIE THE KNOT

A Windsor knot is more balanced than a standard four-in-hand. Wear it slightly loose.

Sean wears Robert Daniel suit R5 400. Burberry shirt R1 995. Gucci at Safilo sunglasses R2 740. Pierre Cardin tie R140. Tag Heuer driving gloves R1 200. Tag Heuer watch R21 995. Designer Warehouse belt R250

82

GQSTYLE • AUTUMN/WINTER • 2012

## SEAN VAN SCHOOR

Height: 189cm Chest: 96cm Waist: 84cm Suit: 40 L Shoe: 9 UK Hair: Light Brown Eyes: Blue



# BOSS MODELS

CAPE TOWN

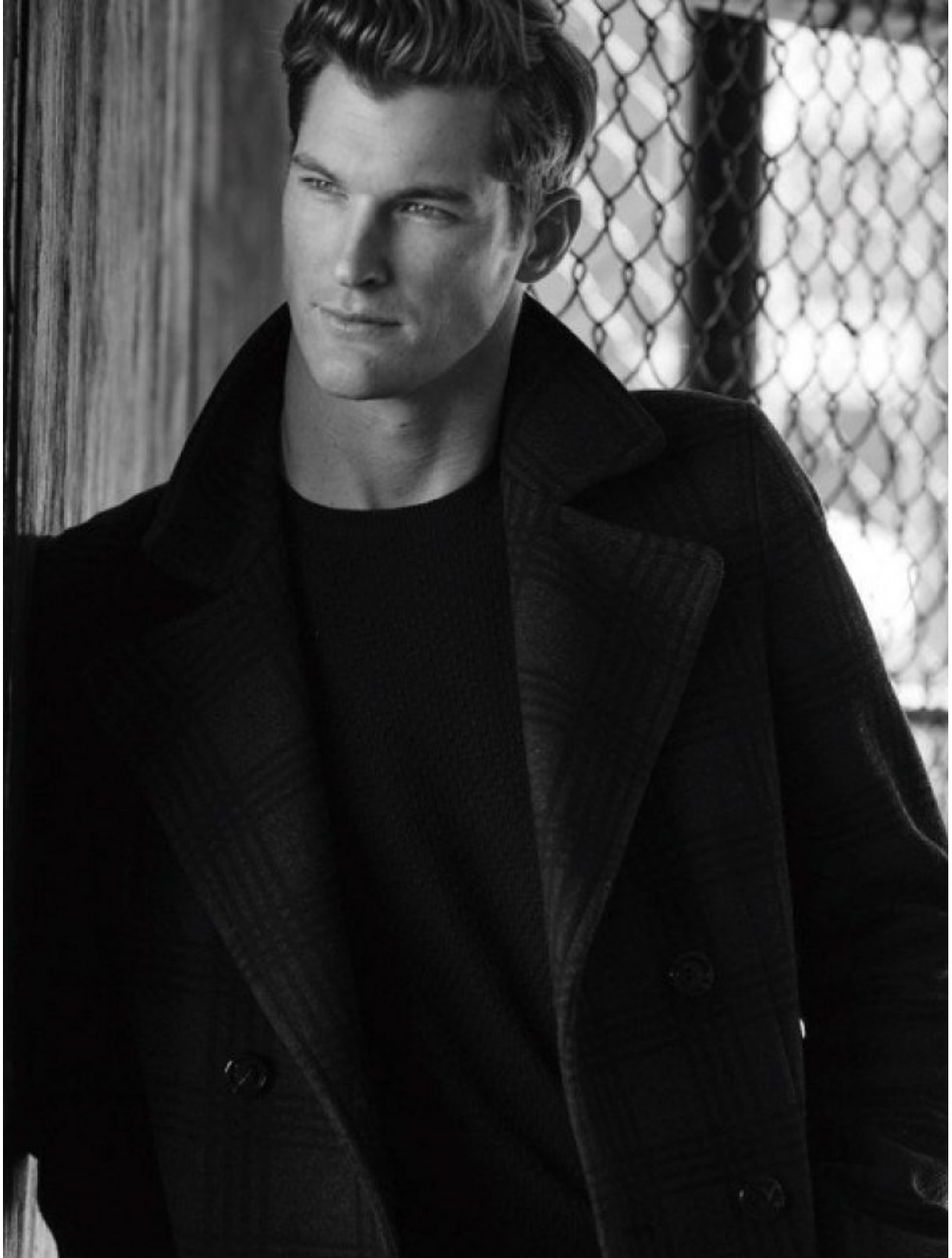


SEAN VAN SCHOOR

Height: 189cm Chest: 96cm Waist: 84cm Suit: 40 L Shoe: 9 UK Hair: Light Brown Eyes: Blue

# BOSS MODELS

CAPE TOWN



SEAN VAN SCHOOR

Height: 189cm Chest: 96cm Waist: 84cm Suit: 40 L Shoe: 9 UK Hair: Light Brown Eyes: Blue



# BOSS MODELS

CAPE TOWN



SEAN VAN SCHOOR

Height: 189cm Chest: 96cm Waist: 84cm Suit: 40 L Shoe: 9 UK Hair: Light Brown Eyes: Blue

# BOSS MODELS

CAPE TOWN

BusinessDay December 2011

VOTED BEST  
MAGAZINE SUPPLEMENT

# wanted



## ALL AT SEA

FROM THE ATLANTIC SEABOARD TO  
THE INDIAN OCEAN, WE'RE ALL  
DECKED OUT FOR THE HOLIDAYS

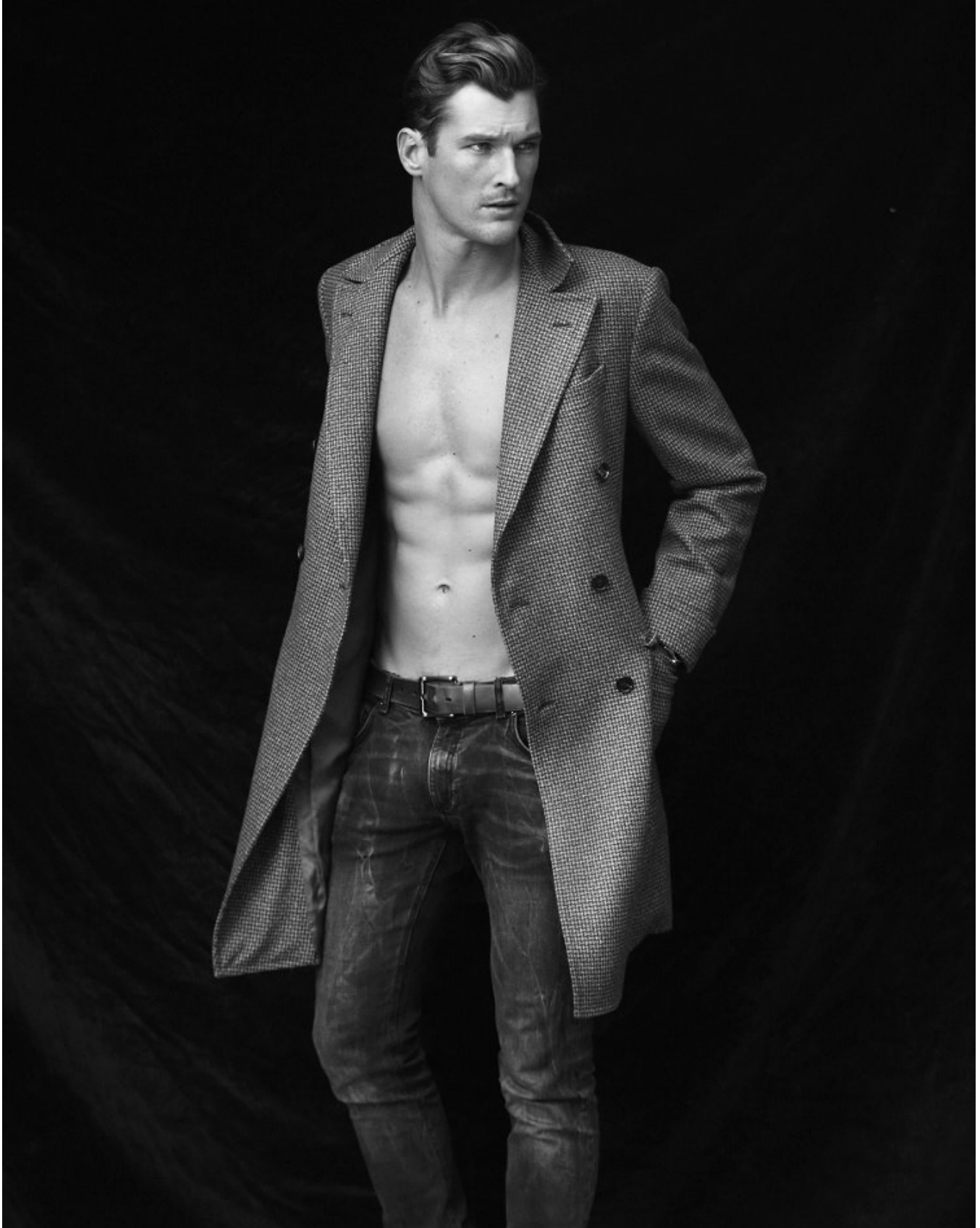
SEAN VAN SCHOOR

Height: 189cm Chest: 96cm Waist: 84cm Suit: 40 L Shoe: 9 UK Hair: Light Brown Eyes: Blue



# BOSS MODELS

CAPE TOWN



SEAN VAN SCHOOR

Height: 189cm Chest: 96cm Waist: 84cm Suit: 40 L Shoe: 9 UK Hair: Light Brown Eyes: Blue

# BOSS MODELS

CAPE TOWN



Blue checked shirt R325 Old Khaki, striped shorts R250 Markham  
Viyella cap R450 House of Monastic, golf shirt R249 Esprit, shorts R450 Canterbury

MH Guide To Style  
89

## SEAN VAN SCHOOR

Height: 189cm Chest: 96cm Waist: 84cm Suit: 40 L Shoe: 9 UK Hair: Light Brown Eyes: Blue



# BOSS MODELS

CAPE TOWN



SEAN VAN SCHOOR

Height: 189cm Chest: 96cm Waist: 84cm Suit: 40 L Shoe: 9 UK Hair: Light Brown Eyes: Blue



# BOSS MODELS

CAPE TOWN



NEW IN

SHOP NEW ARRIVALS ▶

## SEAN VAN SCHOOR

Height: 189cm Chest: 96cm Waist: 84cm Suit: 40 L Shoe: 9 UK Hair: Light Brown Eyes: Blue

# BOSS MODELS

CAPE TOWN



SEAN VAN SCHOOR

Height: 189cm Chest: 96cm Waist: 84cm Suit: 40 L Shoe: 9 UK Hair: Light Brown Eyes: Blue