

BOSS MODELS

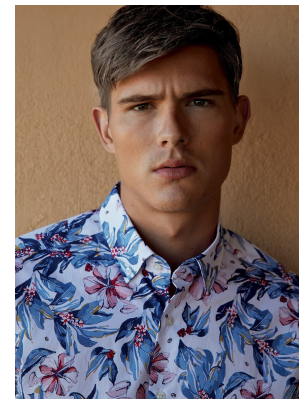
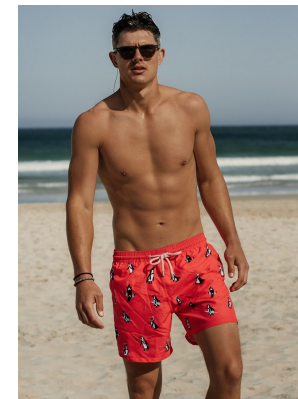
CAPE TOWN



THE ICONIC
» WHITE SHIRT «

Crafted for professionalism, since 1851.

ARROW
300
USA • 1851

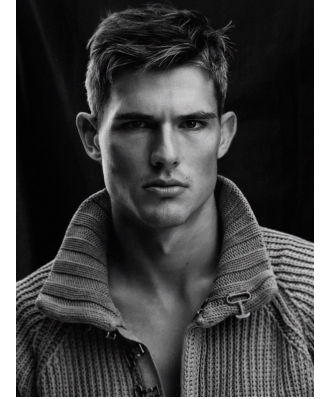


CALVIN KING

Height: 188cm Chest: 99cm Waist: 81cm Suit: 40 R Shoe: 10 UK Hair: Grey Brown Eyes: Green/Grey

BOSS MODELS

CAPE TOWN



CALVIN KING

Height: 188cm Chest: 99cm Waist: 81cm Suit: 40 R Shoe: 10 UK Hair: Grey Brown Eyes: Green/Grey