

# BOSS MODELS

CAPE TOWN



## THE ICONIC »»—WHITE SHIRT—»»



Crafted for professionalism, since 1851.

It's time to head to work. It's time to floor them with our values, our charisma, our sheer passion. It's time to floor them with our professionalism.

This Iconic White shirt from Arrow has been intricately perfected since 1851, for the professional who always dresses the part.

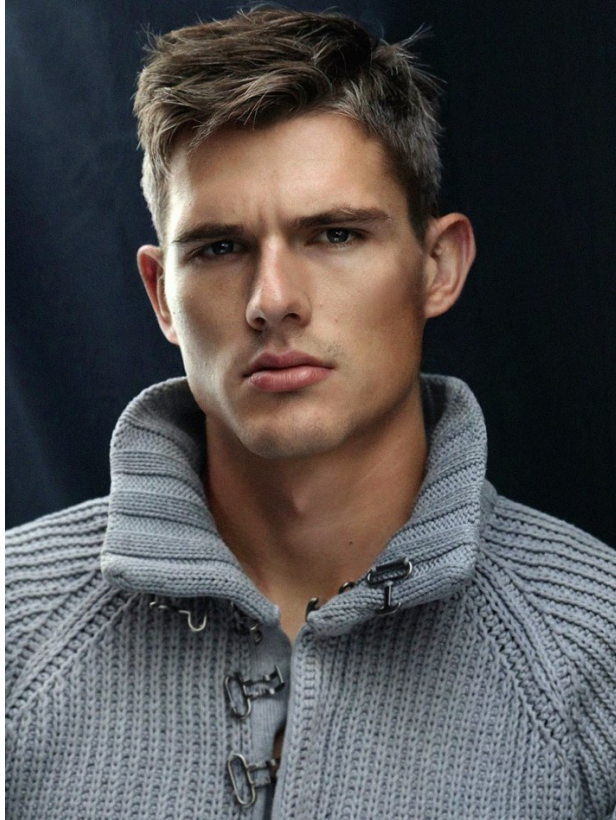
**ARROW**  
»»—  
USA • 1851

CALVIN KING

Height: 188cm Chest: 99cm Waist: 81cm Suit: 40 R Shoe: 10 UK Hair: Grey Brown Eyes: Green/Grey

# BOSS MODELS

CAPE TOWN



## CALVIN KING

Height: 188cm Chest: 99cm Waist: 81cm Suit: 40 R Shoe: 10 UK Hair: Grey Brown Eyes: Green/Grey

# BOSS MODELS

CAPE TOWN

Image: Calvin King represented by Boss Models Cape Town



**CALVIN KING**

Height: 188cm Chest: 99cm Waist: 81cm Suit: 40 R Shoe: 10 UK Hair: Grey Brown Eyes: Green/Grey

# BOSS MODELS

CAPE TOWN



## CALVIN KING

Height: 188cm Chest: 99cm Waist: 81cm Suit: 40 R Shoe: 10 UK Hair: Grey Brown Eyes: Green/Grey

# BOSS MODELS

CAPE TOWN

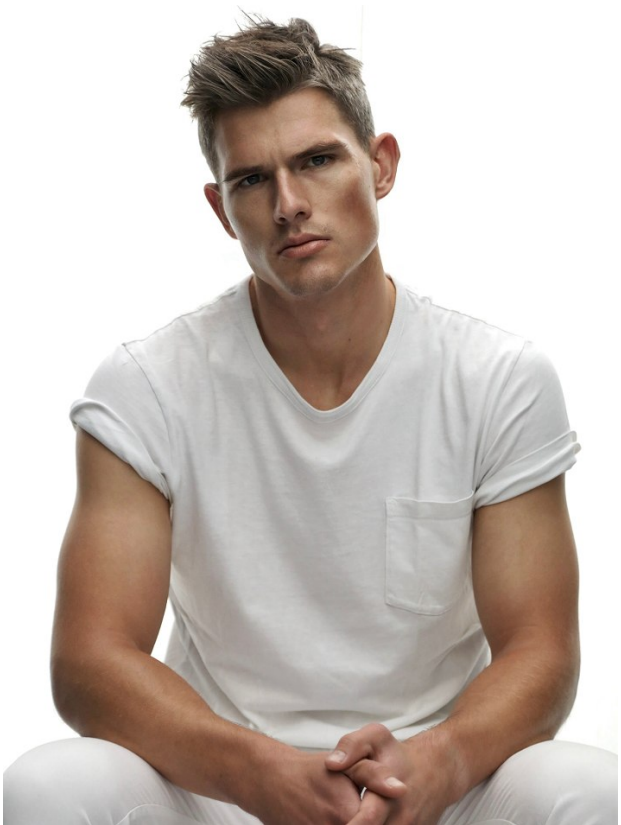


## CALVIN KING

Height: 188cm Chest: 99cm Waist: 81cm Suit: 40 R Shoe: 10 UK Hair: Grey Brown Eyes: Green/Grey

# BOSS MODELS

CAPE TOWN



## CALVIN KING

Height: 188cm Chest: 99cm Waist: 81cm Suit: 40 R Shoe: 10 UK Hair: Grey Brown Eyes: Green/Grey

# BOSS MODELS

CAPE TOWN



**CALVIN KING**

Height: 188cm Chest: 99cm Waist: 81cm Suit: 40 R Shoe: 10 UK Hair: Grey Brown Eyes: Green/Grey