

BOSS MODELS

CAPE TOWN



STUART BELLAMY

Height: 193cm Chest: 106cm Waist: 86cm Suit: 42 L Shoe: 11 UK Hair: Blonde Eyes: Blue

BOSS MODELS

CAPE TOWN

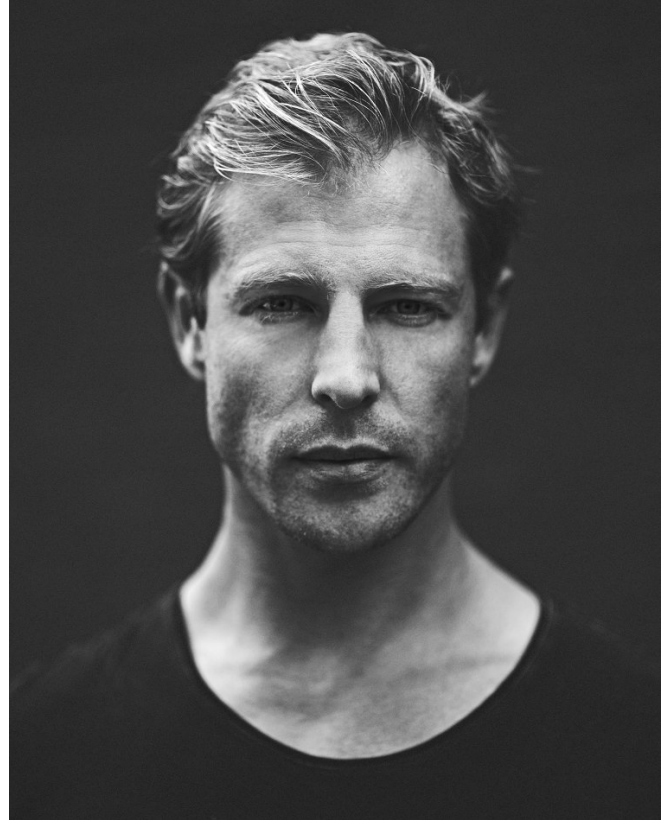


STUART BELLAMY

Height: 193cm Chest: 106cm Waist: 86cm Suit: 42 L Shoe: 11 UK Hair: Blonde Eyes: Blue

BOSS MODELS

CAPE TOWN



GGStyle

HIGH ROLLER

Tip Spend more on designer shades or a classic grey blazer.
Tip Spend less on a turtleneck or rollneck.

SEPTEMBER 2017 GG.CO.ZA 91

STUART BELLAMY

Height: 193cm Chest: 106cm Waist: 86cm Suit: 42 L Shoe: 11 UK Hair: Blonde Eyes: Blue

BOSS MODELS

CAPE TOWN



STUART BELLAMY

Height: 193cm Chest: 106cm Waist: 86cm Suit: 42 L Shoe: 11 UK Hair: Blonde Eyes: Blue

BOSS MODELS

CAPE TOWN



STUART BELLAMY

Height: 193cm Chest: 106cm Waist: 86cm Suit: 42 L Shoe: 11 UK Hair: Blonde Eyes: Blue

BOSS MODELS

CAPE TOWN



FASHION ADVICE **ESSENTIALS**

Mix & Match

A Break your suit up into components, like a blazer that you can pair with other pieces or colours, and grey trousers for a more casual finish.

B An open collared shirt with a retro print creates an interesting effect when layered under a green blazer and over grey pants.

C Other friends to the green and grey family are browns. Consider this colour for accessorising, but choose your pieces wisely. If you're going more retro laid-back, why not a brown leather slipper?

Topman blazer R1 299, shirt R649, pants R740, belt R229, Saint Laurent at SDM eyewear R5 740, Diesel Klets at CJR Gift Sales watch R1 499, Topman shoes R740

Get more style inspiration at GQ.co.za

JULY 2016 **GQ.CO.ZA 27**

STYLIST: JASON ALEXANDER BASSON; FASHION ASSISTANTS: DEBRA PINKHALLA, BOPIELO GUMANA; FASHION INTERN: ISHAP HOUSHAKH; MODEL: STUART BELLAMY; © BOSS MODELS

FASHION ADVICE **ESSENTIALS**

Trendy

A Though not ideal for the office, the trendier approach to suiting is the skinny look. Of course, even with skinny, you need to pay attention to the cut, ensuring that you have enough space in the shoulder and arm.

B When going skinny, if you aren't opting for ultra-slick and minimal, consider layering your shirt with a knit and a matching knitted tie for a little wit.

C The cropped suit length is one that a few men struggle with, but done right it's dashing – and a throwback to the aristocratic dress of yore. As it's winter, make sure you wear a thick pair of socks.

H&M blazer R699, shoes R500, pants R399, tie R299, Ben Sherman shirt R1 549, Polo at SDM eyewear R1 475, Timberland at CJR Gift Sales Dual Analog watch R2 450, Aldo brogues R1 599

JULY 2016 **GQ.CO.ZA 25**

STUART BELLAMY

Height: 193cm Chest: 106cm Waist: 86cm Suit: 42 L Shoe: 11 UK Hair: Blonde Eyes: Blue

BOSS MODELS

CAPE TOWN



STUART BELLAMY

Height: 193cm Chest: 106cm Waist: 86cm Suit: 42 L Shoe: 11 UK Hair: Blonde Eyes: Blue