

BOSS MODELS

CAPE TOWN

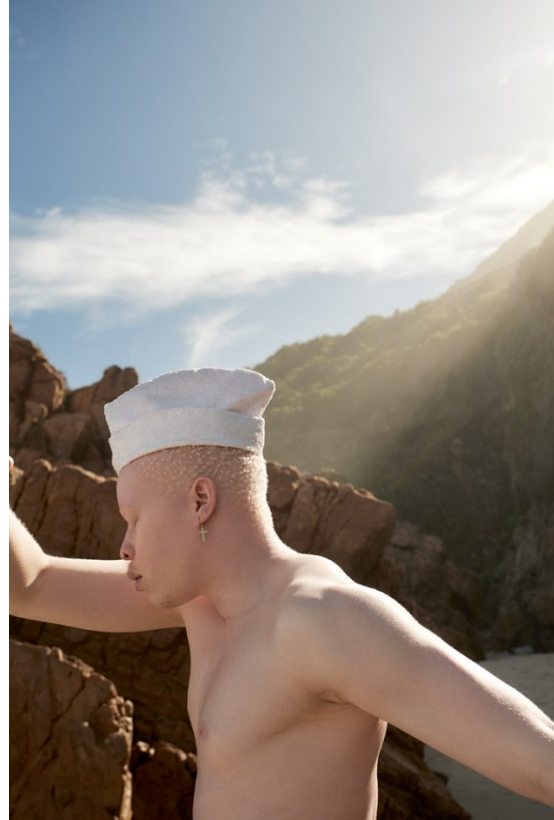


SANELE XABA

Height: 185cm Chest: 99cm Waist: 80cm Suit: 40 R Shoe: 10 UK Hair: Auburn Red Eyes: Green/Brown

BOSS MODELS

CAPE TOWN



SANELE XABA

Height: 185cm Chest: 99cm Waist: 80cm Suit: 40 R Shoe: 10 UK Hair: Auburn Red Eyes: Green/Brown

BOSS MODELS

CAPE TOWN

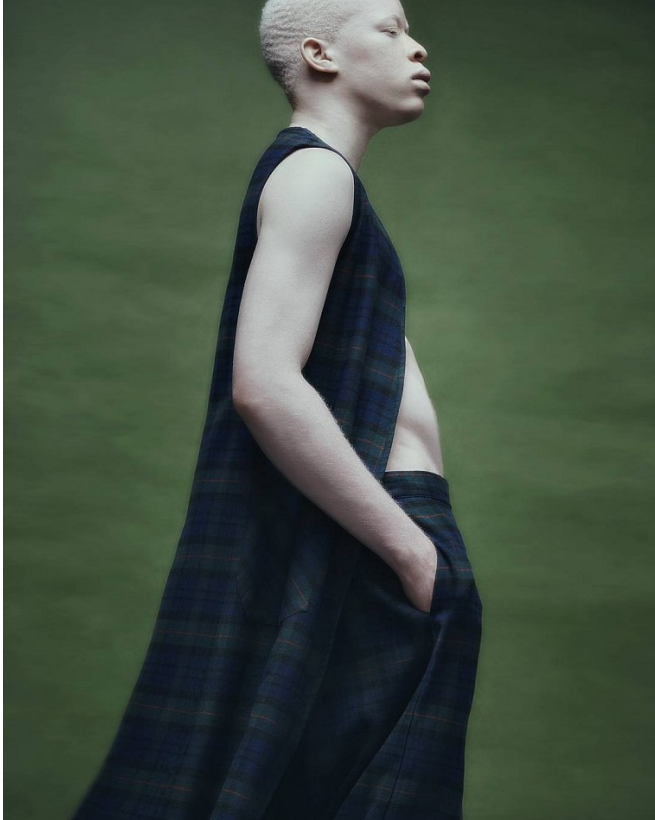


SANELE XABA

Height: 185cm Chest: 99cm Waist: 80cm Suit: 40 R Shoe: 10 UK Hair: Auburn Red Eyes: Green/Brown

BOSS MODELS

CAPE TOWN



**Two
of
a
kind**

Photography: **ULRICH HARTMANN**
Stylist: **OLIVER SAUN**
Hair: **BRUNO MAGLI** / **TOGO** • Phoenix Agency
Models: **Benjamin Schroeder** • **Jan van der Sloot** • **Junior Xaba** • **Boss Models Cape Town**
Postproduction: **Marcus Prince**
Production: **Sophie Schwarzberger**

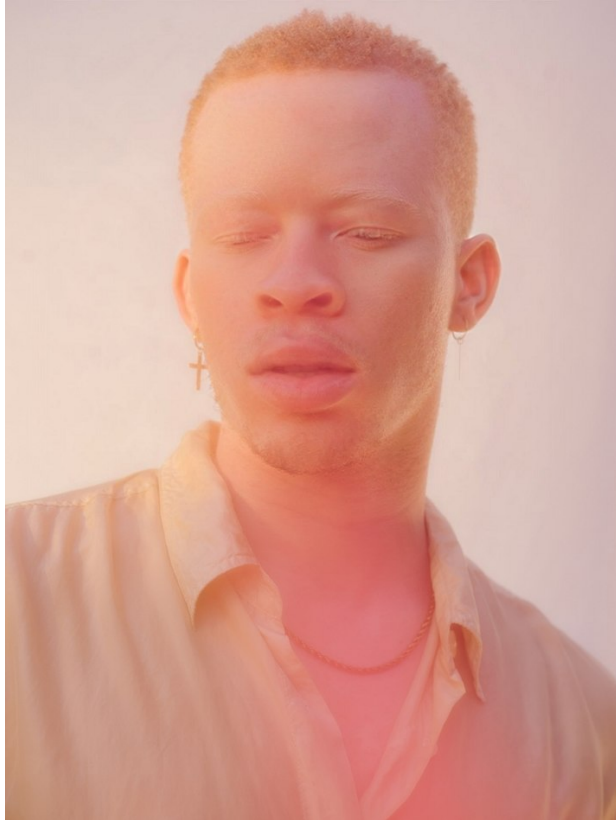
Rechts: T-Shirt
von **ZIMMARELLI**
Sommerkollektion
von **VESSENTIEN**
LAURENT

SANELE XABA

Height: 185cm Chest: 99cm Waist: 80cm Suit: 40 R Shoe: 10 UK Hair: Auburn Red Eyes: Green/Brown

BOSS MODELS

CAPE TOWN



SANELE XABA

Height: 185cm Chest: 99cm Waist: 80cm Suit: 40 R Shoe: 10 UK Hair: Auburn Red Eyes: Green/Brown

BOSS MODELS

CAPE TOWN



SANELE XABA

Height: 185cm Chest: 99cm Waist: 80cm Suit: 40 R Shoe: 10 UK Hair: Auburn Red Eyes: Green/Brown

BOSS MODELS

CAPE TOWN



SANELE XABA

Height: 185cm Chest: 99cm Waist: 80cm Suit: 40 R Shoe: 10 UK Hair: Auburn Red Eyes: Green/Brown

BOSS MODELS

CAPE TOWN



SANELE XABA

Height: 185cm Chest: 99cm Waist: 80cm Suit: 40 R Shoe: 10 UK Hair: Auburn Red Eyes: Green/Brown

BOSS MODELS

CAPE TOWN



SANELE XABA

Height: 185cm Chest: 99cm Waist: 80cm Suit: 40 R Shoe: 10 UK Hair: Auburn Red Eyes: Green/Brown