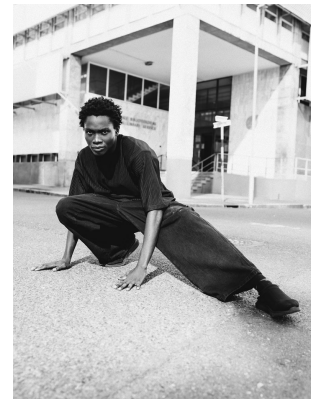
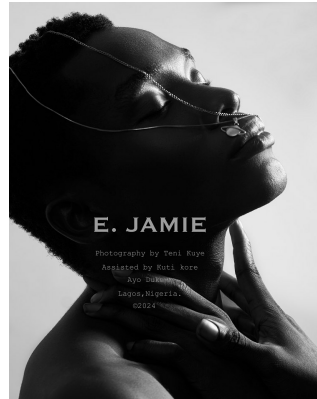


BOSS MODELS

CAPE TOWN

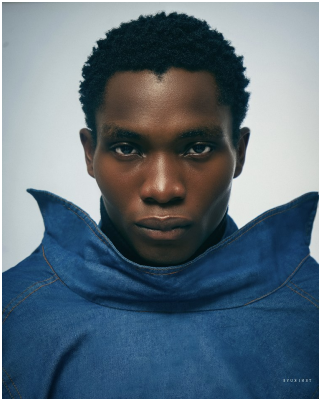


JAMIE EYENOR

Height: 188cm Chest: 93cm Waist: 75cm Suit: 37 L Shoe: 10.5 UK Hair: Black Eyes: Brown

BOSS MODELS

CAPE TOWN



JAMIE EYENOR

Height: 188cm Chest: 93cm Waist: 75cm Suit: 37 L Shoe: 10.5 UK Hair: Black Eyes: Brown