

BOSS MODELS

CAPE TOWN



St. L. Photo: Ricky Coetzee & John
T-shirt: H&M, Coat: Boss, Turtleneck: H&M, Sneakers: H&M
Styling: Tessa Wenzel & John Coetzee & John
All from **LONG PAUL**



SPECIAL

Shacket: Jantek in Pigeon, Navy @ Boss
T-shirt: H&M, Coat: Boss
Turtleneck: H&M, Sneakers: H&M
Styling: Tessa Wenzel & John Coetzee & John
All from **LONG PAUL**

TIME TRAVELER

Styling: Colin Wong
Shoes: Ken Wong
Hair: John Mc
Makeup: John Wong
Styling Assistant: Jesse
Hairdresser: Long Paul

000

TYRON NESS

Height: 188cm Chest: 90cm Waist: 71cm Suit: 36 L Shoe: 10.5 UK Hair: Light Brown Eyes: Blue

000

BOSS MODELS

CAPE TOWN



TYRON NESS

Height: 188cm Chest: 90cm Waist: 71cm Suit: 36 L Shoe: 10.5 UK Hair: Light Brown Eyes: Blue

BOSS MODELS

CAPE TOWN

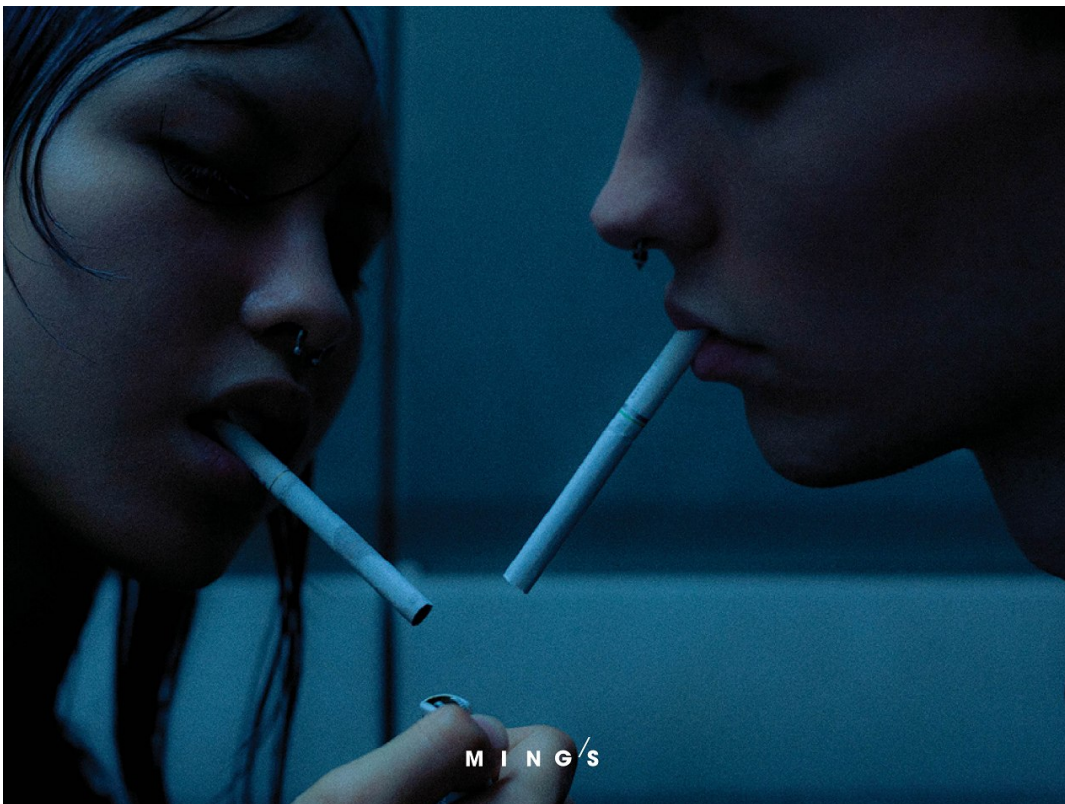


TYRON NESS

Height: 188cm Chest: 90cm Waist: 71cm Suit: 36 L Shoe: 10.5 UK Hair: Light Brown Eyes: Blue

BOSS MODELS

CAPE TOWN

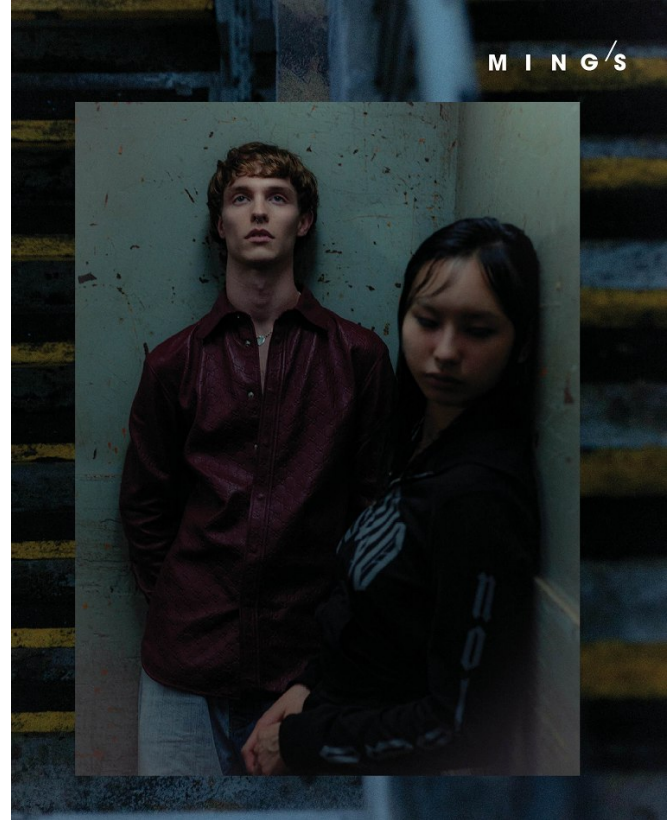
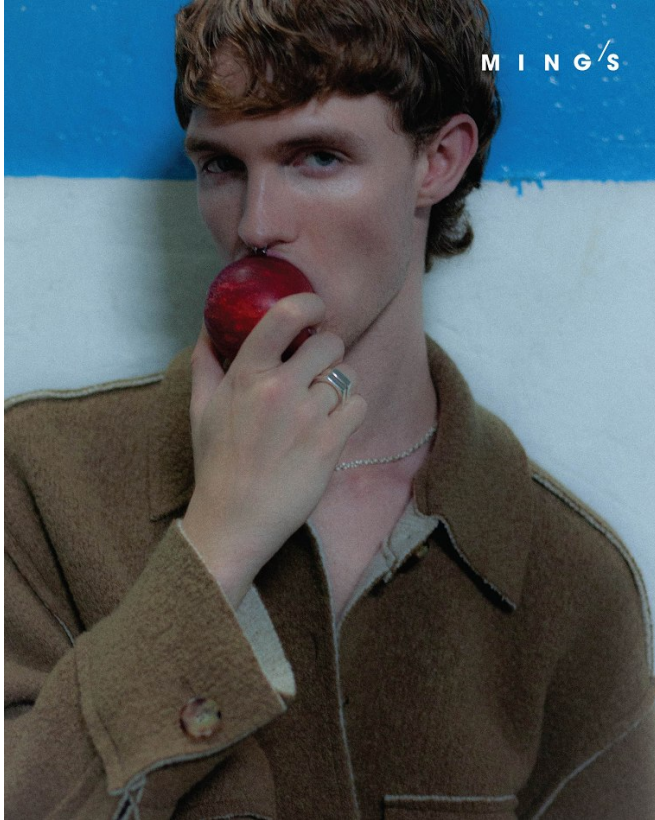


TYRON NESS

Height: 188cm Chest: 90cm Waist: 71cm Suit: 36 L Shoe: 10.5 UK Hair: Light Brown Eyes: Blue

BOSS MODELS

CAPE TOWN



TYRON NESS

Height: 188cm Chest: 90cm Waist: 71cm Suit: 36 L Shoe: 10.5 UK Hair: Light Brown Eyes: Blue

BOSS MODELS

CAPE TOWN



TYRON NESS

Height: 188cm Chest: 90cm Waist: 71cm Suit: 36 L Shoe: 10.5 UK Hair: Light Brown Eyes: Blue

BOSS MODELS

CAPE TOWN



TYRON NESS

Height: 188cm Chest: 90cm Waist: 71cm Suit: 36 L Shoe: 10.5 UK Hair: Light Brown Eyes: Blue

BOSS MODELS

CAPE TOWN



TYRON NESS

Height: 188cm Chest: 90cm Waist: 71cm Suit: 36 L Shoe: 10.5 UK Hair: Light Brown Eyes: Blue

BOSS MODELS

CAPE TOWN



TYRON NESS

Height: 188cm Chest: 90cm Waist: 71cm Suit: 36 L Shoe: 10.5 UK Hair: Light Brown Eyes: Blue

BOSS MODELS

CAPE TOWN



TYRON NESS

Height: 188cm Chest: 90cm Waist: 71cm Suit: 36 L Shoe: 10.5 UK Hair: Light Brown Eyes: Blue