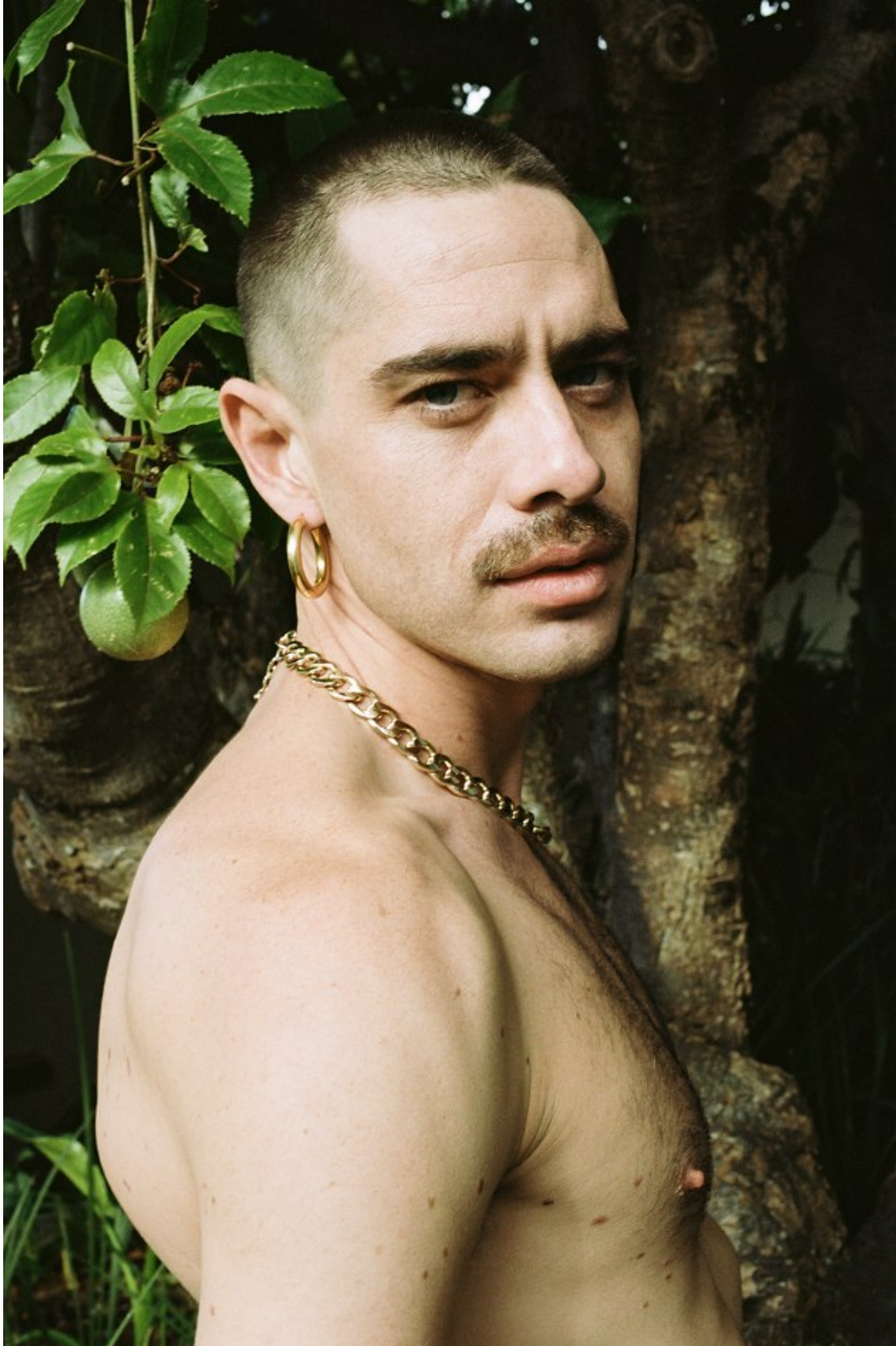


# BOSS MODELS

CAPE TOWN



ANT HINRICHSEN

Height: 187cm Chest: 104cm Waist: 78cm Suit: 42 R Shoe: 11 UK Hair: Brown Eyes: Blue

# BOSS MODELS

CAPE TOWN



ANT HINRICHSEN

Height: 187cm Chest: 104cm Waist: 78cm Suit: 42 R Shoe: 11 UK Hair: Brown Eyes: Blue

# BOSS MODELS

CAPE TOWN



ANT HINRICHSEN

Height: 187cm Chest: 104cm Waist: 78cm Suit: 42 R Shoe: 11 UK Hair: Brown Eyes: Blue

# BOSS MODELS

CAPE TOWN



ANT HINRICHSEN

Height: 187cm Chest: 104cm Waist: 78cm Suit: 42 R Shoe: 11 UK Hair: Brown Eyes: Blue

# BOSS MODELS

CAPE TOWN



ANT HINRICHSEN

Height: 187cm Chest: 104cm Waist: 78cm Suit: 42 R Shoe: 11 UK Hair: Brown Eyes: Blue

# BOSS MODELS

CAPE TOWN



ANT HINRICHSEN

Height: 187cm Chest: 104cm Waist: 78cm Suit: 42 R Shoe: 11 UK Hair: Brown Eyes: Blue

# BOSS MODELS

CAPE TOWN



ANT HINRICHSEN

Height: 187cm Chest: 104cm Waist: 78cm Suit: 42 R Shoe: 11 UK Hair: Brown Eyes: Blue

# BOSS MODELS

CAPE TOWN



ANT HINRICHSEN

Height: 187cm Chest: 104cm Waist: 78cm Suit: 42 R Shoe: 11 UK Hair: Brown Eyes: Blue

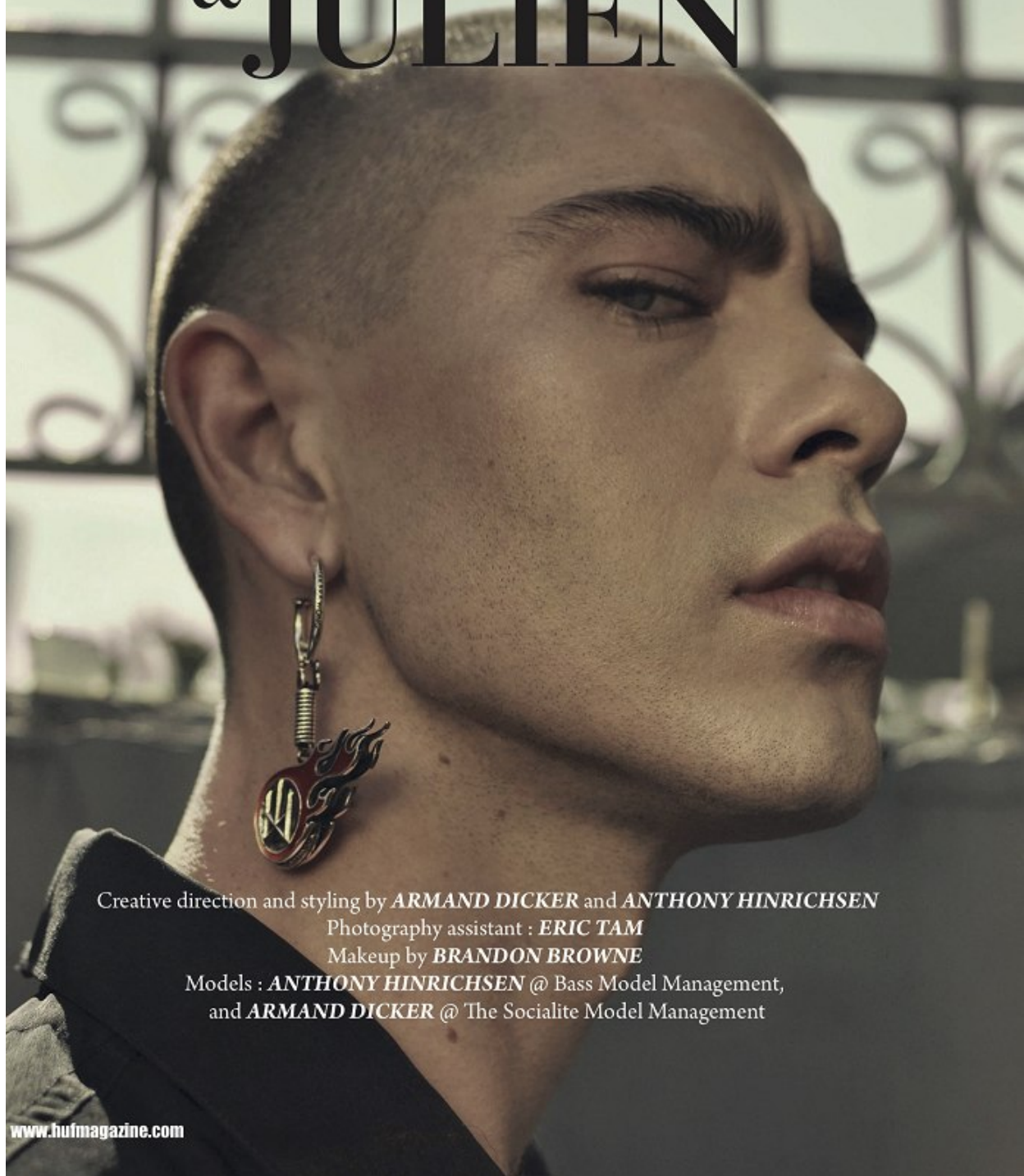


# BOSS MODELS

CAPE TOWN

Photography by *KLAVDIYA FINOGINA*

# ROMEO & JULIEN



Creative direction and styling by *ARMAND DICKER* and *ANTHONY HINRICHSEN*

Photography assistant : *ERIC TAM*

Makeup by *BRANDON BROWNE*

Models : *ANTHONY HINRICHSEN* @ Bass Model Management,  
and *ARMAND DICKER* @ The Socialite Model Management

[www.hufmagazine.com](http://www.hufmagazine.com)

**ANT HINRICHSEN**

Height: 187cm Chest: 104cm Waist: 78cm Suit: 42 R Shoe: 11 UK Hair: Brown Eyes: Blue

# BOSS MODELS

CAPE TOWN



ANT HINRICHSEN

Height: 187cm Chest: 104cm Waist: 78cm Suit: 42 R Shoe: 11 UK Hair: Brown Eyes: Blue

# BOSS MODELS

CAPE TOWN

# CENDRILLON

N.4

la sueur

Adam & Anthony  
by Armand Dicker

ANT HINRICHSEN

Height: 187cm Chest: 104cm Waist: 78cm Suit: 42 R Shoe: 11 UK Hair: Brown Eyes: Blue

# BOSS MODELS

CAPE TOWN



ANT HINRICHSEN

Height: 187cm Chest: 104cm Waist: 78cm Suit: 42 R Shoe: 11 UK Hair: Brown Eyes: Blue

# BOSS MODELS

CAPE TOWN



ANT HINRICHSEN

Height: 187cm Chest: 104cm Waist: 78cm Suit: 42 R Shoe: 11 UK Hair: Brown Eyes: Blue

# BOSS MODELS

CAPE TOWN



INSPIRASI

MOONLIGHTS

PERALIHAN KE MUSIM LURUH SEAKAN MEMASUKI GELOMBANG BARU FESYEN LELAKI. MENGIMBANGI BERSAMA PERSALINAN MUSIM PANAS 2019 SERTA REKAAN PRA-MUSIM LURUH 2019 MEMUNCULKAN PERSPEKTIF FESYEN ANTI KONVENSIONAL. IT LOOKS 'BADDER' THAN EVER.

### LEAN ON ME

SUNGGUHPUN REKAAN EKSTRA HANGAT DIPERKATAKAN KEBELAKANGAN IML, NAMUN IA BUKAN ALASAN BUAT RALPH LAUREN DAN DIOR MEN UNTUK TIDAK MENGHADIRKAN REKAAN YANG SEDERHANA 'FEEL' NYA, 'NOT BASIC BUT CLASSIC' ITEM KLASIK YANG DITAWARKAN, MENAMBAHKIS STEREOTIP BAHAN PEMAKAIAN SEDERHANA ATAU SUBTLE TAK CUKUP ASPEK 'FASHION' NYA, SEMAKIN SEMANGAT POSITIF DALAM PERALIHAN FESYEN PATUT DIGEMILANGKAN.

ARMAND: KEMEJA TAPIS & SELUAR: SALVATORE FERRAGAMO, BAJU LENGAN PANJANG: RALPH LAUREN PURPLE LABEL

ANTHONY: SEMUA NYA DARIPADA DIOR MEN

20. [glamlaki.my](http://glamlaki.my)

ANT HINRICHSEN

Height: 187cm Chest: 104cm Waist: 78cm Suit: 42 R Shoe: 11 UK Hair: Brown Eyes: Blue

# BOSS MODELS

CAPE TOWN



Left page  
(Anthony)  
Choker by *Unrealistic*  
Shirt by *Takara Wong*  
Necklace by *Takara Wong x Missile*

(Almond)  
Rings by *Takara Wong x Missile*

Right page  
Jacket and jeans by *Levi's x Lalalove*

[www.hufmagazine.com](http://www.hufmagazine.com)

ANT HINRICHSEN

Height: 187cm Chest: 104cm Waist: 78cm Suit: 42 R Shoe: 11 UK Hair: Brown Eyes: Blue

# BOSS MODELS

CAPE TOWN

# LOIKE

## Fancy That

PHOTOGRAPHER ARMAND DICKER  
MODEL ANTHONY HINRICHSEN  
CREATIVE DIRECTOR & STYLIST ARMAND DICKER  
& ANTHONY HINRICHSEN  
WORDS KYLE BOSHOFF  
AGENCY BOSS MODELS SOUTH AFRICA

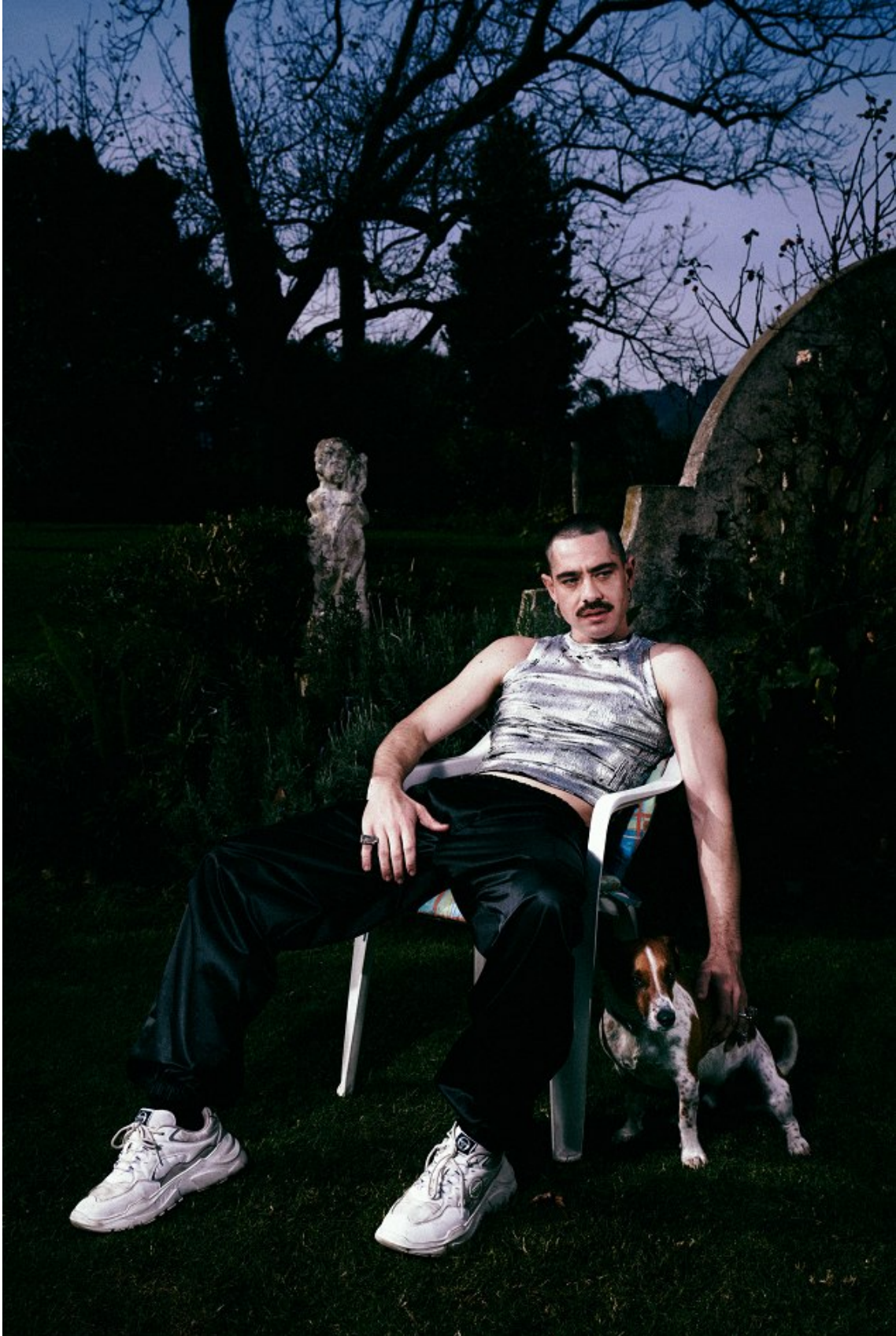
ANT HINRICHSEN

Height: 187cm Chest: 104cm Waist: 78cm Suit: 42 R Shoe: 11 UK Hair: Brown Eyes: Blue



# BOSS MODELS

CAPE TOWN

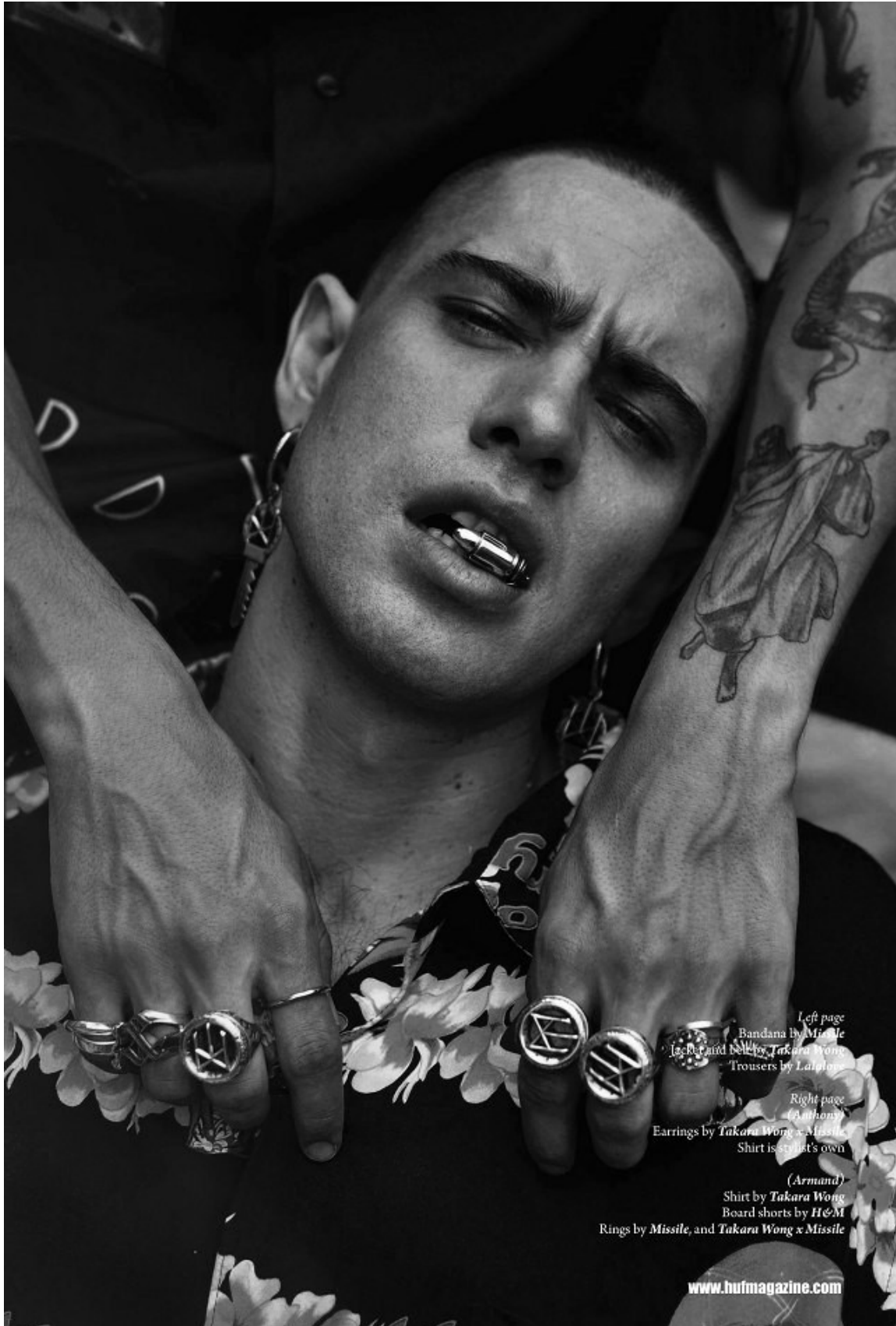


ANT HINRICHSEN

Height: 187cm Chest: 104cm Waist: 78cm Suit: 42 R Shoe: 11 UK Hair: Brown Eyes: Blue

# BOSS MODELS

CAPE TOWN



Left page  
Bandana by Missile  
Jacket and belt by Takara Wong  
Trousers by Lalaya

Right page  
(Anthony)  
Earrings by Takara Wong x Missile  
Shirt is artist's own

(Armand)  
Shirt by Takara Wong  
Board shorts by H&M  
Rings by Missile, and Takara Wong x Missile

[www.hufmagazine.com](http://www.hufmagazine.com)

## ANT HINRICHSEN

Height: 187cm Chest: 104cm Waist: 78cm Suit: 42 R Shoe: 11 UK Hair: Brown Eyes: Blue

# BOSS MODELS

CAPE TOWN



David Han Leather jacket;  
Kit Woo Cotton panelled  
sweat shirt & trousers;  
Palladium Fa iris boots

ANT HINRICHSEN

Height: 187cm Chest: 104cm Waist: 78cm Suit: 42 R Shoe: 11 UK Hair: Brown Eyes: Blue

# BOSS MODELS

CAPE TOWN



ANT HINRICHSEN

Height: 187cm Chest: 104cm Waist: 78cm Suit: 42 R Shoe: 11 UK Hair: Brown Eyes: Blue

# BOSS MODELS

CAPE TOWN



ANT HINRICHSEN

Height: 187cm Chest: 104cm Waist: 78cm Suit: 42 R Shoe: 11 UK Hair: Brown Eyes: Blue

# BOSS MODELS

CAPE TOWN



ANT HINRICHSEN

Height: 187cm Chest: 104cm Waist: 78cm Suit: 42 R Shoe: 11 UK Hair: Brown Eyes: Blue

# BOSS MODELS

CAPE TOWN



**LOIKE**

ANT HINRICHSEN

Height: 187cm Chest: 104cm Waist: 78cm Suit: 42 R Shoe: 11 UK Hair: Brown Eyes: Blue

# BOSS MODELS

CAPE TOWN



## ANT HINRICHSEN

Height: 187cm Chest: 104cm Waist: 78cm Suit: 42 R Shoe: 11 UK Hair: Brown Eyes: Blue



# BOSS MODELS

CAPE TOWN



ANT HINRICHSEN

Height: 187cm Chest: 104cm Waist: 78cm Suit: 42 R Shoe: 11 UK Hair: Brown Eyes: Blue

# BOSS MODELS

CAPE TOWN



ANT HINRICHSEN

Height: 187cm Chest: 104cm Waist: 78cm Suit: 42 R Shoe: 11 UK Hair: Brown Eyes: Blue

# BOSS MODELS

CAPE TOWN



ANT HINRICHSEN

Height: 187cm Chest: 104cm Waist: 78cm Suit: 42 R Shoe: 11 UK Hair: Brown Eyes: Blue

# BOSS MODELS

CAPE TOWN



ANT HINRICHSEN

Height: 187cm Chest: 104cm Waist: 78cm Suit: 42 R Shoe: 11 UK Hair: Brown Eyes: Blue

# BOSS MODELS

CAPE TOWN



ANT HINRICHSEN

Height: 187cm Chest: 104cm Waist: 78cm Suit: 42 R Shoe: 11 UK Hair: Brown Eyes: Blue