

# BOSS MODELS

CAPE TOWN



TIAAN KOTZE

Height: 187cm Chest: 103cm Waist: 83cm Suit: 40.5 R Shoe: 11.5 UK Hair: Brown Eyes: Green

# BOSS MODELS

CAPE TOWN



TIAAN KOTZE

Height: 187cm Chest: 103cm Waist: 83cm Suit: 40.5 R Shoe: 11.5 UK Hair: Brown Eyes: Green



# BOSS MODELS

CAPE TOWN



TIAAN KOTZE

Height: 187cm Chest: 103cm Waist: 83cm Suit: 40.5 R Shoe: 11.5 UK Hair: Brown Eyes: Green



# BOSS MODELS

CAPE TOWN



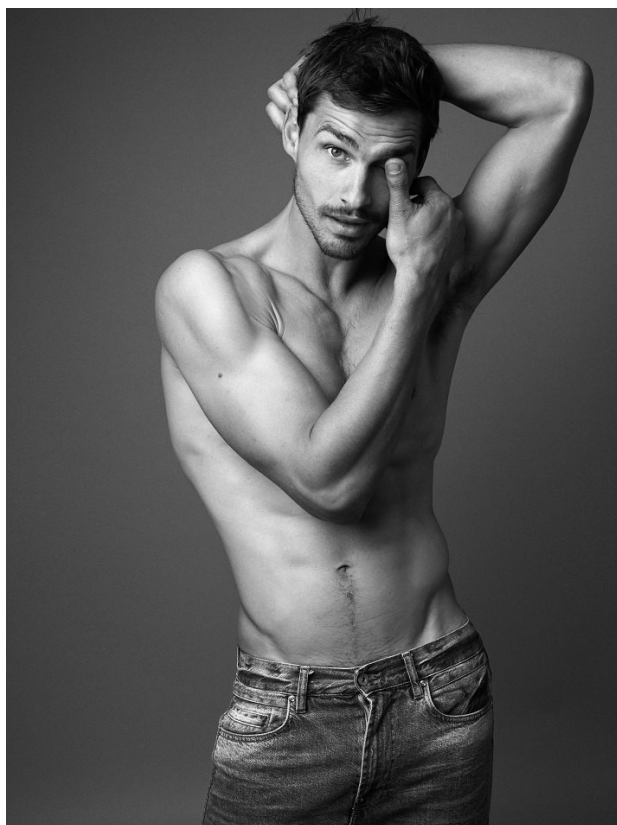
## TIAAN KOTZE

Height: 187cm Chest: 103cm Waist: 83cm Suit: 40.5 R Shoe: 11.5 UK Hair: Brown Eyes: Green



# BOSS MODELS

CAPE TOWN



TIAAN KOTZE

Height: 187cm Chest: 103cm Waist: 83cm Suit: 40.5 R Shoe: 11.5 UK Hair: Brown Eyes: Green

# BOSS MODELS

CAPE TOWN



TIAAN KOTZE

Height: 187cm Chest: 103cm Waist: 83cm Suit: 40.5 R Shoe: 11.5 UK Hair: Brown Eyes: Green



# BOSS MODELS

CAPE TOWN



TIAAN KOTZE

Height: 187cm Chest: 103cm Waist: 83cm Suit: 40.5 R Shoe: 11.5 UK Hair: Brown Eyes: Green

# BOSS MODELS

CAPE TOWN



TIAAN KOTZE

Height: 187cm Chest: 103cm Waist: 83cm Suit: 40.5 R Shoe: 11.5 UK Hair: Brown Eyes: Green



# BOSS MODELS

CAPE TOWN



TIAAN KOTZE

Height: 187cm Chest: 103cm Waist: 83cm Suit: 40.5 R Shoe: 11.5 UK Hair: Brown Eyes: Green



# BOSS MODELS

CAPE TOWN



STYLE

Moving into the warmer months, the look is still snug, but with a lighter weight of denim and with far fewer layers. Go for a classic pairing of items, as these will help simplify your style.

Levi's sweater R899.  
G-Star Raw jeans R2 299. Replay shoes R3 700

108 00A.CA.ZA SEPTEMBER 2015

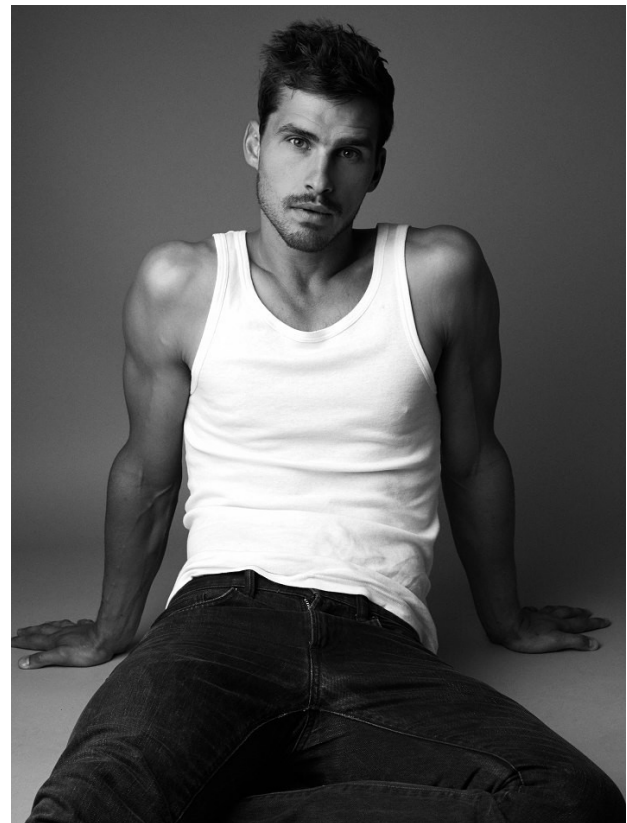


STYLE

You need some sole... chunky soles.

We're going for a bit of a Hedi Slimane homage here, so the shoe - while on the smarter side - needs a bit of an indie twist. Rather than going for Dr.Martens, which would read a bit too punk, a chunky oxford or low ankle boot will do. As for the whole style, we're keeping things streamlined (not skinny), but with a few serious, shady undertones. (2)

Craig Port henley R299. Calvin Klein jeans R2 999. Clarks brogues R2 390



TIAAN KOTZE

Height: 187cm Chest: 103cm Waist: 83cm Suit: 40.5 R Shoe: 11.5 UK Hair: Brown Eyes: Green



# BOSS MODELS

CAPE TOWN



TIAAN KOTZE

Height: 187cm Chest: 103cm Waist: 83cm Suit: 40.5 R Shoe: 11.5 UK Hair: Brown Eyes: Green

# BOSS MODELS

CAPE TOWN



TIAAN KOTZE

Height: 187cm Chest: 103cm Waist: 83cm Suit: 40.5 R Shoe: 11.5 UK Hair: Brown Eyes: Green