

BOSS MODELS

CAPE TOWN



SEBASTIAN SAUVE

Height: 191cm Chest: 102cm Waist: 84cm Suit: 40 L Shoe: 11 UK Hair: Light Brown Eyes: Blue

BOSS MODELS

CAPE TOWN

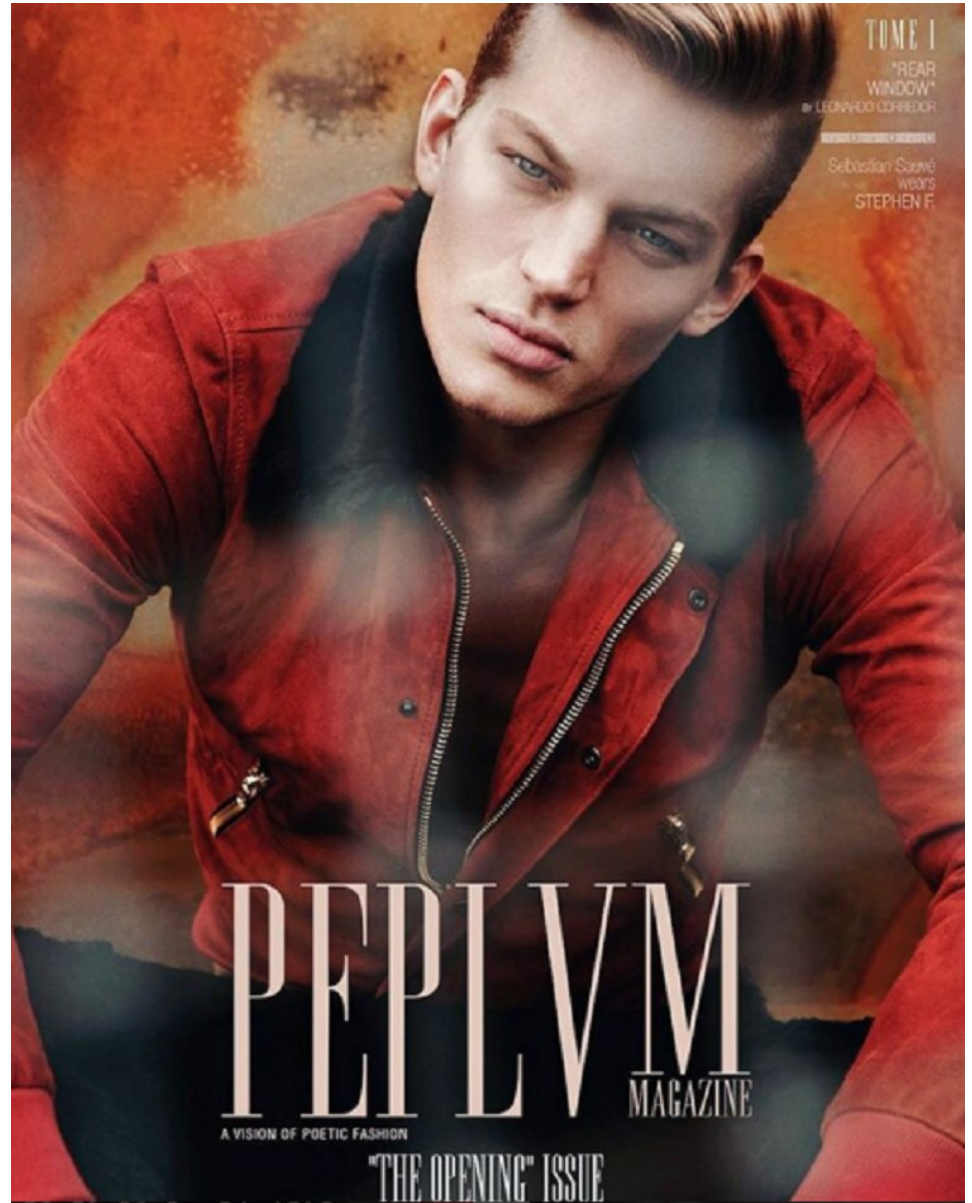


SEBASTIAN SAUVE

Height: 191cm Chest: 102cm Waist: 84cm Suit: 40 L Shoe: 11 UK Hair: Light Brown Eyes: Blue

BOSS MODELS

CAPE TOWN

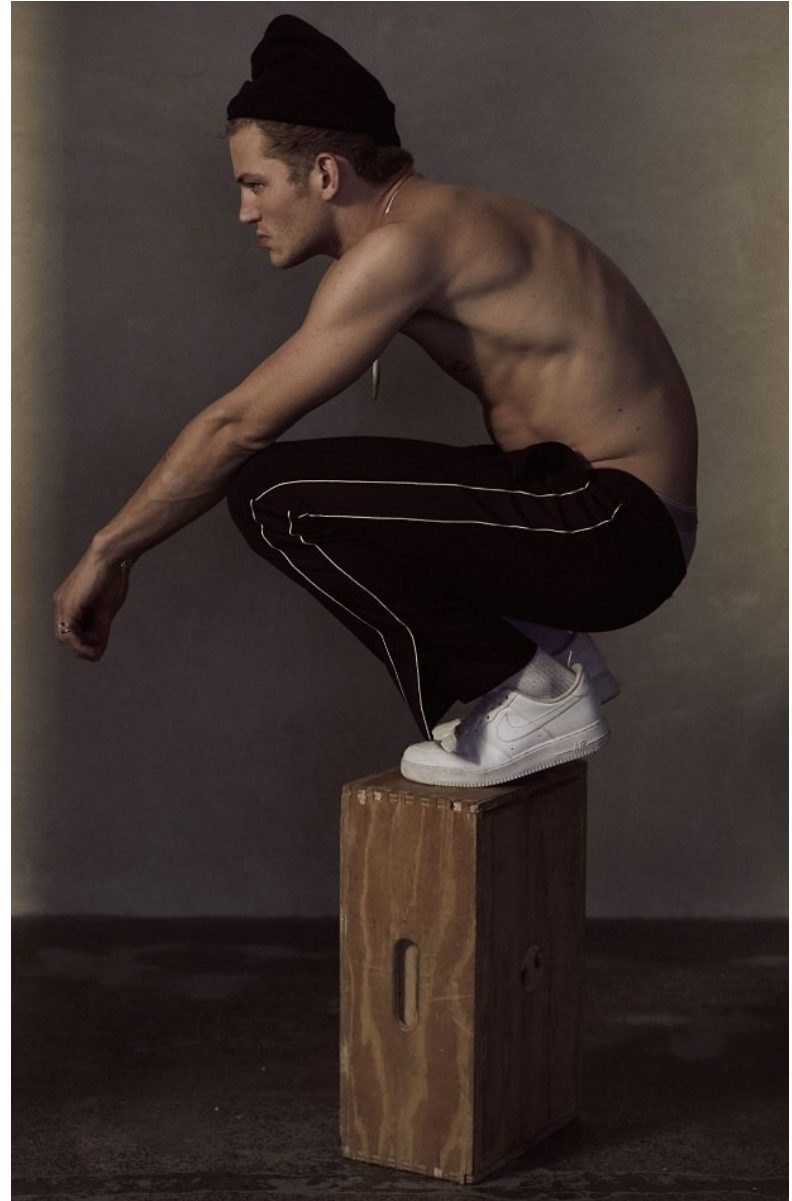


SEBASTIAN SAUVE

Height: 191cm Chest: 102cm Waist: 84cm Suit: 40 L Shoe: 11 UK Hair: Light Brown Eyes: Blue

BOSS MODELS

CAPE TOWN



SEBASTIAN SAUVE

Height: 191cm Chest: 102cm Waist: 84cm Suit: 40 L Shoe: 11 UK Hair: Light Brown Eyes: Blue

BOSS MODELS

CAPE TOWN



SEBASTIAN SAUVE

Height: 191cm Chest: 102cm Waist: 84cm Suit: 40 L Shoe: 11 UK Hair: Light Brown Eyes: Blue

BOSS MODELS

CAPE TOWN



SEBASTIAN SAUVE

Height: 191cm Chest: 102cm Waist: 84cm Suit: 40 L Shoe: 11 UK Hair: Light Brown Eyes: Blue

BOSS MODELS

CAPE TOWN

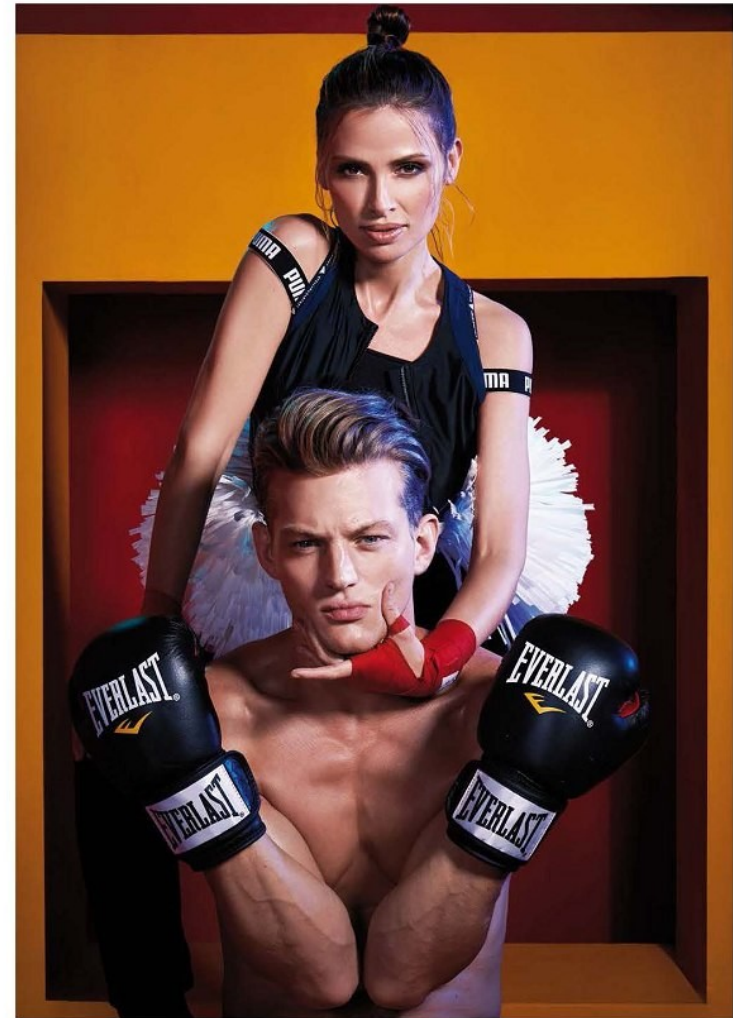


SEBASTIAN SAUVE

Height: 191cm Chest: 102cm Waist: 84cm Suit: 40 L Shoe: 11 UK Hair: Light Brown Eyes: Blue

BOSS MODELS

CAPE TOWN



Febrero 2018 - Influencers 12/5

SEBASTIAN SAUVE

Height: 191cm Chest: 102cm Waist: 84cm Suit: 40 L Shoe: 11 UK Hair: Light Brown Eyes: Blue

BOSS MODELS

CAPE TOWN



SEBASTIAN SAUVE

Height: 191cm Chest: 102cm Waist: 84cm Suit: 40 L Shoe: 11 UK Hair: Light Brown Eyes: Blue

BOSS MODELS

CAPE TOWN



SEBASTIAN SAUVE

Height: 191cm Chest: 102cm Waist: 84cm Suit: 40 L Shoe: 11 UK Hair: Light Brown Eyes: Blue

BOSS MODELS

CAPE TOWN



นี่คือแบบร่างของ
สินค้าและอุปกรณ์
ที่มอบให้
ผู้ทรงอิทธิพล
ทั้งหมดจาก
Givenchy

SEBASTIAN SAUVE

Height: 191cm Chest: 102cm Waist: 84cm Suit: 40 L Shoe: 11 UK Hair: Light Brown Eyes: Blue

BOSS MODELS

CAPE TOWN



Grooming Matt Raine at One Represents, using BUMBLE AND BUMBLE, digital operator Mark Arrigo, photographer's assistants Sam Hearn and Skye Barr, fashion assistants Sam Carder, Kameron Rajput and Itunu Oke, grooming assistant Luke Cooke, model Sebastian at Premier Model Management



SEBASTIAN SAUVE

Height: 191cm Chest: 102cm Waist: 84cm Suit: 40 L Shoe: 11 UK Hair: Light Brown Eyes: Blue

BOSS MODELS

CAPE TOWN

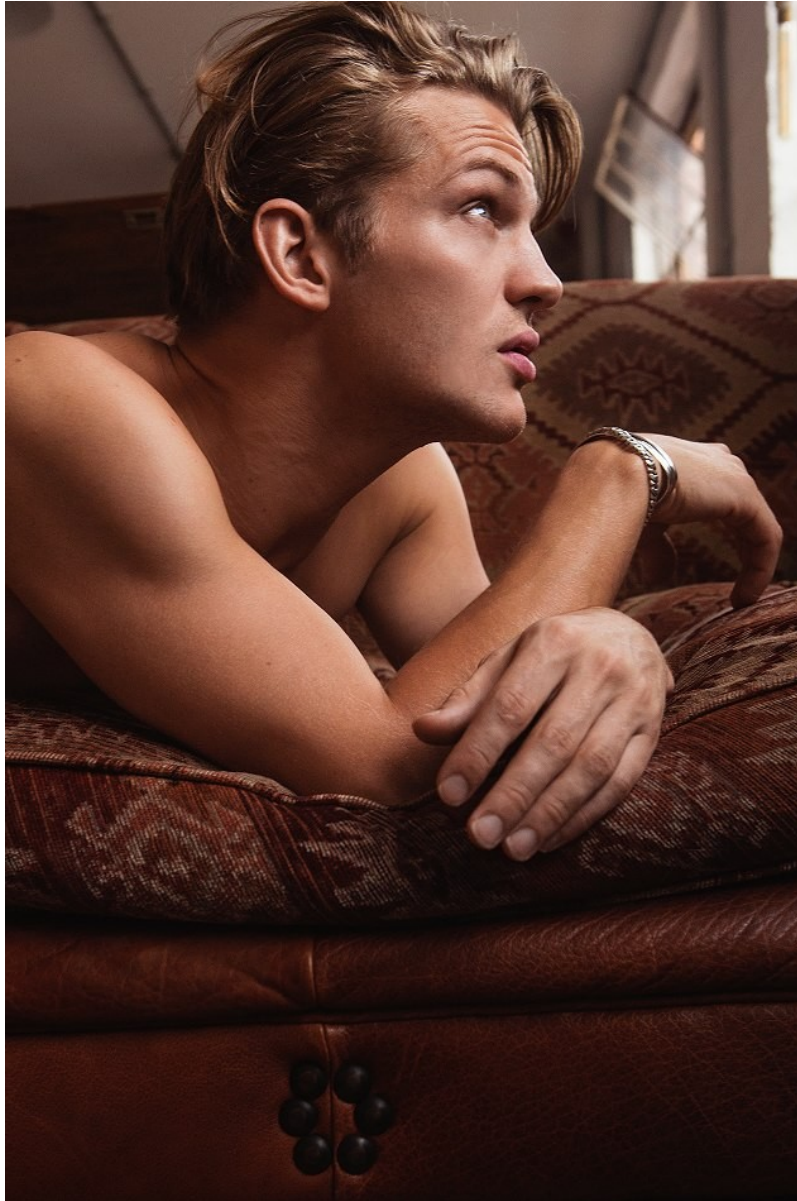


SEBASTIAN SAUVE

Height: 191cm Chest: 102cm Waist: 84cm Suit: 40 L Shoe: 11 UK Hair: Light Brown Eyes: Blue

BOSS MODELS

CAPE TOWN



SEBASTIAN SAUVE

Height: 191cm Chest: 102cm Waist: 84cm Suit: 40 L Shoe: 11 UK Hair: Light Brown Eyes: Blue

BOSS MODELS

CAPE TOWN



© Brice Hardin 2014

LASH MAGAZINE

SEBASTIAN SAUVE

Height: 191cm Chest: 102cm Waist: 84cm Suit: 40 L Shoe: 11 UK Hair: Light Brown Eyes: Blue

BOSS MODELS

CAPE TOWN



SEBASTIAN SAUVE

Height: 191cm Chest: 102cm Waist: 84cm Suit: 40 L Shoe: 11 UK Hair: Light Brown Eyes: Blue

BOSS MODELS

CAPE TOWN

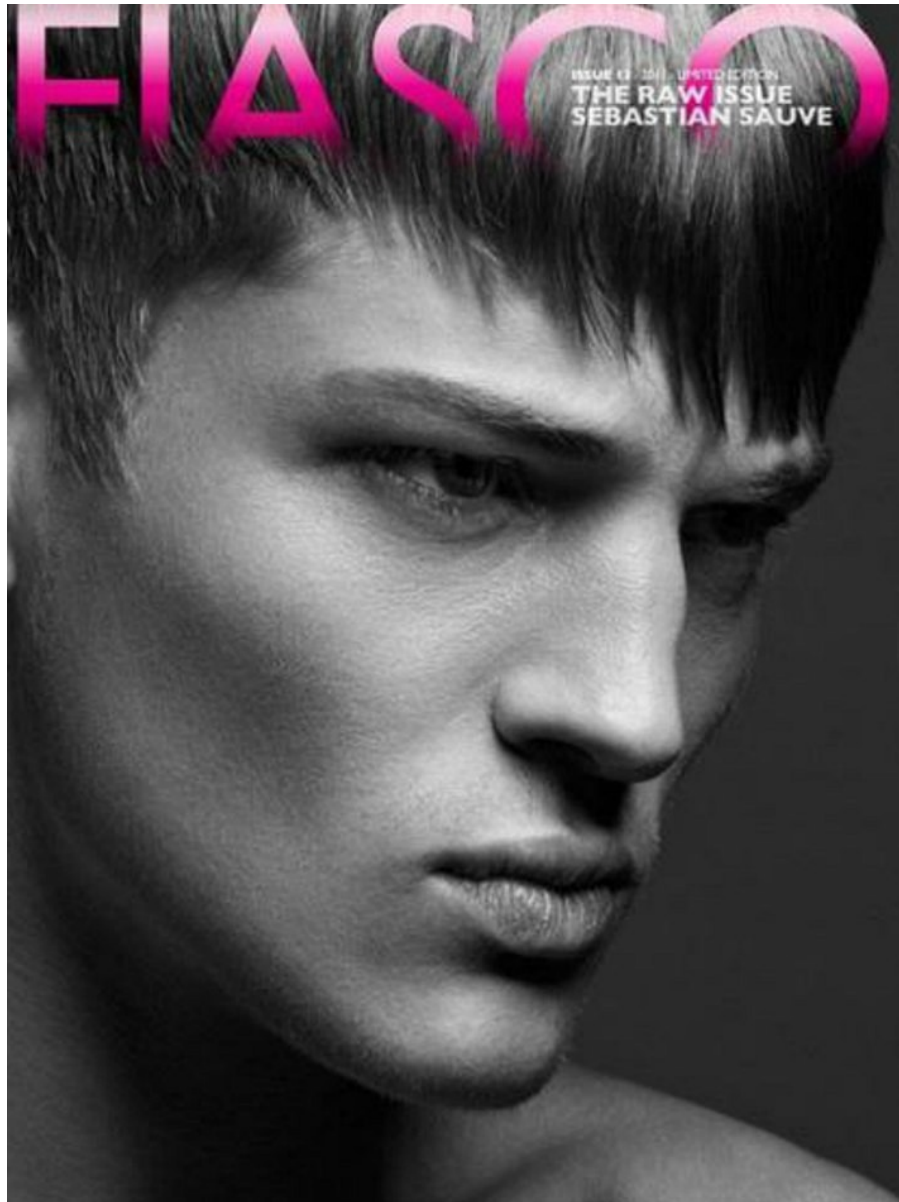


SEBASTIAN SAUVE

Height: 191cm Chest: 102cm Waist: 84cm Suit: 40 L Shoe: 11 UK Hair: Light Brown Eyes: Blue

BOSS MODELS

CAPE TOWN



SEBASTIAN SAUVE

Height: 191cm Chest: 102cm Waist: 84cm Suit: 40 L Shoe: 11 UK Hair: Light Brown Eyes: Blue

BOSS MODELS

CAPE TOWN



LAB 4



SEBASTIAN SAUVE

Height: 191cm Chest: 102cm Waist: 84cm Suit: 40 L Shoe: 11 UK Hair: Light Brown Eyes: Blue

BOSS MODELS

CAPE TOWN



SEBASTIAN SAUVE

Height: 191cm Chest: 102cm Waist: 84cm Suit: 40 L Shoe: 11 UK Hair: Light Brown Eyes: Blue

BOSS MODELS

CAPE TOWN

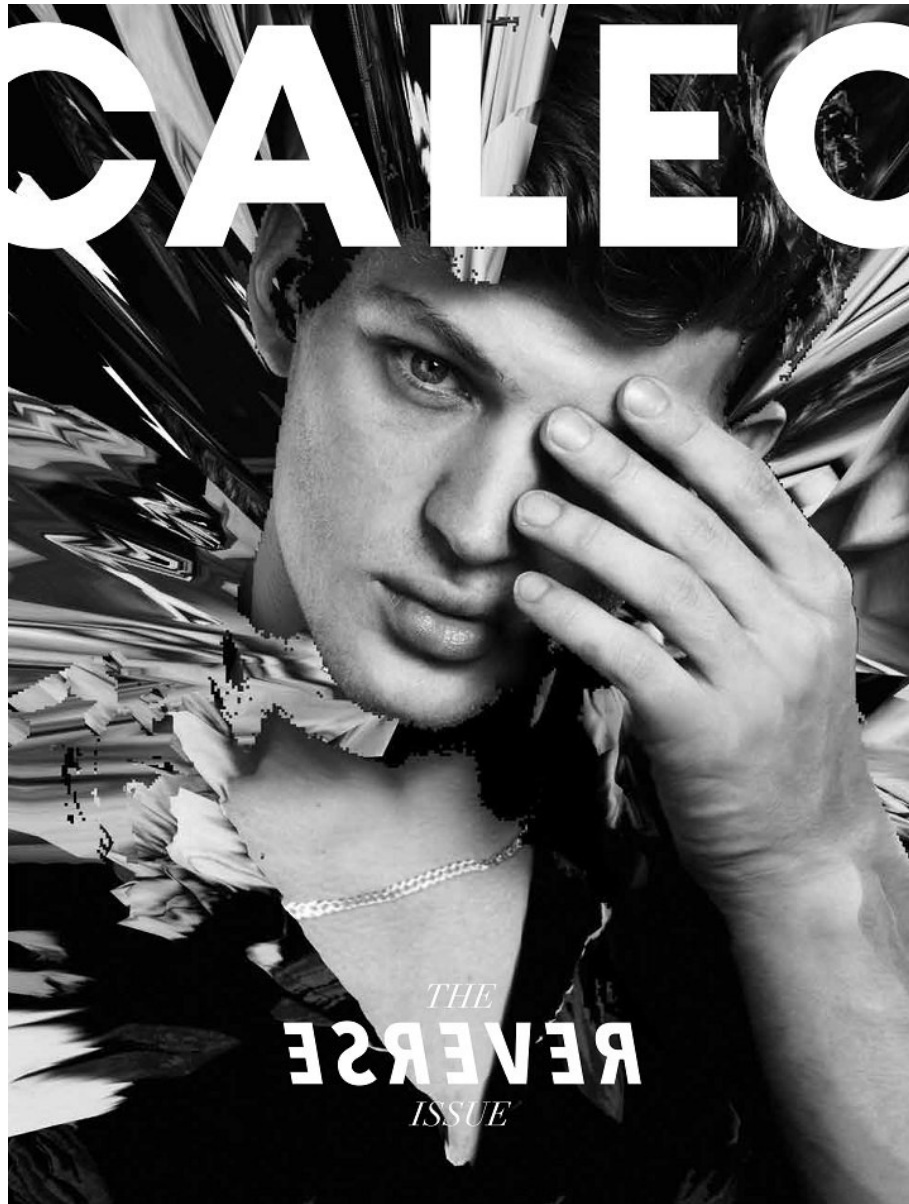


SEBASTIAN SAUVE

Height: 191cm Chest: 102cm Waist: 84cm Suit: 40 L Shoe: 11 UK Hair: Light Brown Eyes: Blue

BOSS MODELS

CAPE TOWN



SEBASTIAN SAUVE

Height: 191cm Chest: 102cm Waist: 84cm Suit: 40 L Shoe: 11 UK Hair: Light Brown Eyes: Blue

BOSS MODELS

CAPE TOWN

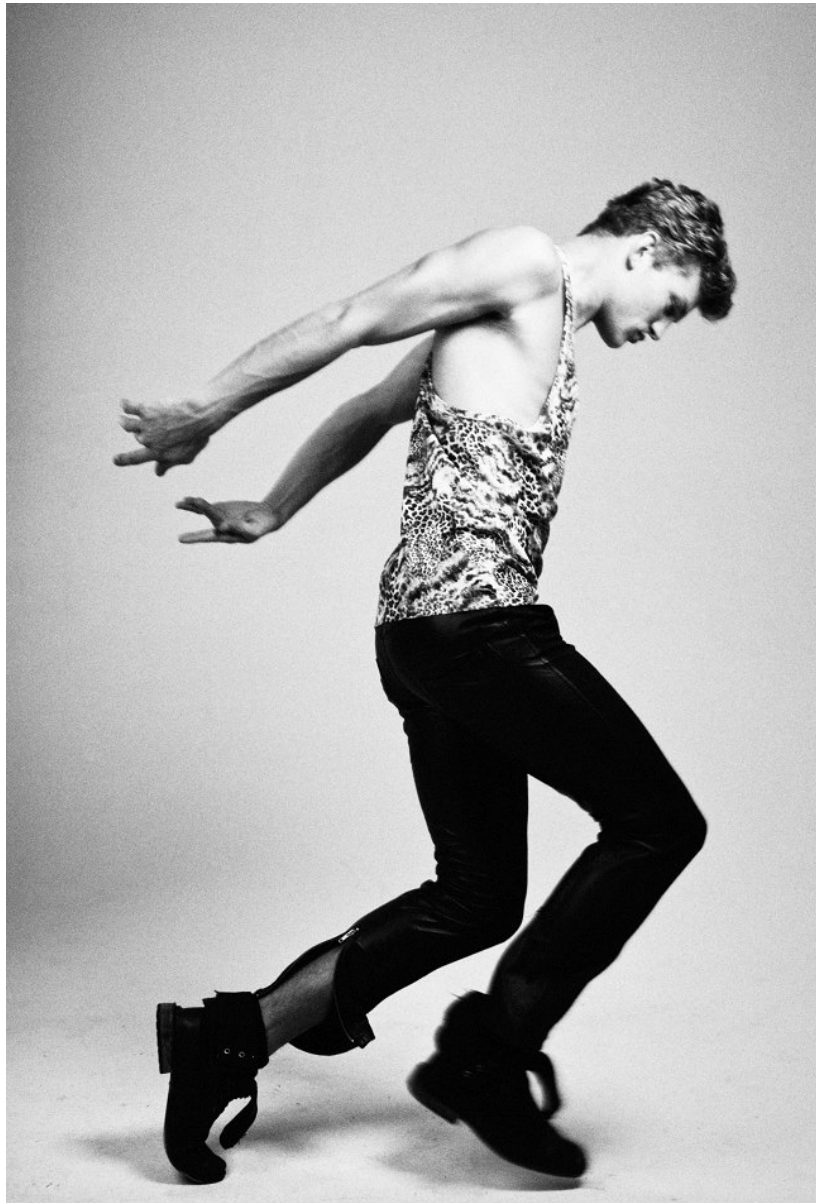


SEBASTIAN SAUVE

Height: 191cm Chest: 102cm Waist: 84cm Suit: 40 L Shoe: 11 UK Hair: Light Brown Eyes: Blue

BOSS MODELS

CAPE TOWN



SEBASTIAN SAUVE

Height: 191cm Chest: 102cm Waist: 84cm Suit: 40 L Shoe: 11 UK Hair: Light Brown Eyes: Blue

BOSS MODELS

CAPE TOWN



SEBASTIAN SAUVE

Height: 191cm Chest: 102cm Waist: 84cm Suit: 40 L Shoe: 11 UK Hair: Light Brown Eyes: Blue

BOSS MODELS

CAPE TOWN



Prada

DIE KOLLEKTION

Seit langem nicht alles Designierte
Musica Prada präsentiert für die
bestimmten Monate eine ganz neue
und schöne Kollektion. Es gibt sehr
hohe geometrische Schuhe und nur
wenig Farben, hauptsächlich Blau,
Bordeaux, Weiß und Beige. Auch in
Seiten, Versierungen hat sie auf die
Bühnen gebracht - formatfarbene
Kleider bilden die einzige Ausnahme.

BESTES BEISPIEL

Langärmeliger MAATCHI, ein Kleid,
mit um 2270 Euro. 2 Kleiderkapseln
SANTORI mit einem leichten, weiß
abgewaschenen Stoff mit Ausmaß, um
390 Euro. 2 HÖSE mit Vordruck, um
490 Euro. 2 SLIPPERS von Martin
Maggiore, um 340 Euro.

SEBASTIAN SAUVE

Height: 191cm Chest: 102cm Waist: 84cm Suit: 40 L Shoe: 11 UK Hair: Light Brown Eyes: Blue

BOSS MODELS

CAPE TOWN



SEBASTIAN SAUVE

Height: 191cm Chest: 102cm Waist: 84cm Suit: 40 L Shoe: 11 UK Hair: Light Brown Eyes: Blue

BOSS MODELS

CAPE TOWN



SEBASTIAN SAUVE

Height: 191cm Chest: 102cm Waist: 84cm Suit: 40 L Shoe: 11 UK Hair: Light Brown Eyes: Blue

BOSS MODELS

CAPE TOWN



Pure-cotton longer length tee from R150 | 502606116
lightweight hoodie from R250 | 502606826
pure-cotton skinny-fit chinos with stretch from R325 | 502277816

SEBASTIAN SAUVE

Height: 191cm Chest: 102cm Waist: 84cm Suit: 40 L Shoe: 11 UK Hair: Light Brown Eyes: Blue

BOSS MODELS

CAPE TOWN

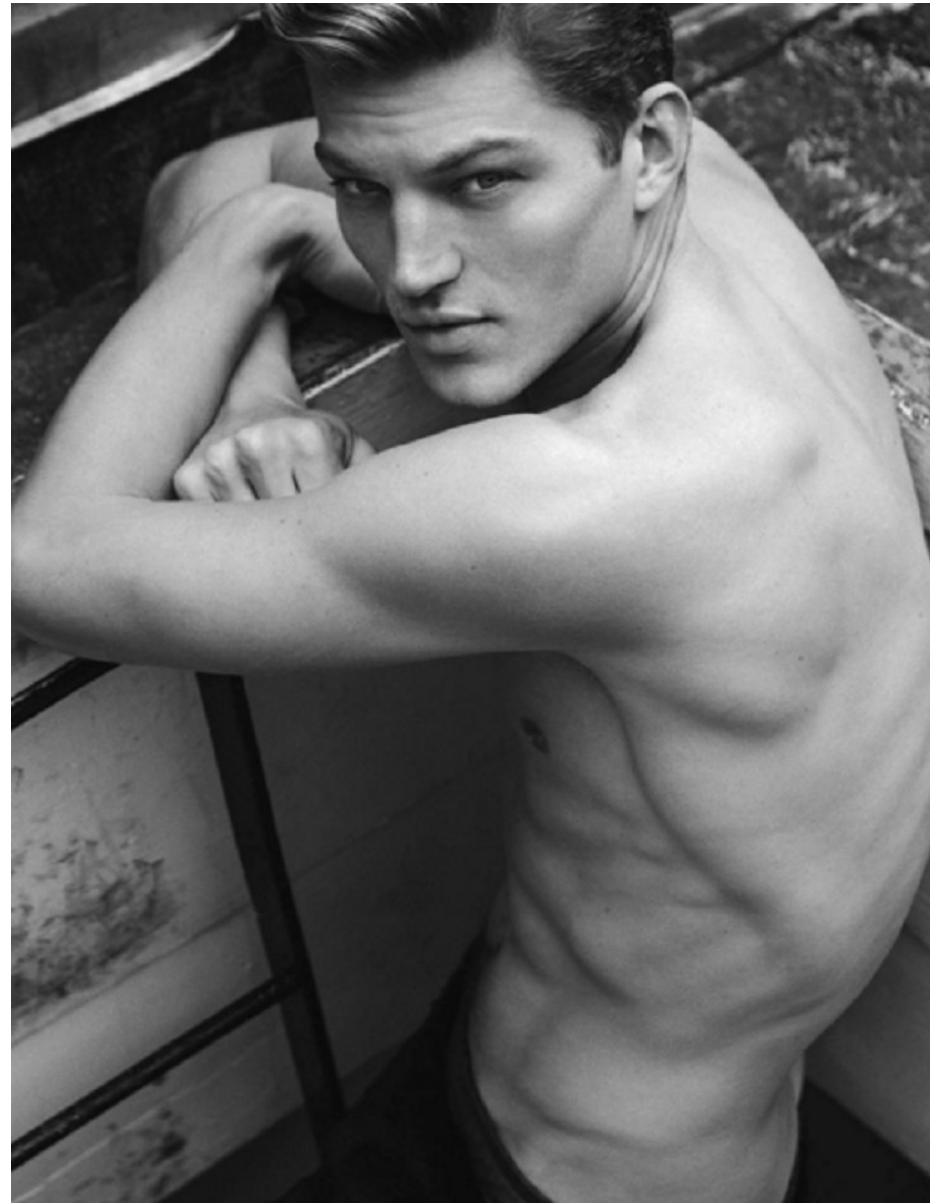


SEBASTIAN SAUVE

Height: 191cm Chest: 102cm Waist: 84cm Suit: 40 L Shoe: 11 UK Hair: Light Brown Eyes: Blue

BOSS MODELS

CAPE TOWN



SEBASTIAN SAUVE

Height: 191cm Chest: 102cm Waist: 84cm Suit: 40 L Shoe: 11 UK Hair: Light Brown Eyes: Blue

BOSS MODELS

CAPE TOWN



SEBASTIAN SAUVE

Height: 191cm Chest: 102cm Waist: 84cm Suit: 40 L Shoe: 11 UK Hair: Light Brown Eyes: Blue

BOSS MODELS

CAPE TOWN



SEBASTIAN SAUVE

Height: 191cm Chest: 102cm Waist: 84cm Suit: 40 L Shoe: 11 UK Hair: Light Brown Eyes: Blue