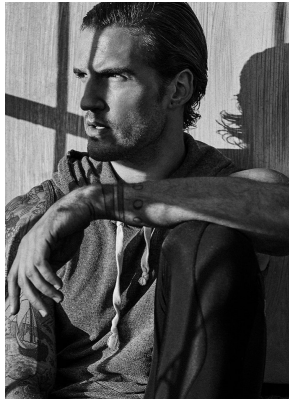


# BOSS MODELS

CAPE TOWN



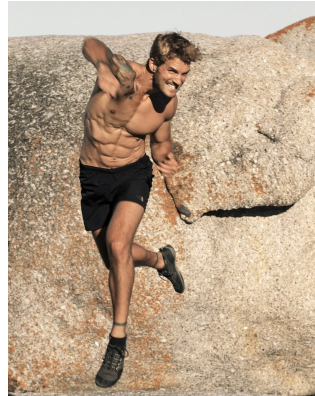
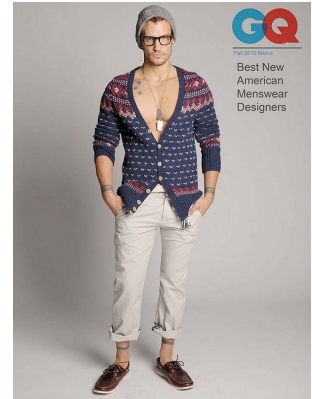
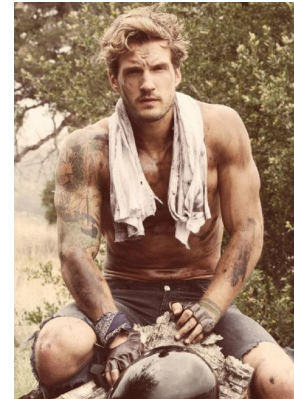
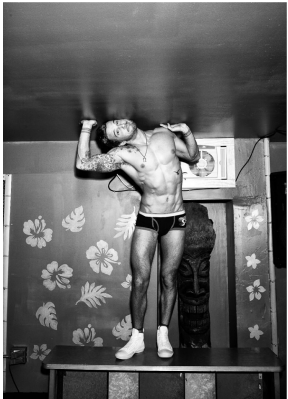
## PARKER HURLEY

Height: 183cm Chest: 102cm Waist: 81cm Suit: 40 R Shoe: 10.5 UK Hair: Dark Blonde Eyes: Hazel



# BOSS MODELS

CAPE TOWN



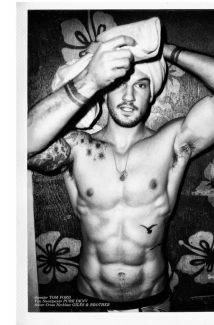
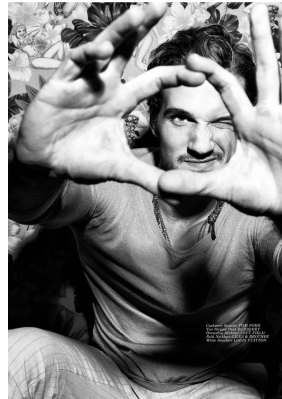
## PARKER HURLEY

Height: 183cm Chest: 102cm Waist: 81cm Suit: 40 R Shoe: 10.5 UK Hair: Dark Blonde Eyes: Hazel

# BOSS MODELS

CAPE TOWN

MEN



PHOTOGRAPHY: KRISTINA WILSON  
STYLING: LINDA HOPKINS  
GROOMING: CLAYTON BROWN  
LOCATION: BOSS STORE CAPE TOWN  
BOSS.COM



## PARKER HURLEY

Height: 183cm Chest: 102cm Waist: 81cm Suit: 40 R Shoe: 10.5 UK Hair: Dark Blonde Eyes: Hazel