

# BOSS MODELS

CAPE TOWN



AXEL TUCKER

Height: 183cm Chest: 102cm Waist: 75cm Suit: 40 R Shoe: 7 UK Hair: Brown Eyes: Green

# BOSS MODELS

CAPE TOWN



AXEL TUCKER

Height: 183cm Chest: 102cm Waist: 75cm Suit: 40 R Shoe: 7 UK Hair: Brown Eyes: Green

# BOSS MODELS

CAPE TOWN



## Stay On Track

WFH comfort shouldn't be limited to the confines of your home. A pair of elevated track pants and the right jacket will give you mileage indoors and out.

**Hooded Everest Gilet**  
R2 499, [superdry.co.za](https://www.superdry.co.za)  
**Cultfish Globe Logo Crew Neck** R1 750, **We Are Egg Stadium Fleece Jogger** R899, [adidas.co.za](https://www.adidas.co.za)  
**Forum Low Shoes**  
R1 899, [adidas.co.za](https://www.adidas.co.za)

## AXEL TUCKER

Height: 183cm Chest: 102cm Waist: 75cm Suit: 40 R Shoe: 7 UK Hair: Brown Eyes: Green

# BOSS MODELS

CAPE TOWN

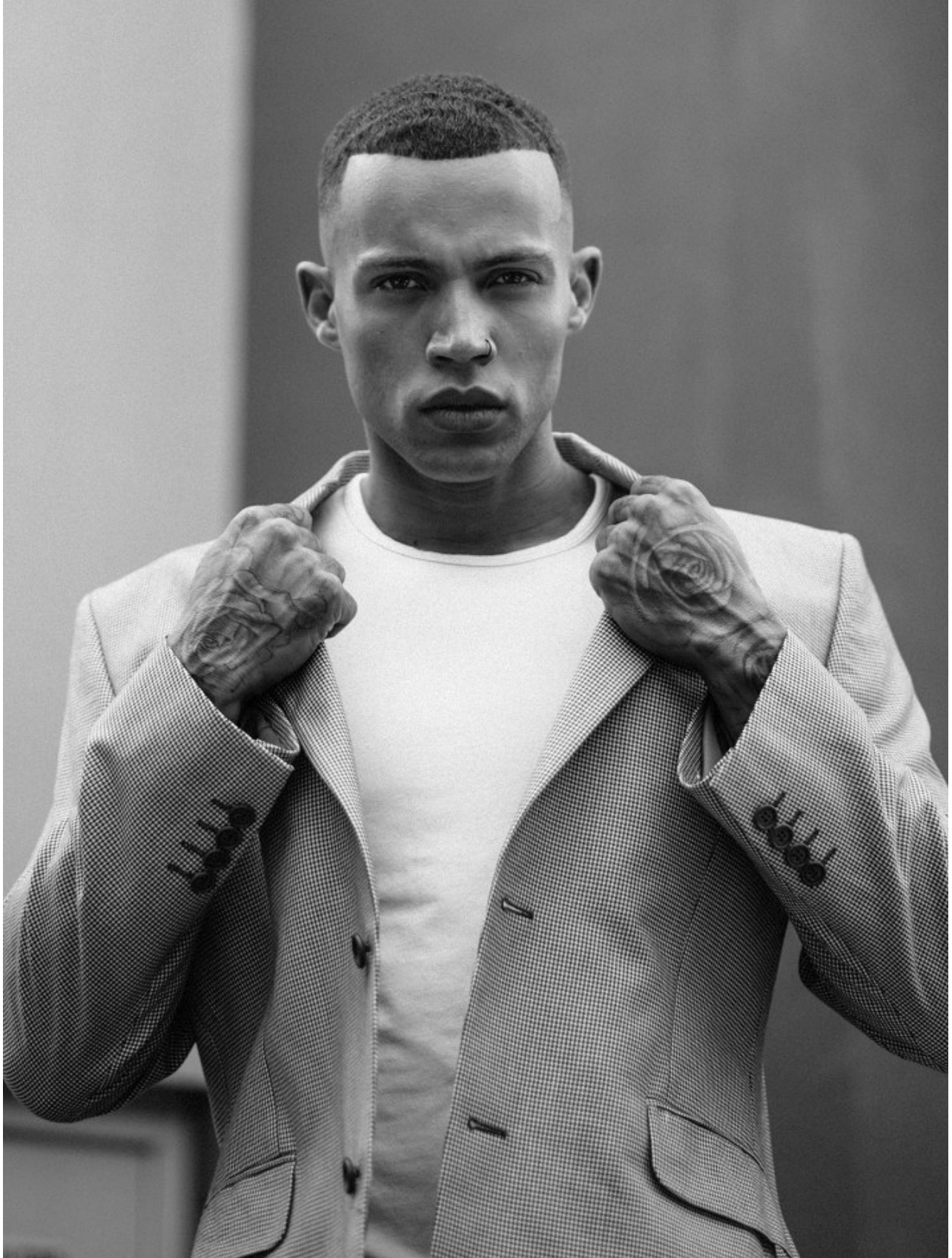


AXEL TUCKER

Height: 183cm Chest: 102cm Waist: 75cm Suit: 40 R Shoe: 7 UK Hair: Brown Eyes: Green

# BOSS MODELS

CAPE TOWN

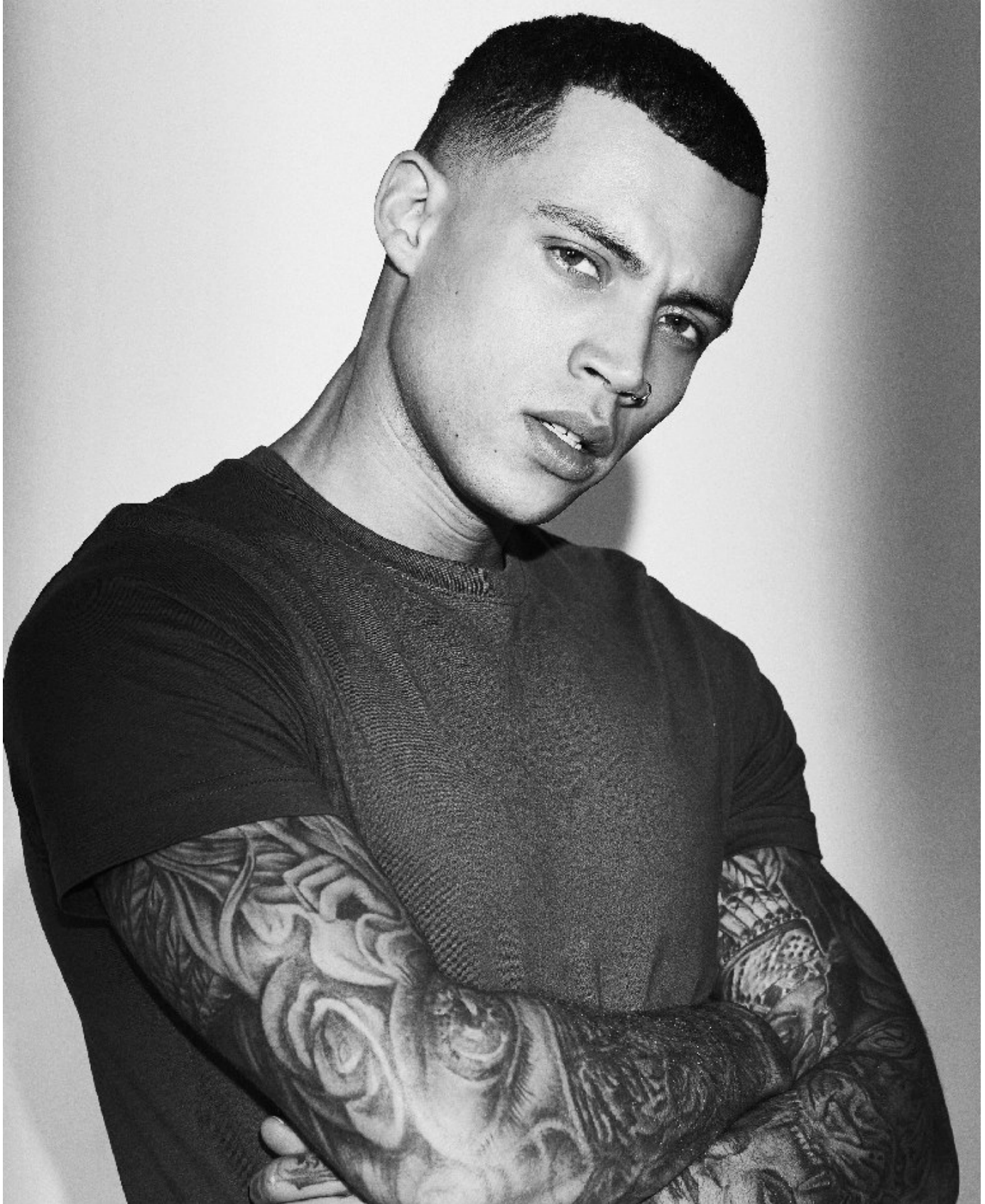


AXEL TUCKER

Height: 183cm Chest: 102cm Waist: 75cm Suit: 40 R Shoe: 7 UK Hair: Brown Eyes: Green

# BOSS MODELS

CAPE TOWN



AXEL TUCKER

Height: 183cm Chest: 102cm Waist: 75cm Suit: 40 R Shoe: 7 UK Hair: Brown Eyes: Green

# BOSS MODELS

CAPE TOWN



## Earth Date

Looking to impress on a first date? Why not continue your nature-loving narrative by dressing the part. Thanks to these brands, this head-to-toe sustainable look will not only show off your style game but also your caring nature.

Coach Jacket R2 199, [adidas.co.za](http://adidas.co.za)  
Oversized T-shirt R1 099, [adidas.co.za](http://adidas.co.za)  
Koi Koi Scarf R250, [WeAreEgg.com](http://WeAreEgg.com)  
Worker Chino Relaxed Denim R2 199, [g-star.com](http://g-star.com)  
Vegan Retro Track Runner R1 799, [superdry.co.za](http://superdry.co.za)  
Base Camp Voyager Duffel R2 899, [thenorthface.com](http://thenorthface.com)



## Double Duty

Double denim has outgrown its boy-band roots to offer up a reliable look that melds well with almost any T. These environmentally friendly brands are putting the focus on creating items that are easy on the eyes and the planet.

Cool Wear Bucket Hat R299, [WeAreEgg.com](http://WeAreEgg.com)  
Fuata Moyo Art Denim Jacket R1 699, [WeAreEgg.com](http://WeAreEgg.com)  
Fuata Moyo Africa Is The Future Belt R399, [WeAreEgg.com](http://WeAreEgg.com)  
Nava Tech Polo R899, [Nautica.atthedrop.co.za](http://Nautica.atthedrop.co.za)  
Join Life Skinny Jeans R699, [Zara.co.za](http://Zara.co.za)



Living sustainably can feel like you're carrying the weight of the world on your shoulders. But with a little help from these environmentally friendly fashion brands, at least you'll shoulder this burden in style. As you strive for change, here's how you can change up your look.

FASHION DIRECTOR AZEEZ JACOBS • PHOTOGRAPHY BYRON KEULEMANS  
FASHION EDITOR WAGHEEBA JANUARY

## AXEL TUCKER

Height: 183cm Chest: 102cm Waist: 75cm Suit: 40 R Shoe: 7 UK Hair: Brown Eyes: Green

# BOSS MODELS

CAPE TOWN

## Earthy Shades

Going green—literally—is a strong choice this season. Layer different shades of these earthy tones to give your outfit depth.

**Sol Sol Camo Jacket**  
R1 000, **We Are Egg**  
**Studio Lounge Fleece Hoodie** R1 499, [adidas.co.za](http://adidas.co.za)  
**Arc Boyfriend Jeans**  
R2 299, [g-star.com](http://g-star.com)  
**Forum Mid Parley Shoes**  
R2 499, [adidas.co.za](http://adidas.co.za)

### Take a Step Ahead

Going green is a choice that starts from the ground up AKA while you're thinking about your carbon footprint, make sure you're leaving the right kind of footprints, too. On a mission to ramp up the sustainability of their apparel, adidas has collaborated with Parley for the Oceans to create a heel strap and tongue webbing made with yarn spun from recycled plastic gathered from the beach. This new approach hasn't put a dent in this iconic shoe's looks; it's still the same as when it first stepped out on the hardwood back in the 1970s.



JUL/AUG 2022 **73** MH.CO.ZA

## AXEL TUCKER

Height: 183cm Chest: 102cm Waist: 75cm Suit: 40 R Shoe: 7 UK Hair: Brown Eyes: Green



# BOSS MODELS

CAPE TOWN



AXEL TUCKER

Height: 183cm Chest: 102cm Waist: 75cm Suit: 40 R Shoe: 7 UK Hair: Brown Eyes: Green

# BOSS MODELS

CAPE TOWN



AXEL TUCKER

Height: 183cm Chest: 102cm Waist: 75cm Suit: 40 R Shoe: 7 UK Hair: Brown Eyes: Green

# BOSS MODELS

CAPE TOWN



AXEL TUCKER

Height: 183cm Chest: 102cm Waist: 75cm Suit: 40 R Shoe: 7 UK Hair: Brown Eyes: Green

# BOSS MODELS

CAPE TOWN



AXEL TUCKER

Height: 183cm Chest: 102cm Waist: 75cm Suit: 40 R Shoe: 7 UK Hair: Brown Eyes: Green

# BOSS MODELS

CAPE TOWN



AXEL TUCKER

Height: 183cm Chest: 102cm Waist: 75cm Suit: 40 R Shoe: 7 UK Hair: Brown Eyes: Green

# BOSS MODELS

CAPE TOWN



**AXEL TUCKER**

Height: 183cm Chest: 102cm Waist: 75cm Suit: 40 R Shoe: 7 UK Hair: Brown Eyes: Green

# BOSS MODELS

CAPE TOWN



AXEL TUCKER

Height: 183cm Chest: 102cm Waist: 75cm Suit: 40 R Shoe: 7 UK Hair: Brown Eyes: Green

# BOSS MODELS

CAPE TOWN



**AXEL TUCKER**

Height: 183cm Chest: 102cm Waist: 75cm Suit: 40 R Shoe: 7 UK Hair: Brown Eyes: Green



# BOSS MODELS

CAPE TOWN



AXEL TUCKER

Height: 183cm Chest: 102cm Waist: 75cm Suit: 40 R Shoe: 7 UK Hair: Brown Eyes: Green

# BOSS MODELS

CAPE TOWN

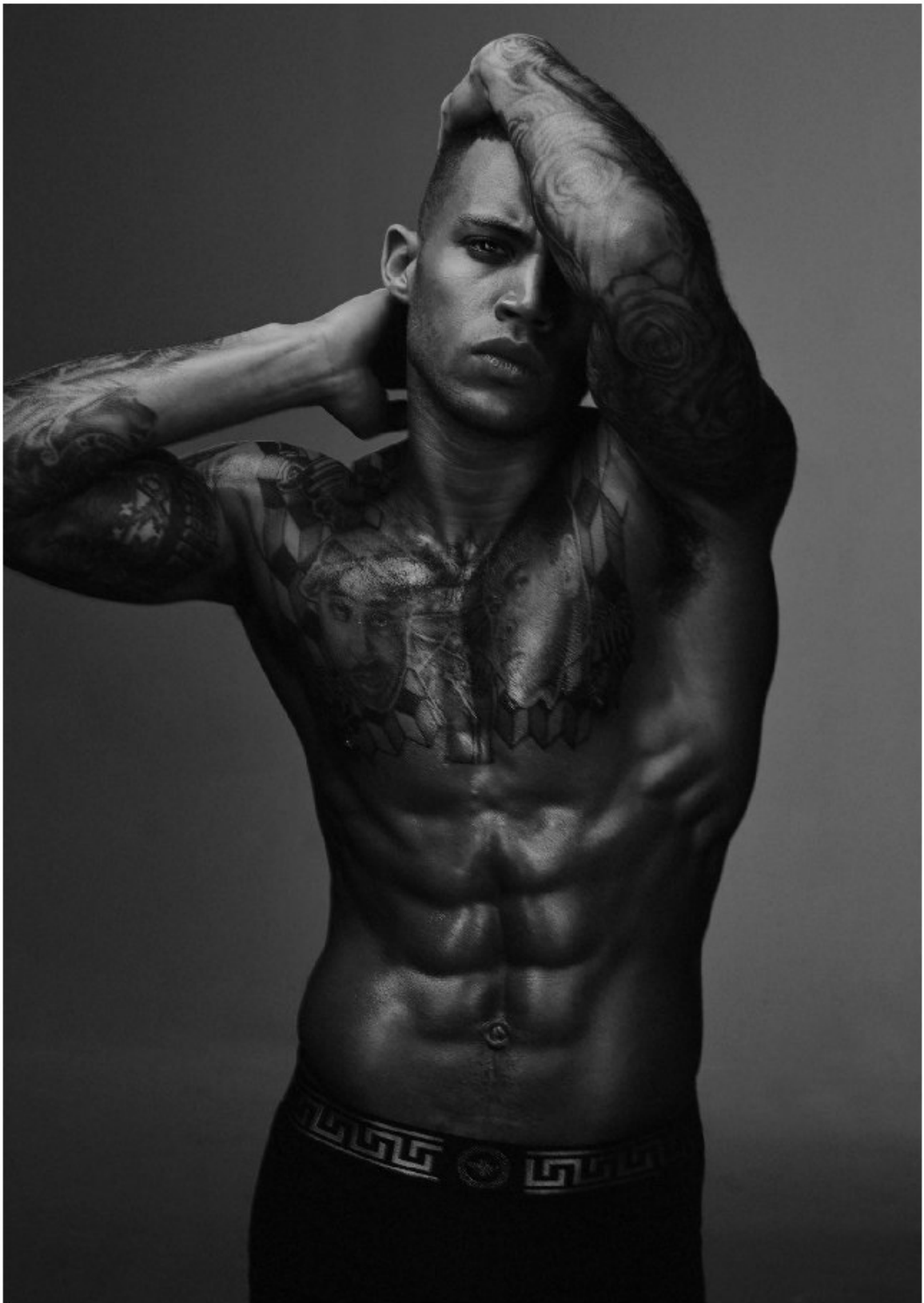


**AXEL TUCKER**

Height: 183cm Chest: 102cm Waist: 75cm Suit: 40 R Shoe: 7 UK Hair: Brown Eyes: Green

# BOSS MODELS

CAPE TOWN



AXEL TUCKER

Height: 183cm Chest: 102cm Waist: 75cm Suit: 40 R Shoe: 7 UK Hair: Brown Eyes: Green

# BOSS MODELS

CAPE TOWN



## AXEL TUCKER

Height: 183cm Chest: 102cm Waist: 75cm Suit: 40 R Shoe: 7 UK Hair: Brown Eyes: Green

# BOSS MODELS

CAPE TOWN



AXEL TUCKER

Height: 183cm Chest: 102cm Waist: 75cm Suit: 40 R Shoe: 7 UK Hair: Brown Eyes: Green

# BOSS MODELS

CAPE TOWN



AXEL TUCKER

Height: 183cm Chest: 102cm Waist: 75cm Suit: 40 R Shoe: 7 UK Hair: Brown Eyes: Green

# BOSS MODELS

CAPE TOWN



**AXEL TUCKER**

Height: 183cm Chest: 102cm Waist: 75cm Suit: 40 R Shoe: 7 UK Hair: Brown Eyes: Green

# BOSS MODELS

CAPE TOWN



AXEL TUCKER

Height: 183cm Chest: 102cm Waist: 75cm Suit: 40 R Shoe: 7 UK Hair: Brown Eyes: Green