

# BOSS MODELS

CAPE TOWN

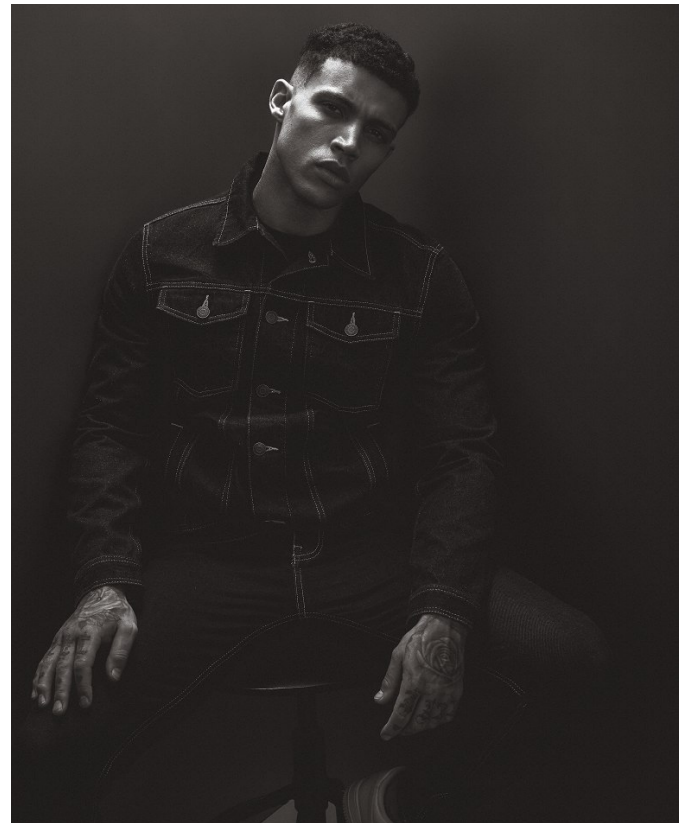


AXEL TUCKER

Height: 183cm Chest: 102cm Waist: 75cm Suit: 40 R Shoe: 7 UK Hair: Brown Eyes: Green

# BOSS MODELS

CAPE TOWN



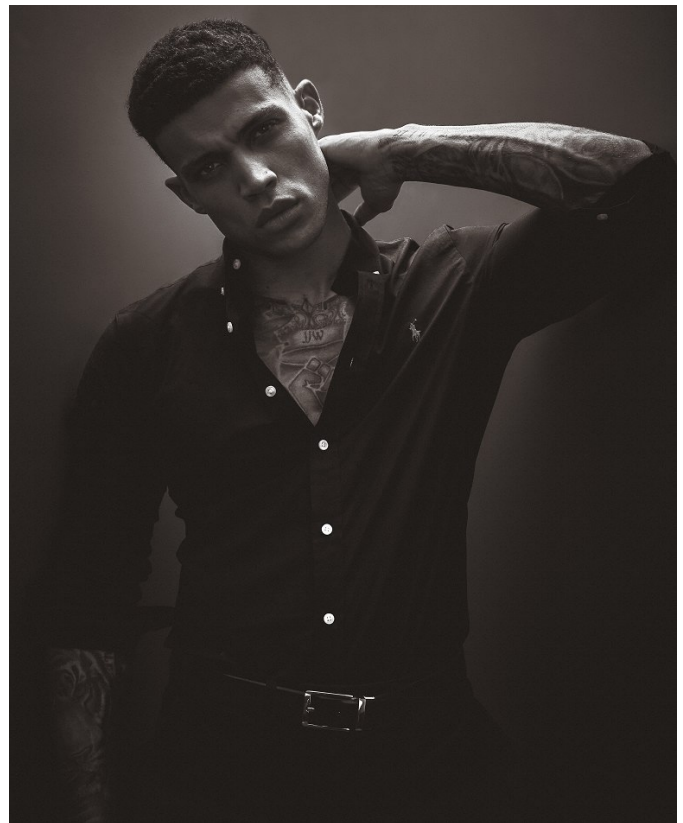
AXEL TUCKER

Height: 183cm Chest: 102cm Waist: 75cm Suit: 40 R Shoe: 7 UK Hair: Brown Eyes: Green



# BOSS MODELS

CAPE TOWN

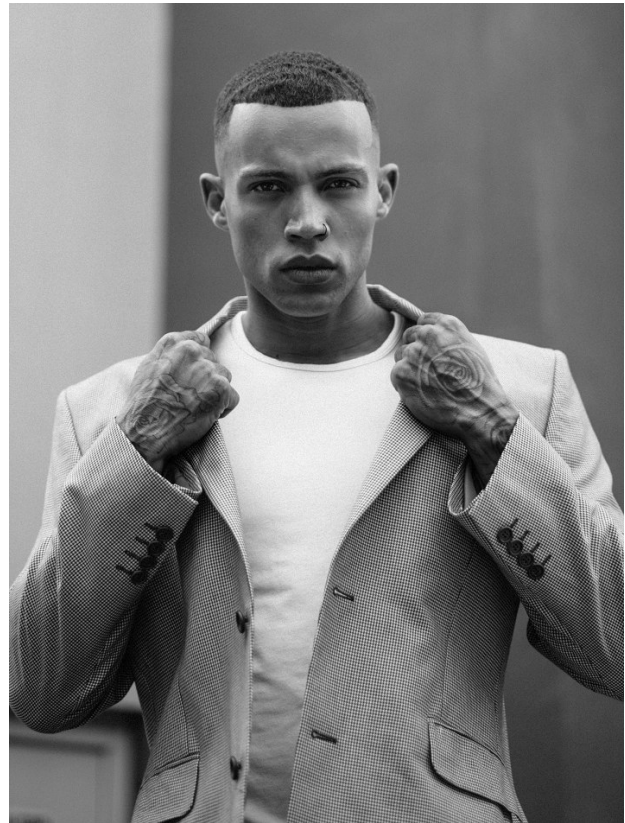


## AXEL TUCKER

Height: 183cm Chest: 102cm Waist: 75cm Suit: 40 R Shoe: 7 UK Hair: Brown Eyes: Green

# BOSS MODELS

CAPE TOWN



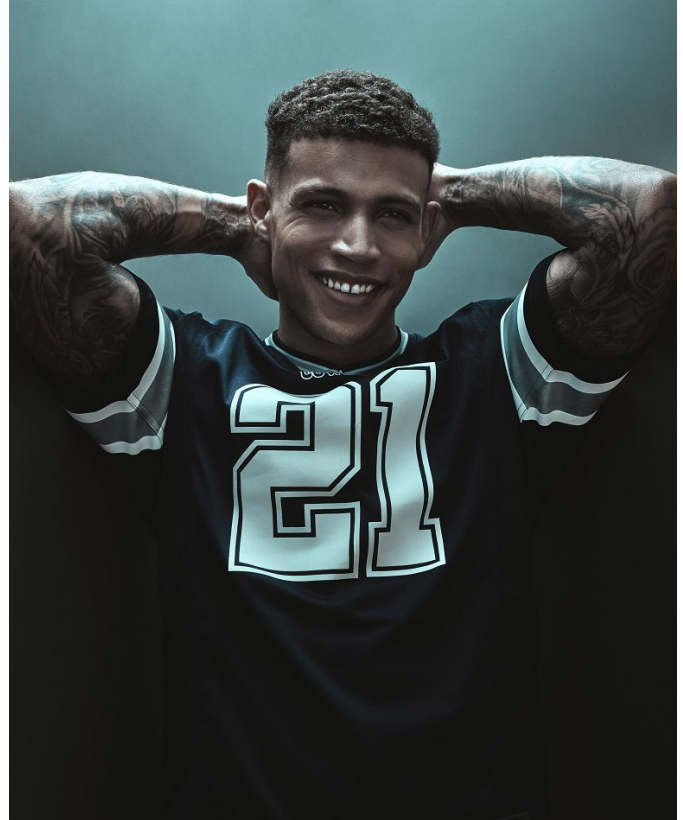
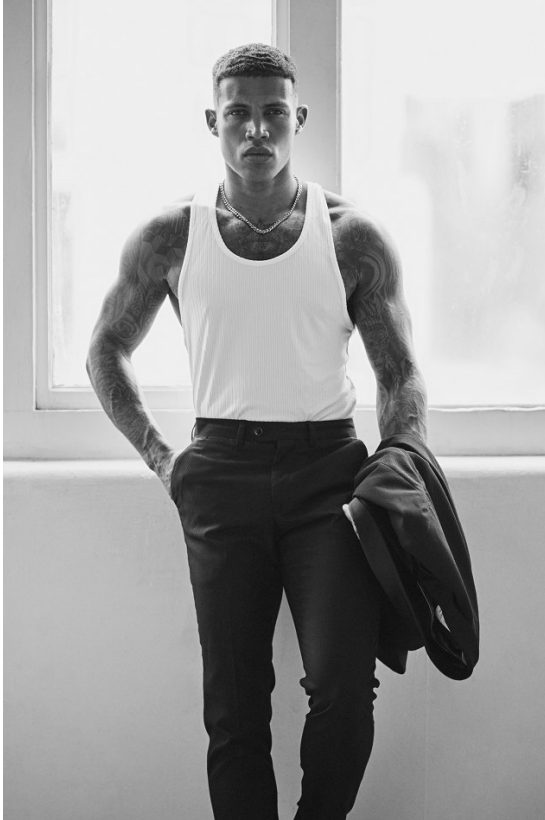
AXEL TUCKER

Height: 183cm Chest: 102cm Waist: 75cm Suit: 40 R Shoe: 7 UK Hair: Brown Eyes: Green



# BOSS MODELS

CAPE TOWN



AXEL TUCKER

Height: 183cm Chest: 102cm Waist: 75cm Suit: 40 R Shoe: 7 UK Hair: Brown Eyes: Green

# BOSS MODELS

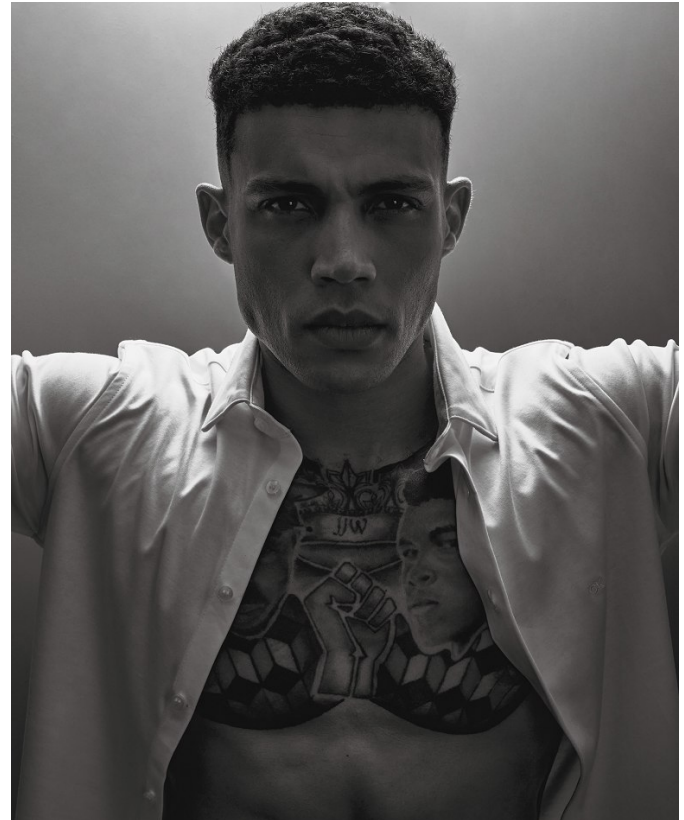
CAPE TOWN



## Stay On Track

WFH comfort shouldn't be limited to the confines of your home. A pair of elevated track pants and the right jacket will give you mileage indoors and out.

Hooded Everest Gilet R2 499, [superdry.co.za](http://superdry.co.za)  
Cuttish Globe Logo Crew Neck R1 750, [WeAreEgg.com](http://WeAreEgg.com)  
Stadium Fences Jogger R399, [adidas.co.za](http://adidas.co.za)  
Forum Low Shoes R1 699, [adidas.co.za](http://adidas.co.za)



## AXEL TUCKER

Height: 183cm Chest: 102cm Waist: 75cm Suit: 40 R Shoe: 7 UK Hair: Brown Eyes: Green



# BOSS MODELS

CAPE TOWN



## Earth Date

Looking to impress on a first date? Why not continue your nature-loving narrative by dressing the part. Thanks to these brands, this head-to-toe sustainable look will not only show off your style game but also your caring nature.

**Couch Jacket** R2 199, [adidas.co.za](http://adidas.co.za)  
**Oversized T-shirt** R1 099, [adidas.co.za](http://adidas.co.za)  
**Koi Kot Scarf** R250, [WeAreEgg.com](http://WeAreEgg.com)  
**Worker Chino Relaxed Denim** R2 199, [q-sta.com](http://q-sta.com)  
**Vegan Retro Track Runner** R1 799, [superdry.co.za](http://superdry.co.za)  
**Base Camp Nylon Duffel** R2 899, [thenorthface.com](http://thenorthface.com)



## Double Duty

Double denim has outgrown its boy-band roots to offer up a reliable look that reads well with almost any T. These environmentally friendly brands are putting the focus on creating items that are easy on the eyes and the planet.

**Cool Wear Bucket Hat** R209, [WeAreEgg.com](http://WeAreEgg.com)  
**Fuata Moyo Art Denim Jacket** R1 799, [WeAreEgg.com](http://WeAreEgg.com)  
**Fuata Moyo Africa Is The Future Belt** R269, [WeAreEgg.com](http://WeAreEgg.com)  
**New Tech Polo** R599, [Neuteca.at.thedrop.co.za](http://Neuteca.at.thedrop.co.za)  
**Joan Life Skinny Jeans** R699, [Zara.co.za](http://Zara.co.za)



Living sustainably can feel like you're carrying the weight of the world on your shoulders. But with a little help from these environmentally friendly fashion brands, at least you'll shoulder this burden in style. As you strive for change, here's how you can change your look.

FASHION DIRECTOR: AZITEZ JACOBS | PHOTOGRAPHER: BERON KELLEMAN  
 FASHION EDITOR: WAGHELEBA JANUARY

## Earthy Shades

Going green—literally—is a strong choice this season. Layer different shades of these earthy tones to give your outfit depth.

**Sol Sol Camo Jacket** R1 000, [WeAreEgg.com](http://WeAreEgg.com)  
**Studio Lounge Piece Hoodie** R1 499, [adidas.co.za](http://adidas.co.za)  
**Are Boyfriend Jeans** R2 299, [q-sta.com](http://q-sta.com)  
**Forum Mid Parley Shoes** R2 499, [adidas.co.za](http://adidas.co.za)

### Take a Step Ahead

Going green is a choice that starts from the ground up. AKA while you're thinking about your carbon footprint, make sure you're leaving the right kind of footprints, too. On a mission to ramp up the sustainability of their apparel, adidas has collaborated with Parley for the Oceans to create a heel strap and tongue webbing made with yarn spun from recycled plastic gathered from the beach. This new approach hasn't put a dent in this iconic shoe's looks; it's still the same as when it first stepped out on the hardwood back in the 1970s.



JUL/AUG 2022 73 MHC/OZA

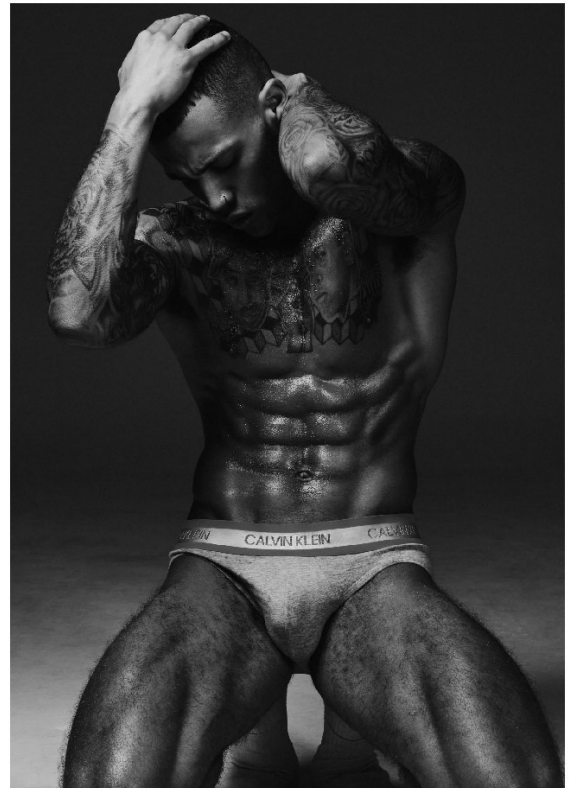


## AXEL TUCKER

Height: 183cm Chest: 102cm Waist: 75cm Suit: 40 R Shoe: 7 UK Hair: Brown Eyes: Green

# BOSS MODELS

CAPE TOWN



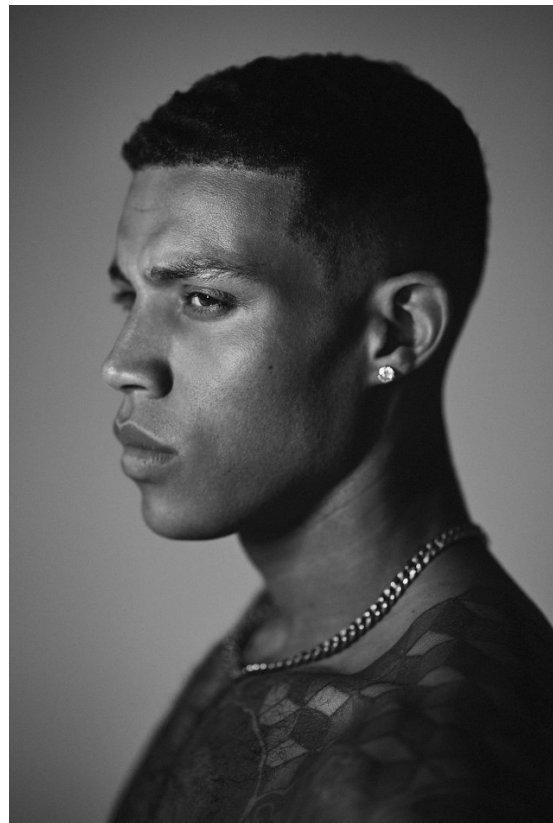
## AXEL TUCKER

Height: 183cm Chest: 102cm Waist: 75cm Suit: 40 R Shoe: 7 UK Hair: Brown Eyes: Green



# BOSS MODELS

CAPE TOWN



AXEL TUCKER

Height: 183cm Chest: 102cm Waist: 75cm Suit: 40 R Shoe: 7 UK Hair: Brown Eyes: Green