

# BOSS MODELS

CAPE TOWN



## NANA KORANKYE

Height: 181cm Chest: 92cm Waist: 73cm Suit: 37 R Shoe: 9.5 UK Hair: Black Eyes: Brown

# BOSS MODELS

CAPE TOWN

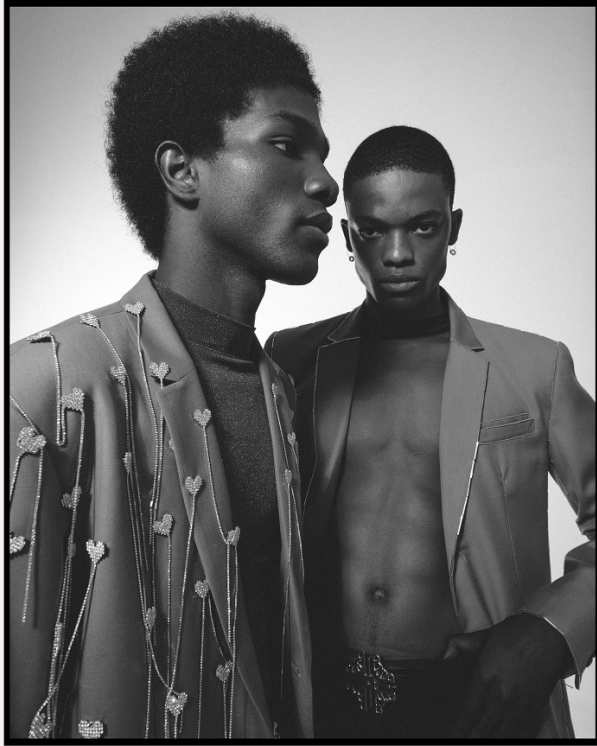


NANA KORANKYE

Height: 181cm Chest: 92cm Waist: 73cm Suit: 37 R Shoe: 9.5 UK Hair: Black Eyes: Brown

# BOSS MODELS

CAPE TOWN

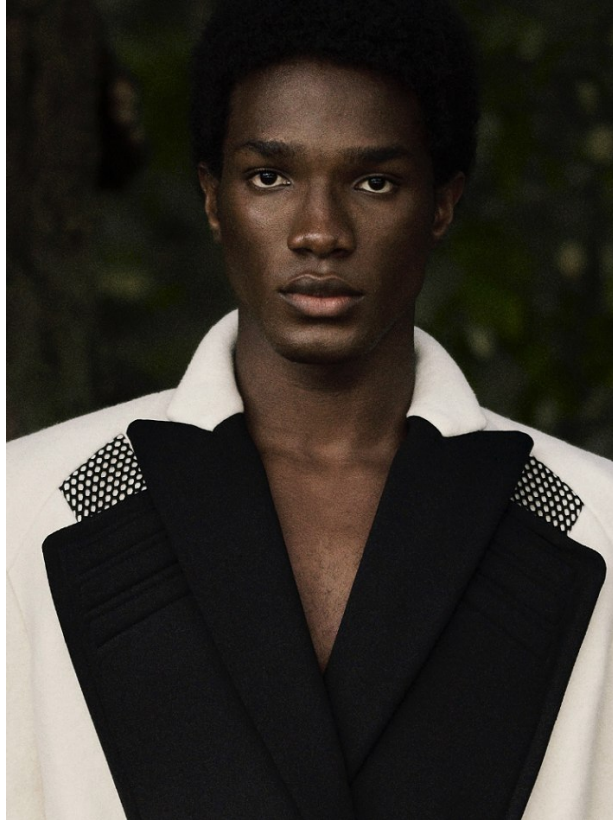


NANA KORANKYE

Height: 181cm Chest: 92cm Waist: 73cm Suit: 37 R Shoe: 9.5 UK Hair: Black Eyes: Brown

# BOSS MODELS

CAPE TOWN

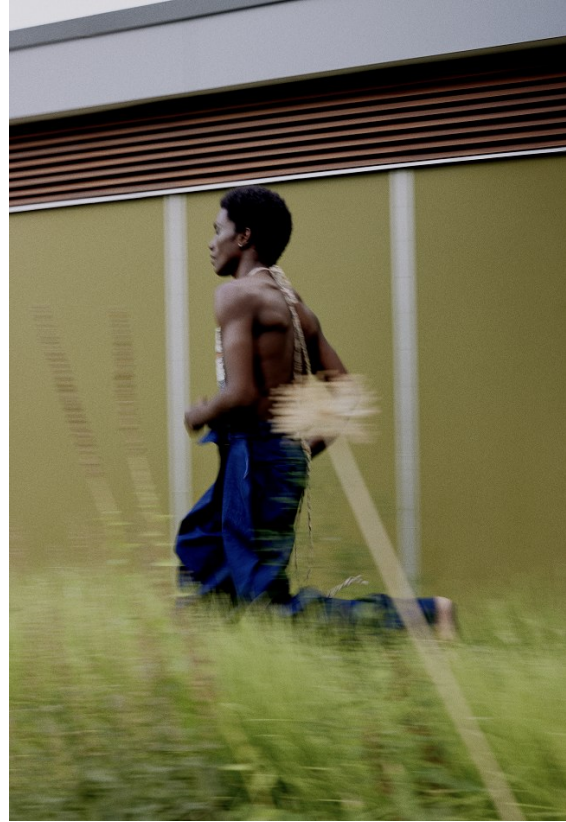
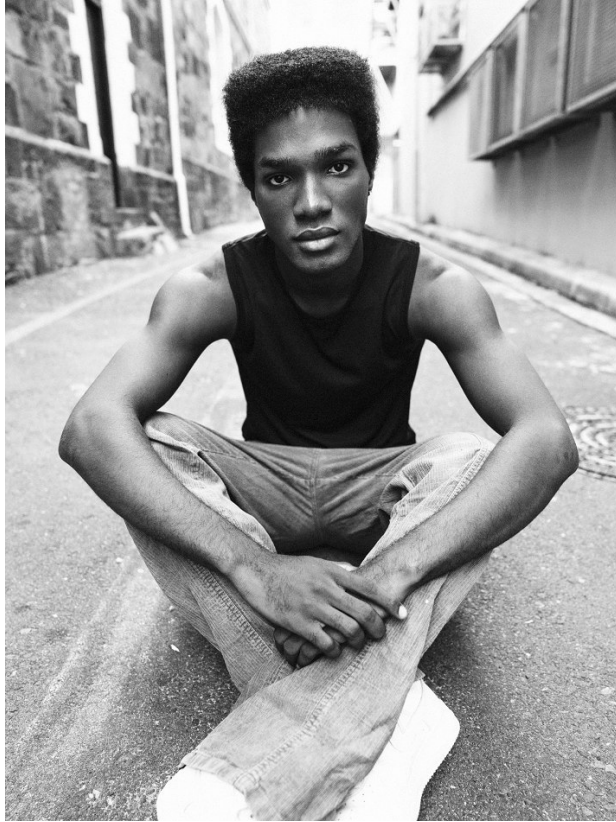


## NANA KORANKYE

Height: 181cm Chest: 92cm Waist: 73cm Suit: 37 R Shoe: 9.5 UK Hair: Black Eyes: Brown

# BOSS MODELS

CAPE TOWN

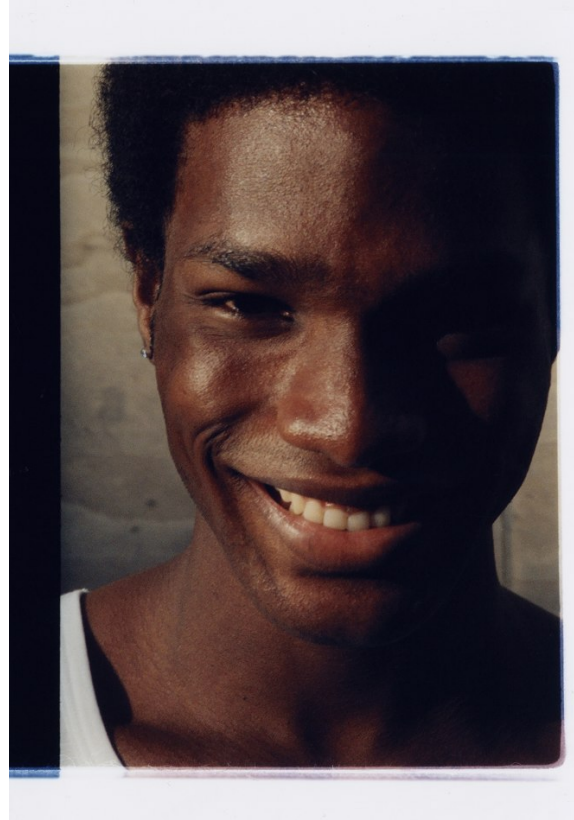


NANA KORANKYE

Height: 181cm Chest: 92cm Waist: 73cm Suit: 37 R Shoe: 9.5 UK Hair: Black Eyes: Brown

# BOSS MODELS

CAPE TOWN



## Be bold with colour

Men often fear pairing too many colours, textures and patterns together, but sometimes 'more is more' isn't a bad thing. Find the perfect balance by making sure to include a neutral colour and by playing around with different combinations.

Jersey R850, Zara;  
shorts R3 699, Diesel;  
coat R2 399, ZARA;  
shoes R399.99, Mr Price

38 JUNE 2023

BONA.CO.ZA



## FASHION

### Go neutral

Shearling jackets are such a classic that have made their way back into the winter fashion season. Brown and black colourways are good investment options as they are neutral and can be worn with anything.

Father  
Jacket R1 200,  
Markham; denim jacket  
R3 699 and pants  
R2 499, both G-Star  
RAW; shoes R349,  
Markham

Son  
Shacket R2 199,  
Mr Price; jacket R1 199,  
ZARA; pants R299  
and shoes R340,  
both Woodworms

# Just like My Daddy

Fashion inspired by generations gone by - now with a modern-day edge

STYLIST Rojann Deyos  
PHOTOGRAPHY Chanelle Naudi

## NANA KORANKYE

Height: 181cm Chest: 92cm Waist: 73cm Suit: 37 R Shoe: 9.5 UK Hair: Black Eyes: Brown

# BOSS MODELS

CAPE TOWN

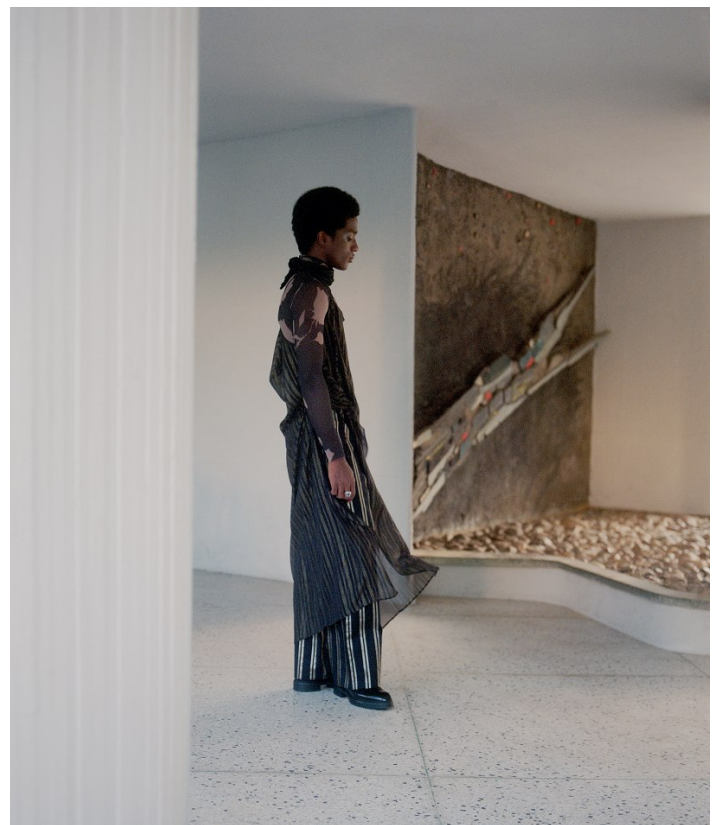


NANA KORANKYE

Height: 181cm Chest: 92cm Waist: 73cm Suit: 37 R Shoe: 9.5 UK Hair: Black Eyes: Brown

# BOSS MODELS

CAPE TOWN



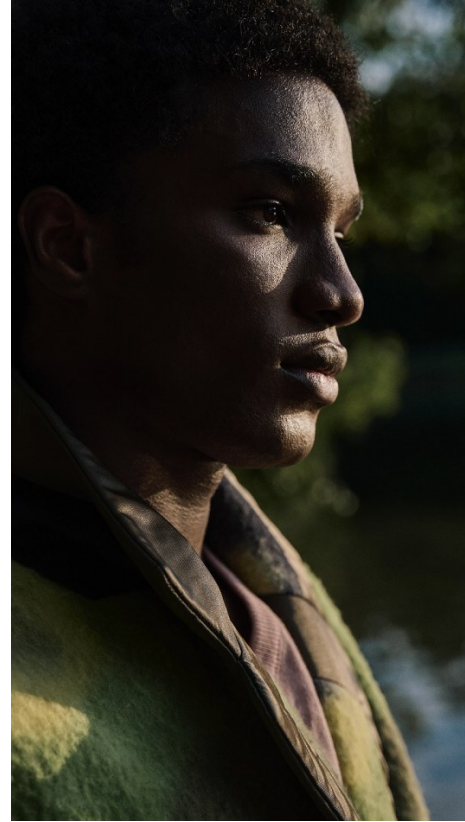
NANA KORANKYE

Height: 181cm Chest: 92cm Waist: 73cm Suit: 37 R Shoe: 9.5 UK Hair: Black Eyes: Brown



# BOSS MODELS

CAPE TOWN



## NANA KORANKYE

Height: 181cm Chest: 92cm Waist: 73cm Suit: 37 R Shoe: 9.5 UK Hair: Black Eyes: Brown