

# BOSS MODELS

CAPE TOWN



**GEORGE HARD**

Height: 187cm Chest: 92cm Waist: 71cm Shoe: 10.5 UK Hair: Auburn Eyes: Green

# BOSS MODELS

CAPE TOWN



GEORGE HARD

Height: 187cm Chest: 92cm Waist: 71cm Shoe: 10.5 UK Hair: Auburn Eyes: Green



# BOSS MODELS

CAPE TOWN



GEORGE HARD

Height: 187cm Chest: 92cm Waist: 71cm Shoe: 10.5 UK Hair: Auburn Eyes: Green

# BOSS MODELS

CAPE TOWN



GEORGE HARD

Height: 187cm Chest: 92cm Waist: 71cm Shoe: 10.5 UK Hair: Auburn Eyes: Green



# BOSS MODELS

CAPE TOWN

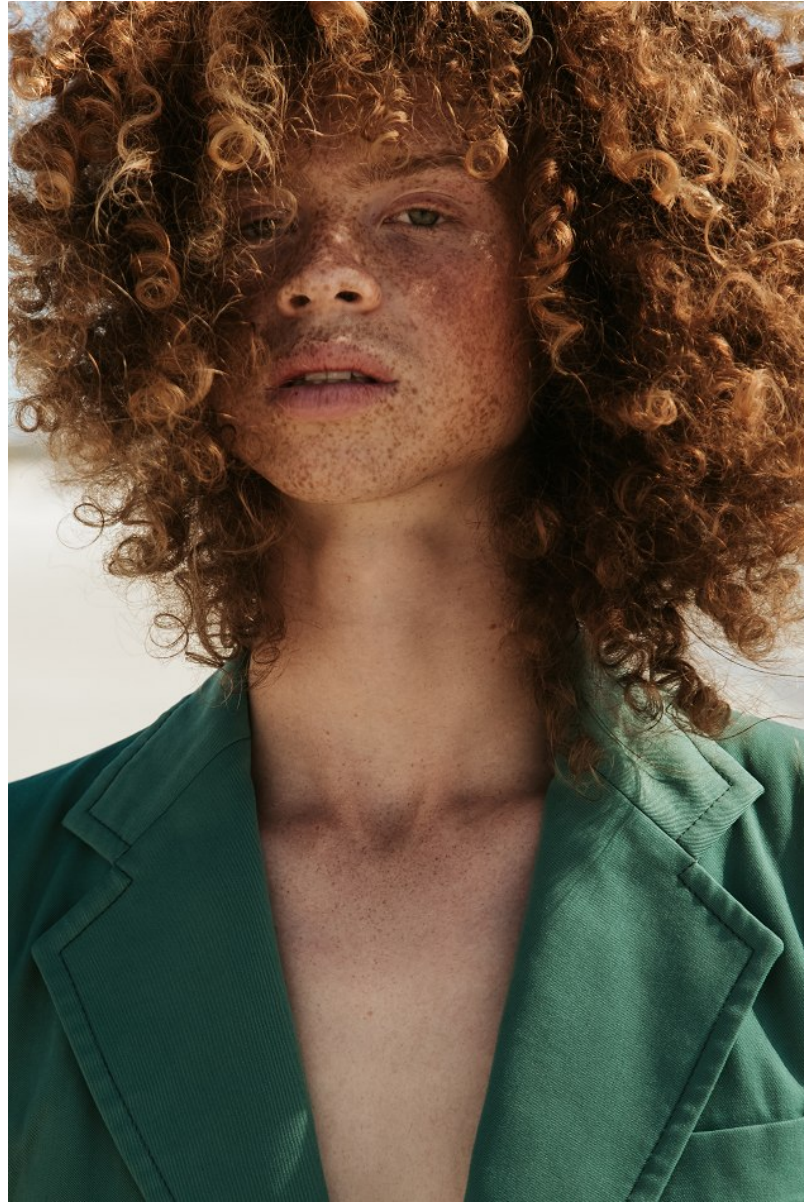


## GEORGE HARD

Height: 187cm Chest: 92cm Waist: 71cm Shoe: 10.5 UK Hair: Auburn Eyes: Green

# BOSS MODELS

CAPE TOWN



GEORGE HARD

Height: 187cm Chest: 92cm Waist: 71cm Shoe: 10.5 UK Hair: Auburn Eyes: Green



# BOSS MODELS

CAPE TOWN



GEORGE HARD

Height: 187cm Chest: 92cm Waist: 71cm Shoe: 10.5 UK Hair: Auburn Eyes: Green



# BOSS MODELS

CAPE TOWN



GEORGE HARD

Height: 187cm Chest: 92cm Waist: 71cm Shoe: 10.5 UK Hair: Auburn Eyes: Green



# BOSS MODELS

CAPE TOWN



## GEORGE HARD

Height: 187cm Chest: 92cm Waist: 71cm Shoe: 10.5 UK Hair: Auburn Eyes: Green

# BOSS MODELS

CAPE TOWN



GEORGE HARD

Height: 187cm Chest: 92cm Waist: 71cm Shoe: 10.5 UK Hair: Auburn Eyes: Green



# BOSS MODELS

CAPE TOWN



**GEORGE HARD**

Height: 187cm Chest: 92cm Waist: 71cm Shoe: 10.5 UK Hair: Auburn Eyes: Green

# BOSS MODELS

CAPE TOWN



GEORGE HARD

Height: 187cm Chest: 92cm Waist: 71cm Shoe: 10.5 UK Hair: Auburn Eyes: Green



# BOSS MODELS

CAPE TOWN



## GEORGE HARD

Height: 187cm Chest: 92cm Waist: 71cm Shoe: 10.5 UK Hair: Auburn Eyes: Green



# BOSS MODELS

CAPE TOWN



# 5

KEYWORD

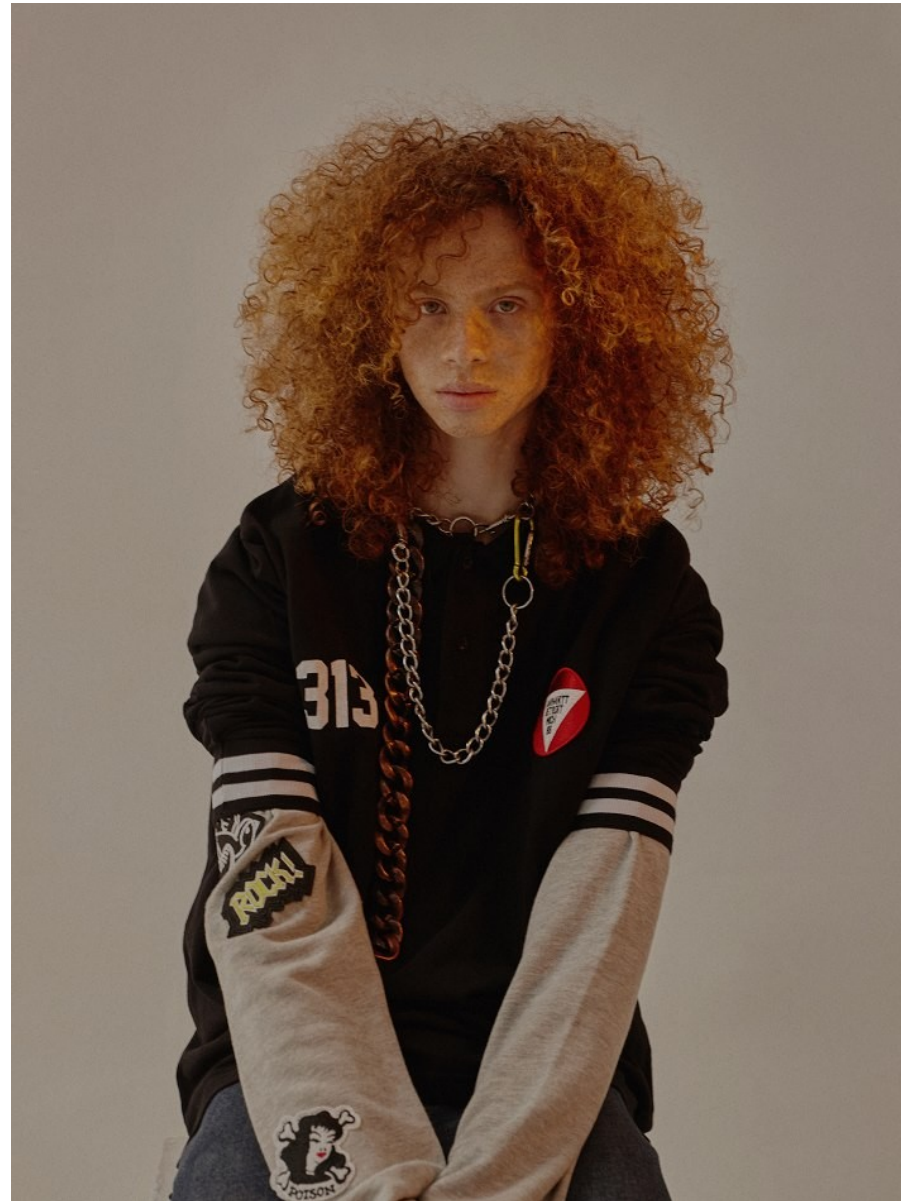
## Westmark

Photo: Yuji Fukuhara / eight peace!  
Styling: Ryota Yamada Hair: Takuya Baba / SEPT  
Model: George, Nicholas, Hugo, Aaron

### ワイド、ベルト、タックインで 作る旬なウエストマーク

ワイドパンツへの支持率が勢いを増し、より太いシルエットに容れを遂げた。袴を彷彿させる股上の深いパンツにタックイン、2重にしたベルト使いなど、着こなしにひねりを加えたスタイルが浸透しつつある。そんな“ウエストマーク”をいち早く極め、自分らしいスタイルを確立したい。

SPR10 052



## GEORGE HARD

Height: 187cm Chest: 92cm Waist: 71cm Shoe: 10.5 UK Hair: Auburn Eyes: Green



# BOSS MODELS

CAPE TOWN

# VARÓN



New Varón Online  
[www.varonmag.com](http://www.varonmag.com)

Follow us on:

Instagram: @varonmagazine  
Facebook: Varón  
Tumblr: [www.varonmag.tumblr.com](http://www.varonmag.tumblr.com)  
Twitter: @varonmag



## GEORGE HARD

Height: 187cm Chest: 92cm Waist: 71cm Shoe: 10.5 UK Hair: Auburn Eyes: Green

# BOSS MODELS

CAPE TOWN



brand  
**NIUKU**  
**ASHLEY ROWE**  
label  
International Gallery BEAMS

20

アフリカ出身のデュオデザイナーによる(ニーク)は、ベージュなアイテムを素材扱いでサイジングで新鮮に見えるピュアでミニマルなコレクション、たっぶりとしたシルエット、ワフに断ち切られたエッジが印象的なデニムアイテムを展開するのは(アシュリー・ロウ)。(インターナショナルギャラリー・ビームス)が目下22ブランドは、どちらもユニセックスなフロンションが特徴だ。

The basic design of NIUKU's clothes is quite simple, but the brand's two African designers make it look fresh by choosing the right material and fit. If you wish to have edgy denim items this winter, ASHLEY ROWE is the brand for you. They are both available at International Gallery BEAMS stores.

**TWO Brands on the Rise**

注目の新興ブランドが提案する  
リフックスタイル

NIUKU Clothing Label Y76,000/Tax  
Label Y2,200/Tax, Price Y76,200/Tax  
PALA SEIWA 075-204-100  
〒220-0001 東京都三軒茶屋4-1-10  
BEAMS Store 03-6300-3142  
11:00-18:00

ASHLEY ROWE Design 03-6300-3142  
MAISON MARTIN MARGIELA  
Children of the disaccordance Price Y74,000/131  
by International Gallery BEAMS  
MINNETONKA Softshell Y12,000/Tax  
BEAMS Store 03-6300-3142  
by BEAMS  
MOTORHATORY + BEAMS PLUS  
Label No. 142 Y11,000/Tax  
03-6300-3142

( BEAMS MEN )

068



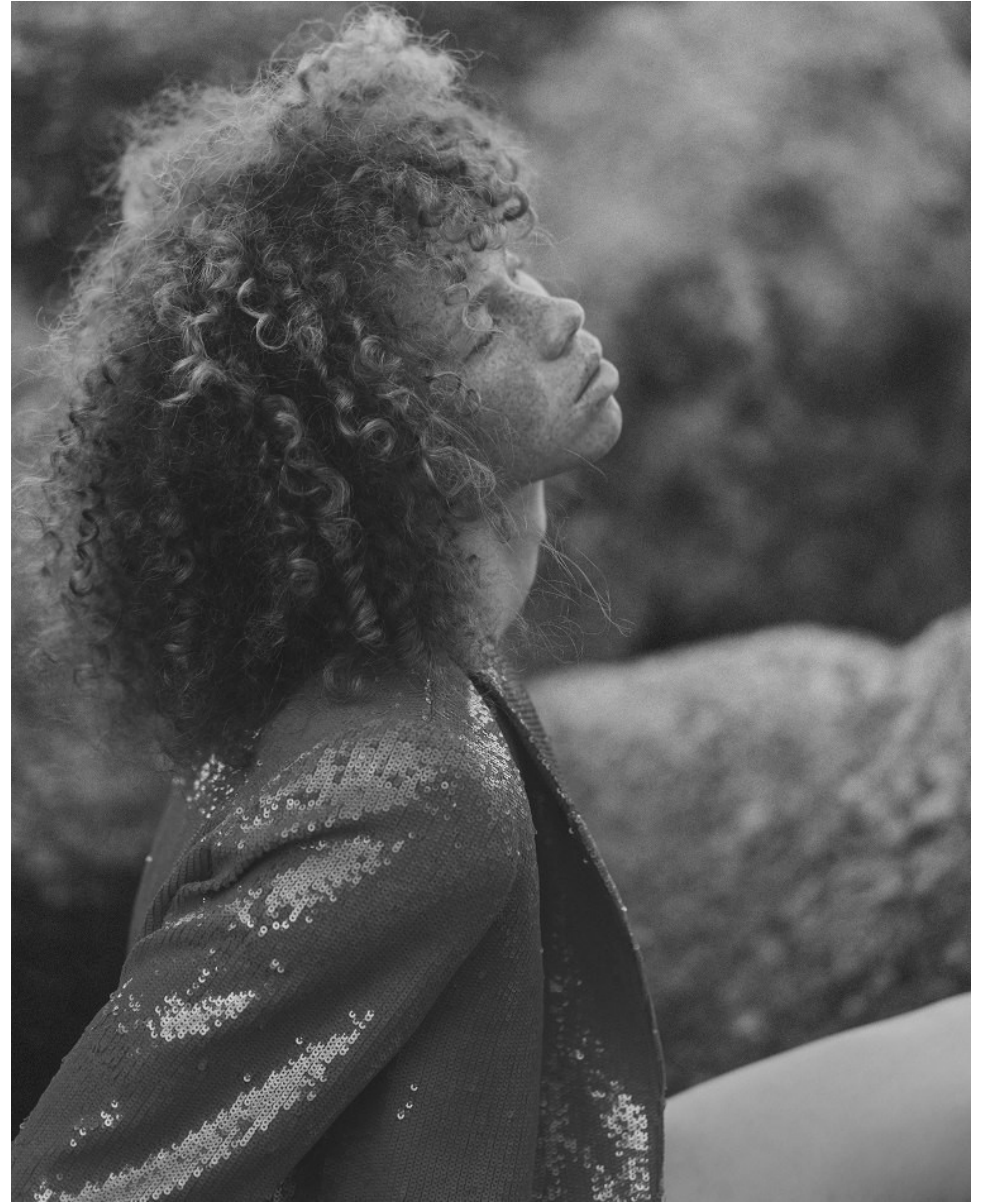
## GEORGE HARD

Height: 187cm Chest: 92cm Waist: 71cm Shoe: 10.5 UK Hair: Auburn Eyes: Green



# BOSS MODELS

CAPE TOWN



GEORGE HARD

Height: 187cm Chest: 92cm Waist: 71cm Shoe: 10.5 UK Hair: Auburn Eyes: Green



# BOSS MODELS

CAPE TOWN



GEORGE HARD

Height: 187cm Chest: 92cm Waist: 71cm Shoe: 10.5 UK Hair: Auburn Eyes: Green



# BOSS MODELS

CAPE TOWN



L'OFFICIEL  
DIGITAL HOMMES



GEORGE HARD

Height: 187cm Chest: 92cm Waist: 71cm Shoe: 10.5 UK Hair: Auburn Eyes: Green

# BOSS MODELS

CAPE TOWN



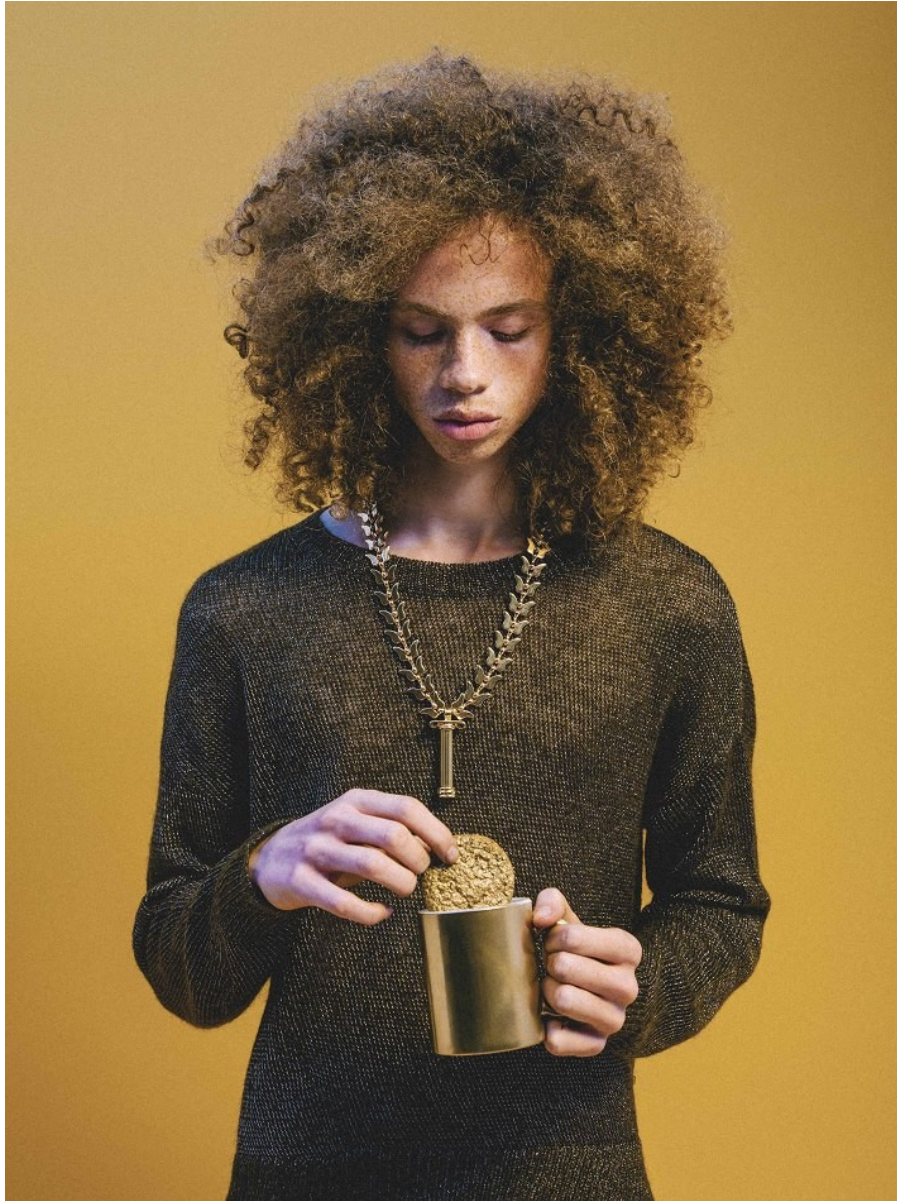
GEORGE HARD

Height: 187cm Chest: 92cm Waist: 71cm Shoe: 10.5 UK Hair: Auburn Eyes: Green



# BOSS MODELS

CAPE TOWN



GEORGE HARD

Height: 187cm Chest: 92cm Waist: 71cm Shoe: 10.5 UK Hair: Auburn Eyes: Green



# BOSS MODELS

CAPE TOWN



## GEORGE HARD

Height: 187cm Chest: 92cm Waist: 71cm Shoe: 10.5 UK Hair: Auburn Eyes: Green



# BOSS MODELS

CAPE TOWN



GEORGE HARD

Height: 187cm Chest: 92cm Waist: 71cm Shoe: 10.5 UK Hair: Auburn Eyes: Green

# BOSS MODELS

CAPE TOWN



**GEORGE HARD**

Height: 187cm Chest: 92cm Waist: 71cm Shoe: 10.5 UK Hair: Auburn Eyes: Green



# BOSS MODELS

CAPE TOWN



**GEORGE HARD**

Height: 187cm Chest: 92cm Waist: 71cm Shoe: 10.5 UK Hair: Auburn Eyes: Green