

# BOSS MODELS

CAPE TOWN



GEORGE HARD

Height: 187cm Chest: 92cm Waist: 71cm Shoe: 10.5 UK Hair: Auburn Eyes: Green

# BOSS MODELS

CAPE TOWN

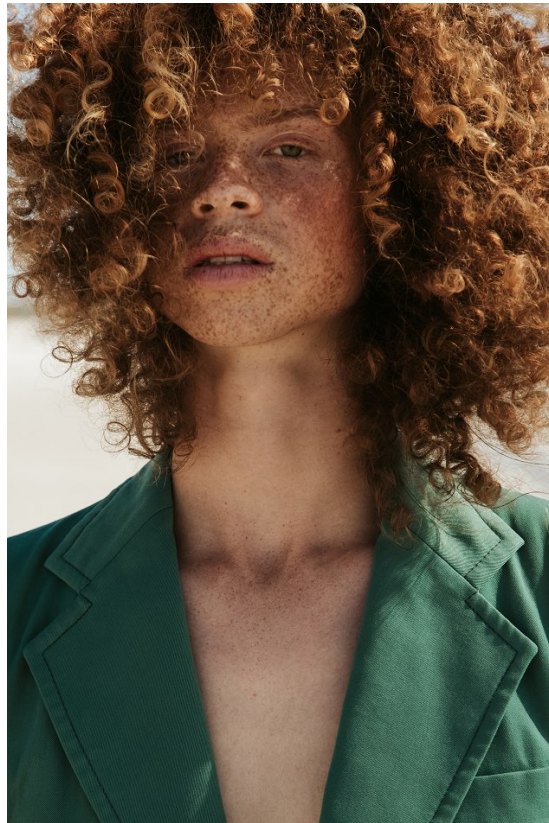


## GEORGE HARD

Height: 187cm Chest: 92cm Waist: 71cm Shoe: 10.5 UK Hair: Auburn Eyes: Green

# BOSS MODELS

CAPE TOWN



**GEORGE HARD**

Height: 187cm Chest: 92cm Waist: 71cm Shoe: 10.5 UK Hair: Auburn Eyes: Green

# BOSS MODELS

CAPE TOWN



GEORGE HARD

Height: 187cm Chest: 92cm Waist: 71cm Shoe: 10.5 UK Hair: Auburn Eyes: Green

# BOSS MODELS

CAPE TOWN

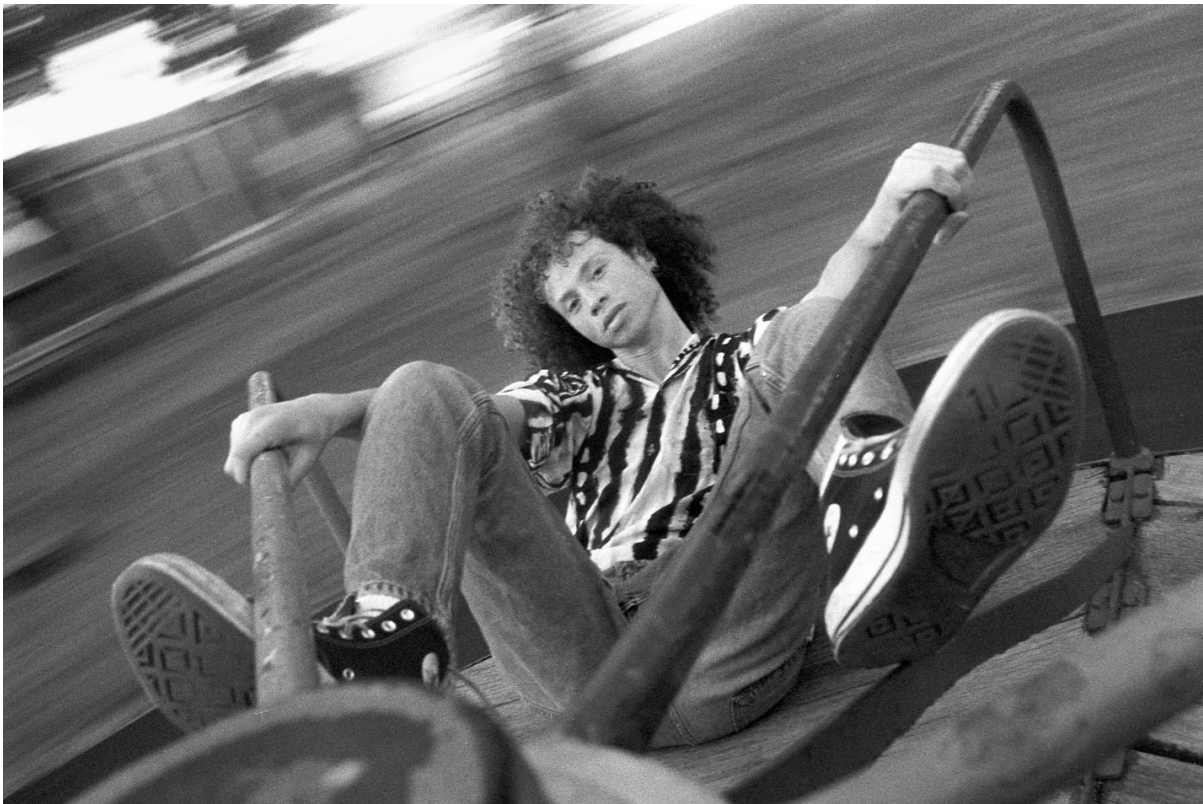


GEORGE HARD

Height: 187cm Chest: 92cm Waist: 71cm Shoe: 10.5 UK Hair: Auburn Eyes: Green

# BOSS MODELS

CAPE TOWN

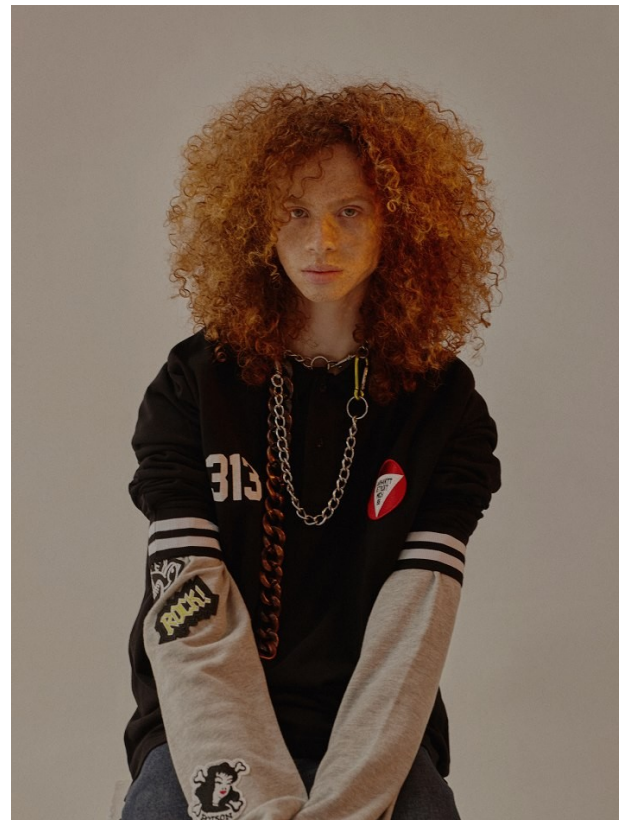


GEORGE HARD

Height: 187cm Chest: 92cm Waist: 71cm Shoe: 10.5 UK Hair: Auburn Eyes: Green

# BOSS MODELS

CAPE TOWN



## GEORGE HARD

Height: 187cm Chest: 92cm Waist: 71cm Shoe: 10.5 UK Hair: Auburn Eyes: Green

# BOSS MODELS

CAPE TOWN

## VARÓN



New Varón Online  
[www.varonmag.com](http://www.varonmag.com)

Follow us on:  
Instagram: @varonmagazine  
Facebook: Varón  
Tumblr: [www.varonmag.tumblr.com](http://www.varonmag.tumblr.com)  
Twitter: @varonmag



Model:  
**NIJUKU**  
**ASHLEY ROWE**  
Label:  
International Gallery BEAMS

20

アラスカ産のチヌダグアイローニと  
タコがはりのチヌダグアイローニも  
素材違いやインジゴで染めた異なる  
色でアラスカ産チヌダグアイローニを  
取り入れたシボ、ラッパにちりぢり  
したエッジの付いたデニム、アラスカ  
産チヌダグアイローニのチヌダグアイ  
ンターフェイス(チヌダグアイローニ)  
が目を惹くデザインは、さらさらとした  
セックスなプロポーションが特徴だ。

The basic design of SHIRTS  
designs is quite simple, but the  
brand's own African designers  
add a kick, both by choosing the  
right material and fit. If you wish  
to have edge, denim from the  
winery, ASHLEY ROWE is the  
brand for you. They are both  
available at International Gallery  
BEAMS store.

**TWO Brands  
on the Rise**  
注目される2つのブランドのデザイナー  
インタビュー

NIJUKU  
NIJUKU is a brand of clothing and accessories  
created by the designer NIJUKU. The brand  
is known for its high quality denim and  
casual wear. NIJUKU is available at  
International Gallery BEAMS store.

ASHLEY ROWE  
ASHLEY ROWE is a brand of clothing and  
accessories created by the designer  
ASHLEY ROWE. The brand is known for  
its high quality denim and casual wear.  
ASHLEY ROWE is available at  
International Gallery BEAMS store.

(BEAMS MEN) 068



## GEORGE HARD

Height: 187cm Chest: 92cm Waist: 71cm Shoe: 10.5 UK Hair: Auburn Eyes: Green



# BOSS MODELS

CAPE TOWN



## GEORGE HARD

Height: 187cm Chest: 92cm Waist: 71cm Shoe: 10.5 UK Hair: Auburn Eyes: Green

# BOSS MODELS

CAPE TOWN



## GEORGE HARD

Height: 187cm Chest: 92cm Waist: 71cm Shoe: 10.5 UK Hair: Auburn Eyes: Green

# BOSS MODELS

CAPE TOWN



## GEORGE HARD

Height: 187cm Chest: 92cm Waist: 71cm Shoe: 10.5 UK Hair: Auburn Eyes: Green

# BOSS MODELS

CAPE TOWN

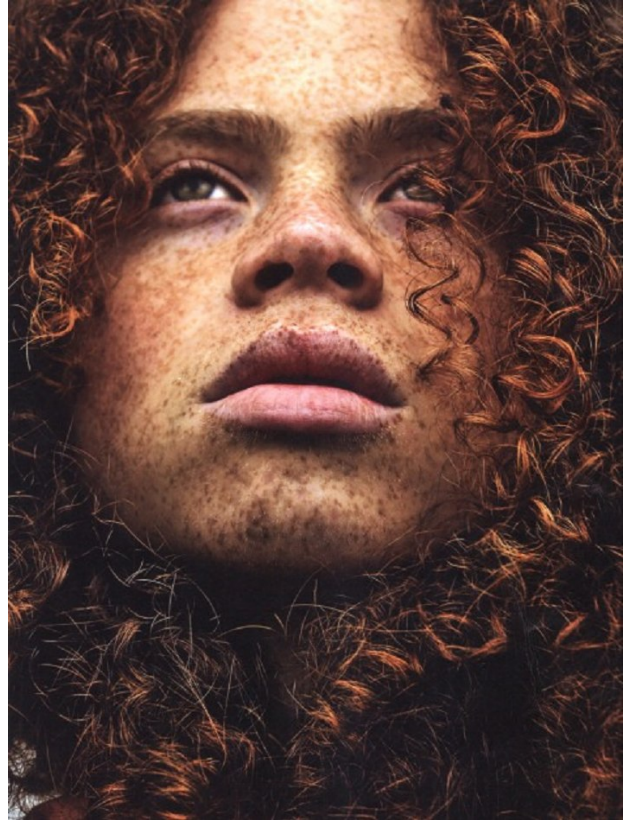


## GEORGE HARD

Height: 187cm Chest: 92cm Waist: 71cm Shoe: 10.5 UK Hair: Auburn Eyes: Green

# BOSS MODELS

CAPE TOWN



**GEORGE HARD**

Height: 187cm Chest: 92cm Waist: 71cm Shoe: 10.5 UK Hair: Auburn Eyes: Green