

# BOSS MODELS

CAPE TOWN

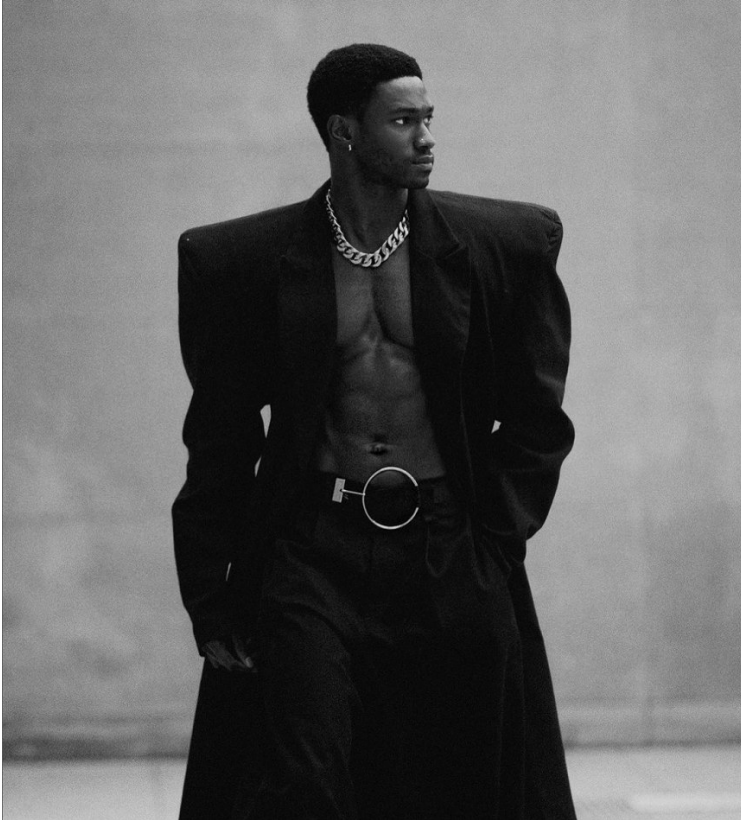


## SADIQ ADESHINA

Height: 185cm Chest: 96cm Waist: 76cm Suit: 38 L Shoe: 11 UK Hair: Black Eyes: Hazel

# BOSS MODELS

CAPE TOWN



## SADIQ ADESHINA

Height: 185cm Chest: 96cm Waist: 76cm Suit: 38 L Shoe: 11 UK Hair: Black Eyes: Hazel

# BOSS MODELS

CAPE TOWN

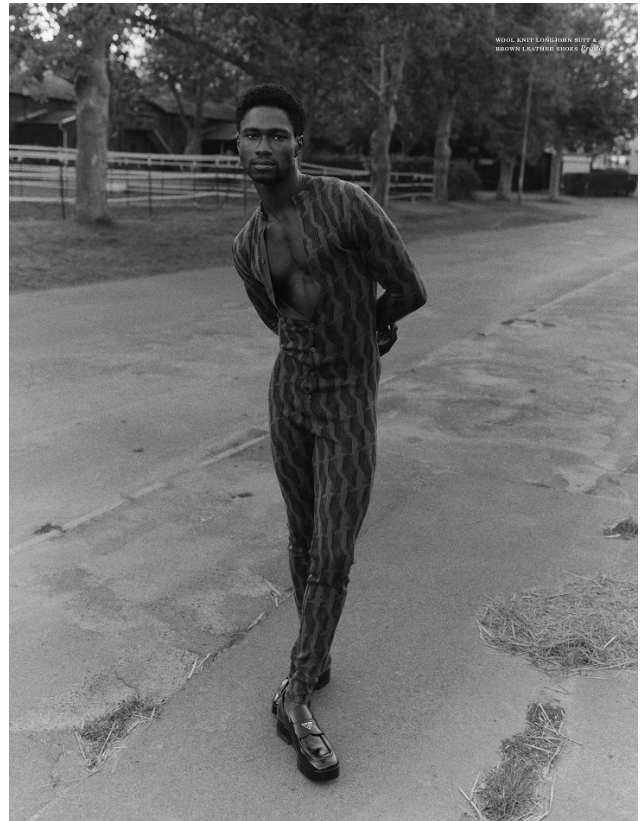


## SADIQ ADESHINA

Height: 185cm Chest: 96cm Waist: 76cm Suit: 38 L Shoe: 11 UK Hair: Black Eyes: Hazel

# BOSS MODELS

CAPE TOWN



## SADIQ ADESHINA

Height: 185cm Chest: 96cm Waist: 76cm Suit: 38 L Shoe: 11 UK Hair: Black Eyes: Hazel

# BOSS MODELS

CAPE TOWN



## SADIQ ADESHINA

Height: 185cm Chest: 96cm Waist: 76cm Suit: 38 L Shoe: 11 UK Hair: Black Eyes: Hazel

# BOSS MODELS

CAPE TOWN



## SADIQ ADESHINA

Height: 185cm Chest: 96cm Waist: 76cm Suit: 38 L Shoe: 11 UK Hair: Black Eyes: Hazel

# BOSS MODELS

CAPE TOWN



**GQ** ESTILO

TENDÊNCIAS • SHOPPING • NOVIDADES • PERSONALIDADES

U N C O N S C I O U S  
D I V I N I T Y

Se soubéssemos que temos algo de divino dentro de nós,  
como seríamos? Seríamos o que quiséssemos ser.  
Um bailarino, ou um agente secreto,  
um músico, ou um cowboy do espaço. Sem julgamentos.  
Se soubéssemos que temos algo de divino  
dentro de nós, seríamos mais felizes.

Fotografia de Ferry Mohr.  
Styling de Alexandra McFadyen.

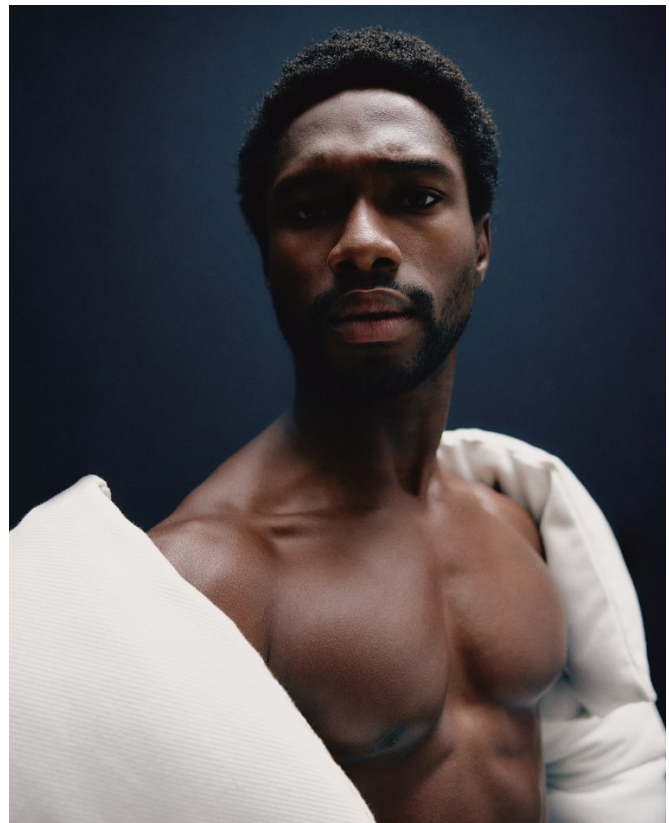


**SADIQ ADESHINA**

Height: 185cm Chest: 96cm Waist: 76cm Suit: 38 L Shoe: 11 UK Hair: Black Eyes: Hazel

# BOSS MODELS

CAPE TOWN



## SADIQ ADESHINA

Height: 185cm Chest: 96cm Waist: 76cm Suit: 38 L Shoe: 11 UK Hair: Black Eyes: Hazel



# BOSS MODELS

CAPE TOWN



SADIQ ADESHINA

Height: 185cm Chest: 96cm Waist: 76cm Suit: 38 L Shoe: 11 UK Hair: Black Eyes: Hazel

# BOSS MODELS

CAPE TOWN

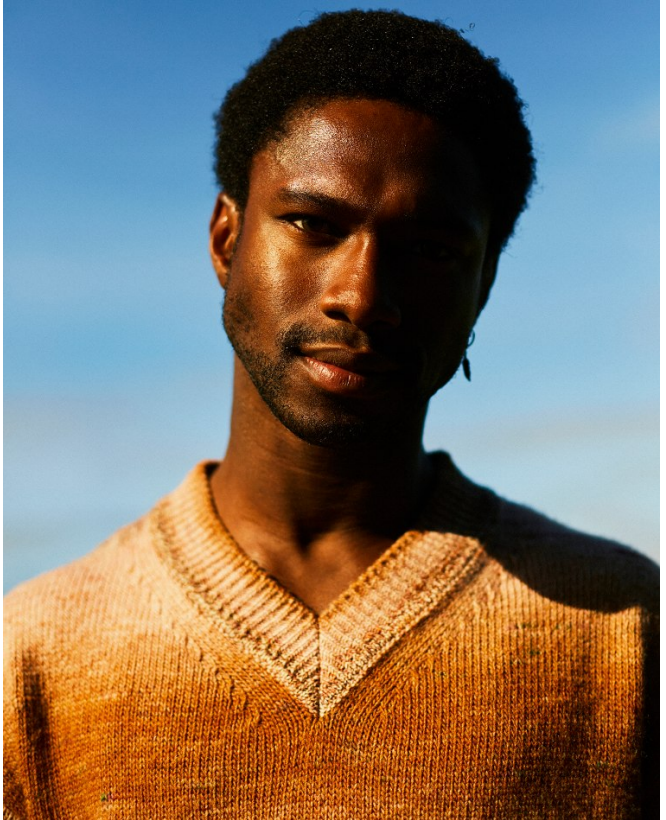


## SADIQ ADESHINA

Height: 185cm Chest: 96cm Waist: 76cm Suit: 38 L Shoe: 11 UK Hair: Black Eyes: Hazel

# BOSS MODELS

CAPE TOWN



## SADIQ ADESHINA

Height: 185cm Chest: 96cm Waist: 76cm Suit: 38 L Shoe: 11 UK Hair: Black Eyes: Hazel

# BOSS MODELS

CAPE TOWN



SADIQ ADESHINA

Height: 185cm Chest: 96cm Waist: 76cm Suit: 38 L Shoe: 11 UK Hair: Black Eyes: Hazel